

ONE-WAY DRAW DRAPERIES - CEILING MOUNTED 2 TRACK SYSTEM

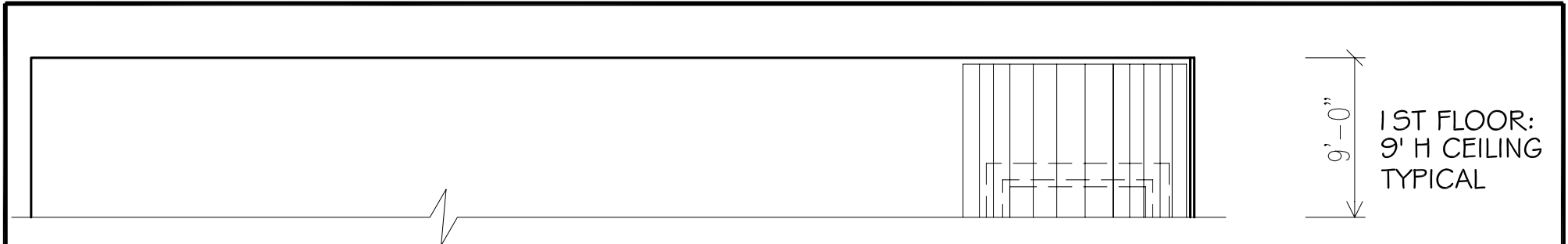
X-101	TRAVERSING SHEER - TPS PIKE (118); CUSTOM CREAM - #130553 - 225% FULLNESS & HANKY HEM. STRIPE TO RUN HORIZONTALLY.
X-102	BLACKOUT LINER - 3 PASS BLACKOUT (54); WHITE/WHITE - #6449 - 200% FULLNESS; 1/2" CLEAN FINISH HEM.



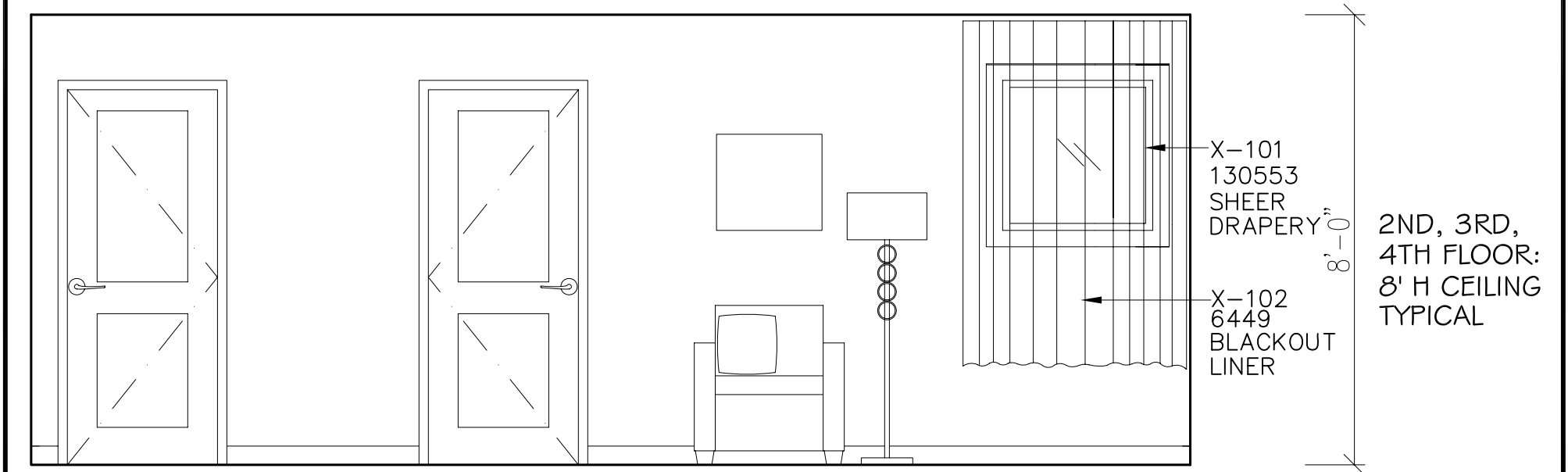
UPTOWNE GUESTROOM DRAPERY ELEVATION  
NEW BUILD - CEILING MOUNT 2 TRACK SYSTEM

SCALE: 3/8" = 1'-0"

REVISED: 8-28-09



1ST FLOOR:  
9' H CEILING  
TYPICAL



2ND, 3RD,  
4TH FLOOR:  
8' H CEILING  
TYPICAL

X-101  
130553  
SHEER  
DRAPERY

X-102  
6449  
BLACKOUT  
LINER

CENTER DRAW DRAPERIES - CEILING MOUNTED 2 TRACK SYSTEM

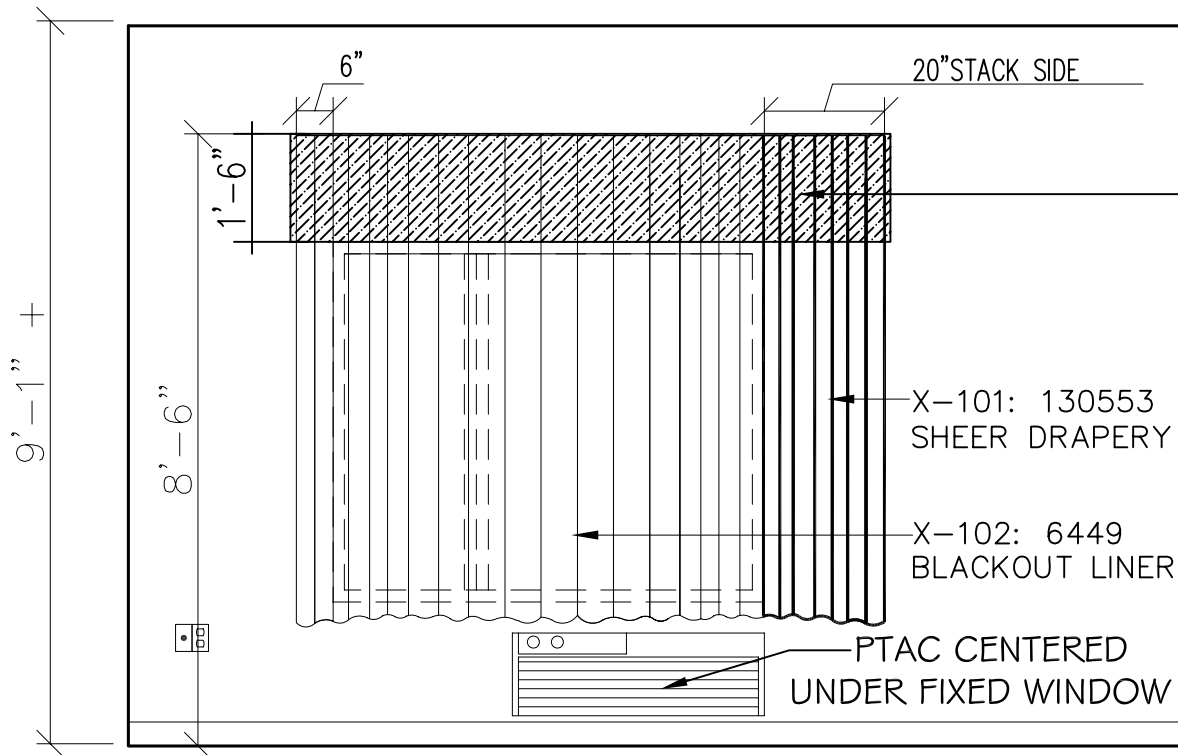
X-101	TRAVERSING SHEER - TPS PIKE (118); CUSTOM CREAM - #130553 - 225% FULLNESS & HANKY HEM. STRIPE TO RUN HORIZONTALLY.
X-102	BLACKOUT LINER - 3 PASS BLACKOUT (54); WHITE/WHITE - #6449 - 200% FULLNESS; 1/2" CLEAN FINISH HEM.



UPTOWNE GUESTROOM DRAPERY ELEVATION: TWO BEDROOM SIDE WINDOW  
NEW BUILD - CEILING MOUNT 2 TRACK SYSTEM

SCALE: 3/8" = 1'-0"

8-28-09



X-105OPT/X-105LOPT  
 LINED CORNICE with 1/2" Self Welting  
 Install Cornice with Dust Cap to  
 support 2-Track System at 8'-6" AFF.  
 Provide adequate Angle Iron Support.  
 Drapery Track installed in Cornice Dust Cap.

X-101: 130553  
 SHEER DRAPERY

X-102: 6449  
 BLACKOUT LINER

PTAC CENTERED  
 UNDER FIXED WINDOW

ONE-WAY DRAW DRAPERIES - WALL-MOUNTED CORNICE WITH 2 TRACK SYSTEM

X-101	TRAVERSING SHEER - TPS PIKE (118); CUSTOM CREAM - #130553 - 225% FULLNESS & HANKY HEM. STRIPE TO RUN HORIZONTALLY.
X-102	BLACKOUT LINER - 3 PASS BLACKOUT (54); WHITE/WHITE - #6449 - 200% FULLNESS; 1/2" CLEAN FINISH HEM.
X-105OPT	CORNICE WITH 1/2" SELF WELTING - NFP WEXFORD - HONEY - #132058
X-105LOPT	CORNICE LINING - 3 PASS BLACKOUT (54); WHITE/WHITE - #6449



UPTOWNE GUESTROOM DRAPERY ELEVATION  
 NEW BUILD - CEILING HEIGHT GREATER THAN 9'-0"

SCALE: 3/8" = 1'-0"

REVISED: 8-28-09

Revised 2/12/10



**TOWNEPLACE SUITES WINDOW TREATMENT**  
**UPTOWNE DESIGN SCHEME**  
**NEW BUILD**

**NEW BUILD GUESTROOM APPLICATION**

**Gen 3 Prototypical New Build - Ceiling Height 9'-0" or less:**

(PTAC located under fixed side of window – Ceiling Mounted Sheer & Blackout Liner)

- **2 Track System with 6" extension at operable window side and 20" extension at fixed window (stacking) side**
- **Ceiling Mount**
- **Traversing, One-Way Draw Sheer Drapery and Blackout Liner**
- **Sheer Drapery Stripes run Horizontally**

**Gen 3 Prototypical New Build - Ceiling Height greater than 9'-0":**

(PTAC located under fixed side of window – Wall Mounted Cornice with Sheer & Blackout Liner)

- **Wall mounted Cornice at 8'-6" with an appropriate Dust Cap to support 2-Track System with 6" extension at operable window side and 20" extension at fixed window (stacking) side**
- **Provide adequate Angle Iron support**
- **Drapery Track installed in Cornice Dust Cap**
- **Traversing, One-Way Draw Sheer Drapery and Blackout Liner**
- **Sheer Drapery Stripes run Horizontally**

## **NEW BUILD GUESTROOM SPECIFICATION**

### **X-101**

#### **Sheer:**

- **225% Fullness**

**Prototypical NEW BUILD windows are 6' wide and require application of one width per panel of 118" TPS Pike Sheer to achieve 225% fullness with no adjustments necessary**

- **Fabric to be cut by the width so stripes run Horizontally**
- **Stripe to start at the Pleats**
- **Hanky Hem with String Weight**

Vendor: P. Kaufmann

Pattern: TPS Pike (118)

Color: Custom Cream

Material ID#: 130553

**For all orders of Pike Sheer fabric (TownePlace Suites UpTowne Guestroom Sheer) it is recommended to keep cuts from each unique roll grouped together when cutting and fabricating panels. Although all rolls are within industry standard in terms of pattern repeat, there can be slight variations from roll to roll. Keeping cuts from each roll grouped together as they run through the fabrication process will help ensure that each set of panels for a room will come from the same roll of fabric and thereby help to minimize potential horizontal mismatch issues at the window.**

## **X-102**

### **Blackout Liner**

- **200% Fullness**
- **Ceiling Mounted**
- **1/2" Clean Finish Hem**

Vendor: Rockland Mills

Pattern: 3 Pass Blackout (54)

Color: White/White

Material ID#: 6449

## **X-105OPT**

### **Optional Guestroom Cornice:**

- **Cornice used only when Ceiling Height is Greater than 9'-0"**
- **18" high Cornice with 1/2" welting**
- **Cornice to be wall mounted**
- **Provide appropriate Dust Cap to support 2 -Track System**
- **Provide adequate Angle Iron support**

### **Cornice X-105OPT:**

Vendor: P. Kaufmann

Pattern: NFP Wexford (56)

Color: Honey – no repeat

Material ID#: 132058

### **Cornice Lining X-105LOPT:**

Vendor: Rockland Mills

Pattern: 3 Pass Blackout (54)

Color: White/White

Material ID#: 6449

## **PUBLIC AREA**

### **Solar Shades**

Vendor: Hunter Douglas Hospitality

Pattern: CHRISM - 3% Density

Color: LINEN

Painted Aluminum Fascia: VANILLA

- **Heat Sealed fabric wrapped Hem Bar**
- **Install INSIDE Mount**
- **Meets NFPA 701**
- **2-4 week lead time**

### **Solar Shades to be installed in the following locations:**

- **Lobby**
- **Reception**
- **Office**
- **Employee Break Room**
- **Stairwells – Upper Floors Only**
- **Corridors (as applicable)**
- **Activity Center**
- **Vestibule (as applicable)**

There will not be any drapery used for the public area.

To order this New FR Product, developed for Marriott, please contact the **Hospitality Division of Hunter Douglas's Chicago Office**.

This specification is NOT available through Residential Distribution Centers.

#### **Hunter Douglas Contacts:**

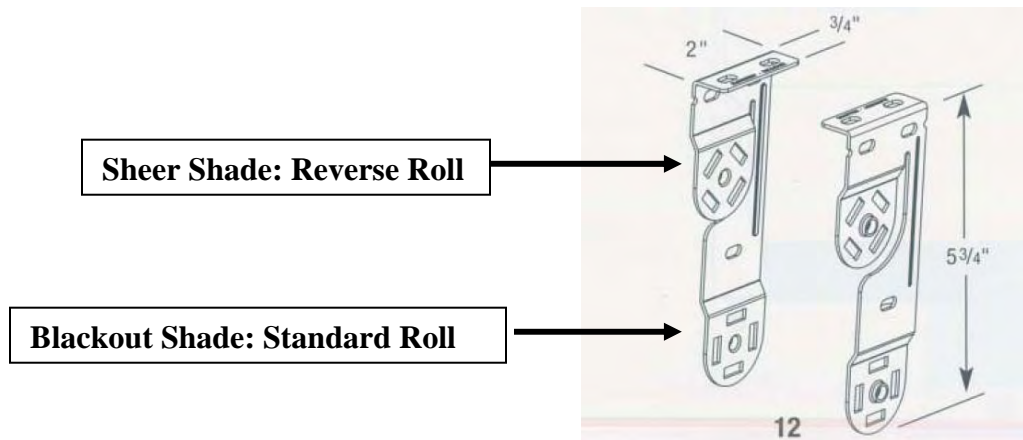
- **Sarah Warren** [Sarah.Warren@hunterdouglasshospitality.com](mailto:Sarah.Warren@hunterdouglasshospitality.com)  
1-800-229-5300 ext 124 or 773-634-5124
- **David Haseley** [David.Haseley@hunterdouglasshospitality.com](mailto:David.Haseley@hunterdouglasshospitality.com)  
1-800-229-5300 ext 105 or 773-634-5105
- **Paris Waddill** [Paris.Waddill@hunterdouglasshospitality.com](mailto:Paris.Waddill@hunterdouglasshospitality.com)  
1-800-229-5300 ext 103 or 773-634-5103

## **Optional Meeting Room Dual Solar Shade**

**Vendor: Hunter Douglas Hospitality**

**Dual Shade Mounting Bracket: Vertical Mount**

- **Inside Mount**



**Sheer Shade: Radiance - Mustard/Linen**

- **Reverse Roll**

**Blackout Shade: Buckwheat**

- **Standard Roll**

- **Fabric Wrapped Hem Bar**
- **Install INSIDE Mount**
- **Meets NFPA 701**
- **3-4 week lead time**

## **BLINDS - 1/2" Horizontal Mini Blinds**

- Hunter Douglas: Crème de la Crème #724
- Graber: Alabaster #112
- Kirsch: Crème de la Crème #268
- Levelor: Dover #115

**Mini Blinds to be installed in the following locations:**

- **Guestroom Kitchen Windows (as applicable)**
- **Exercise Room**
- **Laundry**