

close print

Brand: **Staybridge Suites**

Scheme: Chocolate

Area: Guest Rooms

Category: Window Treatments

Item: Drapery

Item Code: G-601 (C)

Vendor: Quiltcraft

Model: See Info Below

Description: Window Treatment

Pattern: See Below

Color: See Below

Style:

### Specifications:

**DESCRIPTION:** 2-way Draw and Fixed Side Panel

**FINISHED SIZE:** To be verified on-site

Window Treatment styling to be fixed side panels flanking window with fully traversing separate sheers and separate blackout drapery against window. Side panels, sheers and blackouts to be full height, except when located directly above PTAC units. Stacking to occur completely behind fixed side panels: drapery may be symmetrical or asymmetrical according to the window location and architectural conditions. No vertical blinds. No horizontal blinds.

See Window Treatment Preamble for detailed specifications.

### NOTES:

1. Products must be contract quality, suitable for commercial use.
2. Products must meet or exceed all applicable state & local codes.
3. No products shall infringe on any third party patents, copyrights, trademarks or other intellectual property rights.
4. Valance not required with guestroom window treatments.
5. Photograph for Design Intent Only.

### FABRICS:

#### FABRIC @ FIXED SIDE PANELS:

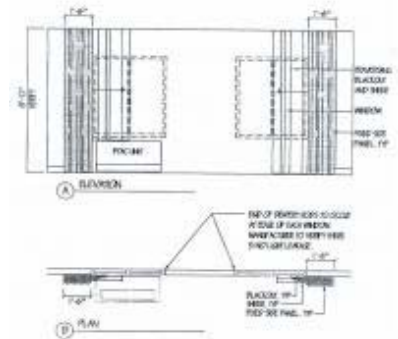
Manufacturer: [Fabricut](#)

Pattern: Bobko RT  
 Color: Custom 5011  
 Content: 100% FR Polyester  
 Base Cloth: RT (Twill)  
 Weight: 9.28 oz / linear yard  
 Width: 54"  
 Repeat:

#### SHEER FABRIC (Option #1):

Manufacturer: [Valley Forge](#)

Pattern: Turkish Taffy  
 Color: 0624-MEF  
 Content: 100% Polyester



\$ \*\*\*\*\*

\$ \*\*\*\*\*

#### Vendor Contact:

Quiltcraft  
 1230 East Ledbetter

Dallas, TX 75216-6988  
 USA

David Pearson  
 Sales Associate  
 TEL: 214-376-1841  
 FAX: 214-376-1852  
 dpearson@quiltcraft.com

Prices above do not include taxes, shipping, or installation costs unless otherwise stated. All installed fabrics, upholstery, carpet, wall covering and other finish materials must meet local fire codes and regulations: Owner and Purchasing Agent must provide all code information to manufacturer. Fabricator and/or installer must confirm exact quantities required. Manufacturers must provide maintenance instructions.

**Width:** 118"  
**Repeat:** N/A (Railroadable)

**SHEER FABRIC (Option #2 - Colored):**

**Manufacturer:** [Fabricut](#)

**Pattern:** Silkana  
**Color:** Spa  
**Content:** 100% Polyester  
**Width:** 124"  
**Repeat:** N/A

**FABRIC NOTES:**

1. Manufacturer responsible for verifying yardage requirements.
2. Fabrics must be treated for soil and stain repellency.
3. Fabrics must meet NFPA-701.

(Revised 1/18/2010)

---

Last Update: 2010-01-18, Original Issue: 2006-12-01 ID:6196