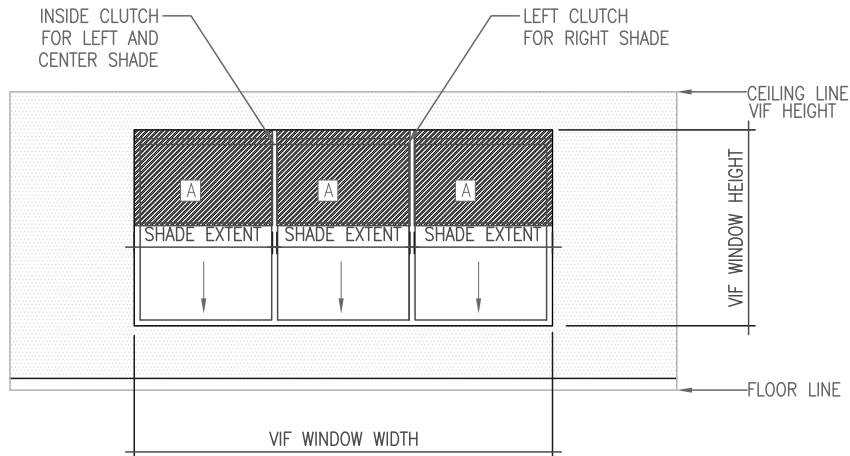


# **Window Treatment Elevations and Specifications**



*TYP. EXERCISE ROOM  
ELEVATION*

SCALE : NTS

GENERAL NOTES:

INSTALL ROLLER SHADES LEVEL, PLUMB, SQUARE AND TRUE ACCORDING TO MANUFACTURERS WRITTEN INSTRUCTIONS, AND LOCATED SO SHADE IS NO CLOSER THAN 2" TO INTERIOR FACE OF GLASS.  
 INSTALL ROLLER SHADES WALL MOUNT DIRECTLY ABOVE STOREFRONT CASEMENT WITH PROPER BLOCKING.  
 ROLLER SHADES ARE TO BE DELIVERED TO SITE IN PROTECTIVE PACKAGING AND LABELED WITH THE PROPER ROOM LOCATION. DRAPERIES PROTECTED, LABELED AND DRESSED.  
 ALL INSTALLATIONS ARE TO OCCUR AFTER ALL PAINTING AND FINISH WORK IS COMPLETED AND AMBIENT TEMPERATURE AND HUMIDITY CONDITIONS ARE MAINTAINED TO INTENDED LEVEL.  
 INSTALLER REQUIRED TO VIF (VERIFY IN FIELD) ALL REQUIRED MEASUREMENTS AND SITE CONDITIONS AND ADJUST ROLLERSHADES AND DRAPERY ACCORDINGLY.

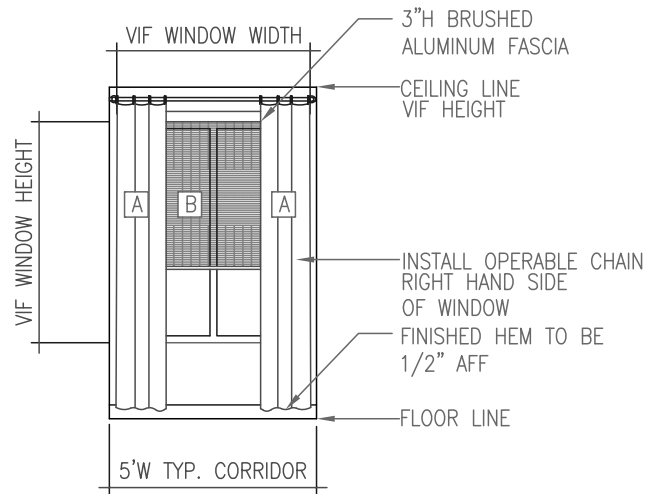
A	ROLLER SHADE CONTRACTOR SUPPLIED & INSTALLED	DESCRIPTION: MANUAL CLUTCH OPERATED FR SOLAR SHADE BY HUNTER DOUGLAS CONTRACT, PATTERN: FINE LINE 35% OPEN, COLOR: WHITE FABRICATION DESCRIPTION: WALL MOUNT (3) INDIVIDUAL ROLLER SHADES W/ (2) INSIDE CLUTCH CONTROL AND (1) LEFT HAND CLUTCH CONTROL 3"H MIN. ANODIZED BRUSHED ALUMINUM FASCIA (1) PER SHADE & BOTTOM BAR
---	--	--

SHS A.I.R. EXERCISE ROOM WINDOW TREATMENT ELEVATION - GEN I RENOVATION  
 WALL MOUNTED ROLLER SHADES

SK-ER

SCALE: NTS (NOT TO SCALE)

DATE ISSUED: 10/13/09



## TYP. END OF GUEST CORRIDOR ELEVATION

SCALE : NTS

**GENERAL NOTES:**

INSTALL ROLLER SHADES LEVEL, PLUMB, SQUARE AND TRUE ACCORDING TO MANUFACTURERS WRITTEN INSTRUCTIONS, AND LOCATED SO SHADE IS NO CLOSER THAN 2" TO INTERIOR FACE OF GLASS.  
 INSTALL ROLLER SHADES INSIDE MOUNT WITH PROPER BLOCKING. IF SITE CONDITIONS DO NOT ALLOW, OUTSIDE MOUNT TO WALL DIRECTLY ABOVE WINDOW CASEMENT.  
 ROLLER SHADES ARE TO BE DELIVERED TO SITE IN PROTECTIVE PACKAGING AND LABELED WITH THE PROPER ROOM LOCATION. DRAPERIES PROTECTED, LABELED AND DRESSED.  
 ALL INSTALLATIONS ARE TO OCCUR AFTER ALL PAINTING AND FINISH WORK IS COMPLETED AND AMBIENT TEMPERATURE AND HUMIDITY CONDITIONS ARE MAINTAINED TO INTENDED LEVEL.  
 INSTALLER REQUIRED TO VIF (VERIFY IN FIELD) ALL REQUIRED MEASUREMENTS AND SITE CONDITIONS AND ADJUST ROLLERSHADES AND DRAPERY ACCORDINGLY.

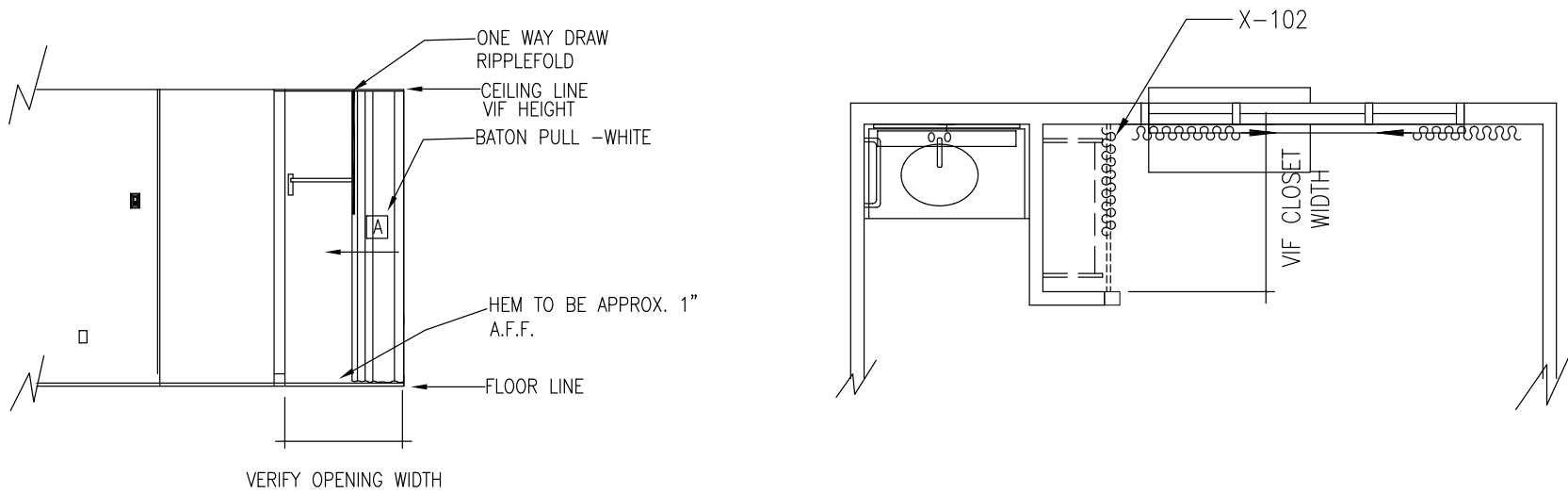
A	SIDE PANELS - PG-102 ITEM ID#136986 LINING - PG-102L ITEM ID#3013 FABRIC BY PROCUREMENT FABRICATION & INSTALLATION BY OTHER	FABRIC DESCRIPTION: SIDE PANEL FABRIC BY VALLEY FORGE, PATTERN: SILK SUEDE, COLOR: SAND-DM, 54"W, NO REPEAT. LINING DESCRIPTION: SIDE PANEL LINING BY ROCKLAND MILLS, PATTERN: SHEETING, COLOR: WHITE, 54"W FABRICATION DESCRIPTION: FULLY LINED STATIONARY SIDE PANELS W/ INVERTED BOX PLEAT (TACKED DOWN W/ MATCHING THREAD), 4" HEM & 120% FULLNESS.
B	ROLLER SHADE FABRICATOR SUPPLIED & INSTALLED	DESCRIPTION: MANUAL CLUTCH OPERATED FR SOLAR SHADE BY HUNTER DOUGLAS CONTRACT, PATTERN: FINE LINE 35% OPEN, COLOR: WHITE FABRICATION DESCRIPTION: INSIDE MOUNT (IF SITE CONDITIONS ALLOW) W/ RIGHT HAND CLUTCH CONTROL, 3"H MIN. ANODIZED BRUSHED ALUMINUM FASCIA & BOTTOM BAR

SHS A.I.R. GUEST CORRIDOR DRAPERY ELEVATION & PLAN - GEN I RENOVATION  
 WALL MOUNTED STATIONARY SIDE PANESL W/ DECORATIVE HARDWARE & ROLLER SHADE

SK-GC

SCALE: NTS (NOT TO SCALE)

DATE ISSUED:10/13/09



***TYP. KING LEFT -CLOSET  
ROOM ELEVATION AND PLAN***

SCALE : NOT TO SCALE

**GENERAL NOTES:**  
 ALL INSTALLATIONS ARE TO OCCUR AFTER ALL PAINTING AND FINISH WORK IS COMPLETED AND AMBIENT TEMPERATURE AND HUMIDITY CONDITIONS ARE MAINTAINED TO INTENDED LEVEL.  
 INSTALLER REQUIRED TO VIF (VERIFY IN FIELD) ALL REQUIRED MEASUREMENTS AND SITE CONDITIONS AND ADJUST ROLLERSHADES AND DRAPERY ACCORDINGLY.

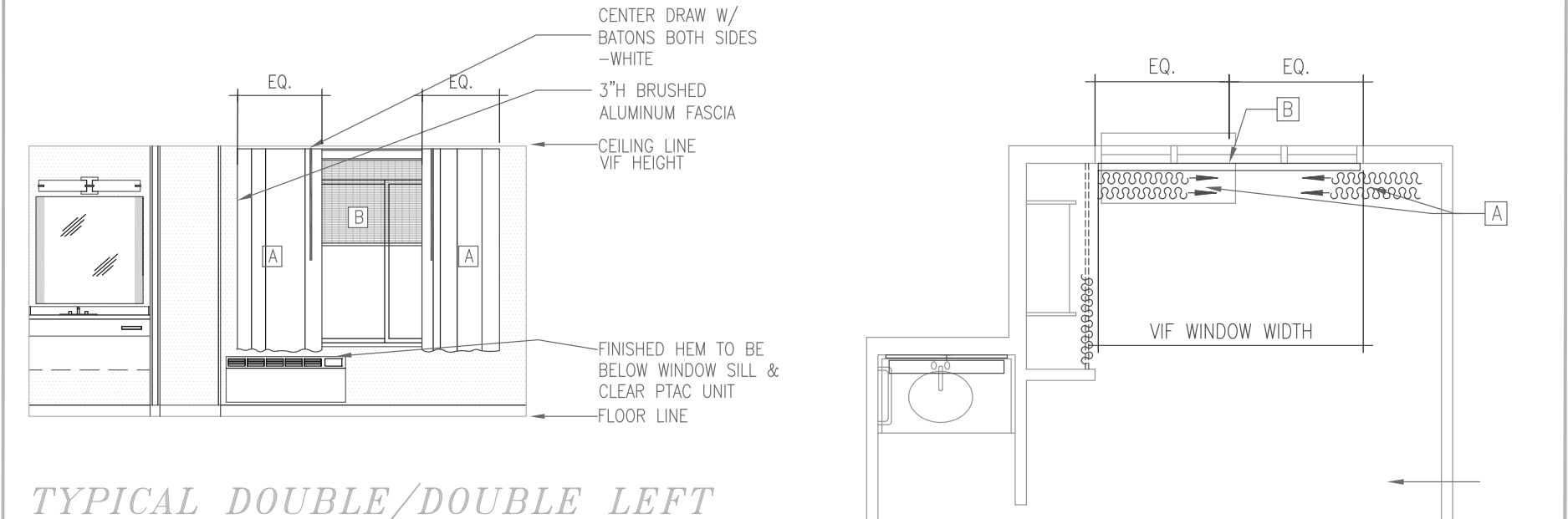
A	BLACK-OUT DRAPERY ITEM ID #133064 X-102 FABRIC BY PROCUREMENT FABRICATION & INSTALLATION BY OTHER	FABRIC DESCRIPTION: BLACKOUT DRAPERY FABRIC BY VALLEY FORGE, PATTERN: SLEEPY SUEDE, COLOR: MIST 111-DM, 54"W, NO REPEAT. FABRICATION DESCRIPTION: ONE WAY DRAW TRAVERSING RIPPLEFOLD PANEL. CEILING MOUNTED WITH NEW HARDWARE. PLEASE NOTE: WINDOW DRAPERY MUST CLEAR CLOSET DRAPERY PANEL.
---	--	---

**SHS A.I.R. GUESTROOM DRAPERY ELEVATIONS- GEN 1 RENOVATION**  
 ONE WAY DRAW RIPPLEFOLD BLACKOUT COATED DRAPERY FOR CLOSET

**SK-KC**

SCALE: NTS (NOT TO SCALE)

DATE ISSUED:10.15.2008



*TYPICAL DOUBLE/DOUBLE LEFT ROOM ELEVATION AND PLAN*

SCALE: NOT TO SCALE

**GENERAL NOTES:**  
 INSTALL ROLLER SHADES LEVEL, PLUMB, SQUARE AND TRUE ACCORDING TO MANUFACTURERS WRITTEN INSTRUCTIONS, AND LOCATED SO SHADE IS NO CLOSER THAN 2" TO INTERIOR FACE OF GLASS.  
 INSTALL ROLLER SHADES INSIDE MOUNT WITH PROPER BLOCKING. IF SITE CONDITIONS DO NOT ALLOW, OUTSIDE MOUNT TO WALL DIRECTLY ABOVE WINDOW CASEMENT.  
 ROLLER SHADES ARE TO BE DELIVERED TO SITE IN PROTECTIVE PACKAGING AND LABELED WITH THE PROPER ROOM LOCATION. DRAPERIES PROTECTED, LABELED AND DRESSED.  
 ALL INSTALLATIONS ARE TO OCCUR AFTER ALL PAINTING AND FINISH WORK IS COMPLETED AND AMBIENT TEMPERATURE AND HUMIDITY CONDITIONS ARE MAINTAINED TO INTENDED LEVEL.  
 INSTALLER REQUIRED TO VIF (VERIFY IN FIELD) ALL REQUIRED MEASUREMENTS AND SITE CONDITIONS AND ADJUST ROLLERSHADES AND DRAPERY ACCORDINGLY.

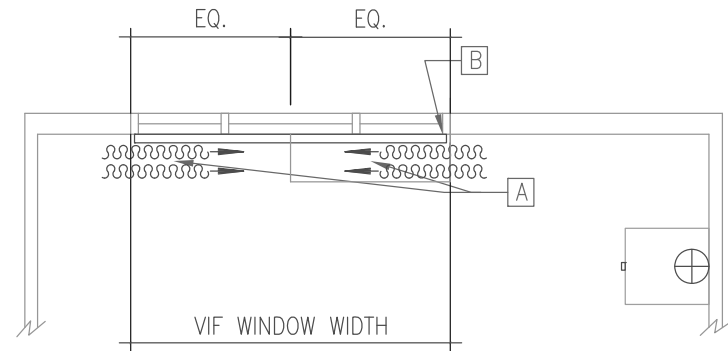
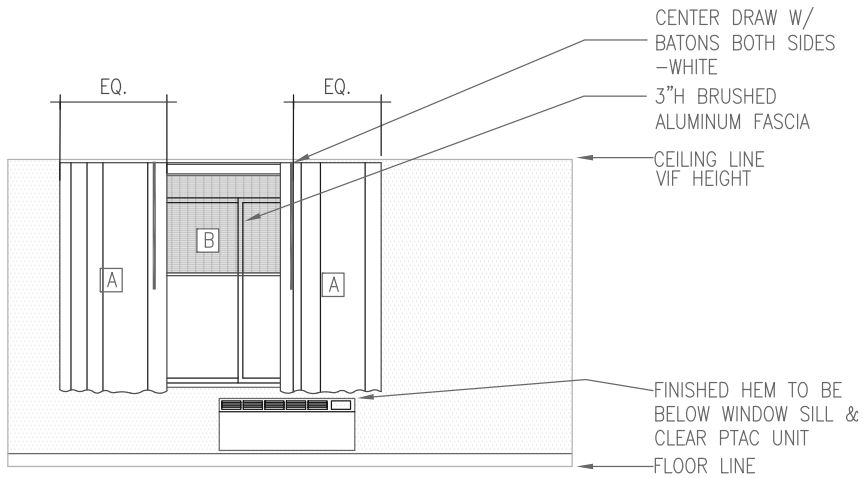
<b>A</b> BLACKOUT DRAPERY ITEM ID #133064 X-101 SHEER FABRIC ITEM ID #140570 X-102 FABRIC BY PROCUREMENT FABRICATION & INSTALLATION BY OTHER	FABRIC DESCRIPTION: BLACKOUT DRAPERY FABRIC BY VALLEY FORGE, PATTERN: SLEEPY SUEDE, COLOR: MIST 111-DM, 54"W, NO REPEAT. FABRIC DESCRIPTION: SHEER FABRIC BY NORTHEAST TEXTILES, PATTERN: F-77000 CBE1, COLOR: SERENITY VIOLE BEIGE, 118"W, NO REPEAT. FABRICATION DESCRIPTION: CENTER DRAW TRAVERSING RIPPLEFOLD PANELS W/ WAND CONTROL. CEILING MOUNTED WITH EXISTING HARDWARE. PLEASE NOTE: WINDOW DRAPERY MUST CLEAR CLOSET DRAPERY PANEL.
<b>B</b> OPTIONAL ROLLER SHADE FABRICATOR SUPPLIED & INSTALLED	DESCRIPTION: MANUAL CLUTCH OPERATED FR SOLAR SHADE BY HUNTER DOUGLAS CONTRACT, PATTERN: FINE LINE 35% OPEN, COLOR: WHITE FABRICATION DESCRIPTION: INSIDE MOUNT (IF SITE CONDITIONS ALLOW) W/ RIGHT HAND CLUTCH CONTROL, 3" MIN. ANODIZED BRUSHED ALUMINUM FASCIA & BOTTOM BAR

SHS A.I.R. GUESTROOM DRAPERY ELEVATIONS- GEN 1 RENOVATION  
 CEILING MOUNT CENTER TRAVERSE RIPPLEFOLD BLACKOUT COATED DRAPERY W/ ROLLER SHADE

SK-DDL

SCALE: NTS (NOT TO SCALE)

DATE ISSUED:12/09/10



## KING ACCESSIBLE LEFT ROOM ELEVATION AND PLAN

SCALE: NOT TO SCALE

### GENERAL NOTES:

INSTALL ROLLER SHADES LEVEL, PLUMB, SQUARE AND TRUE ACCORDING TO MANUFACTURERS WRITTEN INSTRUCTIONS, AND LOCATED SO SHADE IS NO CLOSER THAN 2" TO INTERIOR FACE OF GLASS. INSTALL ROLLER SHADES INSIDE MOUNT WITH PROPER BLOCKING. IF SITE CONDITIONS DO NOT ALLOW, OUTSIDE MOUNT TO WALL DIRECTLY ABOVE WINDOW CASEMENT. ROLLER SHADES ARE TO BE DELIVERED TO SITE IN PROTECTIVE PACKAGING AND LABELED WITH THE PROPER ROOM LOCATION. DRAPERIES PROTECTED, LABELED AND DRESSED. ALL INSTALLATIONS ARE TO OCCUR AFTER ALL PAINTING AND FINISH WORK IS COMPLETED AND AMBIENT TEMPERATURE AND HUMIDITY CONDITIONS ARE MAINTAINED TO INTENDED LEVEL. INSTALLER REQUIRED TO VIF (VERIFY IN FIELD) ALL REQUIRED MEASUREMENTS AND SITE CONDITIONS AND ADJUST ROLLERSHADES AND DRAPERY ACCORDINGLY.

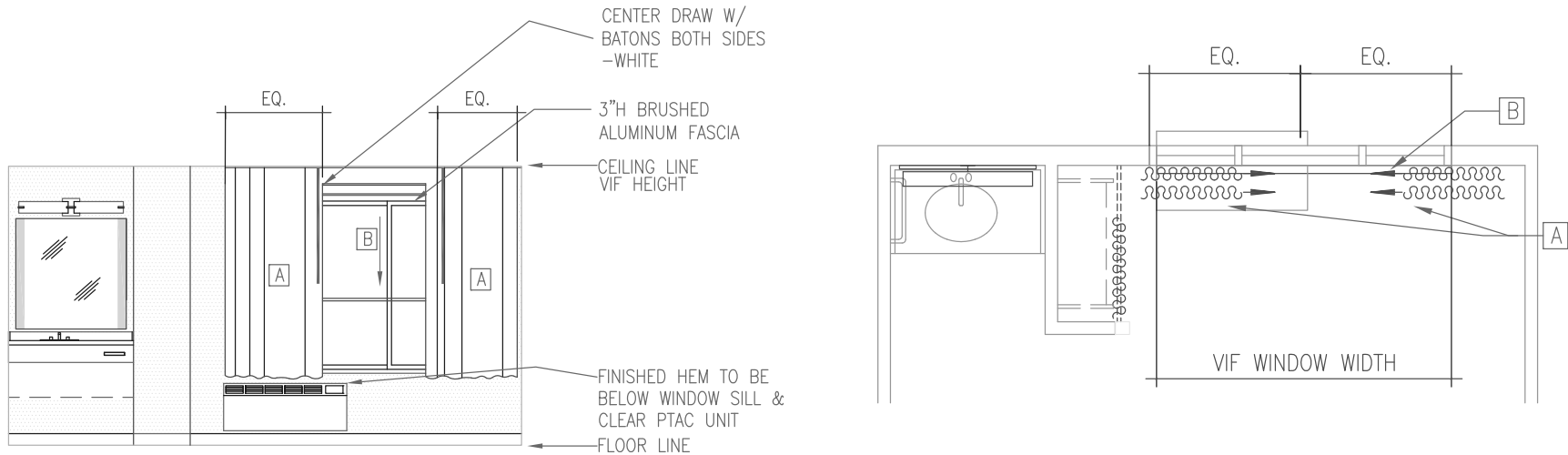
<p>A</p> <p>BLACK-OUT DRAPERY ITEM ID #133064 X-101 SHEER FABRIC ITEM ID #140570 X-102 FABRIC BY PROCUREMENT FABRICATION &amp; INSTALLATION BY OTHER</p>	<p>FABRIC DESCRIPTION: BLACKOUT DRAPERY FABRIC BY VALLEY FORGE, PATTERN: SLEEPY SUEDE, COLOR: MIST 111-DM, 54"W, NO REPEAT.</p> <p>FABRIC DESCRIPTION: SHEER FABRIC BY NORTHEAST TEXTILES, PATTERN: F-77000 CBE1, COLOR: SERENITY VIOLE BEIGE, 118"W, NO REPEAT.</p> <p>FABRICATION DESCRIPTION: CENTER DRAW TRAVERSING RIPPLEFOLD PANELS W/ WAND CONTROL. CEILING MOUNTED WITH EXISTING HARDWARE.</p> <p>PLEASE NOTE: WINDOW DRAPERY MUST CLEAR CLOSET DRAPERY PANEL.</p>
<p>B</p> <p>OPTIONAL ROLLER SHADE CONTRACTOR SUPPLIED &amp; INSTALLED</p>	<p>DESCRIPTION: MANUAL CLUTCH OPERATED FR SOLAR SHADE BY HUNTER DOUGLAS CONTRACT, PATTERN: FINE LINE 35% OPEN, COLOR: WHITE</p> <p>FABRICATION DESCRIPTION: INSIDE MOUNT (IF SITE CONDITIONS ALLOW) W/ RIGHT HAND CLUTCH CONTROL, 3"H MIN. ANODIZED BRUSHED ALUMINUM FASCIA &amp; BOTTOM BAR</p>

SHS A.I.R. GUESTROOM DRAPERY ELEVATIONS- GEN 1 RENOVATION  
CEILING MOUNT CENTER TRAVERSE RIPPLEFOLD BLACKOUT COATED DRAPERY W/ ROLLER SHADE

SK-KA

SCALE: NTS (NOT TO SCALE)

DATE ISSUED:12/09/10



*TYP. KING LEFT  
ROOM ELEVATION AND PLAN*

SCALE : NOT TO SCALE

**GENERAL NOTES:**

INSTALL ROLLER SHADES LEVEL, PLUMB, SQUARE AND TRUE ACCORDING TO MANUFACTURERS WRITTEN INSTRUCTIONS, AND LOCATED SO SHADE IS NO CLOSER THAN 2" TO INTERIOR FACE OF GLASS.  
 INSTALL ROLLER SHADES INSIDE MOUNT WITH PROPER BLOCKING. IF SITE CONDITIONS DO NOT ALLOW, OUTSIDE MOUNT TO WALL DIRECTLY ABOVE WINDOW CASEMENT.  
 ROLLER SHADES ARE TO BE DELIVERED TO SITE IN PROTECTIVE PACKAGING AND LABELED WITH THE PROPER ROOM LOCATION. DRAPERIES PROTECTED, LABELED AND DRESSED.  
 ALL INSTALLATIONS ARE TO OCCUR AFTER ALL PAINTING AND FINISH WORK IS COMPLETED AND AMBIENT TEMPERATURE AND HUMIDITY CONDITIONS ARE MAINTAINED TO INTENDED LEVEL.  
 INSTALLER REQUIRED TO VIF (VERIFY IN FIELD) ALL REQUIRED MEASUREMENTS AND SITE CONDITIONS AND ADJUST ROLLERSHADES AND DRAPERY ACCORDINGLY.

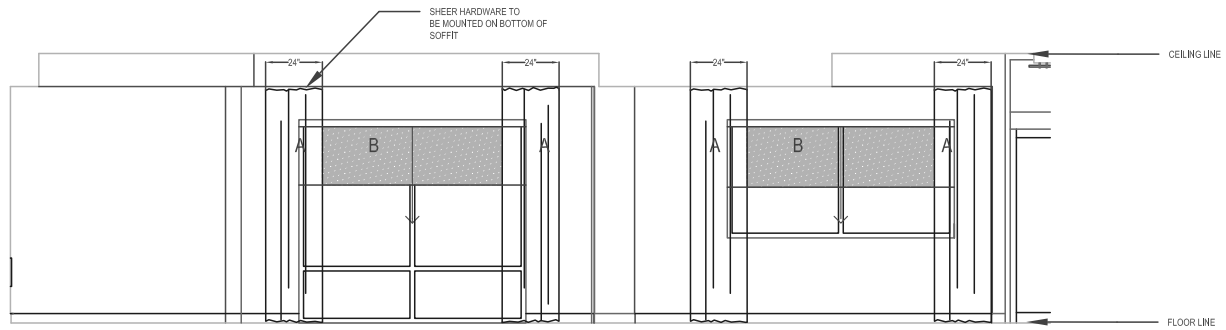
<p><b>A</b></p> <p>BLACK-OUT DRAPERY ITEM ID #133064 X-101 SHEER FABRIC ITEM ID #140570 X-102 FABRIC BY PROCUREMENT FABRICATION &amp; INSTALLATION BY OTHER</p>	<p>FABRIC DESCRIPTION: BLACKOUT DRAPERY FABRIC BY VALLEY FORGE, PATTERN: SLEEPY SUEDE, COLOR: MIST 111-DM, 54"W, NO REPEAT.</p> <p>FABRIC DESCRIPTION: SHEER FABRIC BY NORTHEAST TEXTILES, PATTERN: F-77000 CBE1, COLOR: SERENITY VIOLE BEIGE, 118"W, NO REPEAT.</p> <p>FABRICATION DESCRIPTION: CENTER DRAW TRAVERSING RIPPLEFOLD PANELS W/ WAND CONTROL. CEILING MOUNTED WITH EXISTING HARDWARE.</p> <p>PLEASE NOTE: WINDOW DRAPERY MUST CLEAR CLOSET DRAPERY PANEL.</p>
<p><b>B</b></p> <p>OPTIONAL ROLLER SHADE FABRICATOR SUPPLIED &amp; INSTALLED</p>	<p>DESCRIPTION: MANUAL CLUTCH OPERATED FR SOLAR SHADE BY HUNTER DOUGLAS CONTRACT, PATTERN: FINE LINE 35% OPEN, COLOR: WHITE</p> <p>FABRICATION DESCRIPTION: INSIDE MOUNT (IF SITE CONDITIONS ALLOW) W/ RIGHT HAND CLUTCH CONTROL, 3"H MIN. ANODIZED BRUSHED ALUMINUM FASCIA &amp; BOTTOM BAR</p>

SHS A.I.R. GUESTROOM DRAPERY ELEVATIONS- GEN 1 RENOVATION  
 CEILING MOUNT CENTER TRAVERSE RIPPLEFOLD BLACKOUT COATED DRAPERY W/ ROLLER SHADE

SK-KL

SCALE: NTS (NOT TO SCALE)

DATE ISSUED: 12/09/10



A	<p>RIPPLE-FOLD DRAPERY SHEERS STATIONARY PANELS ITEM ID# 209719 GR-103 FABRIC BY PROCUREMENT FABRICATION &amp; INSTALLATION BY OTHERS</p>	<p>FABRIC DESCRIPTION: SHEER DRAPERY FABRIC BY P/ KAUFMAN, PATTERN: METALLIC MESH, COLOR: COPPER, 118"W, NO REPEAT.</p> <p>RIPPLEFOLD- STATIONARY PANELS-120% FULLNESS. 1/2" CLEAN FINISH HEM W/ "Z" FOLD LEADING EDGE &amp; CONNECTING PANELS W/ FRENCH SEAM.</p> <p>NOTE: FABRICATOR TO FIELD VERIFY ALL DIMENSIONS PRIOR TO FABRICATION.</p>
B	<p>ROLLERSHADE FABRICATOR SUPPLIED &amp; INSTALLED</p>	<p>DESCRIPTION: MANUAL CLUTCH OPERATED FR SOLAR SHADE BY HUNTER DOUGLAS CONTRACT. PATTERN: SOLA, COLOR: STEEL.</p> <p>FABRICATION DESCRIPTION: INSIDE MOUNT (IF SITE CONDITIONS ALLOW) W/ RIGHT HAND CLUTCH CONTROL, 3"H MIN. ANODIZED ALUMINUM FASCIA &amp; FABRIC WRAPPED HEMBAR</p>

**SHS A.I.R. FRONT LOBBY WINDOWS -RENOVATION**  
STATIONARY RIPPLE-FOLD SHEER PANELS W/ ROLLERSHADE WINDOW TREATMENT

SCALE: NTS (NOT TO SCALE)

DATE REVISED: 7/20/09