

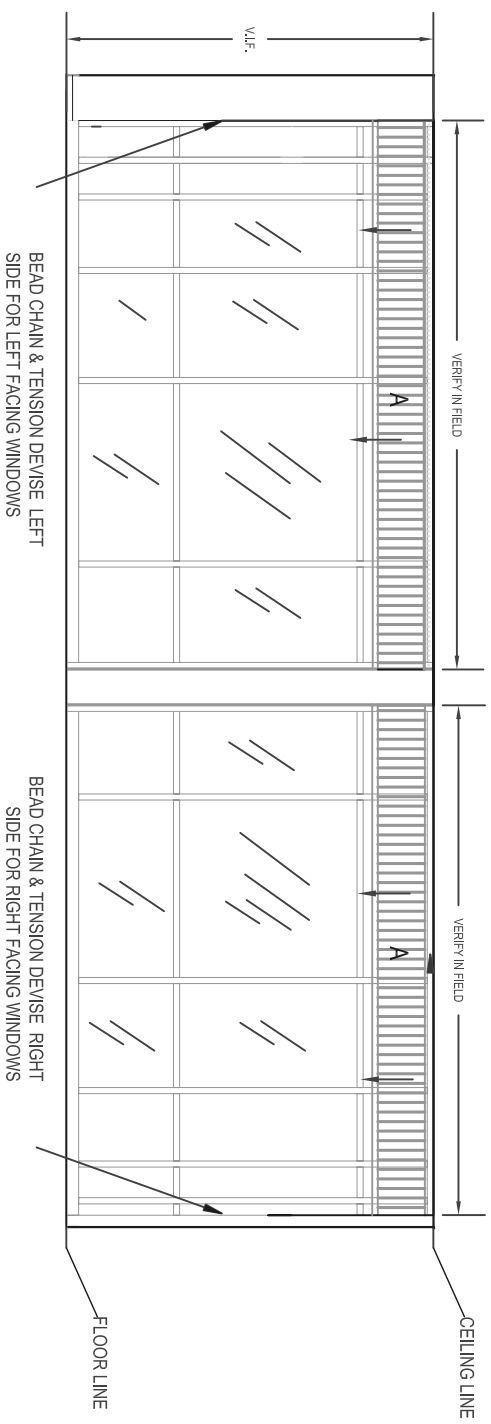
GENERAL NOTES:
 INSTALL ROLLER SHADES LEVEL, PLUMB, SQUARE AND TRUE ACCORDING TO MANUFACTURERS WRITTEN INSTRUCTIONS, AND LOCATED SO SHADE IS NO CLOSER THAN 2" TO INTERIOR FACE OF GLASS.
 INSTALL ROLLER SHADES INSIDE MOUNT WITH PROPER BLOCKING. IF SITE CONDITIONS DO NOT ALLOW, OUTSIDE MOUNT TO WALL DIRECTLY ABOVE WINDOW/CASEMENT.
 ROLLER SHADES ARE TO BE DELIVERED TO SITE IN PROTECTIVE PACKAGING AND LABELED WITH THE PROPER ROOM LOCATION, DRAPERIES PROTECTED, LABELED AND DRESSED.
 ALL INSTALLATIONS ARE TO OCCUR AFTER ALL PAINTING AND FINISH WORK IS COMPLETED AND AMBIENT TEMPERATURE AND HUMIDITY CONDITIONS ARE MAINTAINED TO INTENDED LEVEL.
 INSTALLER REQUIRED TO VIF (VERIFY IN FIELD) ALL REQUIRED MEASUREMENTS AND SITE CONDITIONS, AND ADJUST ROLLERSHADES AND DRAPERY ACCORDINGLY.

<p>A</p> <p>SIDE PANELS - PG-102 ITEM ID#136986 LINING - PG-102L ITEM ID#3013 FABRIC BY PROCUREMENT FABRICATION & INSTALLATION BY OTHER</p>	<p>FABRIC DESCRIPTION: SIDE PANEL FABRIC BY VALLEY FORGE, PATTERN: SILK SUEDE, COLOR: SAND-DM, 54"W, NO REPEAT. LINING DESCRIPTION: SIDE PANEL LINING BY ROCKLAND MILLS, PATTERN: SHEETING, COLOR: WHITE, 54"W FABRICATION DESCRIPTION: FULLY LINED STATIONARY SIDE PANELS W/ INVERTED BOX PLEAT (TACKED DOWN W/ MATCHING THREAD), 4" HEM & 120% FULLNESS. HARDWARE: MFR - FORREST GROUP-BUSCHÉ FINISH - ALUMINUM ANODIZED T-SECTION RAIL: 1" X 1" X 1/8" ALUMINUM (B919-08) WALL SUSPENSION BRACKET: ALUMINUM (B11240-80-08) GLIDER: ALUMINUM ROUND W/ EYELET AND SECONDARY RING CLIP FOR T-RAIL (B11245-08) DRAPERY DIVIDER: ALUMINUM ROUND W/ EYELET AND SECONDARY RING CLIP FOR T-RAIL (B11247-08)</p>
<p>B</p> <p>ROLLER SHADE SUPPLIED & FABRICATOR INSTALLED</p>	<p>DESCRIPTION: MANUAL CLUTCH OPERATED FR SOLAR SHADE BY HUNTER DOUGLAS CONTRACT, PATTERN: FINE LINE 35% OPEN, COLOR: WHITE FABRICATION DESCRIPTION: INSIDE MOUNT (IF SITE CONDITIONS ALLOW) W/ RIGHT HAND CLUTCH CONTROL, 3"H MIN. ANODIZED BRUSHED ALUMINUM FASCIA, FABRIC WRAPPED HEMBAR.</p>

SHS A.I.R. CORRIDOR ELEVATION & ELEVATOR LOBBY -GEN IV PROTOTYPE NEW BUILD
 WALL MOUNTED STATIONARY SIDE PANELS W/ DECORATIVE HARDWARE & INSIDE MOUNT ROLLER SHADE

SCALE: NTS (NOT TO SCALE)

DATE REVISED: 10/13/09



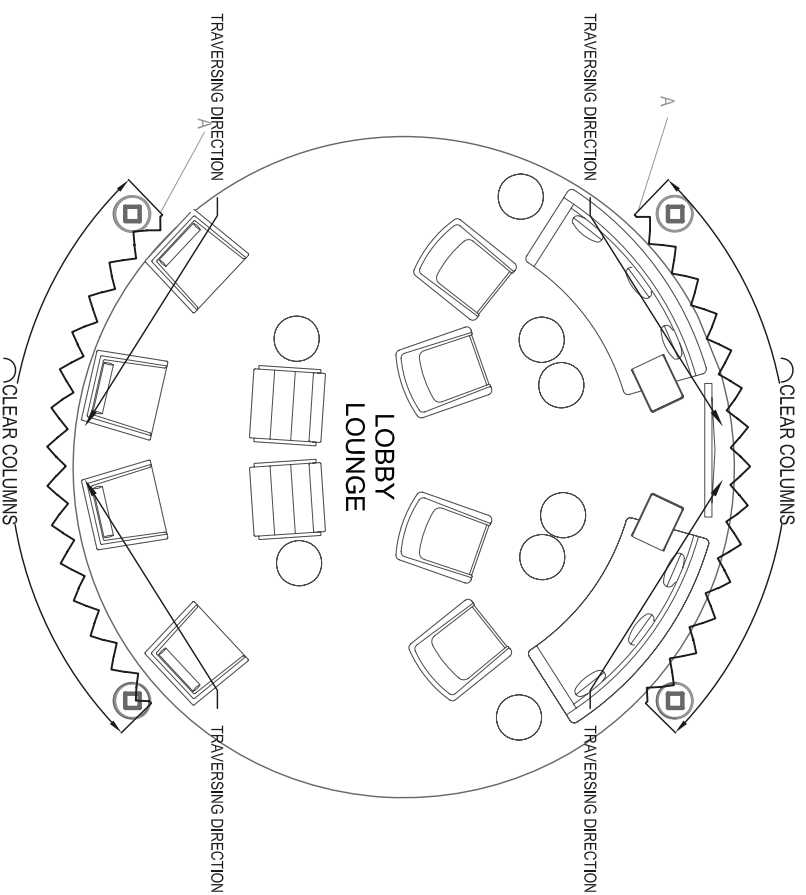
GENERAL NOTES:
 INSTALL ROLLER SHADES LEVEL, PLUMB, SQUARE AND TRUE ACCORDING TO MANUFACTURERS WRITTEN INSTRUCTIONS, AND LOCATED SO SHADE IS NO CLOSER THAN 2" TO INTERIOR FACE OF GLASS.
 INSTALL ROLLER SHADES WALL MOUNT DIRECTLY ABOVE STOREFRONT CASEMENT WITH PROPER BLOCKING
 ROLLER SHADES ARE TO BE DELIVERED TO SITE IN PROTECTIVE PACKAGING AND LABELED WITH THE PROPER ROOM LOCATION, DRAPERIES PROTECTED, LABELED AND DRESSED.
 ALL INSTALLATIONS ARE TO OCCUR AFTER ALL PAINTING AND FINISH WORK IS COMPLETED AND AMBIENT TEMPERATURE AND HUMIDITY CONDITIONS ARE MAINTAINED TO INTENDED LEVEL.
 INSTALLER REQUIRED TO V.I.F (VERIFY IN FIELD) ALL REQUIRED MEASUREMENTS AND SITE CONDITIONS AND ADJUST ROLLERSHADES AND DRAPERY ACCORDINGLY.

<p>A ROLLER SHADE FABRICATOR SUPPLIED & INSTALLED</p>	<p>DESCRIPTION: INSIDE MOUNT IF SITE CONDITIONS ALLOW. MANUAL CLUTCH OPERATED FR SOLAR SHADE BY HUNTER DOUGLAS CONTRACT, PATTERN: FINE LINE 35% OPEN, COLOR: WHITE FABRICATION DESCRIPTION: INSIDE MOUNT (3) INDIVIDUAL ROLLER SHADES W/ (2) INSIDE CLUTCH CONTROL AND (1) LEFT HAND CLUTCH CONTROL 3"^H MIN. ANODIZED BRUSHED ALUMINUM FASCIA (1) PER SHADE. FABRIC WRAPPED HEMBAR.</p>
--	--

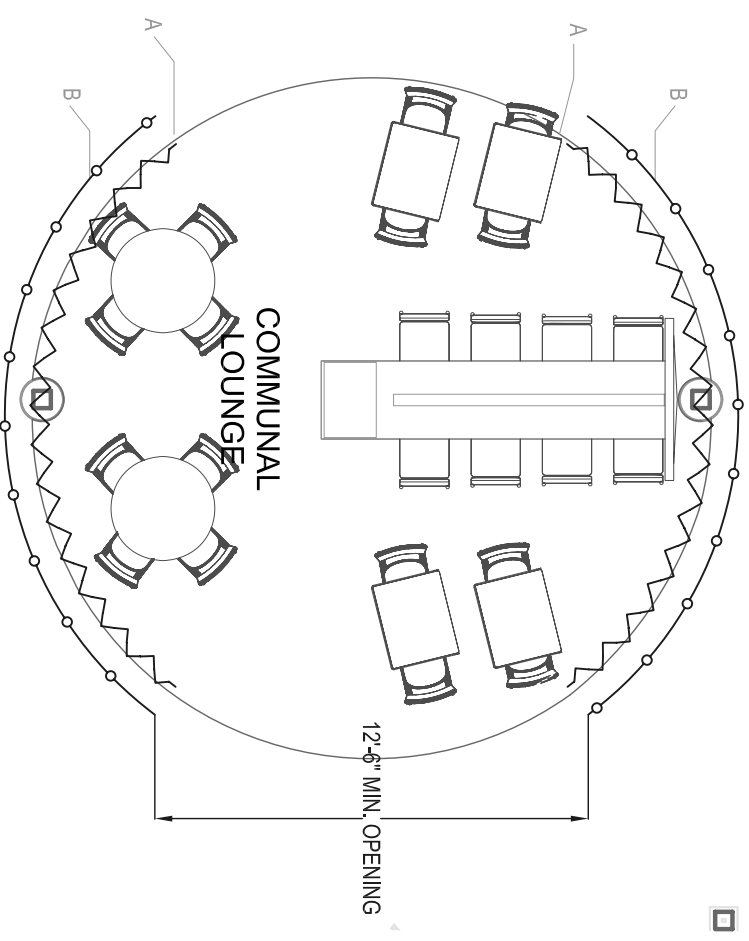
SHS A.I.R. EXERCISE ROOM - GEN IV PROTOTYPE NEW BUILD
 INSIDE MOUNT ROLLER SHADE

SCALE: NTS (NOT TO SCALE)

DATE REVISED: 10/13/09



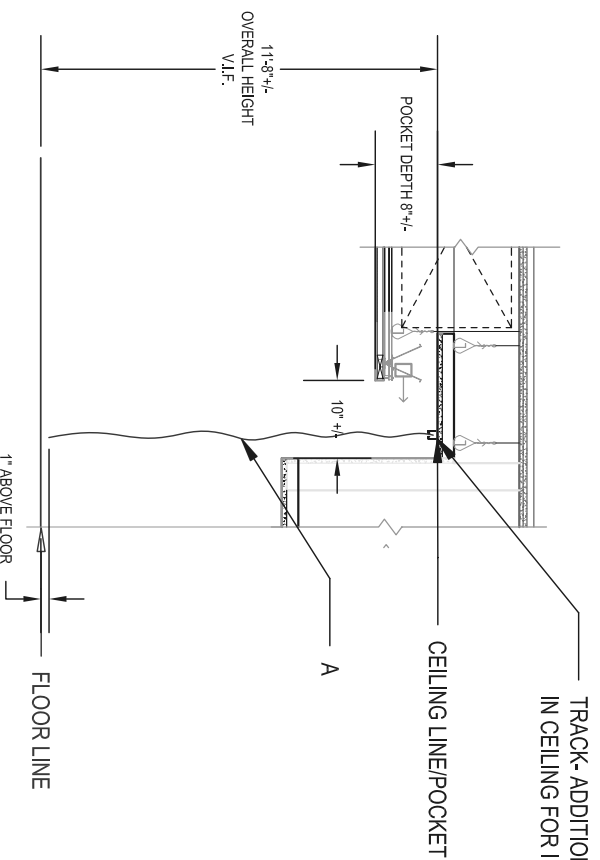
LOUNGE ORB PLAN - TREATMENT A ONLY
 "A" - TRAVERSING SHEER DRAPERY
 SHEERS TO TRAVERSE INTO CENTER OF RADIUS



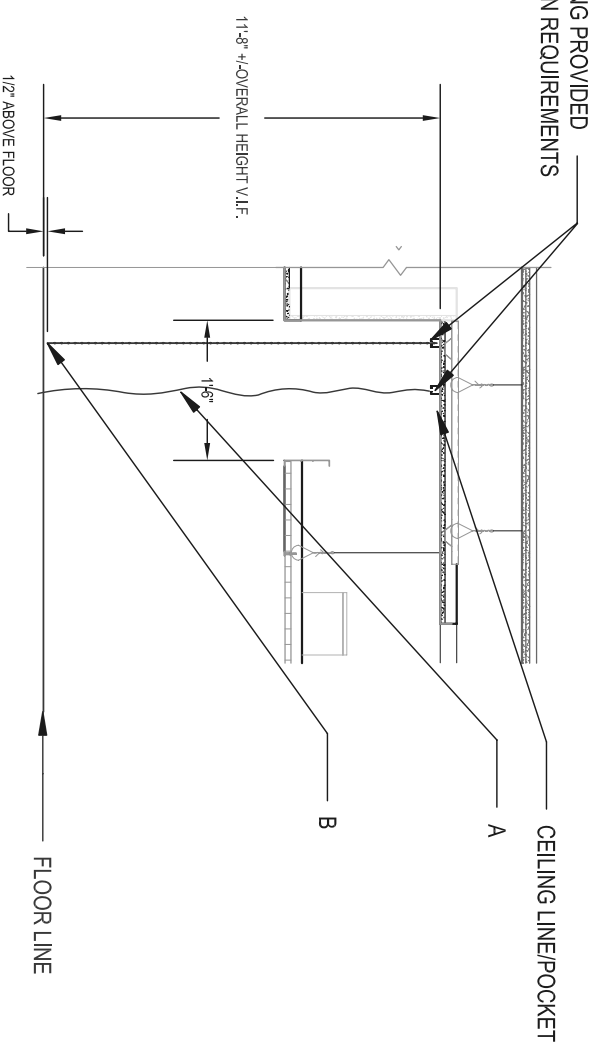
COMMUNAL CIRCLE ORB PLAN - TREATMENT A & B
 "A" - STATIONARY SHEER DRAPERY - INSIDE
 "B" - SHIMMER SCREEN - OUTSIDE

SHS A.I.R. -LOBBY ORBS COMMUNAL AND LOUNGE -GEN IV PROTOTYPE NEW BUILD

RIPPLEFOLD DRAPERY SHEERS AND SHIMMER SCREEN



LOUNGE ORB SECTION - TREATMENT A ONLY



COMMUNAL CIRCLE ORB SECTION - TREATMENT A & B

GENERAL NOTES:

SHEER DRAPERIES TO BE PROTECTED, LABELED AND DRESSED. ALL CEILING RADIUS MUST BE CONFIRMED BEFORE ORDERING HARDWARE. SINGLE TRACK PREFERRED OR DOUBLE BUTTED. ALL INSTALLATIONS ARE TO OCCUR AFTER ALL PAINTING AND FINISH WORK IS COMPLETED AND AMBIENT TEMPERATURE AND HUMIDITY CONDITIONS ARE MAINTAINED TO INTENDED LEVEL. INSTALLER REQUIRED TO VIF (VERIFY IN FIELD) ALL REQUIRED MEASUREMENTS AND SITE CONDITIONS AND DRAPERY ACCORDINGLY. DRAPERY INSTALLER TO COORDINATE ALL COMMUNAL ORB SITE MEASUREMENTS WITH THE GENERAL CONTRACTOR AND THE SHIMMER SCREEN INSTALLOR. THE CEILING HARDWARE FOR THE RIPPLEFOLD DRAPERIES REQUIRE A TEMPLATE TO PLACE AN ORDER.

<p>A</p> <p>RIPPLEFOLD DRAPERY SHEERS</p> <p>GR-103 ITEM ID#135984</p> <p>FABRIC BY PROCUREMENT FABRICATION & INSTALLATION BY OTHER</p>	<p>LOUNGE ORB WILL HAVE A SINGLE TREATMENT A ONLY (TYPICAL) AND WILL BE TRAVERSING INWARD FROM OUTSIDE EDGE EACH RADIUS. HAVE A DOUBLE TREATMENT (TYPICAL) AND WILL BE STATIONARY RIPPLEFOLD DRAPERY SHEERS INSIDE THE SHIMMER SCREEN. FABRIC DESCRIPTION: VALLEY FORGE PATTERN: ORGALLI (118) COLOR: 8796-DM (SOLID COLOR) 118"W</p> <p>"A" - RIPPLEFOLD DRAPERY SHEERS 120% FULLNESS SIDE HEMS 1-1/2" DOUBLE TURNED FOLDS BLIND STITCHED USING COMPATIBLE COLORED THREAD EUROPEAN BOTTOM HEM W/ STRING WEIGHTS. SNAP SYSTEM TO BE USED TO ATTACH DRAPERY TO THE CARRIERS IN THE HARDWARE. SNAP TAPE IS SEWN INTO THE TOP HEM OF THE FLAT PANEL. SNAP SYSTEM ARE TO BE NICKEL PLATED BRASS AND CORROSIVE & RUST RESISTANT.</p> <p>HARDWARE TO BE EQUAL TO THE FOLLOWING SPECIFICATION AND MARRIOTT APPROVED: MFR: FOREST GROUP TRACK: CS 510 CONTRACT TRACK (ALUMINUM EXTRUSION W/ WHITE POWDER COAT), CEILING BRACKET: 3002-25 SMART CLICK HEAVY DUTY CLIP, MASTER CARRIER: 525401-25 (OVERLAP RIGHT) & 52403-25 (OVERLAP LEFT), MULTI-FUNCTIONAL 6 WHEEL MASTER CARRIERS, SNAP CARRIER: 2108-25 WHEEL CONNECTED SNAP CARRIER FOR RIPPLEFOLD @ 120% FULLNESS, 1-7/8" OC, SPACE FOR USE W/ 4 1/4" SNAP TAPE. BATON: CEILING BELOW 10 1/2" USE: 54312-25 60"L WHITE FIBERGLASS 3/8" BATON ADAPTOR. FOR CEILINGS ABOVE 10 1/2" USE #4313-25 72"L.</p>
<p>B</p> <p>SHIMMER SCREEN OWNER SUPPLIED & CONTRACTOR INSTALLED</p>	<p>"B" - SHIMMER SCREEN - 1/4" SHIMMER SCREEN ALUMINUM BEADS (SEALED) W/ 1/4" SPACER INSTALLED EVERY OTHER STRAND</p> <p>SHIMMER SCREEN CONTACT: PHIL SHANNON 914-664-7500 EXT 131</p> <p>741 SOUTH FULTON AVENUE, MOUNT VERNON, NEW YORK 10550</p>

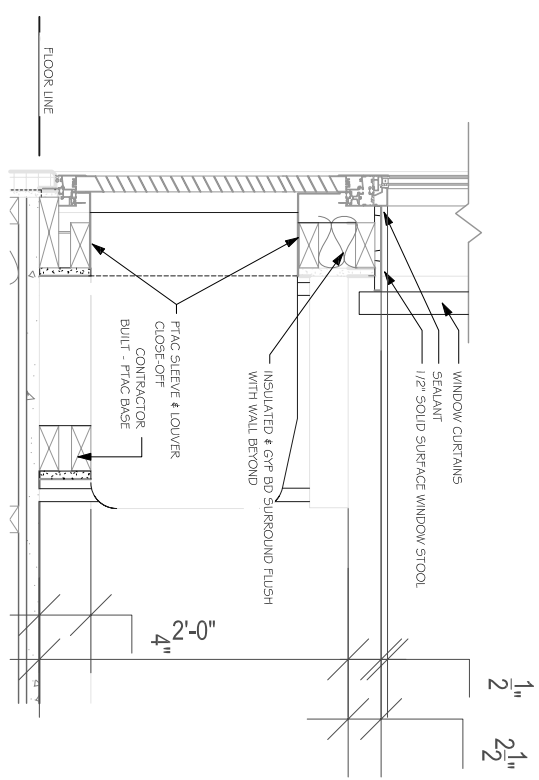
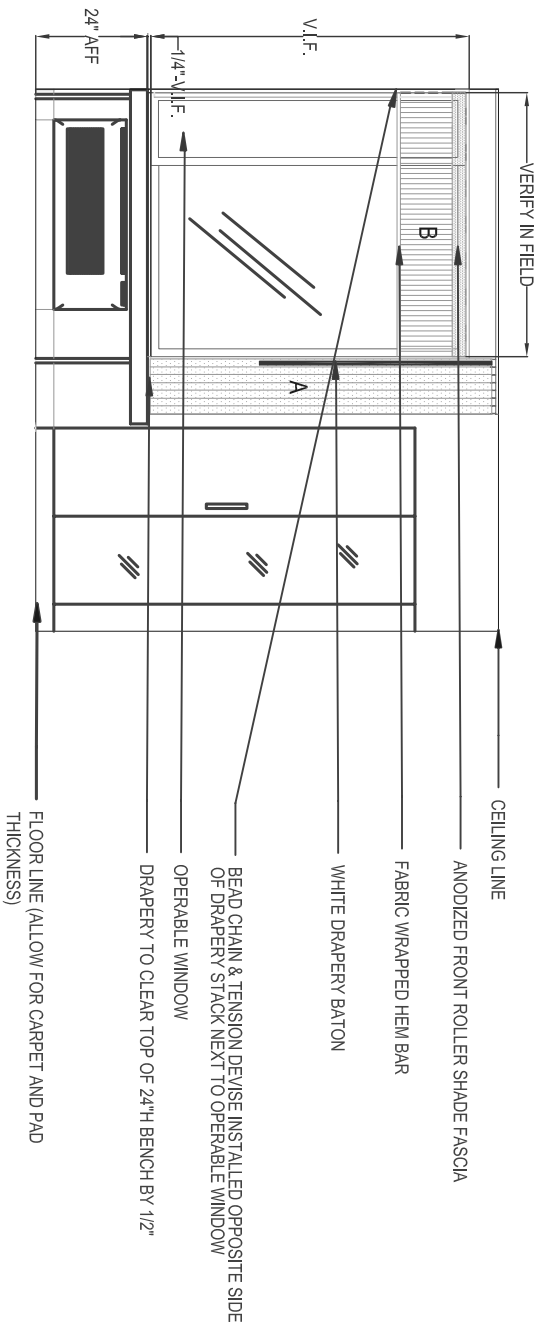
SHS A.I.R. - LOBBY ORBS COMMUNAL AND LOUNGE - GEN IV PROTOTYPE NEW BUILD

RIPPLEFOLD DRAPERY SHEERS AND SHIMMER SCREEN

SCALE: NTS (NOT TO SCALE)

SHEET 1 OF 2

DATE REVISED: 07/29/09



WINDOW SECTION

GENERAL NOTES:
 INSTALL ROLLER SHADES LEVEL, PLUMB, SQUARE AND TRUE ACCORDING TO MANUFACTURERS WRITTEN INSTRUCTIONS, AND LOCATED SO SHADE IS NO CLOSER THAN 2" TO INTERIOR FACE OF GLASS.
 INSTALL ROLLER SHADES INSIDE MOUNT WITH PROPER BLOCKING. IF SITE CONDITIONS DO NOT ALLOW, OUTSIDE MOUNT TO WALL DIRECTLY ABOVE WINDOW CASEMENT.
 ROLLER SHADES ARE TO BE DELIVERED TO SITE IN PROTECTIVE PACKAGING AND LABELED WITH THE PROPER ROOM LOCATION, DRAPERIES PROTECTED, LABELED AND DRESSED.
 ALL INSTALLATIONS ARE TO OCCUR AFTER ALL PAINTING AND FINISH WORK IS COMPLETED AND AMBIENT TEMPERATURE AND HUMIDITY CONDITIONS ARE MAINTAINED TO INTENDED LEVEL.
 INSTALLER REQUIRED TO VIF (VERIFY IN FIELD) ALL REQUIRED MEASUREMENTS AND SITE CONDITIONS AND ADJUST ROLLERSHADES AND DRAPERY ACCORDINGLY.

<p>BLACK-OUT DRAPERY ITEM ID #1133064</p>	<p>FABRIC DESCRIPTION: BLACKOUT DRAPERY FABRIC BY VALLEY FORGE, PATTERN: SLEEPY SUEDE, COLOR: MIST 111-DM, 54"W, NO REPEAT.</p>
<p>A X-101 FABRIC BY PROCUREMENT FABRICATION & INSTALLATION BY OTHER</p>	<p>FABRICATION DESCRIPTION: ONE-WAY DRAW STACKING OPPOSITE OF OPERABLE WINDOW, 60% FULLNESS, TRAVERSING RIPPLEFOLD PANELS W/ WAND CONTROL. CEILING MOUNTED WITH NEW HARDWARE.</p>
<p>B ROLLER SHADE FABRICATOR SUPPLIED & INSTALLED</p>	<p>DESCRIPTION: MANUAL CLUTCH OPERATED FR SOLAR SHADE BY HUNTER DOUGLAS CONTRACT, PATTERN: FINE LINE 35% OPEN, COLOR: WHITE FABRICATION DESCRIPTION: INSIDE MOUNT (IF SITE CONDITIONS ALLOW) W/ RIGHT HAND CLUTCH CONTROL, 3" MIN. ANODIZED BRUSHED ALUMINUM FASCIA. FABRIC WRAPPED HEMBAR.</p>

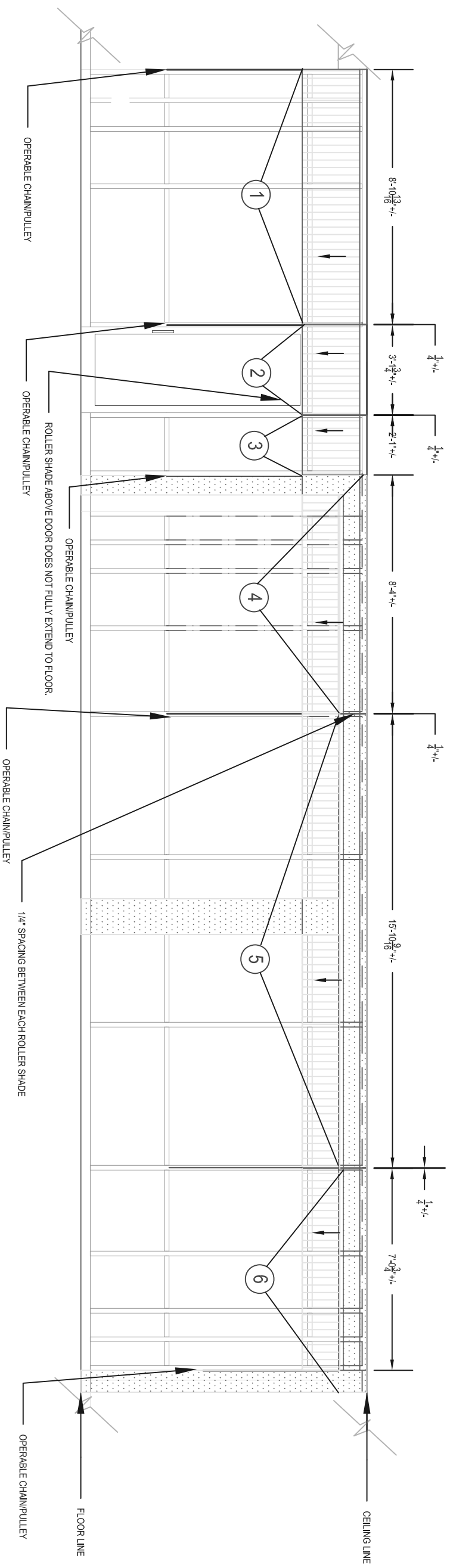
NOTE: IN ORDER TO ASSURE ACCURATE WINDOW TREATMENT MEASUREMENTS, THE FOLLOWING ITEMS MUST BE INSTALLED: CARPET & PAD; PTAC UNIT, WINDOW SILL & BENCH.
 OPTIONAL BLACK-OUT ROLLER SHADE & ALLUMINUM SIDE CHANNELS ARE AVAILABLE FOR MAXIMUM LIGHT CONTROL.

SHS A.I.R. GUESTROOM DRAPERY ELEVATION- GEN IV PROTOTYPE - NEW BUILD

RIPPLE FOLD ONE-WAY DRAW BLACK-OUT LINED DRAPERYW/ ROLLERSHADE

SCALE: NTS (NOT TO SCALE)

DATE REVISED: 10/13/09



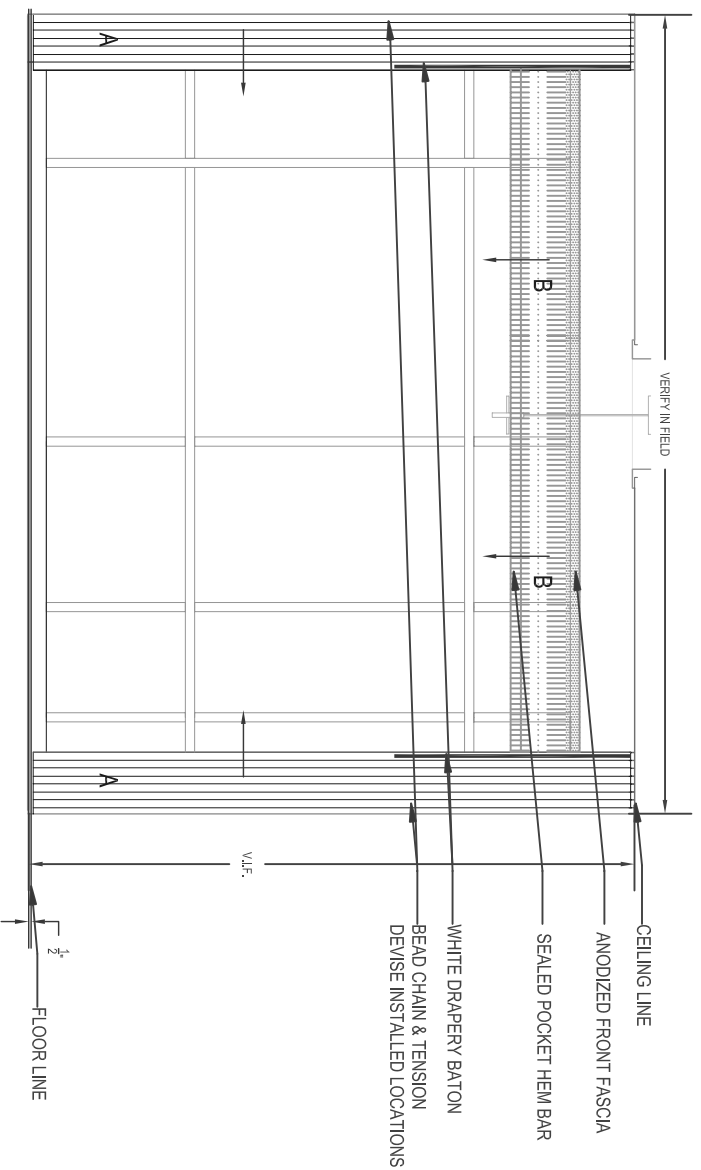
NOTE: FABRICATOR TO FIELD VERIFY ALL DIMENSIONS PRIOR TO FABRICATION

<p>ROLLERSHADE</p>	<p>SHEER ROLLER SHADE- OUTSIDE MOUNT (AT EDGE OF THE WINDOW FRAME TO ENSURE BLOCKING FASCIA- 3" X 3" ANODIZED ALUMINUM FASCIA). OPERABLE CHAIN/PULLY IS TO BE LOCATED ON THE RIGHT HAND SIDE OF EACH ROLLER SHADE</p> <p>① 6 INDIVIDUAL SHADES- VARIOUS WIDTHS - ROLLER SHADES SIZES TO BE FIELD VERIFIED BY INSTALLER. WIDTHS OF SOLAR SHADES MAY VARY BASED ON SITE CONDITIONS. OTHER SHADES WIDTHS MAY BE MORE OPTIMAL.</p>
<p>VENDOR:</p>	<p>VENDOR: HUNTER DOUGLAS SOLAR SHADES -FIRE RATED PATTERN: FINE LINE- 35% OPEN COLOR: WHITE HEAT SEALED HEM BAR WITH EXPOSED BRUSHED ALUMINUM METAL BAR ACROSS BOTTOM</p> <p>NOTE: FABRICATOR TO FIELD VERIFY ALL DIMENSIONS PRIOR TO FABRICATION</p>

SHS A.I.R. FRONT LOBBY WINDOWS -NEW BUILD
SHEER ROLLER SHADES- OUTSIDE MOUNT

SCALE: 1/4" =1'-0"

DATE ISSUED: 4.3.2008



TYPICAL CONDITION: A - CEILING MOUNT B - INSIDE MOUNT

GENERAL NOTES:
 INSTALL ROLLER SHADES LEVEL, PLUMB, SQUARE AND TRUE ACCORDING TO MANUFACTURERS WRITTEN INSTRUCTIONS, AND LOCATED SO SHADE IS NO CLOSER THAN 2" TO INTERIOR FACE OF GLASS.
 INSTALL ROLLER SHADES WALL MOUNT WITH PROPER BLOCKING.
 ROLLER SHADES ARE TO BE DELIVERED TO SITE IN PROTECTIVE PACKAGING AND LABELED WITH THE PROPER ROOM LOCATION, DRAPERIES PROTECTED, LABELED AND DRESSED.
 ALL INSTALLATIONS ARE TO OCCUR AFTER ALL PAINTING AND FINISH WORK IS COMPLETED AND AMBIENT TEMPERATURE AND HUMIDITY CONDITIONS ARE MAINTAINED TO INTENDED LEVEL.
 INSTALLER REQUIRED TO VIF (VERIFY IN FIELD) ALL REQUIRED MEASUREMENTS AND SITE CONDITIONS AND ADJUST ROLLER SHADES AND DRAPERY ACCORDINGLY.

<p>A BLACKOUT DRAPERY- MR-102 ITEM ID#136849 FABRIC BY PROCUREMENT FABRICATION & INSTALLATION BY OTHER</p>	<p>FABRIC DESCRIPTION: BLACKOUT DRAPERY FABRIC BY VALLEY FORGE, PATTERN: SILK SUEDE, COLOR: PARCHMENT-DM, 54"W, NO REPEAT. FABRICATION DESCRIPTION: CENTER DRAW TRAVERSING RIPPLEFOLD PANELS W/ BATON CONTROL 120% FULL. CEILING MOUNTED W/ NEW HARDWARE.</p>
<p>B ROLLER SHADE FABRICATOR SUPPLIED & INSTALLED</p>	<p>DESCRIPTION:INSIDE MOUNT IF SITE CONDITIONS ALLOW MANUAL CLUTCH OPERATED FR SOLAR SHADE BY HUNTER DOUGLAS CONTRACT, PATTERN: FINE LINE 35% OPEN, COLOR: WHITE FABRICATION DESCRIPTION: WALL MOUNT W/ RIGHT HAND CLUTCH CONTROL, 3"H MIN. ANODIZED BRUSHED ALUMINUM FASCIA, FABRIC WRAPPED HEMBAR.</p>

SHS A.I.R. MEETING ROOM DRAPERY ELEVATION-GEN IV PROTOTYPE NEW BUILD
 RIPPLE-FOLD CENTER-DRAW BLACK-OUT LINED DRAPERY W/ INSIDE MOUNT ROLLERSHADE

SCALE: NTS (NOT TO SCALE)

DATE REVISED: 10/13/09