

Staybridge Suites – Standardized Room Decor
Vista, Spice, Chocolate, Sage Schemes – Public Area

InterContinental Hotels Group

Design & Construction
Three Ravinia Drive, Suite 100
Atlanta, GA 30346

AREA: Great Room

Manufacturer:

Fabriquilt
Attn: Barry Oltsik
901 East 14th Avenue
North Kansas City, MO 64116
P: 816-421-2000
F: 816-471-2853
E: barry@fabri-quilt.com

SPEC NO: SP-601

DESCRIPTION: Custom French Pleat – Window treatment to consist of (2) Full-length Stationary Side Panels, (2) traversing, two-way draw sheer panels.

FINISHED SIZE: **To be verified on-site. Submit scaled drawing for approval.**

Fabrication to be in accordance with IHG standards as stated in the FF&E Construction and Specification Guidelines and as follows:

GENERAL NOTES:

1. Products must be contract quality, suitable for commercial use.
2. Products must meet or exceed all applicable state & local codes.
3. **See SP-601A for drapery side panels & SP-601B for sheer panels.**

GENERAL CONSTRUCTION:

1. All hems to be blind stitched; hems must be even and not bow due to weights or irregular stitches.
2. Batons to be clear acrylic, front mounted, 4'0" long.
3. Pins to be stainless steel.
4. Fabricator to verify all site conditions, dimensions, materials required for installation, and confirm fabric yardages.
5. Pattern-matched at seams; seams to be hidden behind pleats.

SIDE PANELS:

1. Stationary, full-length decorative side-panels.
2. Finished length to be 1/2" above top of carpet.
3. Fabric to be inherently flame retardant or treated to meet flame retardancy codes.
4. 200-250% fullness, overlock seams with safety stitch and surged, thread to match predominant color of face fabric.
5. French Pleat, 4 or 5" double heading, 4 or 5" double hem, 1-1/2" double-side hem.
6. Weights: 1" continuous covered lead weights tacked at hemline on each seam and each hem.
7. Lining: FR 2-pass blackout, inherently flame retardant (100%), color: white (to be provided by fabricator).
8. Wherever possible, side panels should not cover window glass area but should flank windows to allow maximum light/view and maximize overall width of window treatment.
9. Panel on single track on each side, width as required for finished width of window.
10. Weights: 1" continuous covered lead weights tacked at hemline on each seam and each hem.
11. Fabric SP-601A: Stripes to run vertically.
12. Side panels to be wall or ceiling mounted behind drapery pocket. Refer to drawing for details.

SHEERS:

1. Fully traversing, 2-way draw, baton draw (minimum 48" baton).
2. Fabric to be inherently flame retardant or treated to meet flame retardancy codes.
3. 250-300% fullness, overlock seams with safety stitch and surged, thread to match predominant color of face fabric.
4. French Pleat, 4 or 5" double heading, 4 or 5" double hem, 1-1/2" double-side hem.
5. Weights: 1" continuous covered lead weights tacked at hemline on each seam and each hem.

QUANTITY: TBD

UNIT COST: \$ TBD

TOTAL COST: \$ TBD

ISSUE DATE:
10/15/11

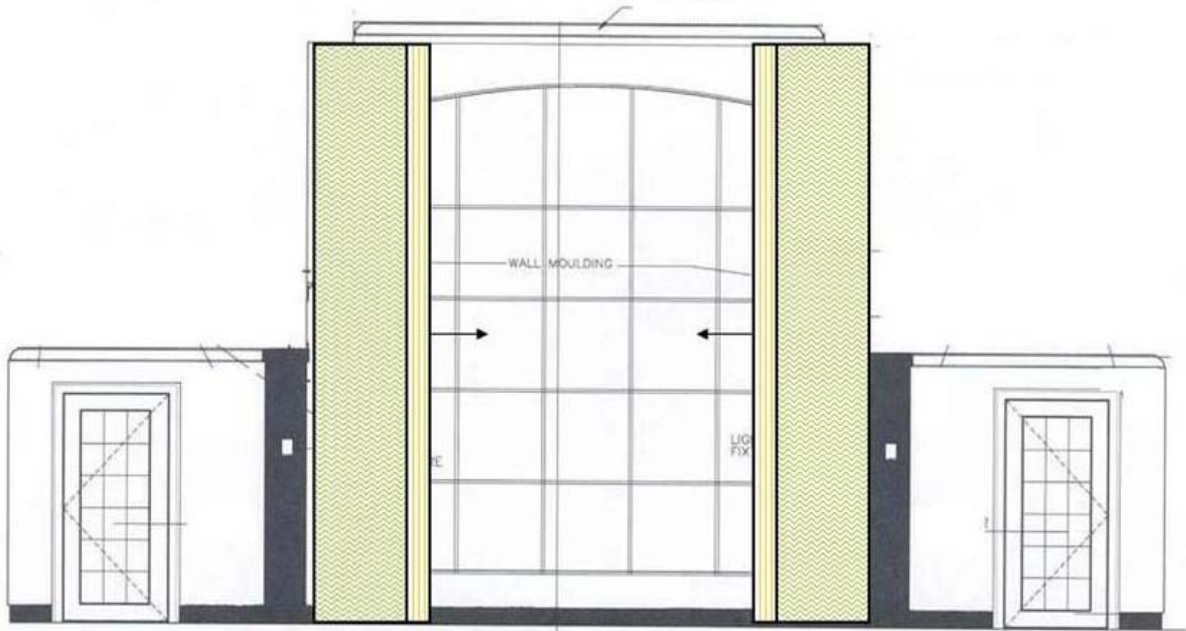
REVISION DATE:

REV. NO:

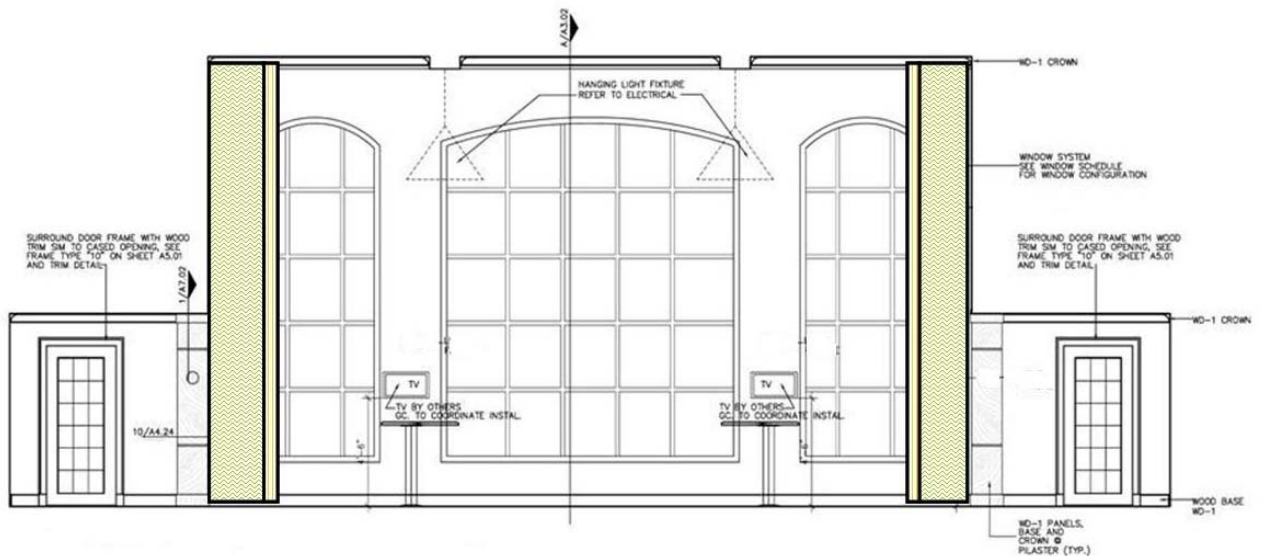
SPEC NO:
SP-601

All orders must be marked as specified by IHG. All installed fabrics, upholstery, carpet, wallcovering, and other finish materials must meet local fire codes and regulations. Manufacturer must provide flame certificate to owner/purchaser at time order is shipped. Fabricator and/or installer must confirm the exact quantities required. All substitutions must be approved by IHG prior to ordering. Manufacturers must provide maintenance instructions. All shop drawings, finish samples, artwork and/or strike-offs must be submitted to IHG, for approval prior to production.

AREA: Great Room



Window Treatment Elevation at Great Room – A Plan



Window Treatment Elevation at Great Room – B Plan

QUANTITY: TBD

UNIT COST: \$ TBD

TOTAL COST: \$ TBD

ISSUE DATE:
 10/15/11

REVISION DATE:

REV. NO:

SPEC NO:

SP-601

All orders must be marked as specified by IHG. All installed fabrics, upholstery, carpet, wallcovering, and other finish materials must meet local fire codes and regulations. Manufacturer must provide flame certificate to owner/purchaser at time order is shipped. Fabricator and/or installer must confirm the exact quantities required. All substitutions must be approved by IHG prior to ordering. Manufacturers must provide maintenance instructions. All shop drawings, finish samples, artwork and/or strike-offs must be submitted to IHG, for approval prior to production.

Staybridge Suites – Standardized Room Decor
Refreshed Chocolate and Sage Schemes – Public Area

InterContinental Hotels Group

Design & Construction
Three Ravinia Drive, Suite 100
Atlanta, GA 30346

AREA: Great Room

MANUFACTURER:

Fabricut
Attn: Elizabeth Hassell
9303 East 46th Street
Tulsa, OK 74145
P: 800-999-5005 x 6314
F: 918-665-1177
E: elizabeth.hassell@fabricut.com

REP FIRM:

Cindy Royals
P: 770-792-7156
E: Cindy.Royals@Fabricut.com

SPEC NO: **SP-601A (C,S)**

DESCRIPTION: Fabric for Drapery Fixed Side Panel

MODEL/STYLE NO: Premiere

COLOR: Jade

CONTENT: 100% FR Polyester

DIMENSIONS: 60" W; Repeat: 0" Vertical, 30" Horizontal

Fabrication to be in accordance with IHG standards as stated in the FF&E Construction and Specification Guidelines and as follows:

NOTES:

1. Refer to SP-601 (C) for window treatment fabrication specification.
2. Fabric to be of contract quality and suitable for commercial use.
3. Per manufacturer, fabric meets or exceeds the following requirements: NFPA 701, Class 1; 15,000 double rubs, and all ACT standards.
4. Fabricator to verify all site conditions, dimensions, materials required for installation, and confirm fabric yardages.
5. Fabric must be treated for fire retardancy or meet applicable fire codes.
6. Manufacturer to ship all excess fabric to property for attic stock.
7. No products shall infringe on any third party patents, copyrights, trademarks or other intellectual property rights.



Not for Color / Not to Scale / Design Intent Only

QUANTITY: TBD

UNIT COST: \$ TBD

TOTAL COST: \$ TBD

ISSUE DATE:
8/01/11

REVISION DATE:

REV. NO:

SPEC NO:

SP-601A (C,S)

All orders must be marked as specified by IHG. All installed fabrics, upholstery, carpet, wallcovering, and other finish materials must meet local fire codes and regulations. Manufacturer must provide flame certificate to owner/purchaser at time order is shipped. Fabricator and/or installer must confirm the exact quantities required. All substitutions must be approved by IHG prior to ordering. Manufacturers must provide maintenance instructions. All shop drawings, finish samples, artwork and/or strike-offs must be submitted to IHG, for approval prior to production.

Staybridge Suites – Standardized Room Decor
Refreshed Chocolate and Sage Schemes – Public Area

InterContinental Hotels Group

Design & Construction
Three Ravinia Drive, Suite 100
Atlanta, GA 30346

AREA: Great Room

MANUFACTURER:
P/Kaufmann Contract
Attn: Travis Dennington
P: 404.835.2610 Office
Cel 214-455-3552
E: TEXTILEREP@aol.com

REP FIRM:

SPEC NO: **SP-601B (C,S)**
DESCRIPTION: Fabric for Drapery Sheer
MODEL/STYLE NO: Drift
COLOR: 262 Atlantic
CONTENT: 100% Polyester
DIMENSIONS: 120" W; Repeat: N/A

Fabrication to be in accordance with IHG standards as stated in the FF&E Construction and Specification Guidelines and as follows:

NOTES:

1. Refer to SP-601 for window treatment fabrication specification.
2. Fabric to be of contract quality and suitable for commercial use.
3. Per manufacturer, fabric meets or exceeds the following requirements: NFPA 701, Class 1, and all ACT standards.
4. Fabricator to verify all site conditions, dimensions, materials required for installation, and confirm fabric yardages.
5. Fabric must be treated for fire retardancy or meet applicable fire codes.
6. Manufacturer to ship all excess fabric to property for attic stock.
7. No products shall infringe on any third party patents, copyrights, trademarks or other intellectual property rights.



Not for Color / Not to Scale / Design Intent Only

QUANTITY: TBD

UNIT COST: \$ TBD

TOTAL COST: \$ TBD

ISSUE DATE:
8/01/11

REVISION DATE:

REV. NO:

SPEC NO:

SP-601B (C,S)

All orders must be marked as specified by IHG. All installed fabrics, upholstery, carpet, wallcovering, and other finish materials must meet local fire codes and regulations. Manufacturer must provide flame certificate to owner/purchaser at time order is shipped. Fabricator and/or installer must confirm the exact quantities required. All substitutions must be approved by IHG prior to ordering. Manufacturers must provide maintenance instructions. All shop drawings, finish samples, artwork and/or strike-offs must be submitted to IHG, for approval prior to production.

Staybridge Suites – Standardized Room Decor
Vista, Spice, Chocolate, Sage Schemes – Public Area

InterContinental Hotels Group

Design & Construction
Three Ravinia Drive, Suite 100
Atlanta, GA 30346

AREA: Breakfast Buffet, Den, Fitness Room, Laundry Room, Offices/Administrative Areas, Back of House

MANUFACTURER:
SWF Contract / Graber
Attn: Barry Oltsik
901 East 14th Avenue
North Kansas City, MO 64116
P: 816-421-2000
F: 816-471-2853
E: barry@fabri-quilt.com

REP FIRM:
Quiltcraft
Attn: David Pearson
P: 214-376-1841
E: dpearson@quiltcraft.com

SPEC NO: SP-602

DESCRIPTION: Window Blinds at Breakfast Buffet, Den, Fitness Room, Laundry Room, Offices/Administrative Areas, and Back of House

COLLECTION: Graber Premium Lake Forest 2" Wood Blinds

COLOR: 2716 Espresso (Blinds, Cord tilt, Lift cord, Standard Tassel)

VALANCE: Flat with no returns (inside mount)

FINISHED SIZE: **To be field verified on-site**

Fabrication to be in accordance with IHG standards as stated in the FF&E Construction and Specification Guidelines and as follows:

NOTES:

1. Product must be contract quality, suitable for commercial use.
2. Product must meet or exceed all applicable state & local codes.
3. Per manufacturer, fabric meets or exceeds the following requirements: NFPA 701.
4. All mechanism and hardware to be included to properly hang window blind system for full operating use. All hardware to be heavy duty and suitable for commercial installation.
5. Fabricator to verify all site conditions, and all dimensions. Fabricator to take field measurements before preparation of shop drawings and fabrication to ensure proper fitting of window blind system.
6. Blinds to be inside mounted within window mullion.
7. Valance to be flat (no returns).
8. Cord tilt to be located on left side of blind. Lift cord to be located on right side of blind.
9. Universal mounting brackets to be provided to accommodate side mount or top mount.
10. To be installed by General Contractor. Adjust shade operating assemblies for smooth and proper operation. Clean soiled surfaces with solutions specified by manufacturer.
11. Refer to drawings for location.



Not to Scale / Not for Color / Design Intent Only

QUANTITY: TBD

UNIT COST: \$ TBD

TOTAL COST: \$ TBD

ISSUE DATE:
10/15/11

REVISION DATE:

REV. NO:

SPEC NO:

SP-602

All orders must be marked as specified by IHG. All installed fabrics, upholstery, carpet, wallcovering, and other finish materials must meet local fire codes and regulations. Manufacturer must provide flame certificate to owner/purchaser at time order is shipped. Fabricator and/or installer must confirm the exact quantities required. All substitutions must be approved by IHG prior to ordering. Manufacturers must provide maintenance instructions. All shop drawings, finish samples, artwork and/or strike-offs must be submitted to IHG, for approval prior to production.

Staybridge Suites – Standardized Room Decor
Vista, Spice, Chocolate, Sage Schemes – Public Area

InterContinental Hotels Group

Design & Construction
Three Ravinia Drive, Suite 100
Atlanta, GA 30346

AREA: Conference Room, Meeting Room

Manufacturer:

Fabriquilt
Attn: Barry Oltsik
901 East 14th Avenue
North Kansas City, MO 64116
P: 816-421-2000
F: 816-471-2853
E: barry@fabri-quilt.com

SPEC NO: SP-603

DESCRIPTION: Straight Cornice, Full Length Fixed Side Panels, with Two-way Draw Sheers & Black-out Panels over PTAC

FINISHED SIZE: **To be verified on-site. Submit scaled drawing for approval.**

Fabrication to be in accordance with IHG standards as stated in the FF&E Construction and Specification Guidelines and as follows:

GENERAL NOTES:

1. Products must be contract quality, suitable for commercial use.
2. Products must meet or exceed all applicable state & local codes.
3. **See SP-603A for drapery side panels and cornice & SP-603B for sheer panels.**

GENERAL CONSTRUCTION:

1. All hems to be blind stitched; hems must be even and not bow due to weights or irregular stitches.
2. Batons to be clear acrylic, front mounted, 4'0" long.
3. Pins to be stainless steel.
4. Fabricator to verify all site conditions, dimensions, materials required for installation, and confirm fabric yardages.
5. Pattern-matched at seams; seams to be hidden behind pleats.

SIDE PANELS:

1. Stationary, full-length decorative side-panels.
2. Finished length to be 1/2" above top of carpet.
3. Fabric to be inherently flame retardant or treated to meet flame retardancy codes.
4. 200-250% fullness, overlock seams with safety stitch and surged, thread to match predominant color of face fabric.
5. French Pleat, 4 or 5" double heading, 4 or 5" double hem, 1-1/2" double-side hem.
6. Weights: 1" continuous covered lead weights tacked at hemline on each seam and each hem.
7. Lining: FR 2-pass blackout, inherently flame retardant (100%), color: white (to be provided by fabricator).
8. Wherever possible, side panels should not cover window glass area but should flank windows to allow maximum light/view and maximize overall width of window treatment.
9. Panel on single track on each side, width as required for finished width of window.
10. Weights: 1" continuous covered lead weights tacked at hemline on each seam and each hem.
11. Fabric SP-603A: Stripes to run vertically.

QUANTITY: TBD

UNIT COST: \$ TBD

TOTAL COST: \$ TBD

ISSUE DATE:
10/15/11

REVISION DATE:

REV. NO:

SPEC NO:
SP-603

All orders must be marked as specified by IHG. All installed fabrics, upholstery, carpet, wallcovering, and other finish materials must meet local fire codes and regulations. Manufacturer must provide flame certificate to owner/purchaser at time order is shipped. Fabricator and/or installer must confirm the exact quantities required. All substitutions must be approved by IHG prior to ordering. Manufacturers must provide maintenance instructions. All shop drawings, finish samples, artwork and/or strike-offs must be submitted to IHG, for approval prior to production.

Staybridge Suites – Standardized Room Decor
Vista, Spice, Chocolate, Sage Schemes – Public Area

InterContinental Hotels Group

Design & Construction
Three Ravinia Drive, Suite 100
Atlanta, GA 30346

AREA: Conference Room, Meeting Room

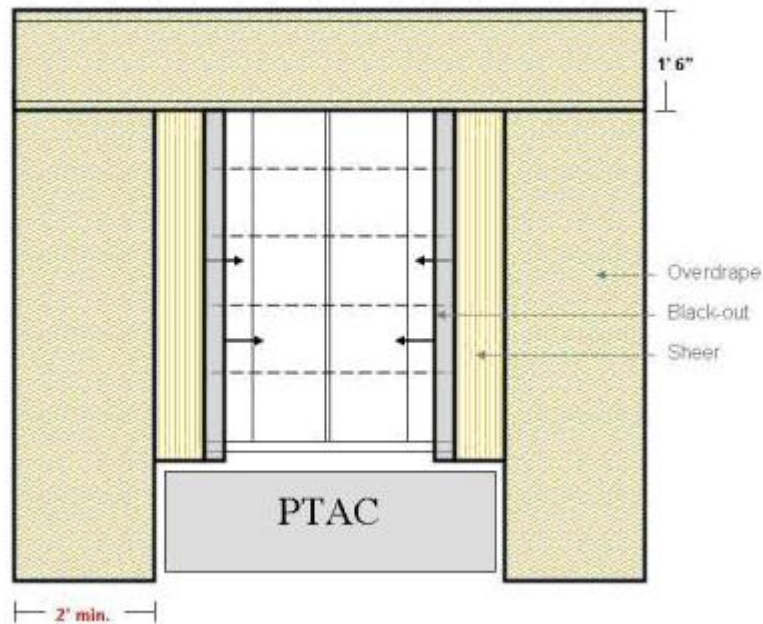
SHEERS:

1. Fully traversing, 2-way draw, baton draw (minimum 48" baton), over PTAC.
2. Fabric to be inherently flame retardant or treated to meet flame retardancy codes.
3. 250-300% fullness, overlock seams with safety stitch and surged, thread to match predominant color of face fabric.
4. French Pleat, 4 or 5" double heading, 4 or 5" double hem, 1-1/2" double-side hem.
5. Weights: 1" continuous covered lead weights tacked at hemline on each seam and each hem.
6. **If no PTAC present, sheers and blackout panels are to extend to have a finished length 1/2" above top of carpet.**
7. FR 3-pass blackout, inherently flame retardant (100%), color: white (to be provided by fabricator). Blackout to be fully operable and on separate track from sheers.

UPHOLSTERED CORNICE:

1. Wall to wall. Approximately 1' 3" height (to cover top of window at least 1-2"). Top flush to ceiling.
2. Welt at top and bottom.
3. Pattern-matched at seams; seams to be hidden behind pleats.
4. No dust cap (cornice to be installed as close to ceiling as possible).

Straight Cornice, Full-length Stationary Side Panels, with Two-way Draw Sheers & Black-out Panels



Not to Scale / Design Intent Only

QUANTITY: TBD

UNIT COST: \$ TBD

TOTAL COST: \$ TBD

ISSUE DATE:
10/15/11

REVISION DATE:

REV. NO:

SPEC NO:

SP-603

All orders must be marked as specified by IHG. All installed fabrics, upholstery, carpet, wallcovering, and other finish materials must meet local fire codes and regulations. Manufacturer must provide flame certificate to owner/purchaser at time order is shipped. Fabricator and/or installer must confirm the exact quantities required. All substitutions must be approved by IHG prior to ordering. Manufacturers must provide maintenance instructions. All shop drawings, finish samples, artwork and/or strike-offs must be submitted to IHG, for approval prior to production.

Staybridge Suites – Standardized Room Decor
Refreshed Chocolate and Sage Schemes – Public Area

InterContinental Hotels Group

Design & Construction
Three Ravinia Drive, Suite 100
Atlanta, GA 30346

AREA: Conference Room, Meeting Room

MANUFACTURER:

Fabricut
Attn: Elizabeth Hassell
9303 East 46th Street
Tulsa, OK 74145
P: 800-999-5005 x 6314
F: 918-665-1177
E: elizabeth.hassell@fabricut.com

REP FIRM:

Cindy Royals
P: 770-792-7156
E: Cindy.Royals@Fabricut.com

SPEC NO: **SP-603A (C,S)**

DESCRIPTION: Fabric at Drapery Side Panels and Cornice

MODEL/STYLE NO: Valli-F

COLOR: River

CONTENT: 100% FR Polyester

DIMENSIONS: 58" W; Repeat: 14.5" Horizontal

Fabrication to be in accordance with IHG standards as stated in the FF&E Construction and Specification Guidelines and as follows:

NOTES:

1. Refer to SP-603 for drapery fabrication specification.
2. Fabric to be of contract quality and suitable for commercial use.
3. Per manufacturer, fabric meets or exceeds the following requirements: NFPA 701, Class 1; and all ACT standards.
4. Fabricator to verify all site conditions, dimensions, materials required for installation, and confirm fabric yardages.
5. Fabric must be treated for fire retardancy or meet applicable fire codes.
6. Manufacturer to ship all excess fabric to property for attic stock.
7. No products shall infringe on any third party patents, copyrights, trademarks or other intellectual property rights.



Not for Color / Not to Scale / Design Intent Only

QUANTITY: TBD

UNIT COST: \$ TBD

TOTAL COST: \$ TBD

ISSUE DATE:
8/01/11

REVISION DATE:

REV. NO:

SPEC NO:

SP-603A (C,S)

All orders must be marked as specified by IHG. All installed fabrics, upholstery, carpet, wallcovering, and other finish materials must meet local fire codes and regulations. Manufacturer must provide flame certificate to owner/purchaser at time order is shipped. Fabricator and/or installer must confirm the exact quantities required. All substitutions must be approved by IHG prior to ordering. Manufacturers must provide maintenance instructions. All shop drawings, finish samples, artwork and/or strike-offs must be submitted to IHG, for approval prior to production.

Staybridge Suites – Standardized Room Decor
Refreshed Chocolate and Sage Schemes – Public Area

InterContinental Hotels Group

Design & Construction
Three Ravinia Drive, Suite 100
Atlanta, GA 30346

AREA: Conference Room, Meeting Room

MANUFACTURER:

P/Kaufmann Contract
Attn: Travis Dennington
P: 404.835.2610 Office
C: 214-455-3552
E: TEXTILEREP@aol.com

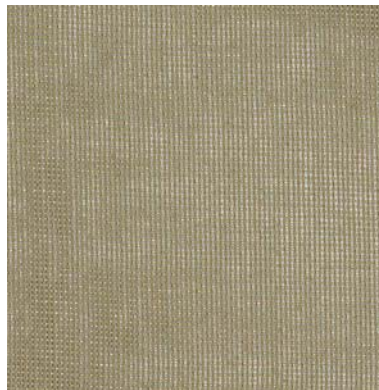
REP FIRM:

SPEC NO: **SP-603B (C,S)**
DESCRIPTION: Fabric for Drapery Sheer
MODEL/STYLE NO: Drift
COLOR: 874 Driftwood
CONTENT: 100% Polyester
DIMENSIONS: 120" W; Repeat: N/A

Fabrication to be in accordance with IHG standards as stated in the FF&E Construction and Specification Guidelines and as follows:

NOTES:

1. Refer to SP-603 (C) for drapery fabrication specification.
2. Fabric to be of contract quality and suitable for commercial use.
3. Per manufacturer, fabric meets or exceeds the following requirements: NFPA 701 Class 1, and all ACT standards.
4. Fabric must be treated for fire retardancy or meet applicable fire codes.
5. Manufacturer to verify yardage requirements prior to order.
6. No products shall infringe on any third party patents, copyrights, trademarks or other intellectual property rights.



Not for Color / Not to Scale / Design Intent Only

QUANTITY: TBD

UNIT COST: \$ TBD

TOTAL COST: \$ TBD

ISSUE DATE:
8/01/11

REVISION DATE:

REV. NO:

SPEC NO:

SP-603B (C,S)

All orders must be marked as specified by IHG. All installed fabrics, upholstery, carpet, wallcovering, and other finish materials must meet local fire codes and regulations. Manufacturer must provide flame certificate to owner/purchaser at time order is shipped. Fabricator and/or installer must confirm the exact quantities required. All substitutions must be approved by IHG prior to ordering. Manufacturers must provide maintenance instructions. All shop drawings, finish samples, artwork and/or strike-offs must be submitted to IHG, for approval prior to production.

Staybridge Suites – Standardized Room Decor
Vista, Spice, Chocolate, Sage Schemes – Public Area

InterContinental Hotels Group

Design & Construction
Three Ravinia Drive, Suite 100
Atlanta, GA 30346

AREA: Corridor

MANUFACTURER:

Fabriquilt
Attn: Barry Oltsik
901 East 14th Avenue
North Kansas City, MO 64116
P: 816-421-2000
F: 816-471-2853
E: barry@fabri-quilt.com

SPEC NO: SP-604

DESCRIPTION: Window Treatment at Corridor
Upholstered wall to wall cornice with full Length center draw sheers

FINISHED SIZE: To be verified on-site. Submit scaled drawing for approval.

GENERAL NOTES:

1. Products must be contract quality, suitable for commercial use.
2. Products must meet or exceed all applicable state & local codes.
3. **See SP-604A for fabric at cornice & SP-604B for sheer panels.**

GENERAL CONSTRUCTION:

1. All hems to be blind stitched; hems must be even and not bow due to weights or irregular stitches.
2. Batons to be clear acrylic, front mounted, 4'-0" long.
3. Pins to be stainless steel.
4. Fabricator to verify all site conditions, dimensions, materials required for installation, and confirm fabric yardages.
5. Pattern-matched at seams; seams to be hidden behind pleats.

SHEERS:

1. Fully traversing, full-length, 2-way draw, baton draw (minimum 48" baton).
2. Fabric to be inherently flame retardant or treated to meet flame retardancy codes.
3. 200% fullness, overlock seams with safety stitch and surged, thread to match predominant color of face fabric.
4. French Pleat, 4 or 5" double heading, 4 or 5" double hem, 1-1/2" double-side hem.
5. Weights: 1" continuous covered lead weights tacked at hemline on each seam and each hem.

UPHOLSTERED CORNICE:

1. Wall to wall. Approximately 1' 3" height (to cover top of window at least 1-2". Top flush to ceiling).
2. Welt at top and bottom.
3. Pattern-matched at seams; seams to be hidden behind pleats.
4. No dust cap (cornice to be installed as close to ceiling as possible).
5. Stripes on fabric to be vertical and centered on cornice.

QUANTITY: TBD

UNIT COST: \$ TBD

TOTAL COST: \$ TBD

ISSUE DATE:

10/15/11

REVISION DATE:

REV. NO:

SPEC NO:

SP-604

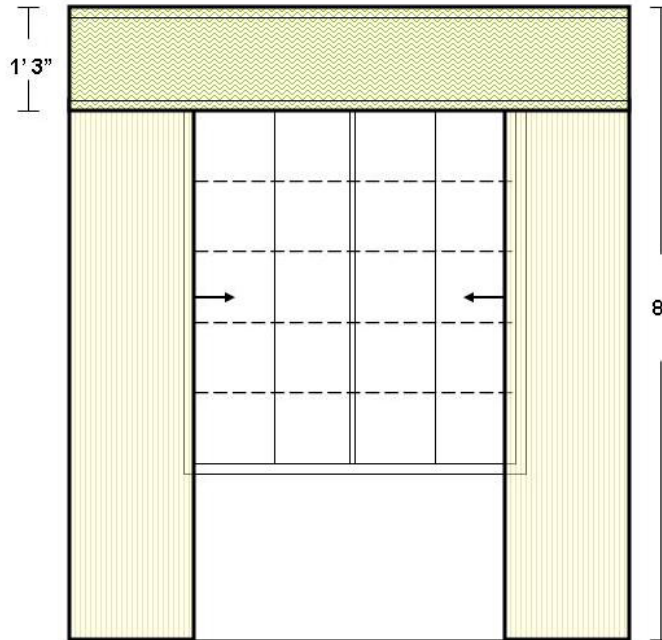
All orders must be marked as specified by IHG. All installed fabrics, upholstery, carpet, wallcovering, and other finish materials must meet local fire codes and regulations. Manufacturer must provide flame certificate to owner/purchaser at time order is shipped. Fabricator and/or installer must confirm the exact quantities required. All substitutions must be approved by IHG prior to ordering. Manufacturers must provide maintenance instructions. All shop drawings, finish samples, artwork and/or strike-offs must be submitted to IHG, for approval prior to production.

Staybridge Suites – Standardized Room Decor
Vista, Spice, Chocolate, Sage Schemes – Public Area

InterContinental Hotels Group

Design & Construction
Three Ravinia Drive, Suite 100
Atlanta, GA 30346

AREA: Corridor



Not to Scale

QUANTITY: TBD

UNIT COST: \$ TBD

TOTAL COST: \$ TBD

ISSUE DATE:
10/15/11

REVISION DATE:

REV. NO:

SPEC NO:

SP-604

All orders must be marked as specified by IHG. All installed fabrics, upholstery, carpet, wallcovering, and other finish materials must meet local fire codes and regulations. Manufacturer must provide flame certificate to owner/purchaser at time order is shipped. Fabricator and/or installer must confirm the exact quantities required. All substitutions must be approved by IHG prior to ordering. Manufacturers must provide maintenance instructions. All shop drawings, finish samples, artwork and/or strike-offs must be submitted to IHG, for approval prior to production.

Staybridge Suites – Standardized Room Decor
Refreshed Chocolate and Sage Schemes – Public Area

InterContinental Hotels Group

Design & Construction
Three Ravinia Drive, Suite 100
Atlanta, GA 30346

AREA: Corridor

MANUFACTURER:

Fabricut
Attn: Elizabeth Hassell
9303 East 46th Street
Tulsa, OK 74145
P: 800-999-5005 x 6314
F: 918-665-1177
E: elizabeth.hassell@fabricut.com

REP FIRM:

Cindy Royals
P: 770-792-7156
E: Cindy.Royals@Fabricut.com

SPEC NO: **SP-604A (C,S)**

DESCRIPTION: Fabric at Upholstered Cornice (Corridor Window Treatment)

MODEL/STYLE NO: Premiere

COLOR: Jade

CONTENT: 100% FR Polyester

DIMENSIONS: 60" W; Repeat: 0" Vertical, 30" Horizontal

Fabrication to be in accordance with IHG standards as stated in the FF&E Construction and Specification Guidelines and as follows:

NOTES:

1. Refer to image below for fabric.
2. Product to be of contract quality and suitable for commercial use.
3. Per manufacturer, fabric meets or exceeds the following requirements: NFPA 701, Class 1; 15,000 double rubs, and all ACT standards.
4. Fabricator to verify all site conditions, dimensions, materials required for installation, and confirm fabric yardages.
5. Fabric must be treated for fire retardancy or meet applicable fire codes.
6. Manufacturer to ship all excess fabric to property for attic stock.
7. No products shall infringe on any third party patents, copyrights, trademarks or other intellectual property rights.



Not for Color / Not to Scale / Design Intent Only

QUANTITY: TBD

UNIT COST: \$ TBD

TOTAL COST: \$ TBD

ISSUE DATE:
8/01/11

REVISION DATE:

REV. NO:

SPEC NO:

SP-604A (C,S)

All orders must be marked as specified by IHG. All installed fabrics, upholstery, carpet, wallcovering, and other finish materials must meet local fire codes and regulations. Manufacturer must provide flame certificate to owner/purchaser at time order is shipped. Fabricator and/or installer must confirm the exact quantities required. All substitutions must be approved by IHG prior to ordering. Manufacturers must provide maintenance instructions. All shop drawings, finish samples, artwork and/or strike-offs must be submitted to IHG, for approval prior to production.

Staybridge Suites – Standardized Room Decor
Refreshed Chocolate and Sage Schemes – Public Area

InterContinental Hotels Group

Design & Construction
Three Ravinia Drive, Suite 100
Atlanta, GA 30346

AREA: Corridor

MANUFACTURER:
P/Kaufmann Contract
Attn: Travis Dennington
P: 404-835-2610 Office
C: 214-455-3552
E: TEXTILEREPA@aol.com

REP FIRM:

SPEC NO: **SP-604B (C,S)**

DESCRIPTION: Sheer Fabric at Corridor Window Treatment

MODEL/STYLE NO: Drift

COLOR: #262 Atlantic

CONTENT: 100% Polyester

WIDTH: 120"

REPEAT: N/A

Fabrication to be in accordance with IHG standards as stated in the FF&E Construction and Specification Guidelines and as follows:

NOTES:

1. Refer to image below for sheer fabric.
2. Product to be of contract quality and suitable for commercial use.
3. Per manufacturer, fabric meets or exceeds the following requirements: Passes NFPA 701 small scale, NFPA 260.
4. Fabricator to verify all site conditions, dimensions, materials required for installation, and confirm fabric yardages.
5. Fabric must be treated for fire retardancy or meet applicable fire codes.
6. Manufacturer to ship all excess fabric to property for attic stock.
7. No products shall infringe on any third party patents, copyrights, trademarks or other intellectual property rights.



Not for Color / Not to Scale / Design Intent Only

QUANTITY: TBD

UNIT COST: \$ TBD

TOTAL COST: \$ TBD

ISSUE DATE:
8/01/11

REVISION DATE:

REV. NO:

SPEC NO:

SP-604B (C,S)

All orders must be marked as specified by IHG. All installed fabrics, upholstery, carpet, wallcovering, and other finish materials must meet local fire codes and regulations. Manufacturer must provide flame certificate to owner/purchaser at time order is shipped. Fabricator and/or installer must confirm the exact quantities required. All substitutions must be approved by IHG prior to ordering. Manufacturers must provide maintenance instructions. All shop drawings, finish samples, artwork and/or strike-offs must be submitted to IHG, for approval prior to production.