

STATIONARY ROMAN SHADE VALANCE
 -Wall Mounted Window Top Treatment:
 Operable Roman Shade to be
 Permanently Secured to 24" Length
 -Outside Mount Window Treatment to
 extend beyond window 2", all (3) sides

(OPTIONAL) SOLAR SHADE
 -Inside Mount Window Treatment

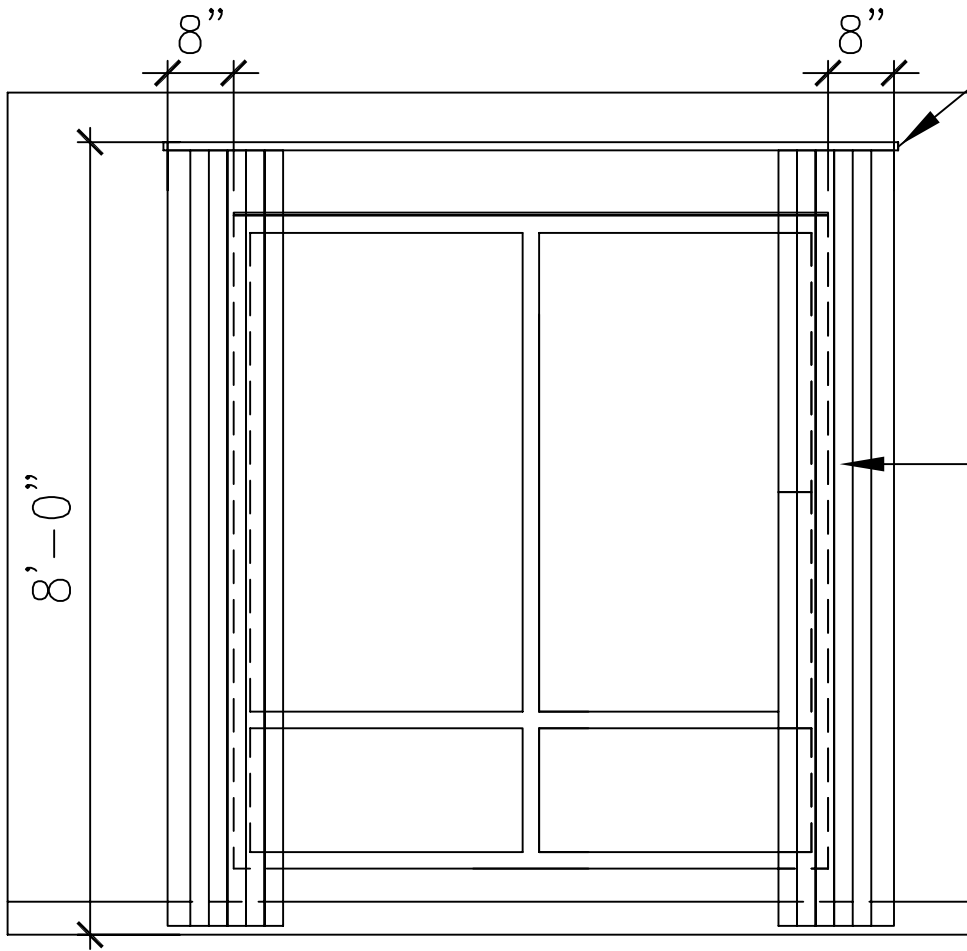
LM-101 Front Lobby



GREEN TEA STATIONARY ROMAN SHADE VALANCE

SCALE: 1/2" = 1'-0"

REV: 3-30-09



ROD:
 FOREST GROUP – VION Collection
 Tube: V808-28-116
 Wall Bracket: GEO, Single V284425-116
 End Cap: V283000-116
 Finish: Stainless Steel

- Wall Mounted at 8'-0"
- Hardware extends beyond window 8" each side

SHEER DRAPERY – #132147

- Ripple Fold 120% Fullness
- Traversing
- Dining Area: Center Draw
- Buffet Area: One Way Draw away from millwork
- Double 2" Hem
- Stripe to run horizontally

*NOTE:

Pool/Vestibule Window Treatment may require ceiling mount installation as conditions warrant (verify in field)
 For ceiling mount condition: use standard Ripplefold ceiling mount hardware

BR-101 Breakfast Room

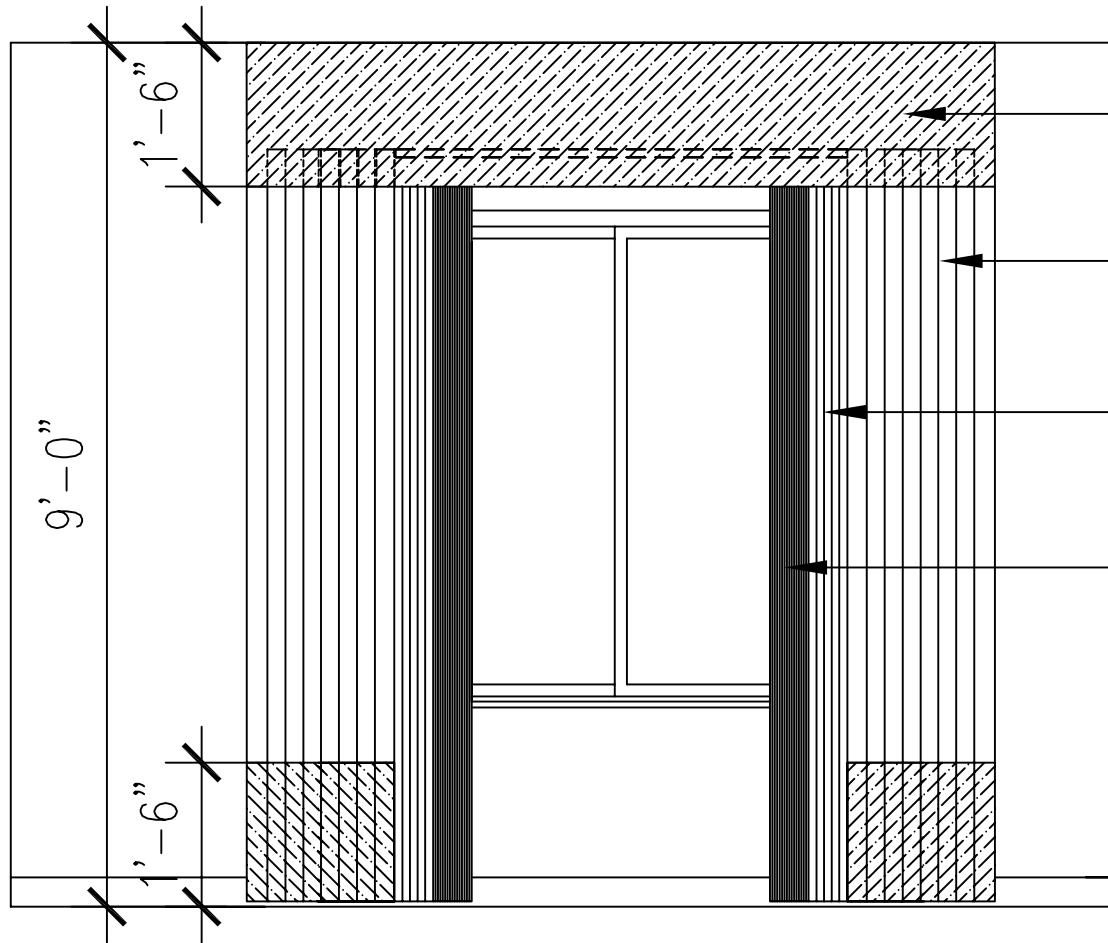
LM-100 Pool & Vestibule (Lobby/Corridor Side)*



GREEN TEA TRAVERSING SHEER DRAPERY

SCALE: 1/2" = 1'-0"

REV: 5-13-10



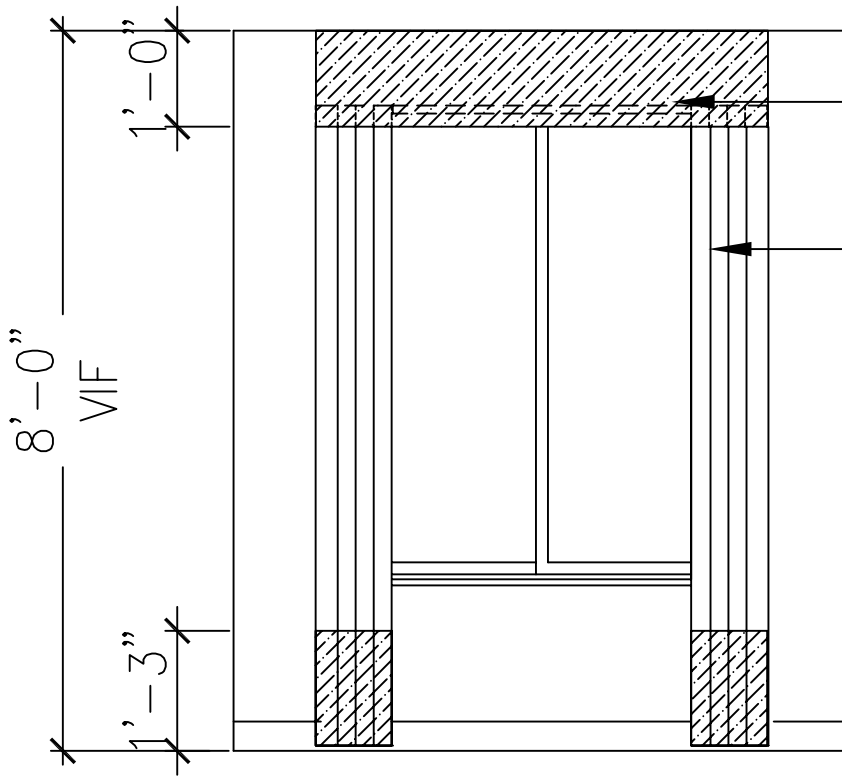
- MR-105C/MR-105L VALANCE
 - 1/2" Self Welt across top
 - 18" Center Pleats
- MR-102/MR-102L/MR-102TR SIDE PANEL
 - Double 4" Hem, 200% Fullness
 - 18" Banding across both
- MR-101 SHEER DRAPERY
 - Hanky Hem
 - 250% Fullness
- MR-109 BLACK-OUT DRAPERY LINER
 - Ceiling Mounted
 - Hardware extends beyond window 6" each side.
 - Center Open
 - Two-Way Draw Hardware



GREEN TEA MEETING ROOM DRAPERY

SCALE: 1/2" = 1'-0"

REV: 2-6-09



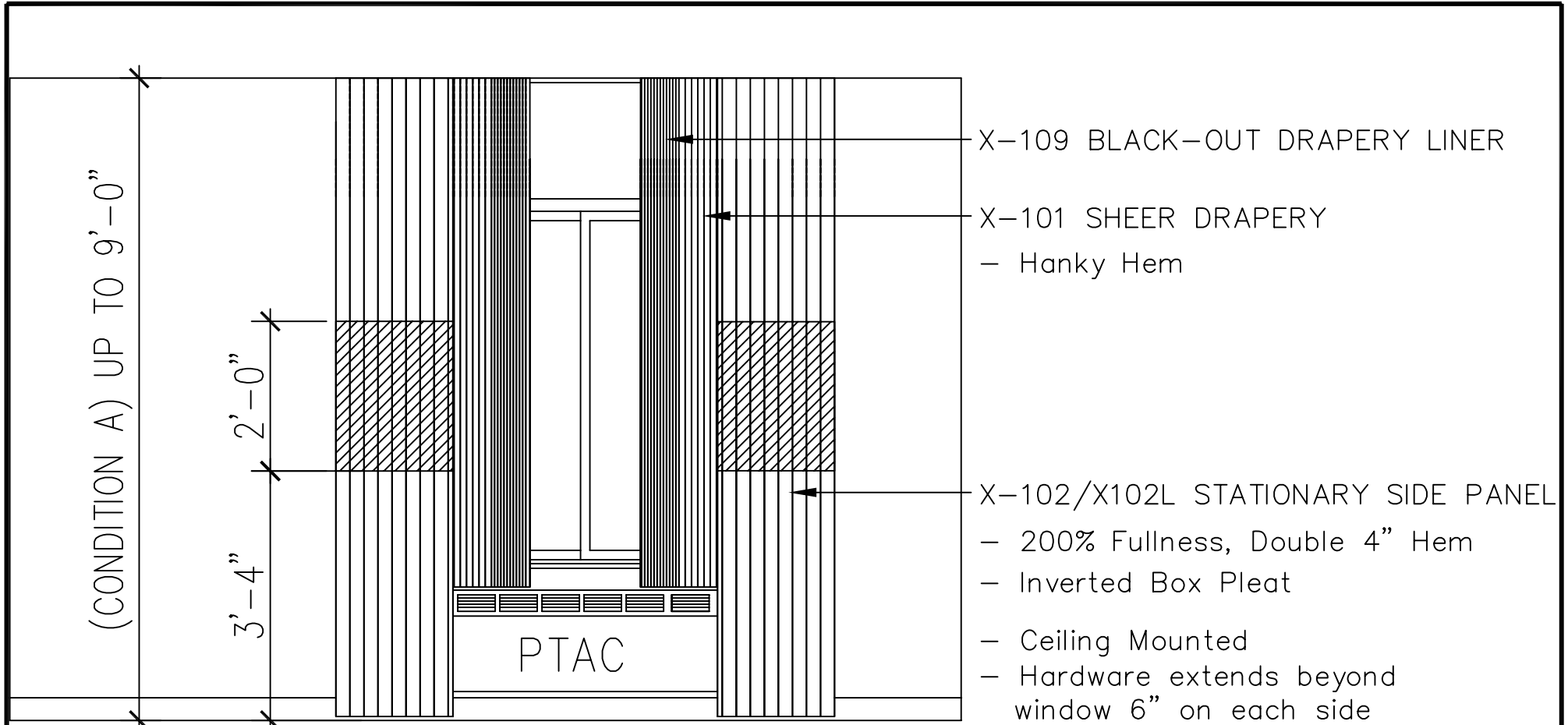
- PG-105C/PG-105L VALANCE
 - 1/2" Self Welt across top
 - Center & Corner Pleat at 12" height
- PG-101/PG-101TR SHEER DRAPERY
 - 15" Banding Across Bottom
 - Ceiling Mounted, 8'-0" Height
 - Wall Mounted, 8'-7" and above
 - Hardware extends beyond window 6" each side
 - Center Open
 - Two-Way Draw Hardware
 - Double 4" Hem



GREEN TEA CORRIDOR DRAPERY

SCALE: 1/2" = 1'-0"

REV: 2-6-09



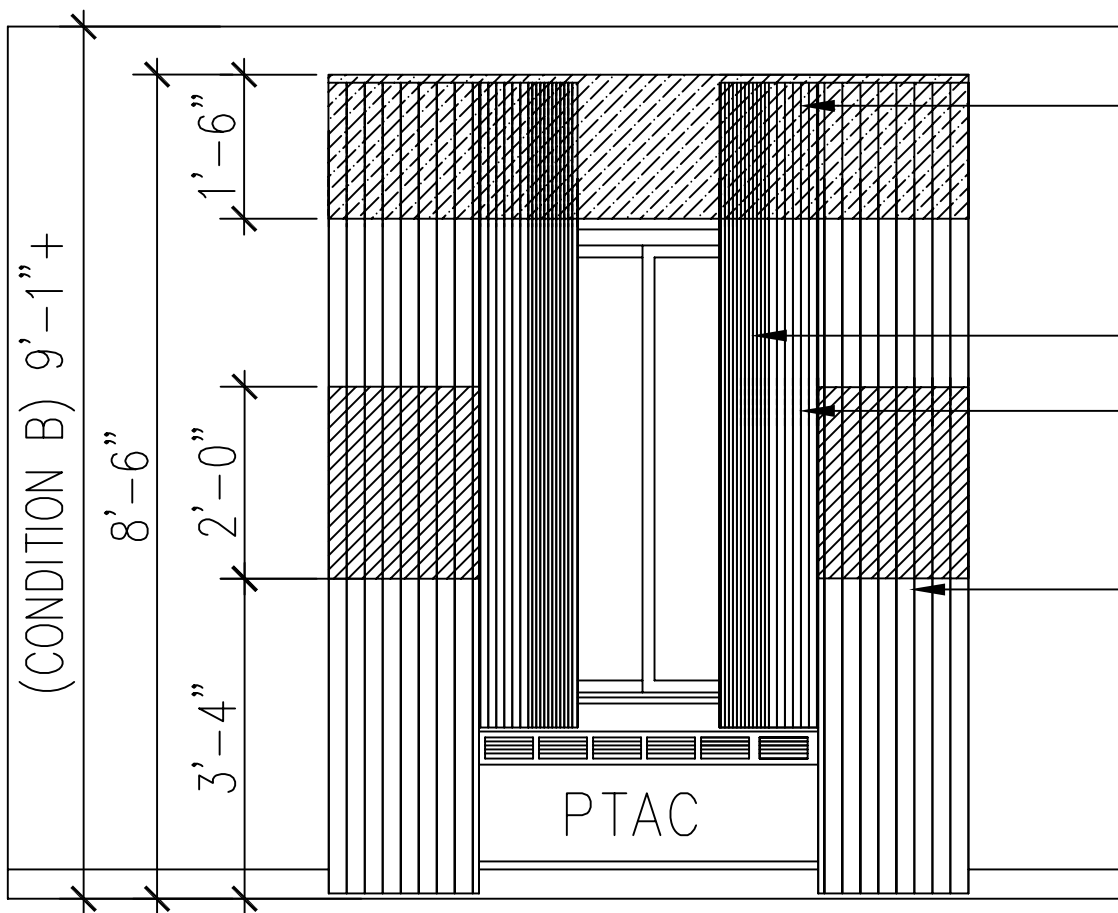
Typical Guest Room Drapery



GREEN TEA TYPICAL GUESTROOM DRAPERY

SCALE: 1/2" = 1'-0"

REV: 2-6-09



- X-105 CORNICE with 1/2" Self Welting
 - Install Cornice with Dust Cap to support 3-Track System at 8'-6" AFF. Provide adequate Angle Iron Support. Draperies installed in top of cornice.
- X-109 BLACK-OUT DRAPERY LINER
- X-101 SHEER DRAPERY
 - Hanky Hem
 - 250% Fullness
- X-102/X102L STATIONARY SIDE PANEL
 - 200% Fullness, Double 4" Hem
 - Inverted Box Pleat
 - Hardware extends beyond window 6" on each side
 - 3-Track System Installed in Dust Cap of the Cornice

Guest Room Drapery
1st Floor Only
When Ceiling is 9'-1" or greater

GREEN TEA 1ST FLOOR GUESTROOM DRAPERY



SCALE: 1/2" = 1'-0"

REV: 2-6-09

Revised 5/13/10



FAIRFIELD INN WINDOW TREATMENT **GREEN TEA DESIGN SCHEME**

FRONT LOBBY AREA

Stationary Roman Shade Valance:

- **Hunter Douglas Woven Woods with Banding**
- **Self Valance 7 ½” in height**
- **Soft Fold (3) Mock Pleat Roman Shade: each pleat to be 5.5” for a total of 24”**
- **Install Outside Mount**
- **Wall Mounted 2” beyond window on all (3) sides**
- **Meets NFPA 701**

Vendor: Hunter Douglas

Pattern: Special Fairfield

Color: Giraffe – B

- **Banding to frame Woven Woods sides and bottom**
- **Banding pattern/color: Nutmeg #801**
- **Banding finished size: 1 ½” wide sides and across bottom**

To order this Woven Wood product, developed for Marriott, please contact the Hospitality Division of Hunter Douglas’s Chicago Office.

Hunter Douglas contacts for all orders with special Marriott pricing:

- **David Haseley** david.haseley@hdhospitality.com
1-800-229-5300 ext 105 or 773-634-5105
- **Karolyn Kirsch** kk@hdhospitality.com
1-800-229-5300 or 773-634-5142

Optional Solar Shade:

To be used in conjunction with Stationary Roman Shade Valance

Vendor: Hunter Douglas Hospitality

Pattern: New Orleans

Color: 2627 Chickory

- **Heat Sealed Fabric Wrapped Hem Bar**
- **Install INSIDE Mount**
- **Meets NFPA 701**
- **Lead Time: 2-4 Weeks**

BREAKFAST AREA

Traversing Sheer:

- **120% Fullness**
- **Wall Mount – Ripplefold Hardware**
- **Dining Area: Center Draw**
- **Buffet Area: One Way Draw - away from millwork**
- **Baton Drawn**
- **Double 2” Hem**
- **Stripe to run horizontally -Stripe runs selvage to selvage, application will be up the roll – cut by the width**

Vendor: Valley Forge Textiles

Pattern: Hughes Stripe (118)

Color: 504DM (Stripe runs selvage to selvage)

Material ID#: 132147

Hardware:

Forest Group – VION Collection

- **End Cap:** Part number V283000-116 Stainless Steel Finish
- **H/Rail Tube:** Part number V808-28-116 Stainless Steel Finish
- **Wall Bracket Geo, single:** Part number V284425-116 Stainless Steel Finish

Site Conditions with an attached Side Window at the Exit Door:
Side Window and Door do not require treatment.

POOL

Renovations & New Builds with an Indoor Pool:

Properties with one or several windows overlooking the pool:

- **Window(s) located in the lobby to be treated with Breakfast Room Traversing Sheer and Forest Group Vion Collection Hardware. Refer to Breakfast Area for complete drapery and hardware specifications.**
- **Windows across from Laundry Area should not be treated.**
- **Corridor Pool Windows not in view of the Lobby or Breakfast Room to use Marriott standard Ripplefold Ceiling Mount Hardware**

Sheer Drapery Side Panels:

- **Ceiling Mounted**
- **250% fullness**
- **Double 2” Hem**
- **Stripe to run horizontally**

Vendor: Valley Forge Textiles

Pattern: Hughes Stripe (118)

Color: 504DM (Stripe runs selvage to selvage)

Material ID#: 132147

MEETING ROOM

Drapery Side Panels:

- **200% fullness**
- **Ceiling mounted**
- **Banding across bottom**

Vendor: P. Kaufmann

Pattern: St. Mark's Piazza (54)

Color: 812 Spice = Up the Roll

Material ID#: 130415

Banding for Drapery Side Panels:

- **18" Banding Across Bottom of Side Panels**

Vendor: Kravet

Pattern: 26687 (59)

Color: 1112 = Up the roll

Material ID#: 130385

Lining for Drapery Side Panels:

Vendor: Rockland Mills

Pattern: Lining Sheeting (54)

Color: Ivory

Material ID#: 665

Traversing Sheer:

- **250% Fullness**
- **Hanky Hem**

Vendor: P. Kaufmann

Pattern: Beeza (118)

Color: Gold 101 = Railroad

Material ID#: 130358

Traversing Blackout Liner:

- **200% Fullness**
- **1/2" Clean finish Hem**

Vendor: Rockland Mills

Pattern: 3 Pass Blackout (54)

Color: Ivory/Ecru

Material ID#: 76363

Soft Valance:

- **18" Height with 1/2" Self Welt Across Top**
- **Center Pleat and Corner Pleats to be 18" in height**

Vendor: Kravet

Pattern: 26687 (59)

Color: 1112 = Up the Roll

Material ID#: 130385

Valance Lining:

Vendor: Rockland Mills

Pattern: 3 Pass Blackout (54)

Color: Ivory/Ecru

Material ID#: 76363

CORRIDORS

Drapery Sheer:

- **250% fullness**
- **Floors 2-4: Ceiling Mount, Standard Pleating**
- **Center Opening**
- **Double 4" Hem**

Vendor: P. Kaufmann

Pattern: Beeza (118)

Color: Gold 101 = Railroad

Material ID#: 130358

Bottom Accent Band:

- **15" High Across Bottom of Sheer**

Vendor: P. Kaufmann

Pattern: St. Mark's Piazza (54)

Color: 216 Wheat = Up the Roll

Material ID#: 130359

Soft Valance:

- **12" Height with 1/2" Self Welt Across Top**
- **Center Pleat and Corner Pleats to be 12" in height**

Vendor: P. Kaufmann

Pattern: St. Mark's Piazza (54)

Color: 216 Wheat = Up the Roll

Material ID#: 130359

Valance Lining:

Vendor: Rockland Mills

Pattern: 3 Pass Blackout (54)

Color: Ivory/Ecru

Material ID#: 76363

GUESTROOM APPLICATION

(Condition A) Ceiling Height - 9'0" or less:

- **Draperies to be Ceiling Mounted**
- **No Cornice is used**

(Condition B) Ceiling Height - 9'1" or greater:

- **Install wall mounted Cornice at 8'6" with an appropriate Dust Cap to support 3-Track System**
- **Provide adequate Angle Iron support**
- **Draperies installed in top of Cornice**

Hardware:

3 Track System for all Ceiling Heights:

- **Stationary Side Panels**
- **Traversing Blackout Liner**
- **Traversing Sheer**

Hardware to extend 6" beyond window on each side.

Mounting height to be 8'6" for ceiling mount installation (or) installation in Dust Cap of Cornice.

GUESTROOM SPECIFICATION

Stationary Side Panels:

- **200% Fullness**
- **Inverted Box Pleat - Pleats to be tacked down with matching thread**
- **Standard Double 4" Hem with Lining**
- **Side Panel stripe to run horizontally**

Vendor: P. Kaufmann

Pattern: Napa Stripe (118)

Color: Green/Cream = Railroaded

Material ID#: 130355

Lining for Stationary Side Panels:

Vendor: Rockland Mills

Pattern: Lining Sheeting (54)

Color: Ivory

Material ID#: 665

Sheer:

- **250% Fullness**
- **Standard 3 Finger Pleat Hanky Hem**
- **Up the Roll**

Vendor: Northeast Textiles

Pattern: F-77000 CBE1 (118")

Color: Serenity Voile Beige

Material ID#: 140570

Blackout Liner:

- **200% Fullness**
- **Standard Pleating**
- **1/2" Clean Finish Hem**

Vendor: Rockland Mills

Pattern: 3 Pass Blackout (54)

Color: Ivory/Ecru

Material ID#: 76363

Guestroom Cornice:

- **18" high Cornice with 1/2" welting**
- **Cornice to be wall mounted**
- **Cornice used only in (Condition B) with an appropriate Dust Cap - 12" deep - to support a 3-Track System**
- **Provide adequate Angle Iron support.**

Cornice:

Vendor: P. Kaufmann

Pattern: Napa Solid – 126" Wide

Color: Cream

Material ID#: 200558

Cornice Lining:

Vendor: Rockland Mills

Pattern: 3 Pass Blackout (54)

Color: Ivory/Ecru

Material ID#: 76363

EXERCISE ROOM

Solar Shade:

Vendor: Hunter Douglas Hospitality

Shade Pattern: New Orleans

Shade Color: Magnolia

Fascia Color: Brushed Aluminum

- **Heat Sealed Fabric Wrapped Hem Bar**
- **Install INSIDE Mount**
- **Meets NFPA 701**
- **Lead Time: 2-4 Weeks**

OFFICE, STAIRWELLS (Upper Floors Only) & BACK OF HOUSE

Solar Shade:

Vendor: Hunter Douglas Hospitality

Shade Pattern: New Orleans

Shade Color: Magnolia

Fascia Color: Vanilla

- **Heat Sealed Fabric Wrapped Hem Bar**
- **Install INSIDE Mount**
- **Meets NFPA 701**
- **Lead Time: 2-4 Weeks**