

1. ALL INSTALLATIONS ARE TO OCCUR AFTER ALL PAINTING AND FINISH WORK IS COMPLETED AND AMBIENT TEMPERATURE AND HUMIDITY CONDITIONS ARE MAINTAINED TO INTENDED LEVEL.
2. INSTALLER REQUIRED TO V.I.F. (VERIFY IN FIELD) ALL REQUIRED MEASUREMENTS AND SIRE CONDITIONS AND ADJUST DRAPERY ACCORDINGLY.



SHEER LM-100  
 MATERIAL ID#200917  
 FABRIC BY PROCUREMENT  
 FABRICATION AND INSTALLATION  
 BY OTHER



# LOBBY ELEVATION

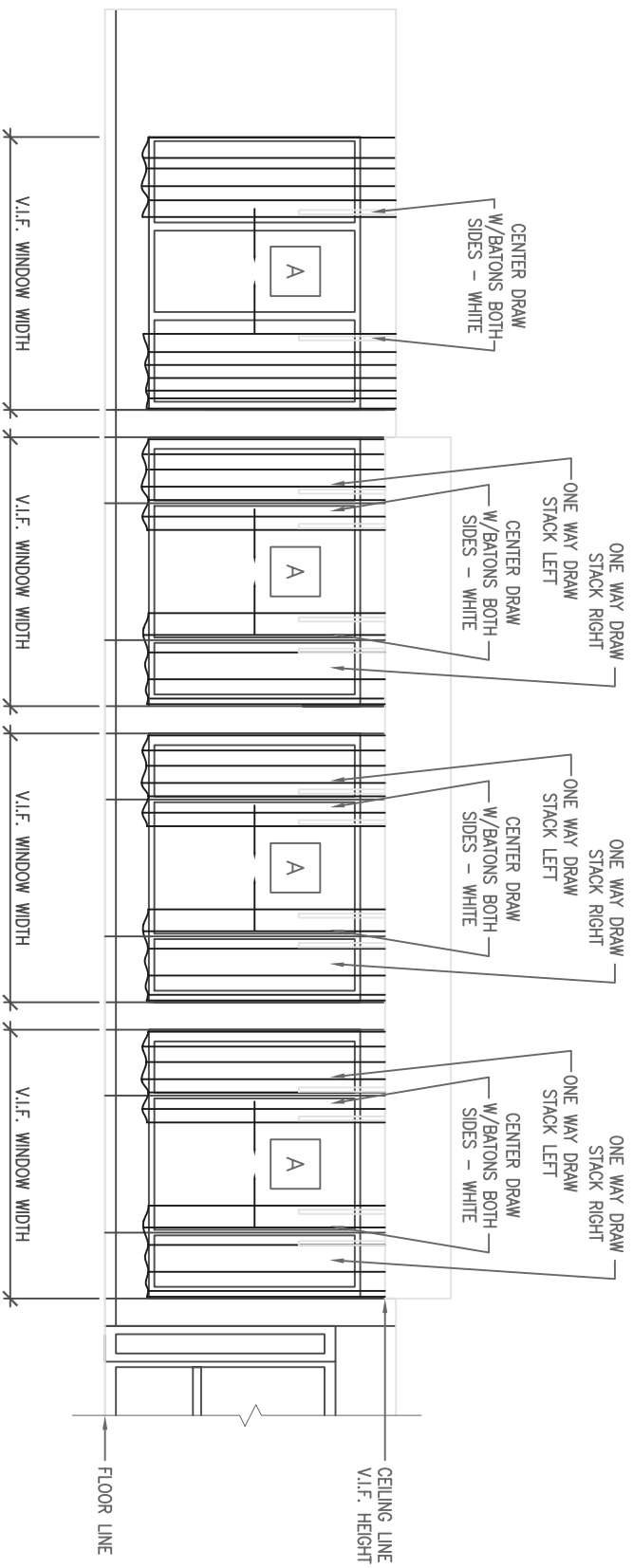
SCALE: NTS



## GEN 1 TRANSFORMATIONS LOUNGE DRAPERY ELEVATION

SCALE: NTS (NOT TO SCALE)

DATE ISSUED: 08/07/09



1. ALL INSTALLATIONS ARE TO OCCUR AFTER ALL PAINTING AND FINISH WORK IS COMPLETED AND AMBIENT TEMPERATURE AND HUMIDITY CONDITIONS ARE MAINTAINED TO INTENDED LEVEL.
2. INSTALLER REQUIRED TO V.I.F. (VERIFY IN FIELD) ALL REQUIRED MEASUREMENTS AND SIRE CONDITIONS AND ADJUST DRAPERY ACCORDINGLY.

A  
 SHEER LM-100  
 MATERIAL ID#200917  
 FABRIC BY PROCUREMENT  
 FABRICATION AND INSTALLATION  
 BY OTHER



**LOBBY ELEVATION**  
 SCALE: NTS



GEN 1 TRANSFORMATIONS LOUNGE DRAPERY ELEVATION

SCALE: NTS (NOT TO SCALE)

DATE ISSUED: 08/07/09

FABRIC DESCRIPTION: SHEER FABRIC BY VALLEY FORGE TEXTILES, PATTERN: CITRUS SHEER II, #616-DMM, MARRIOTT MATERIAL ID #200917, 118" WIDTH, 100% POLYESTER, FABRIC IS DIRECTIONAL. RAILROAD WHENEVER POSSIBLE, THOUGH ENTIRE PUBLIC SPACE MUST BE UNIFORM IN DIRECTION.

\*A\* - FABRICATION DESCRIPTION OF SHEERS ONLY:

- RIPPLEFOLD
- EUROPEAN HEM WITH STRING WEIGHT
- COND-OPERATED TRAVERSE RODS ARE NOT PREFERRED
- 3" HIGH DRAPERY POCKET IN CEILING WHERE POSSIBLE TO CONCEAL HARDWARE AND TOP HEM (NEW CONSTRUCTION)
- HARDWARE IS FOREST GROUP USA #CM-512 OR EQUAL, MOUNTED TIGHT TO CEILING. WALL BRACKETS ARE NOT ACCEPTABLE.
- DRAPERY SHALL RUN FLOOR-TO-CEILING WHENEVER POSSIBLE, AND CREATE ONE CONSISTANT HORIZONTAL LINE.
- DRAPERY BEHIND MEDIA PODS, WHERE CLEARANCES MAY BE TIGHT, MAY STOP AT RAISED SILL TO SAVE SPACE.
- CENTER DRAW TYPICAL. SMALLER WINDOWS MAY HAVE SIDE DRAW TO REDUCE PANELS AND BATONS. DRAPERY SHALL DRAW AND FRAME THE VIEW BEYOND, NOT CLUTTER THE VIEW BEYOND. WIDE EXPANSES OF GLASS MAY REQUIRE INTERMEDIATE PAIRS OF DRAPERY.

- CEILING HEIGHT UP TO 11'-0" AFF
- 100% FULLNESS
- FULLY-OPERABLE
- WHITE BATONS TO A 6'-0" MAXIMUM LENGTH
- MAXIMUM HEIGHT TO THE BOTTOM OF A BATON IS 5'-0" AFF
- MAXIMUM HEIGHT OF MANUALLY-OPERATED SHEERS IS 11'-0"

CEILING HEIGHTS OF MORE THAN 11'-0" AFF (FABRIC CANNOT BE RAILROADED)

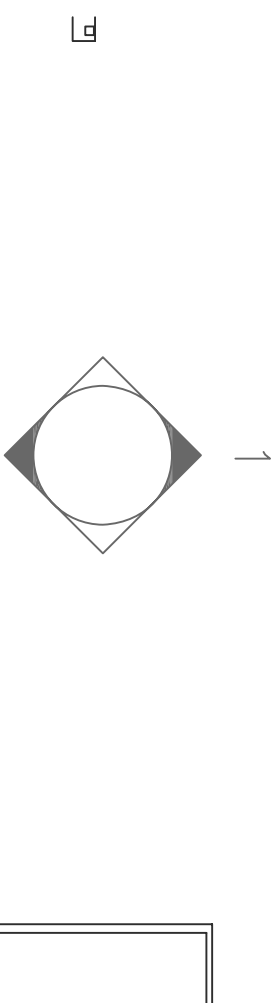
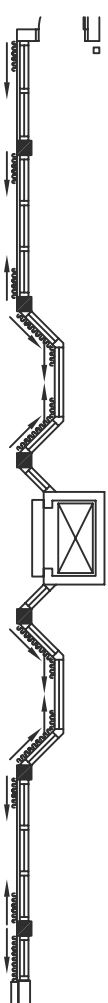
- STATIONARY SIDE HANGINGS
- 150% FULLNESS
- HARDWARE INSTALLED ONLY WHERE DRAPERY HANGS. RODS DO NOT NEED TO BE CONTINUOUS ACROSS ENTIRE LENGTH OF WINDOW. IF CONTINUOUS RODS ARE USED, MECHANICAL STOPS SHALL BE INSTALLED TO LIMIT DRAPERY TRAVERSE.
- TO FRAME THE VIEWS BEYOND, SIDE HANGINGS SHALL PROJECT BOTH INTO WINDOW FRAME TO COVER THE EDGE OF GLASS, AND BEYOND WINDOW FRAME TO COVER A PORTION OF THE ADJACENT WALL AREA. PROJECTIONS EACH SIDE SHOULD BE PROPORTIONAL TO SPAN THE SPAN OF GLASS, AND WALL AREA ON EACH SIDE.
- ADDITIONAL LIGHT CONTROL, IF REQUIRED, SHALL BE ACHIEVED ON A PROPERTY-BY-PROPERTY BASIS USING TINTED WINDOW FILM.

1. ALL INSTALLATIONS ARE TO OCCUR AFTER ALL PAINTING AND FINISH WORK IS COMPLETED AND AMBIENT TEMPERATURE AND HUMIDITY CONDITIONS ARE MAINTAINED TO INTENDED LEVEL.

2. INSTALLER REQUIRED TO V.I.F. (VERIFY IN FIELD) ALL REQUIRED MEASUREMENTS AND SIRE CONDITIONS AND ADJUST DRAPERY ACCORDINGLY.



SHEER LM-100  
MATERIAL ID#200917  
FABRIC BY PROCUREMENT  
BY OTHER



2



KEY PLAN  
SCALE: N.T.S.



GEN 1 TRANSFORMATIONS LOUNGE DRAPERY PLAN

SCALE: NTS (NOT TO SCALE)

DATE ISSUED: 08/07/09

A

SHEER MR-100  
MATERIAL ID#200917  
FABRIC BY PROCUREMENT  
FABRICATION AND INSTALLATION  
BY OTHER

B

BLACK-OUT LINING MR-101  
MATERIAL ID#204868  
FABRIC BY PROCUREMENT  
FABRICATION AND INSTALLATION  
BY OTHER

**MEETING ROOM & PUBLIC BOARD ROOM - SHEERS WITH BLACKOUT LINING**

*Sheer Fabrication Details:*

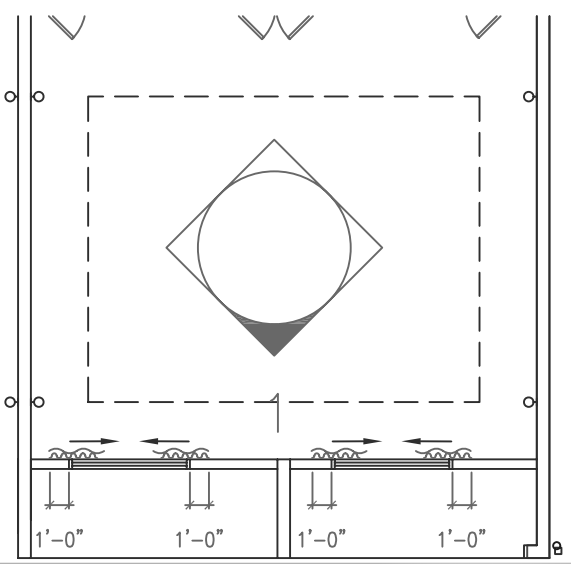
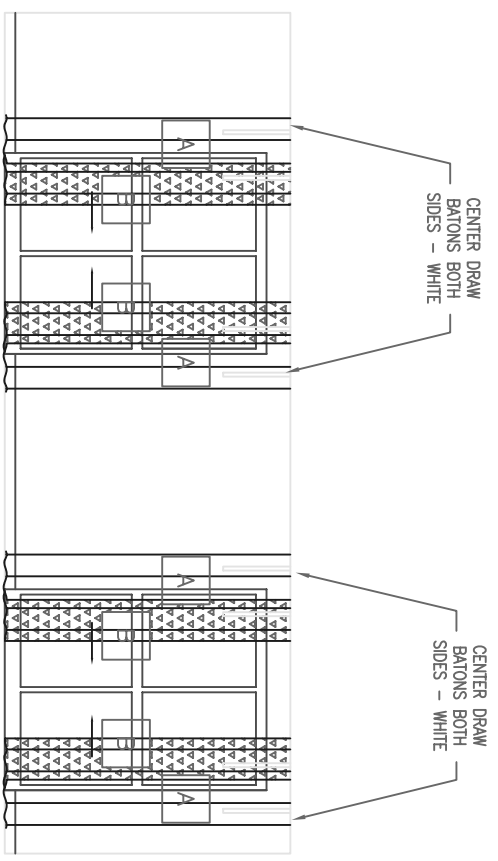
- Ripplefold @ 100% fullness
- Hanky hem with string weight
- Drapery shall run floor-to-ceiling where ever possible, and create one consistent horizontal line.
- 3" high drapery pocket in ceiling where possible to conceal hardware and top hem (New Construction)
- Fully-operable
- Cord-operated traverse rods are not preferred
- Hardware to be mounted tight to ceiling. Wall Brackets are not acceptable.
- White batons to a 6'-0" maximum length
- Maximum height to the bottom of a baton is 5'-0" AFF
- Maximum height of manually-operated sheers is 11'-0"
- Blackout drapery hung behind sheers. No over drapery.
- Remove any valance or cornice and do not replace

*Blackout Fabrication Details:*

- Ripplefold @ 100% fullness
- Existing hardware can be reused with pinch-pleat drapery @ 200% Fullness (Renovation only)
- 1/2" double-fold, clean finish hem
- A plastic covered 1"x1" weight secured in the each corner.
- French seams at panel seams

*Meeting Room and Public Board Room fire egress doors and associated exit signage shall not, nor have the potential to be covered by drapery. If light control is required, the use of a blackout film applied to the glass portion of a door and side light is preferred, and achieved on a property-by-property basis. The film shall coordinate with the décor of the room, and color of the adjacent door frame.*

1. ALL INSTALLATIONS ARE TO OCCUR AFTER ALL PAINTING AND FINISH WORK IS COMPLETED AND AMBIENT TEMPERATURE AND HUMIDITY CONDITIONS ARE MAINTAINED TO INTENDED LEVEL.
2. INSTALLER REQUIRED TO V.I.F. (VERIFY IN FIELD) ALL REQUIRED MEASUREMENTS AND SIRE CONDITIONS AND ADJUST DRAPERY ACCORDINGLY.



**LOBBY ELEVATION & PLAN**

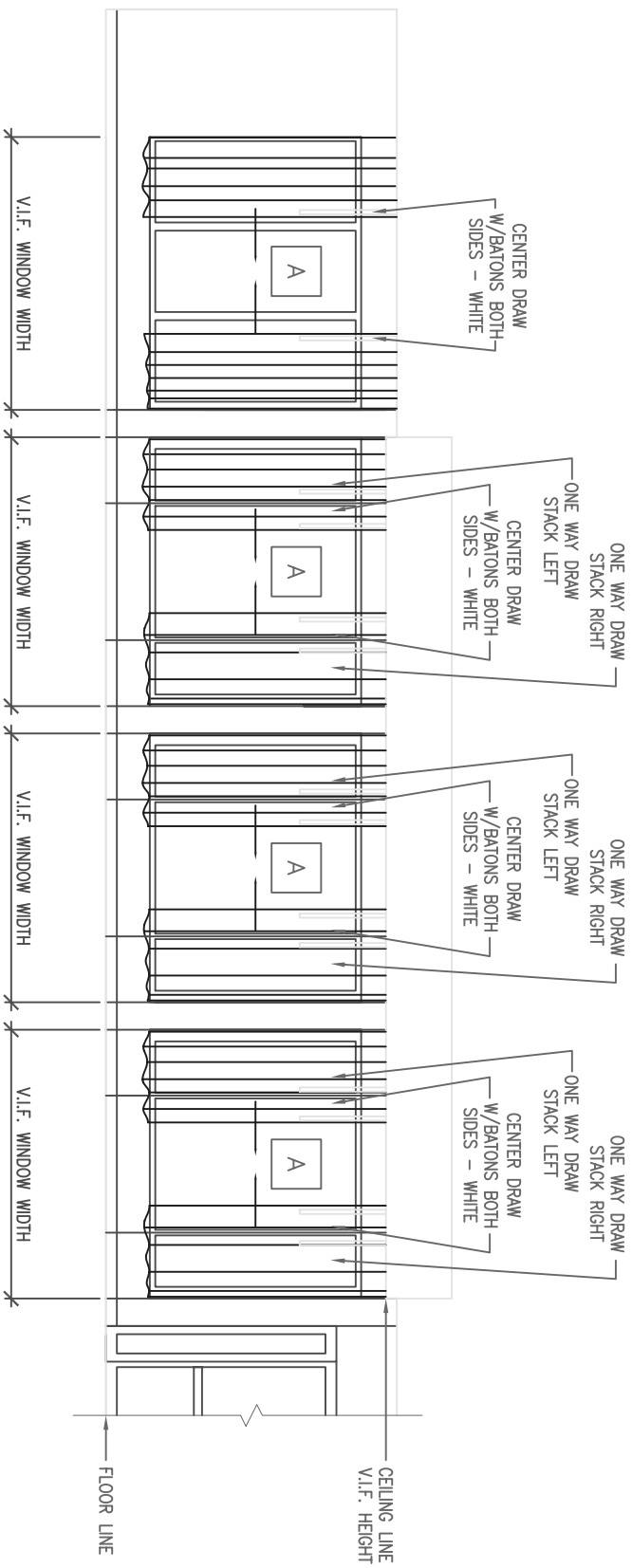
SCALE: NTS



**GEN 1 TRANSFORMATIONS MEETING ROOM DRAPERY**

SCALE: NTS (NOT TO SCALE)

DATE ISSUED: 08/07/09



1. ALL INSTALLATIONS ARE TO OCCUR AFTER ALL PAINTING AND FINISH WORK IS COMPLETED AND AMBIENT TEMPERATURE AND HUMIDITY CONDITIONS ARE MAINTAINED TO INTENDED LEVEL.
2. INSTALLER REQUIRED TO V.I.F. (VERIFY IN FIELD) ALL REQUIRED MEASUREMENTS AND SIRE CONDITIONS AND ADJUST DRAPERY ACCORDINGLY.

A  
 SHEER LM-100  
 MATERIAL ID#200917  
 FABRIC BY PROCUREMENT  
 FABRICATION AND INSTALLATION  
 BY OTHER



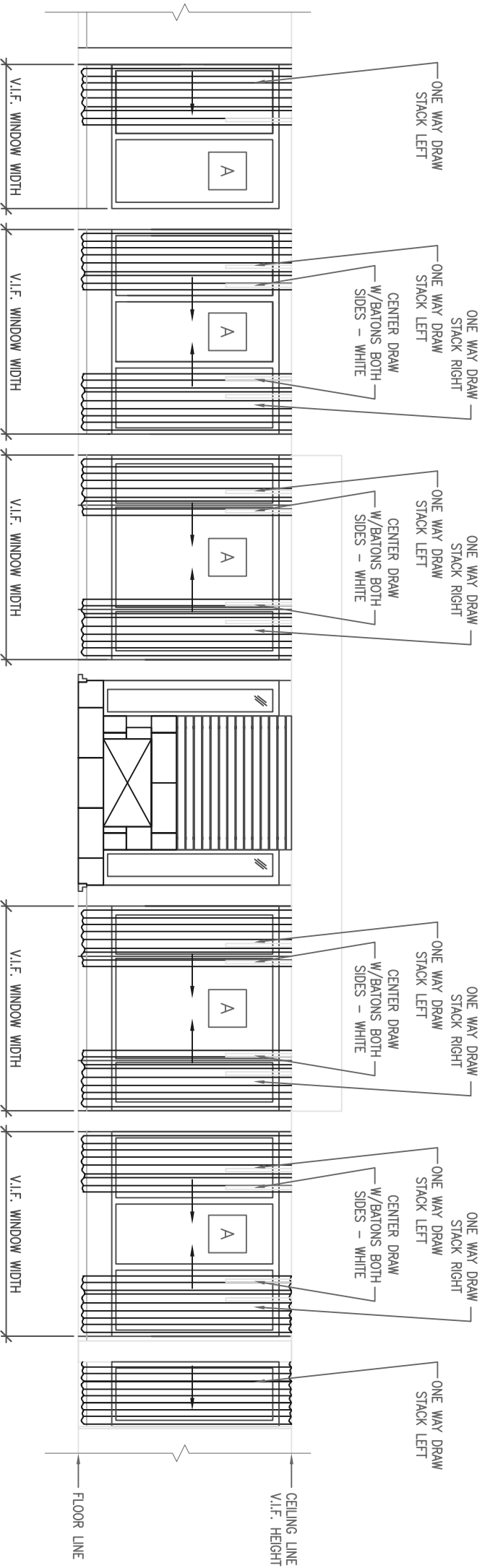
**LOBBY ELEVATION**  
 SCALE: NTS



GEN 2 TRANSFORMATIONS LOUNGE DRAPERY ELEVATION

SCALE: NTS (NOT TO SCALE)

DATE ISSUED: 08/07/09



1. ALL INSTALLATIONS ARE TO OCCUR AFTER ALL PAINTING AND FINISH WORK IS COMPLETED AND AMBIENT TEMPERATURE AND HUMIDITY CONDITIONS ARE MAINTAINED TO INTENDED LEVEL.
2. INSTALLER REQUIRED TO V.I.F. (VERIFY IN FIELD) ALL REQUIRED MEASUREMENTS AND SIRE CONDITIONS AND ADJUST DRAPERY ACCORDINGLY.



SHEER LM-100  
 MATERIAL ID#200917  
 FABRIC BY PROCUREMENT  
 FABRICATION AND INSTALLATION  
 BY OTHER



**LOBBY ELEVATION**

SCALE: NTS

**GEN 2 TRANSFORMATIONS LOUNGE DRAPERY ELEVATION**

SCALE: NTS (NOT TO SCALE)

DATE ISSUED: 08/07/09



FABRIC DESCRIPTION: SHEER FABRIC BY VALLEY FORGE TEXTILES, PATTERN: CITRUS SHEER II, #616-DMM, MARRIOTT MATERIAL ID #200917, 118" WIDTH, 100% POLYESTER, FABRIC IS DIRECTIONAL. RAILROAD WHENEVER POSSIBLE, THOUGH ENTIRE PUBLIC SPACE MUST BE UNIFORM IN DIRECTION.

\*A\* - FABRICATION DESCRIPTION OF SHEERS ONLY:

- RIPPLEFOLD
- EUROPEAN HEM WITH STRING WEIGHT
- COND-OPERATED TRAVERSE RODS ARE NOT PREFERRED
- 3" HIGH DRAPERY POCKET IN CEILING WHERE POSSIBLE TO CONCEAL HARDWARE AND TOP HEM (NEW CONSTRUCTION)
- HARDWARE IS FOREST GROUP USA #CM-512 OR EQUAL, MOUNTED TIGHT TO CEILING. WALL BRACKETS ARE NOT ACCEPTABLE.
- DRAPERY SHALL RUN FLOOR-TO-CEILING WHENEVER POSSIBLE, AND CREATE ONE CONSISTANT HORIZONTAL LINE.
- DRAPERY BEHIND MEDIA PODS, WHERE CLEARANCES MAY BE TIGHT, MAY STOP AT RAISED SILL TO SAVE SPACE.
- CENTER DRAW TYPICAL. SMALLER WINDOWS MAY HAVE SIDE DRAW TO REDUCE PANELS AND BATONS. DRAPERY SHALL DRAW AND FRAME THE VIEW BEYOND, NOT CLUTTER THE VIEW BEYOND. WIDE EXPANSES OF GLASS MAY REQUIRE INTERMEDIATE PAIRS OF DRAPERY.

- CEILING HEIGHT UP TO 11'-0" AFF
- 100% FULLNESS
- FULLY-OPERABLE
- WHITE BATONS TO A 6'-0" MAXIMUM LENGTH
- MAXIMUM HEIGHT TO THE BOTTOM OF A BATON IS 5'-0" AFF
- MAXIMUM HEIGHT OF MANUALLY-OPERATED SHEERS IS 11'-0"

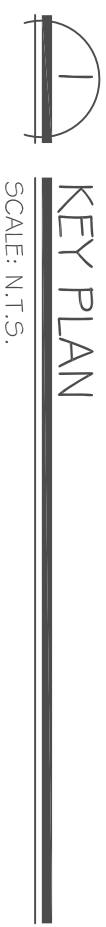
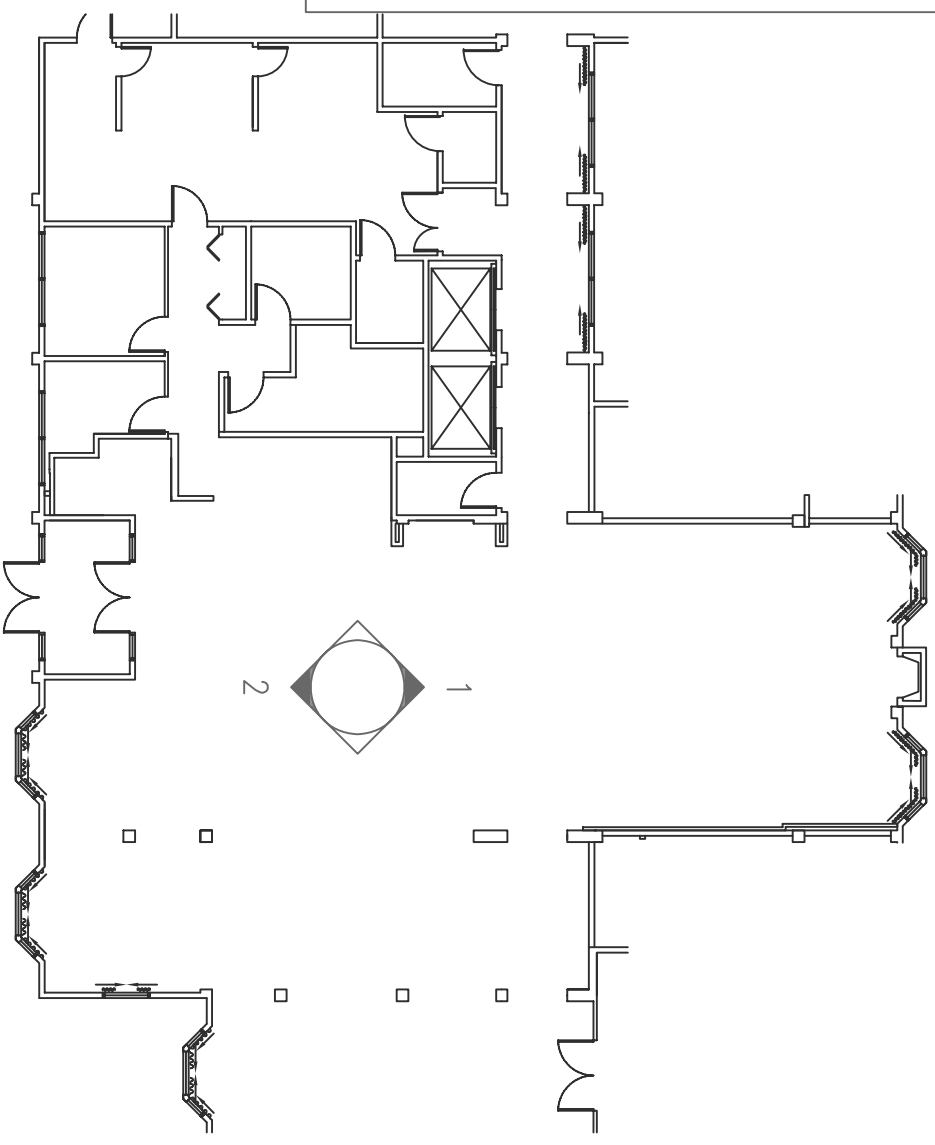
CEILING HEIGHTS OF MORE THAN 11'-0" AFF (FABRIC CANNOT BE RAILROADED)

- STATIONARY SIDE HANGINGS
- 150% FULLNESS
- HARDWARE INSTALLED ONLY WHERE DRAPERY HANGS. RODS DO NOT NEED TO BE CONTINUOUS ACROSS ENTIRE LENGTH OF WINDOW. IF CONTINUOUS RODS ARE USED, MECHANICAL STOPS SHALL BE INSTALLED TO LIMIT DRAPERY TRAVERSE.
- TO FRAME THE VIEWS BEYOND, SIDE HANGINGS SHALL PROJECT BOTH INTO WINDOW FRAME TO COVER THE EDGE OF GLASS, AND BEYOND WINDOW FRAME TO COVER A PORTION OF THE ADJACENT WALL AREA. PROJECTIONS EACH SIDE SHOULD BE PROPORTIONAL TO SPAN THE SPAN OF GLASS, AND WALL AREA ON EACH SIDE.
- ADDITIONAL LIGHT CONTROL, IF REQUIRED, SHALL BE ACHIEVED ON A PROPERTY-BY-PROPERTY BASIS USING TINTED WINDOW FILM.

1. ALL INSTALLATIONS ARE TO OCCUR AFTER ALL PAINTING AND FINISH WORK IS COMPLETED AND AMBIENT TEMPERATURE AND HUMIDITY CONDITIONS ARE MAINTAINED TO INTENDED LEVEL.
2. INSTALLER REQUIRED TO V.I.F. (VERIFY IN FIELD) ALL REQUIRED MEASUREMENTS AND SIRE CONDITIONS AND ADJUST DRAPERY ACCORDINGLY.



SHEER LM-100  
MATERIAL ID#200917  
FABRIC BY PROCUREMENT  
FABRICATION AND INSTALLATION  
BY OTHER



GEN 2 TRANSFORMATIONS LOUNGE DRAPERY PLAN

SCALE: NTS (NOT TO SCALE)

DATE ISSUED: 08/07/09

A

SHEER MR-100  
MATERIAL ID#200917  
FABRIC BY PROCUREMENT  
FABRICATION AND INSTALLATION  
BY OTHER

B

BLACK-OUT LINING MR-101  
MATERIAL ID#204868  
FABRIC BY PROCUREMENT  
FABRICATION AND INSTALLATION  
BY OTHER

**MEETING ROOM & PUBLIC BOARD ROOM - SHEERS WITH BLACKOUT LINING**

*Sheer Fabrication Details:*

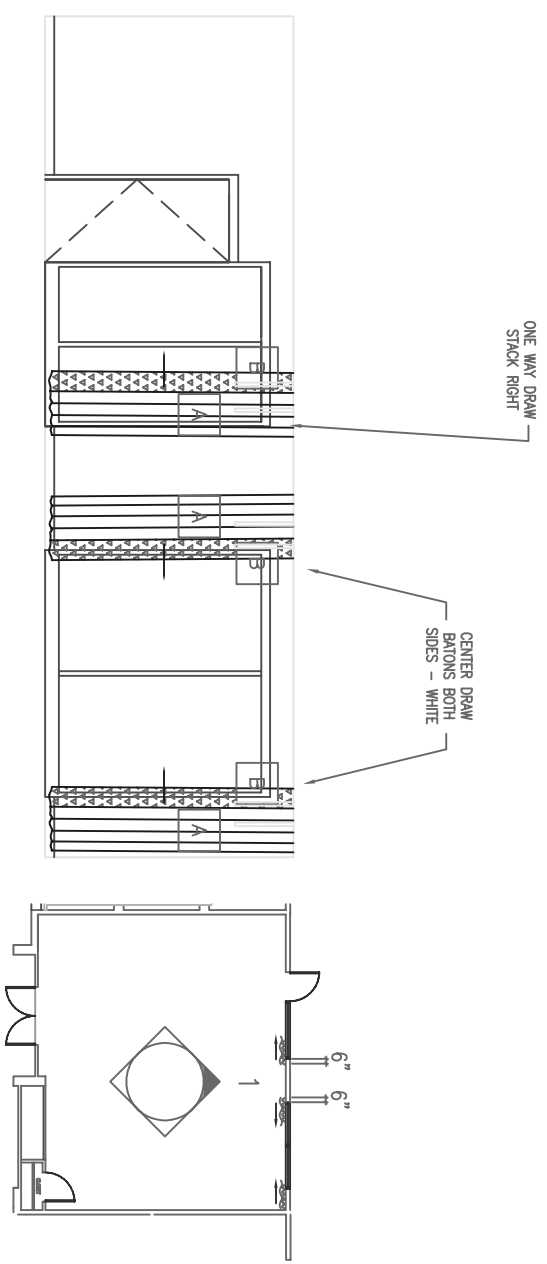
- Ripplefold @ 100% fullness
- Handy hem with string weight
- Drapery shall run floor-to-ceiling where ever possible, and create one consistent horizontal line.
- 3" high drapery pocket in ceiling where possible to conceal hardware and top hem (New Construction)
- Fully-operable
- Cord-operated traverse rods are not preferred
- Hardware to be mounted tight to ceiling. Wall Brackets are not acceptable.
- White batons to a 6'-0" maximum length
- Maximum height to the bottom of a baton is 5'-0" AFF
- Maximum height of manually-operated sheers is 11'-0"
- Blackout drapery hung behind sheers. No over drapery.
- Remove any valance or cornice and do not replace

*Blackout Fabrication Details:*

- Ripplefold @ 100% fullness
- Existing hardware can be reused with pinch-pleat drapery @ 200% Fullness (Renovation only)
- 1/2" double-fold, clean finish hem
- A plastic covered 1"x1" weight secured in the each corner.
- French seams at panel seams

*Meeting Room and Public Board Room fire egress doors and associated exit signage shall not, nor have the potential to be covered by drapery. If light control is required, the use of a blackout film applied to the glass portion of a door and side light is preferred, and achieved on a property-by-property basis. The film shall coordinate with the décor of the room, and color of the adjacent door frame.*

1. ALL INSTALLATIONS ARE TO OCCUR AFTER ALL PAINTING AND FINISH WORK IS COMPLETED AND AMBIENT TEMPERATURE AND HUMIDITY CONDITIONS ARE MAINTAINED TO INTENDED LEVEL.
2. INSTALLER REQUIRED TO V.I.F. (VERIFY IN FIELD) ALL REQUIRED MEASUREMENTS AND SIRE CONDITIONS AND ADJUST DRAPERY ACCORDINGLY.



**LOBBY ELEVATION & PLAN**

SCALE: NTS



**GEN 2 TRANSFORMATIONS MEETING ROOM DRAPERY**

SCALE: NTS (NOT TO SCALE)

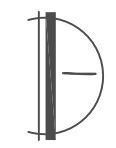
DATE ISSUED: 08/07/09



1. ALL INSTALLATIONS ARE TO OCCUR AFTER ALL PAINTING AND FINISH WORK IS COMPLETED AND AMBIENT TEMPERATURE AND HUMIDITY CONDITIONS ARE MAINTAINED TO INTENDED LEVEL.
2. INSTALLER REQUIRED TO V.I.F. (VERIFY IN FIELD) ALL REQUIRED MEASUREMENTS AND SIRE CONDITIONS AND ADJUST DRAPERY ACCORDINGLY.

A

SHEER LM-100  
 MATERIAL ID#200917  
 FABRIC BY PROCUREMENT  
 FABRICATION AND INSTALLATION  
 BY OTHER



**LOBBY ELEVATION**

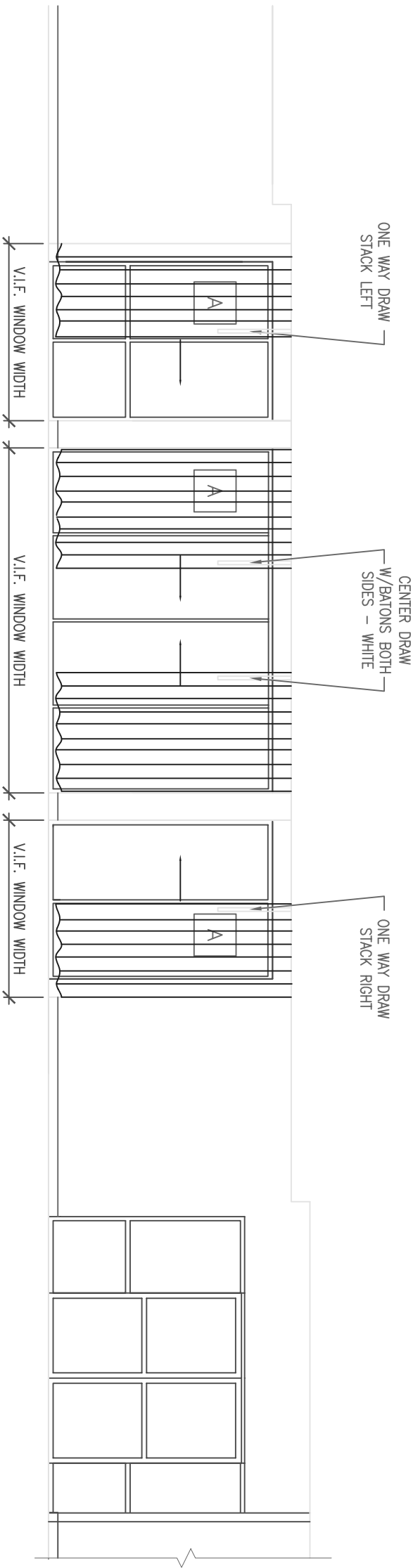
SCALE: NTS



GEN 3 TRANSFORMATIONS LOUNGE DRAPERY ELEVATION

SCALE: NTS (NOT TO SCALE)

DATE ISSUED: 08/07/09



1. ALL INSTALLATIONS ARE TO OCCUR AFTER ALL PAINTING AND FINISH WORK IS COMPLETED AND AMBIENT TEMPERATURE AND HUMIDITY CONDITIONS ARE MAINTAINED TO INTENDED LEVEL.
2. INSTALLER REQUIRED TO V.I.F. (VERIFY IN FIELD) ALL REQUIRED MEASUREMENTS AND SIRE CONDITIONS AND ADJUST DRAPERY ACCORDINGLY.



SHEER LM-100  
 MATERIAL ID#200917  
 FABRIC BY PROCUREMENT  
 FABRICATION AND INSTALLATION  
 BY OTHER



**LOBBY ELEVATION**  
 SCALE: NTS



GEN 3 TRANSFORMATIONS LOUNGE DRAPERY ELEVATION

SCALE: NTS (NOT TO SCALE)

DATE ISSUED: 08/07/09

FABRIC DESCRIPTION: SHEER FABRIC BY VALLEY FORGE TEXTILES, PATTERN: CITRUS SHEER II, #616-DMM, MARRIOTT MATERIAL ID #200917, 118" WIDTH, 100% POLYESTER, FABRIC IS DIRECTIONAL. RAILROAD WHENEVER POSSIBLE, THOUGH ENTIRE PUBLIC SPACE MUST BE UNIFORM IN DIRECTION.

"A" - FABRICATION DESCRIPTION OF SHEERS ONLY:

- RIPPLEFOLD
- EUROPEAN HEM WITH STRING WEIGHT
- CORD-OPERATED TRAVERSE RODS ARE NOT PREFERRED
- 3" HIGH DRAPERY POCKET IN CEILING WHERE POSSIBLE TO CONCEAL HARDWARE AND TOP HEM (NEW CONSTRUCTION)
- HARDWARE IS FOREST GROUP USA #CM-512 OR EQUAL, MOUNTED TIGHT TO CEILING. WALL BRACKETS ARE NOT ACCEPTABLE.
- DRAPERY SHALL RUN FLOOR-TO-CEILING WHENEVER POSSIBLE, AND CREATE ONE CONSISTANT HORIZONTAL LINE.
- DRAPERY BEHIND MEDIA PODS, WHERE CLEARANCES MAY BE TIGHT, MAY STOP AT RAISED SILL TO SAVE SPACE.
- CENTER DRAW TYPICAL. SMALLER WINDOWS MAY HAVE SIDE DRAW TO REDUCE PANELS AND BATONS. DRAPERY SHALL DRAW AND FRAME THE VIEW BEYOND, NOT CLUTTER THE VIEW BEYOND. WIDE EXPANSES OF GLASS MAY REQUIRE INTERMEDIATE PAIRS OF DRAPERY.

- CEILING HEIGHT UP TO 11'-0" AFF
- 100% FULLNESS
- FULLY-OPERABLE
- WHITE BATONS TO A 6'-0" MAXIMUM LENGTH
- MAXIMUM HEIGHT TO THE BOTTOM OF A BATON IS 5'-0" AFF
- MAXIMUM HEIGHT OF MANUALLY-OPERATED SHEERS IS 11'-0"

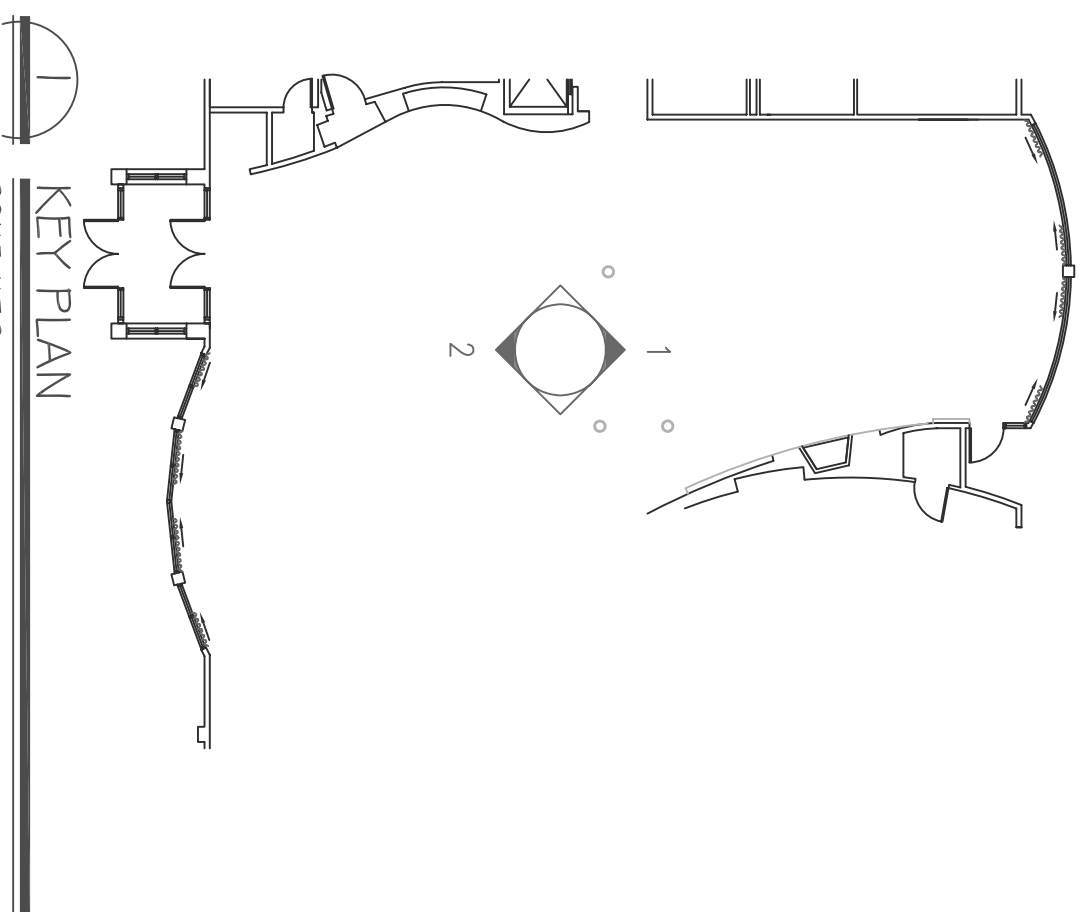
CEILING HEIGHTS OF MORE THAN 11'-0" AFF (FABRIC CANNOT BE RAILROADED)

- STATIONARY SIDE HANGINGS
- 150% FULLNESS
- HARDWARE INSTALLED ONLY WHERE DRAPERY HANGS. RODS DO NOT NEED TO BE CONTINUOUS ACROSS ENTIRE LENGTH OF WINDOW. IF CONTINUOUS RODS ARE USED, MECHANICAL STOPS SHALL BE INSTALLED TO LIMIT DRAPERY TRAVERSE.
- TO FRAME THE VIEWS BEYOND, SIDE HANGINGS SHALL PROJECT BOTH INTO WINDOW FRAME TO COVER THE EDGE OF GLASS, AND BEYOND WINDOW FRAME TO COVER A PORTION OF THE ADJACENT WALL AREA. PROJECTIONS EACH SIDE SHOULD BE PROPORTIONAL TO SPAN THE SPAN OF GLASS, AND WALL AREA ON EACH SIDE.
- ADDITIONAL LIGHT CONTROL, IF REQUIRED, SHALL BE ACHIEVED ON A PROPERTY-BY-PROPERTY BASIS USING TINTED WINDOW FILM.

1. ALL INSTALLATIONS ARE TO OCCUR AFTER ALL PAINTING AND FINISH WORK IS COMPLETED AND AMBIENT TEMPERATURE AND HUMIDITY CONDITIONS ARE MAINTAINED TO INTENDED LEVEL.
2. INSTALLER REQUIRED TO V.I.F. (VERIFY IN FIELD) ALL REQUIRED MEASUREMENTS AND SIRE CONDITIONS AND ADJUST DRAPERY ACCORDINGLY.



SHEER LM-100  
 MATERIAL ID#200917  
 FABRIC BY PROCUREMENT  
 FABRICATION AND INSTALLATION  
 BY OTHER



SCALE: N.T.S.

GEN 3 TRANSFORMATIONS LOUNGE DRAPERY PLAN

SCALE: NTS (NOT TO SCALE)

DATE ISSUED: 08/07/09



A

SHEER MR-100  
MATERIAL ID#200917  
FABRIC BY PROCUREMENT  
FABRICATION AND INSTALLATION  
BY OTHER

B

BLACK-OUT LINING MR-101  
MATERIAL ID#204868  
FABRIC BY PROCUREMENT  
FABRICATION AND INSTALLATION  
BY OTHER

**MEETING ROOM & PUBLIC BOARD ROOM - SHEERS WITH BLACKOUT LINING**

*Sheer Fabrication Details:*

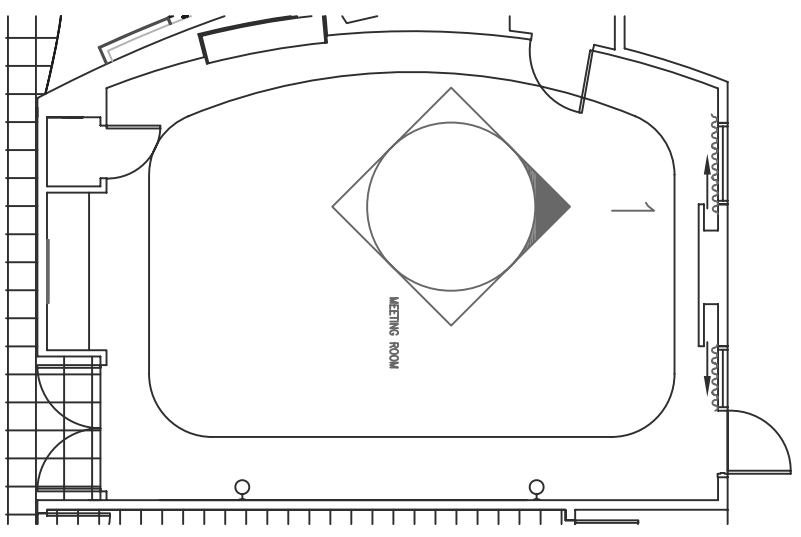
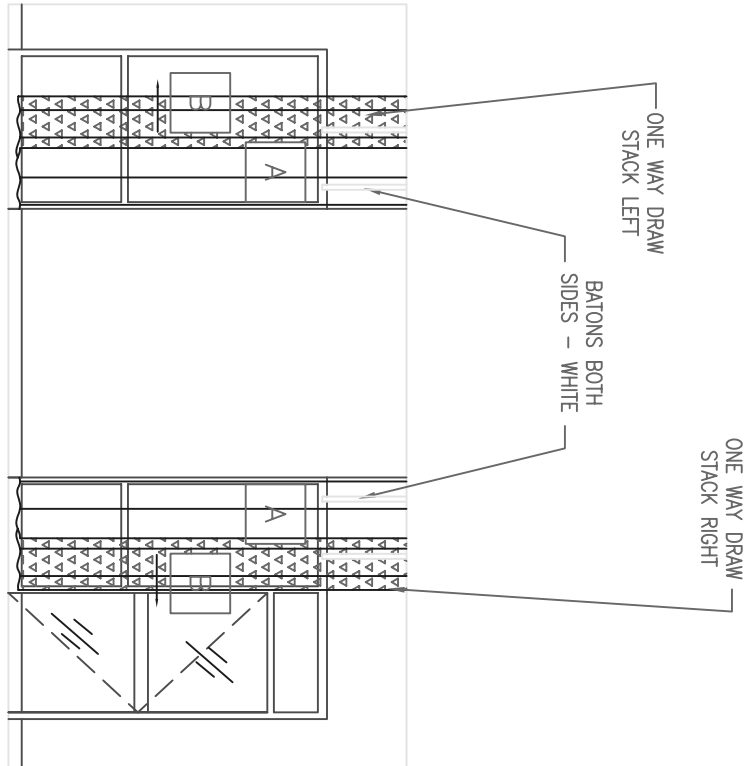
- Ripplefold @ 100% fullness
- Hanky hem with string weight
- Drapery shall run floor-to-ceiling where ever possible, and create one consistent horizontal line.
- 3" high drapery pocket in ceiling where possible to conceal hardware and top hem (New Construction)
- Fully-operable
- Cord-operated traverse rods are not preferred
- Hardware to be mounted tight to ceiling. Wall Brackets are not acceptable.
- White batons to a 6'-0" maximum length
- Maximum height to the bottom of a baton is 5'-0" AFF
- Maximum height of manually-operated sheers is 11'-0"
- Blackout drapery hung behind sheers. No over drapery.
- Remove any valance or cornice and do not replace

*Blackout Fabrication Details:*

- Ripplefold @ 100% fullness
- Existing hardware can be reused with pinch-pleat drapery @ 200% Fullness (Renovation only)
- 1/2" double-fold, clean finish hem
- A plastic covered 1"x1" weight secured in the each corner.
- French seams at panel seams

*Meeting Room and Public Board Room fire egress doors and associated exit signage shall not, nor have the potential to be covered by drapery. If light control is required, the use of a blackout film applied to the glass portion of a door and side light is preferred, and achieved on a property-by-property basis. The film shall coordinate with the décor of the room, and color of the adjacent door frame.*

1. ALL INSTALLATIONS ARE TO OCCUR AFTER ALL PAINTING AND FINISH WORK IS COMPLETED AND AMBIENT TEMPERATURE AND HUMIDITY CONDITIONS ARE MAINTAINED TO INTENDED LEVEL.
2. INSTALLER REQUIRED TO V.I.F. (VERIFY IN FIELD) ALL REQUIRED MEASUREMENTS AND SIRE CONDITIONS AND ADJUST DRAPERY ACCORDINGLY.



**LOBBY ELEVATION & PLAN**

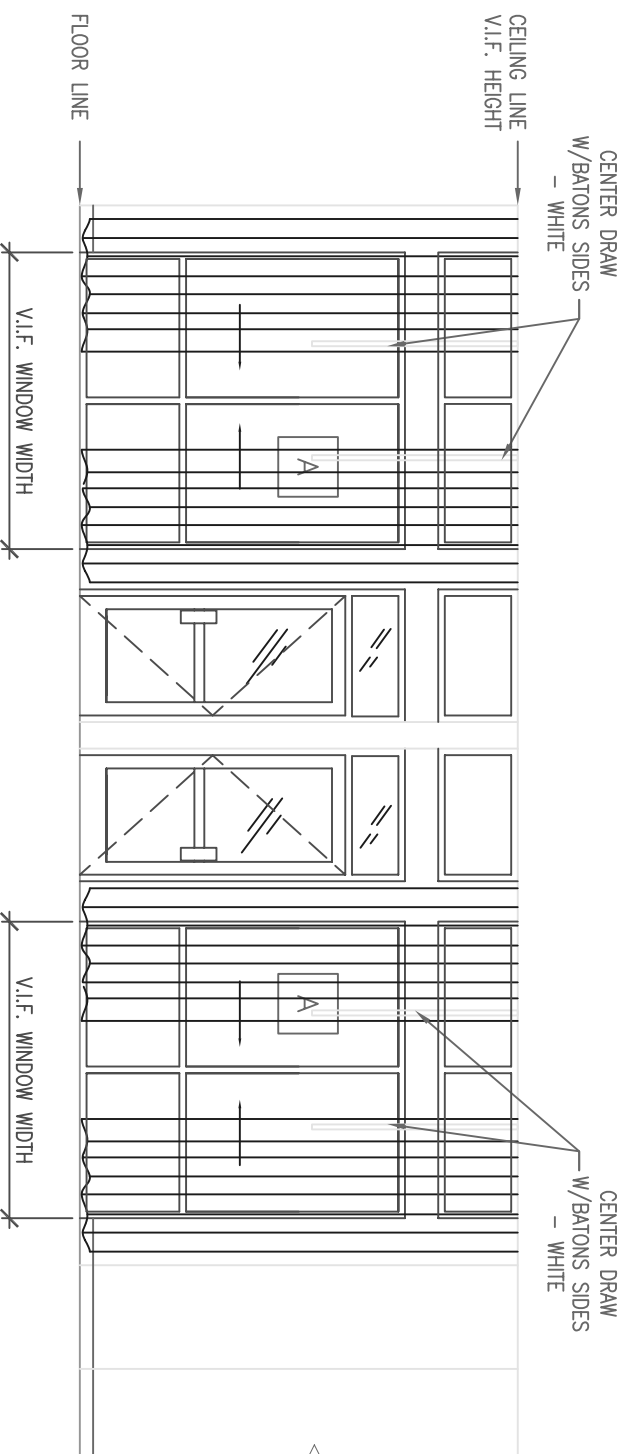
SCALE: NTS



**GEN 3 TRANSFORMATIONS MEETING ROOM DRAPERY**

SCALE: NTS (NOT TO SCALE)

DATE ISSUED: 08/07/09



1. ALL INSTALLATIONS ARE TO OCCUR AFTER ALL PAINTING AND FINISH WORK IS COMPLETED AND AMBIENT TEMPERATURE AND HUMIDITY CONDITIONS ARE MAINTAINED TO INTENDED LEVEL.

2. INSTALLER REQUIRED TO V.I.F. (VERIFY IN FIELD) ALL REQUIRED MEASUREMENTS AND SIRE CONDITIONS AND ADJUST DRAPERY ACCORDINGLY.

A

SHEER LM-100  
 MATERIAL ID#200917  
 FABRIC BY PROCUREMENT  
 FABRICATION AND INSTALLATION  
 BY OTHER



## LOBBY ELEVATION

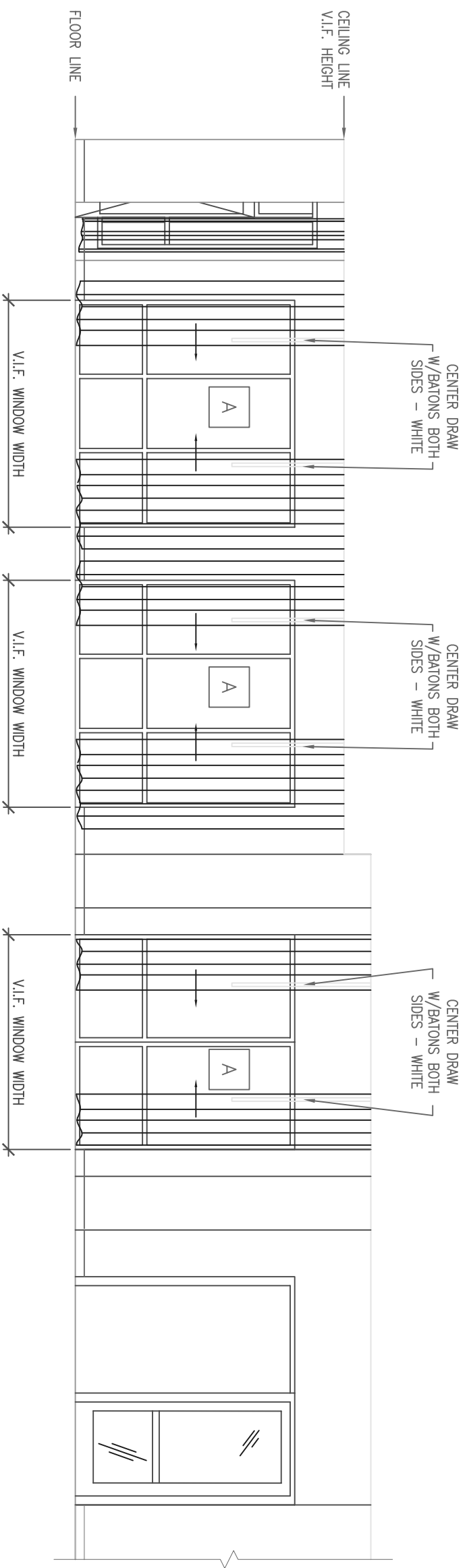
SCALE: NTS

# GEN 4.5 TRANSFORMATIONS LOUNGE DRAPERY ELEVATION

SCALE: NTS (NOT TO SCALE)

DATE ISSUED: 08/07/09





1. ALL INSTALLATIONS ARE TO OCCUR AFTER ALL PAINTING AND FINISH WORK IS COMPLETED AND AMBIENT TEMPERATURE AND HUMIDITY CONDITIONS ARE MAINTAINED TO INTENDED LEVEL.
2. INSTALLER REQUIRED TO V.I.F. (VERIFY IN FIELD) ALL REQUIRED MEASUREMENTS AND SIRE CONDITIONS AND ADJUST DRAPERY ACCORDINGLY.



SHEER LM-100  
 MATERIAL ID#200917  
 FABRIC BY PROCUREMENT  
 FABRICATION AND INSTALLATION  
 BY OTHER



**LOBBY ELEVATION**

SCALE: NTS

GEN 4.5 TRANSFORMATIONS LOUNGE DRAPERY ELEVATION

SCALE: NTS (NOT TO SCALE)

DATE ISSUED: 08/07/09



FABRIC DESCRIPTION: SHEER FABRIC BY VALLEY FORGE TEXTILES, PATTERN: CITRUS SHEER II, #616-DMM, MARRIOTT MATERIAL ID #200917, 118" WIDTH, 100% POLYESTER, FABRIC IS DIRECTIONAL. RAILROAD WHENEVER POSSIBLE, THOUGH ENTIRE PUBLIC SPACE MUST BE UNIFORM IN DIRECTION.

\*A\* - FABRICATION DESCRIPTION OF SHEERS ONLY:

- RIPPLEFOLD
- EUROPEAN HEM WITH STRING WEIGHT
- CORD-OPERATED TRAVERSE RODS ARE NOT PREFERRED
- 3" HIGH DRAPERY POCKET IN CEILING WHERE POSSIBLE TO CONCEAL HARDWARE AND TOP HEM (NEW CONSTRUCTION)
- HARDWARE IS FOREST GROUP USA #CM-512 OR EQUAL, MOUNTED TIGHT TO CEILING. WALL BRACKETS ARE NOT ACCEPTABLE.
- DRAPERY SHALL RUN FLOOR-TO-CEILING WHENEVER POSSIBLE, AND CREATE ONE CONSISTANT HORIZONTAL LINE.
- DRAPERY BEHIND MEDIA PODS, WHERE CLEARANCES MAY BE TIGHT, MAY STOP AT RAISED SILL TO SAVE SPACE.
- CENTER DRAW TYPICAL. SMALLER WINDOWS MAY HAVE SIDE DRAW TO REDUCE PANELS AND BATONS. DRAPERY SHALL DRAW AND FRAME THE VIEW BEYOND, NOT CLUTTER THE VIEW BEYOND. WIDE EXPANSES OF GLASS MAY REQUIRE INTERMEDIATE PAIRS OF DRAPERY.

- CEILING HEIGHT UP TO 11'-0" AFF
- 100% FULLNESS
- FULLY-OPERABLE
- WHITE BATONS TO A 6'-0" MAXIMUM LENGTH
- MAXIMUM HEIGHT TO THE BOTTOM OF A BATON IS 5'-0" AFF
- MAXIMUM HEIGHT OF MANUALLY-OPERATED SHEERS IS 11'-0"

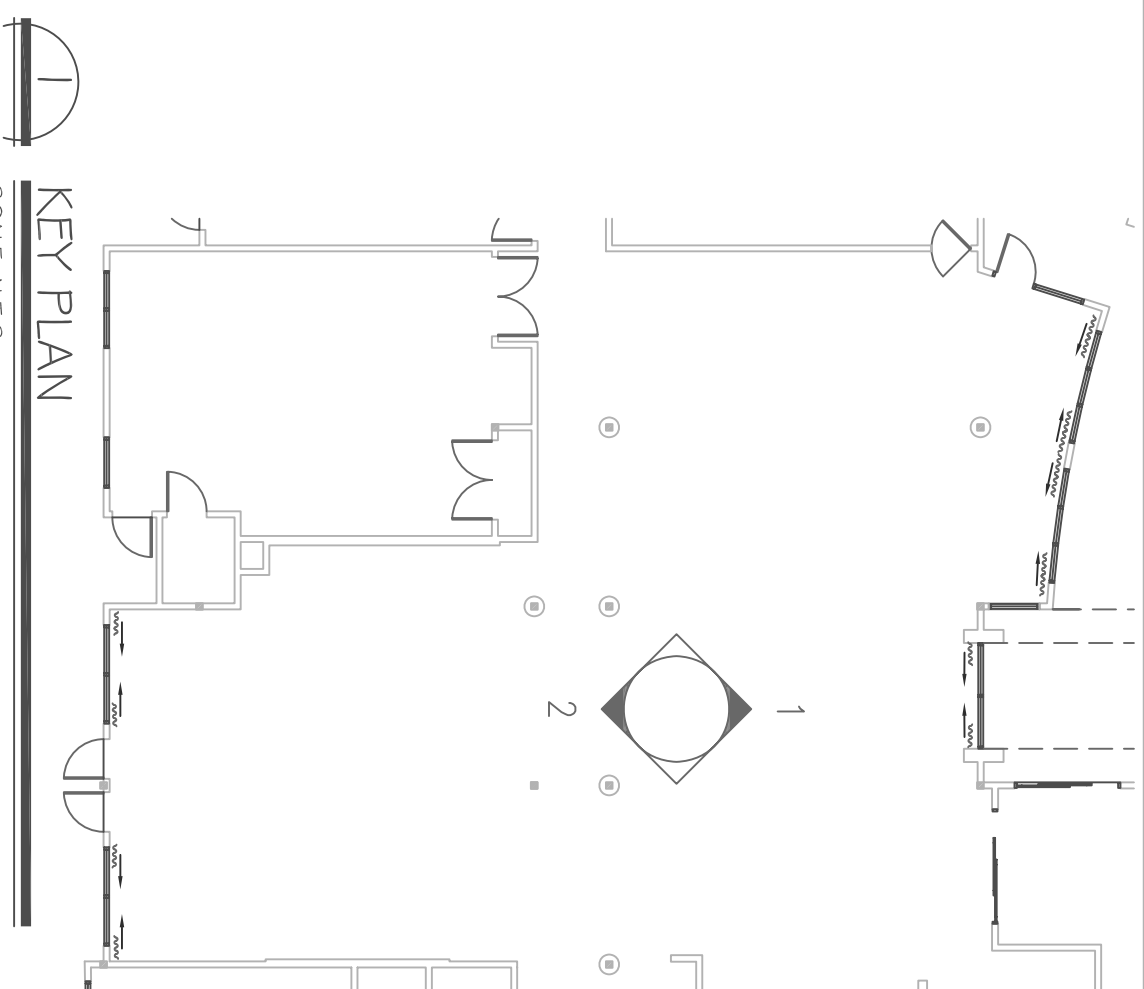
CEILING HEIGHTS OF MORE THAN 11'-0" AFF (FABRIC CANNOT BE RAILROADED)

- STATIONARY SIDE HANGINGS
- 150% FULLNESS
- HARDWARE INSTALLED ONLY WHERE DRAPERY HANGS. RODS DO NOT NEED TO BE CONTINUOUS ACROSS ENTIRE LENGTH OF WINDOW. IF CONTINUOUS RODS ARE USED, MECHANICAL STOPS SHALL BE INSTALLED TO LIMIT DRAPERY TRAVERSE.
- TO FRAME THE VIEWS BEYOND, SIDE HANGINGS SHALL PROJECT BOTH INTO WINDOW FRAME TO COVER THE EDGE OF GLASS, AND BEYOND WINDOW FRAME TO COVER A PORTION OF THE ADJACENT WALL AREA. PROJECTIONS EACH SIDE SHOULD BE PROPORTIONAL TO SPAN THE SPAN OF GLASS, AND WALL AREA ON EACH SIDE.
- ADDITIONAL LIGHT CONTROL, IF REQUIRED, SHALL BE ACHIEVED ON A PROPERTY-BY-PROPERTY BASIS USING TINTED WINDOW FILM.

1. ALL INSTALLATIONS ARE TO OCCUR AFTER ALL PAINTING AND FINISH WORK IS COMPLETED AND AMBIENT TEMPERATURE AND HUMIDITY CONDITIONS ARE MAINTAINED TO INTENDED LEVEL.
2. INSTALLER REQUIRED TO V.I.F. (VERIFY IN FIELD) ALL REQUIRED MEASUREMENTS AND SIRE CONDITIONS AND ADJUST DRAPERY ACCORDINGLY.



SHEER LM-100  
MATERIAL ID#200917  
FABRIC BY PROCUREMENT  
FABRICATION AND INSTALLATION  
BY OTHER



KEY PLAN  
SCALE: N.T.S.

# GEN 4.5 TRANSFORMATIONS LOUNGE DRAPERY PLAN

SCALE: NTS (NOT TO SCALE)

DATE ISSUED: 08/07/09



A

SHEER MR-100  
MATERIAL ID#200917  
FABRIC BY PROCUREMENT  
FABRICATION AND INSTALLATION  
BY OTHER

B

BLACK-OUT LINING MR-101  
MATERIAL ID#204868  
FABRIC BY PROCUREMENT  
FABRICATION AND INSTALLATION  
BY OTHER

**MEETING ROOM & PUBLIC BOARD ROOM - SHEERS WITH BLACKOUT LINING**

*Sheer Fabrication Details:*

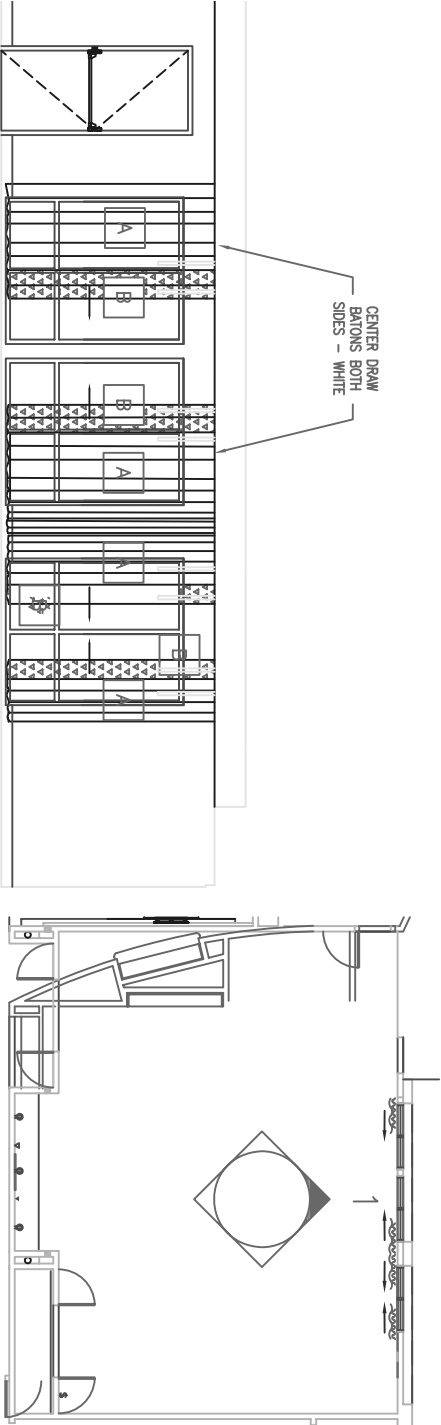
- Ripplefold @ 100% fullness
- Handy hem with string weight
- Drapery shall run floor-to-ceiling where ever possible, and create one consistent horizontal line.
- 3" high drapery pocket in ceiling where possible to conceal hardware and top hem (New Construction)
- Fully-operable
- Cord-operated traverse rods are not preferred
- Hardware to be mounted tight to ceiling. Wall Brackets are not acceptable.
- White batons to a 6'-0" maximum length
- Maximum height to the bottom of a baton is 5'-0" AFF
- Maximum height of manually-operated sheers is 11'-0"
- Blackout drapery hung behind sheers. No over drapery.
- Remove any valance or cornice and do not replace

*Blackout Fabrication Details:*

- Ripplefold @ 100% fullness
- Existing hardware can be reused with pinch-pleat drapery @ 200% Fullness (Renovation only)
- 1/2" double-fold, clean finish hem
- A plastic covered 1"x1" weight secured in the each corner.
- French seams at panel seams

*Meeting Room and Public Board Room fire egress doors and associated exit signage shall not, nor have the potential to be covered by drapery. If light control is required, the use of a blackout film applied to the glass portion of a door and side light is preferred, and achieved on a property-by-property basis. The film shall coordinate with the décor of the room, and color of the adjacent door frame.*

1. ALL INSTALLATIONS ARE TO OCCUR AFTER ALL PAINTING AND FINISH WORK IS COMPLETED AND AMBIENT TEMPERATURE AND HUMIDITY CONDITIONS ARE MAINTAINED TO INTENDED LEVEL.
2. INSTALLER REQUIRED TO V.I.F. (VERIFY IN FIELD) ALL REQUIRED MEASUREMENTS AND SIRE CONDITIONS AND ADJUST DRAPERY ACCORDINGLY.



**LOBBY ELEVATION & PLAN**

SCALE: NTS



GEN 4.5 TRANSFORMATIONS MEETING ROOM DRAPERY

SCALE: NTS (NOT TO SCALE)

DATE ISSUED: 08/07/09