

Staybridge Suites – Standardized Room Decor
Vista, Spice, Chocolate, Sage Schemes – Guestroom

InterContinental Hotels Group

Design & Construction
Three Ravinia Drive, Suite 100
Atlanta, GA 30346

AREA: Living Room / Bedroom

Manufacturer:

Fabriquilt

Attn: Barry Oltsik

901 East 14th Avenue

North Kansas City, MO 64116

P: 816-421-2000

F: 816-471-2853

E: barry@fabri-quilt.com

SPEC NO: SG – 601

DESCRIPTION: Drapery Fabrication

STYLE: Full-length stationary side panels flanking window with center draw sheers and black-outs.

FINISHED SIZE: To be verified on-site. Submit scaled shop drawing for IHG approval prior to production.

Fabrication to be in accordance with IHG standards as stated in the FF&E Construction and Specification Guidelines and as follows:

GENERAL NOTES:

1. **Vista Scheme:** Refer to spec SG-601A (V) for side panel fabric & SG-601B (V) for sheer fabric at Living Room; Refer to spec SG-601C (V) for side panel fabric & SG-602B (V) for sheer fabric at Bedroom.
2. **Spice Scheme:** Refer to spec SG-601A (P) for side panel fabric & SG-602B (P) for sheer fabric at Living Room; Refer to spec SG-601C (P) for fabric at side panel & SG-602B (P) for sheer fabric at Living Room.
3. **Refreshed Chocolate Scheme:** Refer to spec SG-601A (C) for side panel fabric & SG-601B (C) for sheer fabric.
4. **Refreshed Sage Scheme:** Refer to spec SG-601A (S) for side panel fabric & SG-601B (S) for sheer fabric.
5. Products must be contract quality, suitable for commercial use.
6. Products must meet or exceed all applicable state & local codes.
7. No products shall infringe on any third party patents, copyrights, trademarks or other intellectual property rights.

GENERAL CONSTRUCTION:

1. Fabricator to verify all site conditions, dimensions, materials required for installation, and confirm fabric yardages.
2. All hems to be blind stitched; hems must be even and not bow due to weights or irregular stitches.
3. Batons to be clear acrylic, front mounted, 48" long. Batons at ADA rooms to be ADA compliant (i.e. loops at end).
4. Pins to be stainless steel.
5. Pattern-matched at seams; seams to be hidden behind pleats.

QUANTITY: TBD

UNIT COST: \$ TBD

TOTAL COST: \$ TBD

ISSUE DATE:

10/15/11

REVISION DATE:

REV. NO:

SPEC NO:

SG – 601

All orders must be marked as specified by IHG. All installed fabrics, upholstery, carpet, wallcovering, and other finish materials must meet local fire codes and regulations. Manufacturer must provide flame certificate to owner/purchaser at time order is shipped. Fabricator and/or installer must confirm the exact quantities required. All substitutions must be approved by IHG prior to ordering. Manufacturers must provide maintenance instructions. All shop drawings, finish samples, artwork and/or strike-offs must be submitted to IHG, for approval prior to production.

Staybridge Suites – Standardized Room Decor
Vista, Spice, Chocolate, Sage Schemes – Guestroom

InterContinental Hotels Group

Design & Construction
Three Ravinia Drive, Suite 100
Atlanta, GA 30346

AREA: Living Room / Bedroom

SIDE PANELS:

1. Fabrication to consist of (1) pair stationary side panels per window, lined with 2-pass blackout, FR white lining.
2. Finished Panel size: approx. 18" w x 96" long. Each side panel to be 20% size of window. **(Field verify dimensions).**
3. Panels to be ceiling mounted; finished length to be 1/2" maximum AFF.
4. Double 4" bottom hem. 4" header with buckram in header.
5. Stationary pinch pleat. Pleat to consist of (3) fingers sewn down 4" from top.

SHEERS:

1. Fabric to be inherently flame retardant or treated to meet flame retardancy codes.
2. Fully traversing, full-length, 2-way draw, baton draw (48" baton).
3. Finished length to be 1/2" above bottom of side panels (length must not exceed length of the decorative drapery), except at PTAC units, to be 1/2" below window sill.
4. 250% fullness, overlock seams with safety stitch and surged, thread to match predominant color of face fabric.
5. French Pleat, 4" double heading with buckram, 4" double hem, 1-1/2" double-side hem.
6. Weights: 1/2" continuous covered lead weights tacked at hemline on each seam and each hem.

BLACKOUT DRAPERY:

1. Fabric: FR 3-pass, white, inherently flame retardant or treated to meet flame retardancy codes (testing certificate to be provided by fabricator).
2. Fully traversing with baton draw; 2-way draw whenever possible (same as sheer).
3. Finished length to be 1/2" above bottom of side panels (length must not exceed length of the decorative drapery and to be same length as sheer), except at PTAC units, to be 1/2" below window sill.
4. French-pleat style; 4" double heading with buckram, 4" double hem, 1-1/2" double side hem.
5. 190% fullness minimum, overlock seams with safety stitch and surged (seams should not allow light leakage).
6. Black-outs must be fabricated & installed in a manner to have sufficient overlap at center and/or sides that preclude light leakage or transfer of light (i.e. double 4" hem with blind stitch).

QUANTITY: TBD

UNIT COST: \$ TBD

TOTAL COST: \$ TBD

ISSUE DATE:
10/15/11

REVISION DATE:

REV. NO:

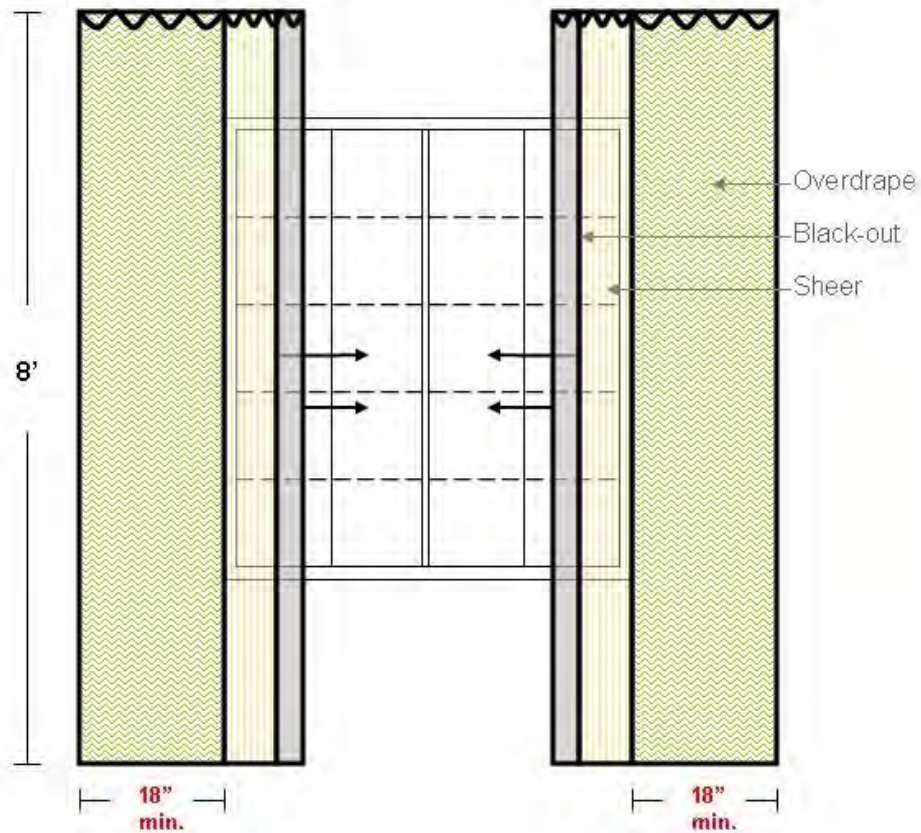
SPEC NO:

SG – 601

All orders must be marked as specified by IHG. All installed fabrics, upholstery, carpet, wallcovering, and other finish materials must meet local fire codes and regulations. Manufacturer must provide flame certificate to owner/purchaser at time order is shipped. Fabricator and/or installer must confirm the exact quantities required. All substitutions must be approved by IHG prior to ordering. Manufacturers must provide maintenance instructions. All shop drawings, finish samples, artwork and/or strike-offs must be submitted to IHG, for approval prior to production.

AREA: Living Room / Bedroom

Full-Length Stationary Side Panels flanking window, with Center Draw Sheers & Black-outs



Not to Scale

QUANTITY: TBD

UNIT COST: \$ TBD

TOTAL COST: \$ TBD

ISSUE DATE:
10/15/11

REVISION DATE:

REV. NO:

SPEC NO:

SG – 601

All orders must be marked as specified by IHG. All installed fabrics, upholstery, carpet, wallcovering, and other finish materials must meet local fire codes and regulations. Manufacturer must provide flame certificate to owner/purchaser at time order is shipped. Fabricator and/or installer must confirm the exact quantities required. All substitutions must be approved by IHG prior to ordering. Manufacturers must provide maintenance instructions. All shop drawings, finish samples, artwork and/or strike-offs must be submitted to IHG, for approval prior to production.

**Staybridge Suites – Standardized Room Decor
Refreshed Chocolate Scheme – Guestroom**

InterContinental Hotels Group

Design & Construction
Three Ravinia Drive, Suite 100
Atlanta, GA 30346

AREA: Living Room / Bedroom

MANUFACTURER:

Fabricut
Attn: Elizabeth Hassell
9303 East 46th Street
Tulsa, OK 74145
P: 800-999-5005 x 6314
F: 918-665-1177
E: elizabeth.hassell@fabricut.com

REP FIRM:

Cindy Royals
P: 770-792-7156
E: Cindy.Royals@Fabricut.com

SPEC NO: **SG – 601A (C)**

DESCRIPTION: Side Panel Fabric at Drapery

PATTERN: Custom Bobko
COLOR: Custom 5011
CONTENT: 100% Polyester
BASE CLOTH: TO (Oxford basecloth)
WEIGHT: 9.5 oz / lin. yd.
WIDTH: 54"
REPEAT: 4" Vertical, 2.2" Horizontal
RAILROADED: No

Fabrication to be in accordance with IHG standards as stated in the FF&E Construction and Specification Guidelines and as follows:

NOTES:

1. Refer to image below for fabric.
2. Refer to SG-601 for drapery fabrication. Refer to SG-601B (C) for sheer fabric.
3. Fabric must be pattern matched at all seams.
4. Fabric must be of contract quality and suitable for commercial use.
5. Per manufacturer, fabric meets or exceeds the following: Inherently passes NFPA 701.
6. Fabricator to verify all site conditions, dimensions, materials required for installation, and confirm fabric yardages.
7. Products must meet or exceed all applicable state & local codes.
8. Fabric must be treated for fire retardancy or meet applicable fire codes.
9. **Manufacturer to ship all excess fabric to property for attic stock.**
10. No products shall infringe on any third party patents, copyrights, trademarks or other intellectual property rights.



Not to Scale / Not for Color / Design Intent Only

QUANTITY: TBD

UNIT COST: \$ TBD

TOTAL COST: \$ TBD

ISSUE DATE:
8/01/11

REVISION DATE:

REV. NO:

SPEC NO:

SG – 601A (C)

All orders must be marked as specified by IHG. All installed fabrics, upholstery, carpet, wallcovering, and other finish materials must meet local fire codes and regulations. Manufacturer must provide flame certificate to owner/purchaser at time order is shipped. Fabricator and/or installer must confirm the exact quantities required. All substitutions must be approved by IHG prior to ordering. Manufacturers must provide maintenance instructions. All shop drawings, finish samples, artwork and/or strike-offs must be submitted to IHG, for approval prior to production.

**Staybridge Suites – Standardized Room Decor
Refreshed Chocolate Scheme – Guestroom**

InterContinental Hotels Group

Design & Construction
Three Ravinia Drive, Suite 100
Atlanta, GA 30346

AREA: Living Room / Bedroom

MANUFACTURER:

Fabricut
Attn: Elizabeth Hassell
9303 East 46th Street
Tulsa, OK 74145
P: 800-999-5005 x 6314
F: 918-665-1177
E: elizabeth.hassell@fabricut.com

REP FIRM:

Cindy Royals
P: 770-792-7156
E: Cindy.Royals@Fabricut.com

SPEC NO: **SG – 601B (C)**

DESCRIPTION: Sheer Fabric at Drapery

PATTERN: Silkana
COLOR: Spa
CONTENT: 100% Polyester, Inherently FR
WIDTH: 124"
REPEAT: 0"/0"
RAILROADED: Yes

Fabrication to be in accordance with IHG standards as stated in the FF&E Construction and Specification Guidelines and as follows:

NOTES:

1. Refer to image below for fabric.
2. Refer to SG-601 for drapery fabrication. Refer to SG-601A (C) for side panel fabric.
3. Fabric must be of contract quality and suitable for commercial use.
4. Fabricator to verify all site conditions, dimensions, materials required for installation, and confirm fabric yardages.
5. Per manufacturer, fabric meets the following: Passes NFPA 701.
6. Products must meet or exceed all applicable state & local codes.
7. Fabric must be treated for fire retardancy or meet applicable fire codes.
- 8. Manufacturer to ship all excess fabric to property for attic stock.**
9. No products shall infringe on any third party patents, copyrights, trademarks or other intellectual property rights.



Not to Scale / Not for Color / Design Intent Only

QUANTITY: TBD

UNIT COST: \$ TBD

TOTAL COST: \$ TBD

ISSUE DATE:
8/01/11

REVISION DATE:

REV. NO:

SPEC NO:

SG – 601B (C)

All orders must be marked as specified by IHG. All installed fabrics, upholstery, carpet, wallcovering, and other finish materials must meet local fire codes and regulations. Manufacturer must provide flame certificate to owner/purchaser at time order is shipped. Fabricator and/or installer must confirm the exact quantities required. All substitutions must be approved by IHG prior to ordering. Manufacturers must provide maintenance instructions. All shop drawings, finish samples, artwork and/or strike-offs must be submitted to IHG, for approval prior to production.

Staybridge Suites – Standardized Room Decor
Vista, Spice, Chocolate, Sage Schemes – Guestroom

InterContinental Hotels Group

Design & Construction
Three Ravinia Drive, Suite 100
Atlanta, GA 30346

AREA: Living Room / Bedroom

Manufacturer:

Fabriquilt

Attn: Barry Oltsik

901 East 14th Avenue

North Kansas City, MO 64116

P: 816-421-2000

F: 816-471-2853

E: barry@fabri-quilt.com

SPEC NO: SG – 602

DESCRIPTION: Drapery Fabrication

STYLE: Full-length stationary side panels on outside edge of each window, short one-way draw sheers and black-outs.

FINISHED SIZE: To be verified on-site. Submit scaled shop drawing for IHG approval prior to production.

Fabrication to be in accordance with IHG standards as stated in the FF&E Construction and Specification Guidelines and as follows:

GENERAL NOTES:

1. **Vista Scheme:** Refer to spec SG-601A (V) for side panel fabric & SG-601B (V) for sheer fabric at Living Room; Refer to spec SG-601C (V) for side panel fabric & SG-602B (V) for sheer fabric at Bedroom.
2. **Spice Scheme:** Refer to spec SG-601A (P) for side panel fabric & SG-602B (P) for sheer fabric at Living Room; Refer to spec SG-601C (P) for fabric at side panel & SG-602B (P) for sheer fabric at Living Room.
3. **Refreshed Chocolate Scheme:** Refer to spec SG-601A (C) for side panel fabric & SG-601B (C) for sheer fabric.
4. **Refreshed Sage Scheme:** Refer to spec SG-601A (S) for side panel fabric & SG-601B (S) for sheer fabric.
5. Products must be contract quality, suitable for commercial use.
6. Products must meet or exceed all applicable state & local codes.
7. No products shall infringe on any third party patents, copyrights, trademarks or other intellectual property rights.

GENERAL CONSTRUCTION:

1. Fabricator to verify all site conditions, dimensions, materials required for installation, and confirm fabric yardages.
2. All hems to be blind stitched; hems must be even and not bow due to weights or irregular stitches.
3. Batons to be clear acrylic, front mounted, 48" long. Batons at ADA rooms to be ADA compliant (i.e. loops at end).
4. Pins to be stainless steel.
5. Pattern-matched at seams; seams to be hidden behind pleats.

QUANTITY: TBD

UNIT COST: \$ TBD

TOTAL COST: \$ TBD

ISSUE DATE:

10/15/11

REVISION DATE:

REV. NO:

SPEC NO:

SG – 602

All orders must be marked as specified by IHG. All installed fabrics, upholstery, carpet, wallcovering, and other finish materials must meet local fire codes and regulations. Manufacturer must provide flame certificate to owner/purchaser at time order is shipped. Fabricator and/or installer must confirm the exact quantities required. All substitutions must be approved by IHG prior to ordering. Manufacturers must provide maintenance instructions. All shop drawings, finish samples, artwork and/or strike-offs must be submitted to IHG, for approval prior to production.

Staybridge Suites – Standardized Room Decor
Vista, Spice, Chocolate, Sage Schemes – Guestroom

InterContinental Hotels Group

Design & Construction
Three Ravinia Drive, Suite 100
Atlanta, GA 30346

AREA: Living Room / Bedroom

SIDE PANELS:

1. Fabrication to consist of (1) pair stationary side panels per window, lined with 2-pass blackout, FR white lining.
2. Finished Panel size: approx. 18" W minimum x 96" long. Each side panel to be 20% size of window. **(Field verify dimensions).**
3. Panels to be ceiling mounted; finished length to be 1/2" maximum AFF.
4. Double 4" bottom hem. 4" header with buckram in header.
5. Stationary pinch pleat. Pleat to consist of (3) fingers sewn down 4" from top.

SHEERS:

1. Fabric to be inherently flame retardant or treated to meet flame retardancy codes.
2. Fully traversing, full-length, 2-way draw, baton draw (48" baton).
3. Finished length to be 1/2" above bottom of side panels (length must not exceed length of the decorative drapery), except at PTAC units, to be 1/2" below window sill.
4. 250% fullness, overlock seams with safety stitch and surged, thread to match predominant color of face fabric.
5. French Pleat, 4" double heading with buckram, 4" double hem, 1-1/2" double-side hem.
6. Weights: 1/2" continuous covered lead weights tacked at hemline on each seam and each hem.

BLACKOUT DRAPERY:

1. Fabric: FR 3-pass, white, inherently flame retardant or treated to meet flame retardancy codes (testing certificate to be provided by fabricator).
2. Fully traversing with baton draw; 2-way draw whenever possible (same as sheer).
3. Finished length to be 1/2" above bottom of side panels (length must not exceed length of the decorative drapery), except at PTAC units, to be 1/2" below window sill.
4. French-pleat style; 4" double heading with buckram, 4" double hem, 1-1/2" double side hem.
5. 190% fullness minimum, overlock seams with safety stitch and surged (seams should not allow light leakage).
6. Black-outs must be fabricated & installed in a manner to have sufficient overlap at center and/or sides that preclude light leakage or transfer of light (i.e. double 4" hem with blind stitch).

QUANTITY: TBD

UNIT COST: \$ TBD

TOTAL COST: \$ TBD

ISSUE DATE:
10/15/11

REVISION DATE:

REV. NO:

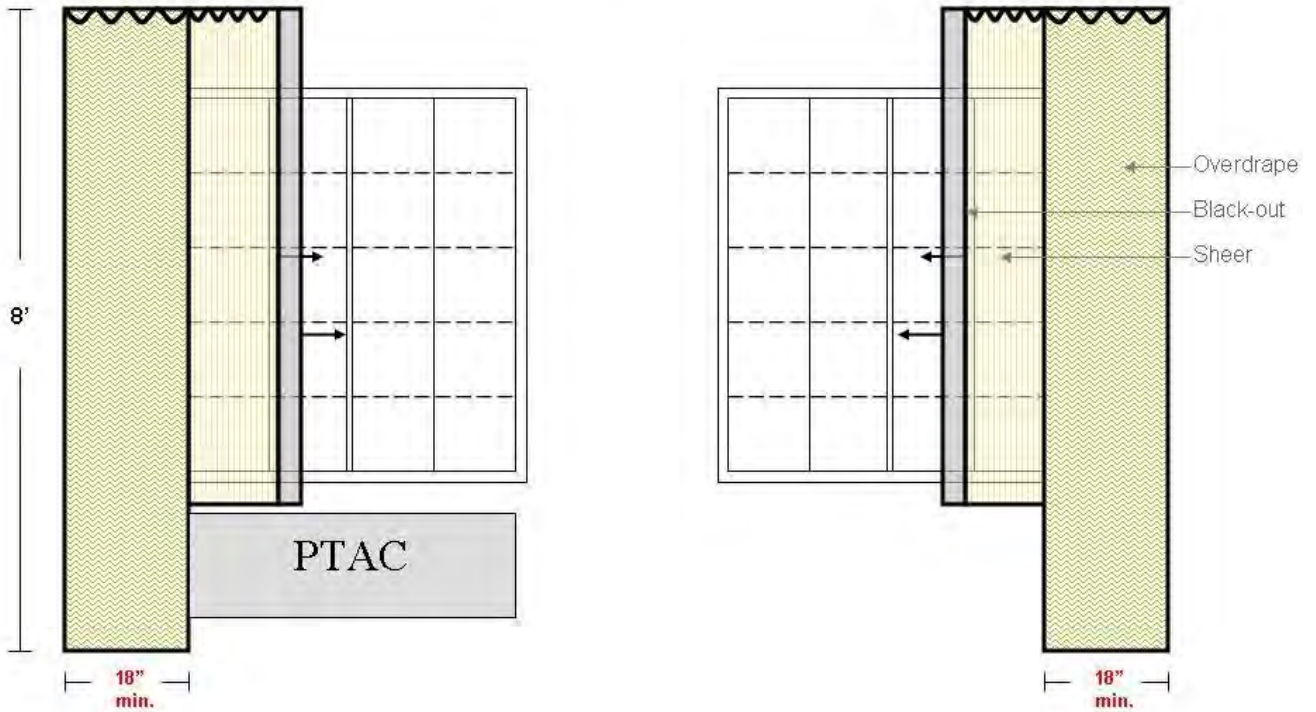
SPEC NO:

SG – 602

All orders must be marked as specified by IHG. All installed fabrics, upholstery, carpet, wallcovering, and other finish materials must meet local fire codes and regulations. Manufacturer must provide flame certificate to owner/purchaser at time order is shipped. Fabricator and/or installer must confirm the exact quantities required. All substitutions must be approved by IHG prior to ordering. Manufacturers must provide maintenance instructions. All shop drawings, finish samples, artwork and/or strike-offs must be submitted to IHG, for approval prior to production.

AREA: Living Room / Bedroom

Full-Length Stationary Side Panels on outside edge of each window, Short One-Way Draw Sheers & Black-outs



Not to Scale

QUANTITY: TBD

UNIT COST: \$ TBD

TOTAL COST: \$ TBD

ISSUE DATE:
10/15/11

REVISION DATE:

REV. NO:

SPEC NO:

SG – 602

All orders must be marked as specified by IHG. All installed fabrics, upholstery, carpet, wallcovering, and other finish materials must meet local fire codes and regulations. Manufacturer must provide flame certificate to owner/purchaser at time order is shipped. Fabricator and/or installer must confirm the exact quantities required. All substitutions must be approved by IHG prior to ordering. Manufacturers must provide maintenance instructions. All shop drawings, finish samples, artwork and/or strike-offs must be submitted to IHG, for approval prior to production.

**Staybridge Suites – Standardized Room Decor
Refreshed Chocolate Scheme – Guestroom**

InterContinental Hotels Group

Design & Construction
Three Ravinia Drive, Suite 100
Atlanta, GA 30346

AREA: Living Room / Bedroom

MANUFACTURER:

Fabricut
Attn: Elizabeth Hassell
9303 East 46th Street
Tulsa, OK 74145
P: 800-999-5005 x 6314
F: 918-665-1177
E: elizabeth.hassell@fabricut.com

REP FIRM:

Cindy Royals
P: 770-792-7156
E: Cindy.Royals@Fabricut.com

SPEC NO: **SG – 602A (C)**

DESCRIPTION: Side Panel Fabric at Drapery

PATTERN: Custom Bobko
COLOR: Custom 5011
CONTENT: 100% Polyester
BASE CLOTH: TO (Oxford basecloth)
WEIGHT: 9.5 oz / lin. yd.
WIDTH: 54"
REPEAT: 4" Vertical, 2.2" Horizontal
RAILROADED: No

Fabrication to be in accordance with IHG standards as stated in the FF&E Construction and Specification Guidelines and as follows:

NOTES:

1. Refer to image below for fabric.
2. Refer to SG-602 for drapery fabrication. Refer to SG-602B (C) for sheer fabric.
3. Fabric must be pattern matched at all seams.
4. Fabric must be of contract quality and suitable for commercial use.
5. Per manufacturer, fabric meets or exceeds the following: Inherently passes NFPA 701.
6. Fabricator to verify all site conditions, dimensions, materials required for installation, and confirm fabric yardages.
7. Products must meet or exceed all applicable state & local codes.
8. Fabric must be treated for fire retardancy or meet applicable fire codes.
9. **Manufacturer to ship all excess fabric to property for attic stock.**
10. No products shall infringe on any third party patents, copyrights, trademarks or other intellectual property rights.



Not to Scale / Not for Color / Design Intent Only

QUANTITY: TBD

UNIT COST: \$ TBD

TOTAL COST: \$ TBD

ISSUE DATE:
8/01/11

REVISION DATE:

REV. NO:

SPEC NO:

SG – 602A (C)

All orders must be marked as specified by IHG. All installed fabrics, upholstery, carpet, wallcovering, and other finish materials must meet local fire codes and regulations. Manufacturer must provide flame certificate to owner/purchaser at time order is shipped. Fabricator and/or installer must confirm the exact quantities required. All substitutions must be approved by IHG prior to ordering. Manufacturers must provide maintenance instructions. All shop drawings, finish samples, artwork and/or strike-offs must be submitted to IHG, for approval prior to production.

**Staybridge Suites – Standardized Room Decor
Refreshed Chocolate Scheme – Guestroom**

InterContinental Hotels Group

Design & Construction
Three Ravinia Drive, Suite 100
Atlanta, GA 30346

AREA: Living Room / Bedroom

MANUFACTURER:

Fabricut
Attn: Elizabeth Hassell
9303 East 46th Street
Tulsa, OK 74145
P: 800-999-5005 x 6314
F: 918-665-1177
E: elizabeth.hassell@fabricut.com

REP FIRM:

Cindy Royals
P: 770-792-7156
E: Cindy.Royals@Fabricut.com

SPEC NO: **SG – 602B (C)**

DESCRIPTION: Sheer Fabric at Drapery

PATTERN: Silkana
COLOR: Spa
CONTENT: 100% Polyester, Inherently FR
WIDTH: 124"
REPEAT: 0"/0"
RAILROADED: Yes

Fabrication to be in accordance with IHG standards as stated in the FF&E Construction and Specification Guidelines and as follows:

NOTES:

1. Refer to image below for fabric.
2. Refer to SG-602 for drapery fabrication. Refer to SG-602A (C) for side panel fabric.
3. Fabric must be of contract quality and suitable for commercial use.
4. Fabricator to verify all site conditions, dimensions, materials required for installation, and confirm fabric yardages.
5. Per manufacturer, fabric meets the following: Passes NFPA 701.
6. Products must meet or exceed all applicable state & local codes.
7. Fabric must be treated for fire retardancy or meet applicable fire codes.
- 8. Manufacturer to ship all excess fabric to property for attic stock.**
9. No products shall infringe on any third party patents, copyrights, trademarks or other intellectual property rights.



Not to Scale / Not for Color / Design Intent Only

QUANTITY: TBD

UNIT COST: \$ TBD

TOTAL COST: \$ TBD

ISSUE DATE:
8/01/11

REVISION DATE:

REV. NO:

SPEC NO:

SG – 602B (C)

All orders must be marked as specified by IHG. All installed fabrics, upholstery, carpet, wallcovering, and other finish materials must meet local fire codes and regulations. Manufacturer must provide flame certificate to owner/purchaser at time order is shipped. Fabricator and/or installer must confirm the exact quantities required. All substitutions must be approved by IHG prior to ordering. Manufacturers must provide maintenance instructions. All shop drawings, finish samples, artwork and/or strike-offs must be submitted to IHG, for approval prior to production.

Staybridge Suites – Standardized Room Decor
Vista, Spice, Chocolate, Sage Schemes – Guestroom

InterContinental Hotels Group

Design & Construction
Three Ravinia Drive, Suite 100
Atlanta, GA 30346

AREA: Living Room / Bedroom

Manufacturer:

Fabriquilt

Attn: Barry Oltsik

901 East 14th Avenue

North Kansas City, MO 64116

P: 816-421-2000

F: 816-471-2853

E: barry@fabri-quilt.com

SPEC NO: SG – 603

DESCRIPTION: Drapery Fabrication

STYLE: Full-length stationary side panel at right with one-way draw sheer to black-out to PTAC.

FINISHED SIZE: To be verified on-site. Submit scaled shop drawing for IHG approval prior to production.

Fabrication to be in accordance with IHG standards as stated in the FF&E Construction and Specification Guidelines and as follows:

GENERAL NOTES:

1. **Vista Scheme:** Refer to spec SG-601A (V) for side panel fabric & SG-601B (V) for sheer fabric at Living Room; Refer to spec SG-601C (V) for side panel fabric & SG-602B (V) for sheer fabric at Bedroom.
2. **Spice Scheme:** Refer to spec SG-601A (P) for side panel fabric & SG-602B (P) for sheer fabric at Living Room; Refer to spec SG-601C (P) for fabric at side panel & SG-602B (P) for sheer fabric at Living Room.
3. **Refreshed Chocolate Scheme:** Refer to spec SG-601A (C) for side panel fabric & SG-601B (C) for sheer fabric.
4. **Refreshed Sage Scheme:** Refer to spec SG-601A (S) for side panel fabric & SG-601B (S) for sheer fabric.
5. Products must be contract quality, suitable for commercial use.
6. Products must meet or exceed all applicable state & local codes.
7. No products shall infringe on any third party patents, copyrights, trademarks or other intellectual property rights.

GENERAL CONSTRUCTION:

1. Fabricator to verify all site conditions, dimensions, materials required for installation, and confirm fabric yardages.
2. All hems to be blind stitched; hems must be even and not bow due to weights or irregular stitches.
3. Batons to be clear acrylic, front mounted, 48" long. Batons at ADA rooms to be ADA compliant (i.e. loops at end).
4. Pins to be stainless steel.
5. Pattern-matched at seams; seams to be hidden behind pleats.

QUANTITY: TBD

UNIT COST: \$ TBD

TOTAL COST: \$ TBD

ISSUE DATE:

10/15/11

REVISION DATE:

REV. NO:

SPEC NO:

SG – 603

All orders must be marked as specified by IHG. All installed fabrics, upholstery, carpet, wallcovering, and other finish materials must meet local fire codes and regulations. Manufacturer must provide flame certificate to owner/purchaser at time order is shipped. Fabricator and/or installer must confirm the exact quantities required. All substitutions must be approved by IHG prior to ordering. Manufacturers must provide maintenance instructions. All shop drawings, finish samples, artwork and/or strike-offs must be submitted to IHG, for approval prior to production.

Staybridge Suites – Standardized Room Decor
Vista, Spice, Chocolate, Sage Schemes – Guestroom

InterContinental Hotels Group

Design & Construction
Three Ravinia Drive, Suite 100
Atlanta, GA 30346

AREA: Living Room / Bedroom

SIDE PANELS:

1. Fabrication to consist of (1) pair stationary side panels per window, lined with 2-pass blackout, FR white lining.
2. Finished Panel size: approx. 18" W minimum x 96" long. Each side panel to be 20% size of window. **(Field verify dimensions).**
3. Panels to be ceiling mounted; finished length to be 1/2" maximum AFF.
4. Double 4" bottom hem. 4" header with buckram in header.
5. Stationary pinch pleat. Pleat to consist of (3) fingers sewn down 4" from top.

SHEERS:

1. Fabric to be inherently flame retardant or treated to meet flame retardancy codes.
2. Fully traversing, full-length, 2-way draw, baton draw (48" baton).
3. Finished length to be 1/2" above bottom of side panels (length must not exceed length of the decorative drapery), **except at PTAC units, to be 1/2" below window sill.**
4. 250% fullness, overlock seams with safety stitch and surged, thread to match predominant color of face fabric.
5. French Pleat, 4" double heading with buckram, 4" double hem, 1-1/2" double-side hem.
6. Weights: 1/2" continuous covered lead weights tacked at hemline on each seam and each hem.

BLACKOUT DRAPERY:

1. Fabric: FR 3-pass, white, inherently flame retardant or treated to meet flame retardancy codes (testing certificate to be provided by fabricator).
2. Fully traversing with baton draw; 2-way draw whenever possible (same as sheer).
3. Finished length to be 1/2" above bottom of side panels (length must not exceed length of the decorative drapery), **except at PTAC units, to be 1/2" below window sill.**
4. French-pleat style; 4" double heading with buckram, 4" double hem, 1-1/2" double side hem.
5. 190% fullness minimum, overlock seams with safety stitch and surged (seams should not allow light leakage).
6. Black-outs must be fabricated & installed in a manner to have sufficient overlap at center and/or sides that preclude light leakage or transfer of light (i.e. double 4" hem with blind stitch).

QUANTITY: TBD

UNIT COST: \$ TBD

TOTAL COST: \$ TBD

ISSUE DATE:

REVISION DATE:

REV. NO:

SPEC NO:

10/15/11

SG – 603

All orders must be marked as specified by IHG. All installed fabrics, upholstery, carpet, wallcovering, and other finish materials must meet local fire codes and regulations. Manufacturer must provide flame certificate to owner/purchaser at time order is shipped. Fabricator and/or installer must confirm the exact quantities required. All substitutions must be approved by IHG prior to ordering. Manufacturers must provide maintenance instructions. All shop drawings, finish samples, artwork and/or strike-offs must be submitted to IHG, for approval prior to production.

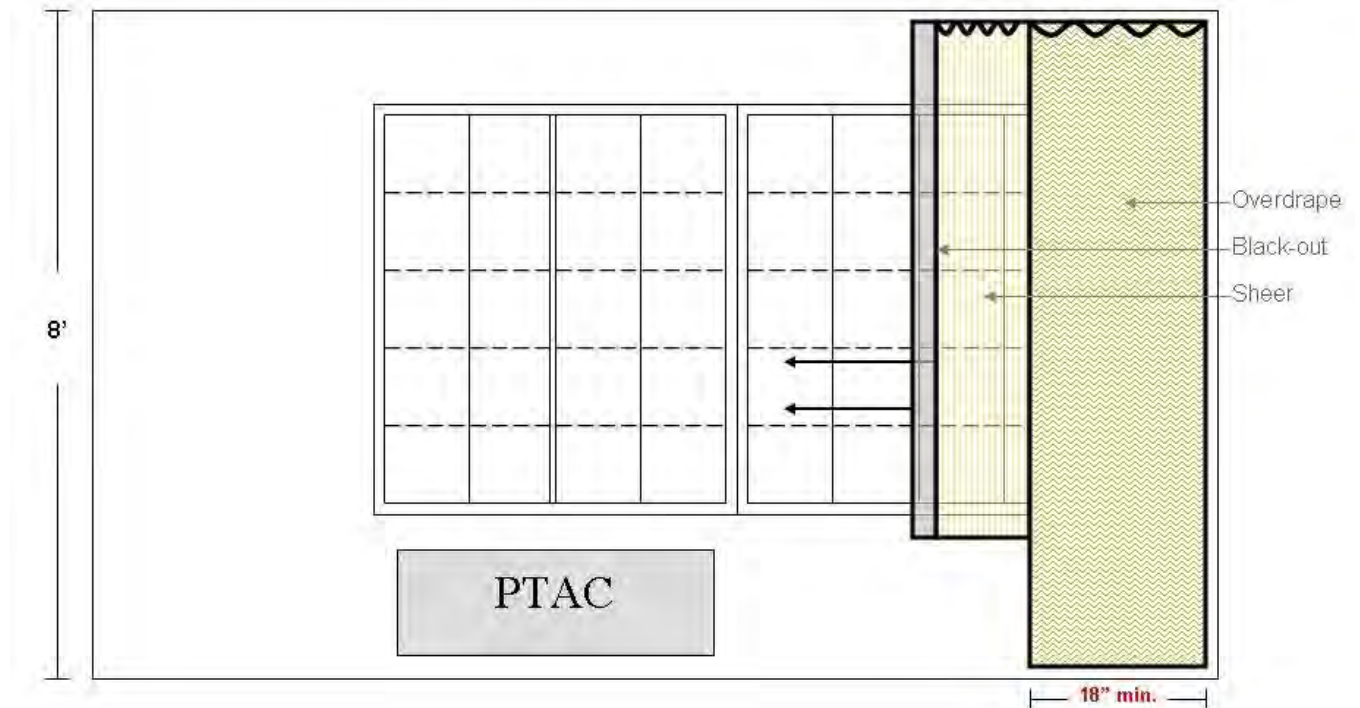
Staybridge Suites – Standardized Room Decor
Vista, Spice, Chocolate, Sage Schemes – Guestroom

InterContinental Hotels Group

Design & Construction
Three Ravinia Drive, Suite 100
Atlanta, GA 30346

AREA: Living Room / Bedroom

Full-Length Stationary Side Panel at Right, with One-Way Draw Sheer and Black-out to PTAC



Not to Scale

QUANTITY: TBD

UNIT COST: \$ TBD

TOTAL COST: \$ TBD

ISSUE DATE:
10/15/11

REVISION DATE:

REV. NO:

SPEC NO:

SG – 603

All orders must be marked as specified by IHG. All installed fabrics, upholstery, carpet, wallcovering, and other finish materials must meet local fire codes and regulations. Manufacturer must provide flame certificate to owner/purchaser at time order is shipped. Fabricator and/or installer must confirm the exact quantities required. All substitutions must be approved by IHG prior to ordering. Manufacturers must provide maintenance instructions. All shop drawings, finish samples, artwork and/or strike-offs must be submitted to IHG, for approval prior to production.

**Staybridge Suites – Standardized Room Decor
Refreshed Chocolate Scheme – Guestroom**

InterContinental Hotels Group

Design & Construction
Three Ravinia Drive, Suite 100
Atlanta, GA 30346

AREA: Living Room / Bedroom

MANUFACTURER:

Fabricut
Attn: Elizabeth Hassell
9303 East 46th Street
Tulsa, OK 74145
P: 800-999-5005 x 6314
F: 918-665-1177
E: elizabeth.hassell@fabricut.com

REP FIRM:

Cindy Royals
P: 770-792-7156
E: Cindy.Royals@Fabricut.com

SPEC NO: **SG – 603A (C)**

DESCRIPTION: Side Panel Fabric at Drapery

PATTERN: Custom Bobko
COLOR: Custom 5011
CONTENT: 100% Polyester
BASE CLOTH: TO (Oxford basecloth)
WEIGHT: 9.5 oz / lin. yd.
WIDTH: 54"
REPEAT: 4" Vertical, 2.2" Horizontal
RAILROADED: No

Fabrication to be in accordance with IHG standards as stated in the FF&E Construction and Specification Guidelines and as follows:

NOTES:

1. Refer to image below for fabric.
2. Refer to SG-603 for drapery fabrication. Refer to SG-603B (C) for sheer fabric.
3. Fabric must be pattern matched at all seams.
4. Fabric must be of contract quality and suitable for commercial use.
5. Per manufacturer, fabric meets or exceeds the following: Inherently passes NFPA 701.
6. Fabricator to verify all site conditions, dimensions, materials required for installation, and confirm fabric yardages.
7. Products must meet or exceed all applicable state & local codes.
8. Fabric must be treated for fire retardancy or meet applicable fire codes.
9. **Manufacturer to ship all excess fabric to property for attic stock.**
10. No products shall infringe on any third party patents, copyrights, trademarks or other intellectual property rights.



Not to Scale / Not for Color / Design Intent Only

QUANTITY: TBD

UNIT COST: \$ TBD

TOTAL COST: \$ TBD

ISSUE DATE:
8/01/11

REVISION DATE:

REV. NO:

SPEC NO:

SG – 603A (C)

All orders must be marked as specified by IHG. All installed fabrics, upholstery, carpet, wallcovering, and other finish materials must meet local fire codes and regulations. Manufacturer must provide flame certificate to owner/purchaser at time order is shipped. Fabricator and/or installer must confirm the exact quantities required. All substitutions must be approved by IHG prior to ordering. Manufacturers must provide maintenance instructions. All shop drawings, finish samples, artwork and/or strike-offs must be submitted to IHG, for approval prior to production.

Staybridge Suites – Standardized Room Decor
Refreshed Chocolate Scheme – Guestroom

InterContinental Hotels Group

Design & Construction
Three Ravinia Drive, Suite 100
Atlanta, GA 30346

AREA: Living Room / Bedroom

MANUFACTURER:

Fabricut
Attn: Elizabeth Hassell
9303 East 46th Street
Tulsa, OK 74145
P: 800-999-5005 x 6314
F: 918-665-1177
E: elizabeth.hassell@fabricut.com

REP FIRM:

Cindy Royals
P: 770-792-7156
E: Cindy.Royals@Fabricut.com

SPEC NO: **SG – 603B (C)**

DESCRIPTION: Sheer Fabric at Drapery

PATTERN: Silkana
COLOR: Spa
CONTENT: 100% Polyester, Inherently FR
WIDTH: 124"
REPEAT: 0"/0"
RAILROADED: Yes

Fabrication to be in accordance with IHG standards as stated in the FF&E Construction and Specification Guidelines and as follows:

NOTES:

1. Refer to image below for fabric.
2. Refer to SG-603 for drapery fabrication. Refer to SG-603A (C) for side panel fabric.
3. Fabric must be of contract quality and suitable for commercial use.
4. Fabricator to verify all site conditions, dimensions, materials required for installation, and confirm fabric yardages.
5. Per manufacturer, fabric meets the following: Passes NFPA 701.
6. Products must meet or exceed all applicable state & local codes.
7. Fabric must be treated for fire retardancy or meet applicable fire codes.
- 8. Manufacturer to ship all excess fabric to property for attic stock.**
9. No products shall infringe on any third party patents, copyrights, trademarks or other intellectual property rights.



Not to Scale / Not for Color / Design Intent Only

QUANTITY: TBD

UNIT COST: \$ TBD

TOTAL COST: \$ TBD

ISSUE DATE:
8/01/11

REVISION DATE:

REV. NO:

SPEC NO:

SG – 603B (C)

All orders must be marked as specified by IHG. All installed fabrics, upholstery, carpet, wallcovering, and other finish materials must meet local fire codes and regulations. Manufacturer must provide flame certificate to owner/purchaser at time order is shipped. Fabricator and/or installer must confirm the exact quantities required. All substitutions must be approved by IHG prior to ordering. Manufacturers must provide maintenance instructions. All shop drawings, finish samples, artwork and/or strike-offs must be submitted to IHG, for approval prior to production.

Staybridge Suites – Standardized Room Decor
Vista, Spice, Chocolate, Sage Schemes – Guestroom

InterContinental Hotels Group

Design & Construction
Three Ravinia Drive, Suite 100
Atlanta, GA 30346

AREA: Living Room / Bedroom

Manufacturer:

Fabriquilt

Attn: Barry Oltsik

901 East 14th Avenue

North Kansas City, MO 64116

P: 816-421-2000

F: 816-471-2853

E: barry@fabri-quilt.com

SPEC NO: SG – 604

DESCRIPTION: Drapery Fabrication

STYLE: Full-length stationary side panels on outside edge of each window, one-way draw sheers and black-outs, no PTAC.

FINISHED SIZE: To be verified on-site. Submit scaled shop drawing for IHG approval prior to production.

Fabrication to be in accordance with IHG standards as stated in the FF&E Construction and Specification Guidelines and as follows:

GENERAL NOTES:

- Vista Scheme:** Refer to spec SG-601A (V) for side panel fabric & SG-601B (V) for sheer fabric at Living Room; Refer to spec SG-601C (V) for side panel fabric & SG-602B (V) for sheer fabric at Bedroom.
- Spice Scheme:** Refer to spec SG-601A (P) for side panel fabric & SG-602B (P) for sheer fabric at Living Room; Refer to spec SG-601C (P) for fabric at side panel & SG-602B (P) for sheer fabric at Living Room.
- Refreshed Chocolate Scheme:** Refer to spec SG-601A (C) for side panel fabric & SG-601B (C) for sheer fabric.
- Refreshed Sage Scheme:** Refer to spec SG-601A (S) for side panel fabric & SG-601B (S) for sheer fabric.
- Products must be contract quality, suitable for commercial use.
- Products must meet or exceed all applicable state & local codes.
- No products shall infringe on any third party patents, copyrights, trademarks or other intellectual property rights.

GENERAL CONSTRUCTION:

- Fabricator to verify all site conditions, dimensions, materials required for installation, and confirm fabric yardages.
- All hems to be blind stitched; hems must be even and not bow due to weights or irregular stitches.
- Batons to be clear acrylic, front mounted, 48" long. Batons at ADA rooms to be ADA compliant (i.e. loops at end).
- Pins to be stainless steel.
- Pattern-matched at seams; seams to be hidden behind pleats.

QUANTITY: TBD

UNIT COST: \$ TBD

TOTAL COST: \$ TBD

ISSUE DATE:

10/15/11

REVISION DATE:

REV. NO:

SPEC NO:

SG – 604

All orders must be marked as specified by IHG. All installed fabrics, upholstery, carpet, wallcovering, and other finish materials must meet local fire codes and regulations. Manufacturer must provide flame certificate to owner/purchaser at time order is shipped. Fabricator and/or installer must confirm the exact quantities required. All substitutions must be approved by IHG prior to ordering. Manufacturers must provide maintenance instructions. All shop drawings, finish samples, artwork and/or strike-offs must be submitted to IHG, for approval prior to production.

Staybridge Suites – Standardized Room Decor
Vista, Spice, Chocolate, Sage Schemes – Guestroom

InterContinental Hotels Group

Design & Construction
Three Ravinia Drive, Suite 100
Atlanta, GA 30346

AREA: Living Room / Bedroom

SIDE PANELS:

1. Fabrication to consist of (1) pair stationary side panels per window, lined with 2-pass blackout, FR white lining.
2. Panel size: approx. 18" W minimum x 96" long. Each side panel to be 20% size of window. **(Field verify dimensions).**
3. Finished Panels to be ceiling mounted; finished length to be 1/2" maximum AFF.
4. Double 4" bottom hem. 4" header with buckram in header.
5. Stationary pinch pleat. Pleat to consist of (3) fingers sewn down 4" from top.

SHEERS:

1. Fabric to be inherently flame retardant or treated to meet flame retardancy codes.
2. Fully traversing, full-length, 2-way draw, baton draw (48" baton).
3. Finished length to be 1/2" above bottom of side panels (length must not exceed length of the decorative drapery), except at PTAC units, to be 1/2" below window sill.
4. 250% fullness, overlock seams with safety stitch and surged, thread to match predominant color of face fabric.
5. French Pleat, 4" double heading with buckram, 4" double hem, 1-1/2" double-side hem.
6. Weights: 1/2" continuous covered lead weights tacked at hemline on each seam and each hem.

BLACKOUT DRAPERY:

1. Fabric: FR 3-pass, white, inherently flame retardant or treated to meet flame retardancy codes (testing certificate to be provided by fabricator).
2. Fully traversing with baton draw; 2-way draw whenever possible (same as sheer).
3. Finished length to be 1/2" above bottom of side panels (length must not exceed length of the decorative drapery), except at PTAC units, to be 1/2" below window sill.
4. French-pleat style; 4" double heading with buckram, 4" double hem, 1-1/2" double side hem.
5. 190% fullness minimum, overlock seams with safety stitch and surged (seams should not allow light leakage).
6. Black-outs must be fabricated & installed in a manner to have sufficient overlap at center and/or sides that preclude light leakage or transfer of light (i.e. double 4" hem with blind stitch).

QUANTITY: TBD

UNIT COST: \$ TBD

TOTAL COST: \$ TBD

ISSUE DATE:

10/15/11

REVISION DATE:

REV. NO:

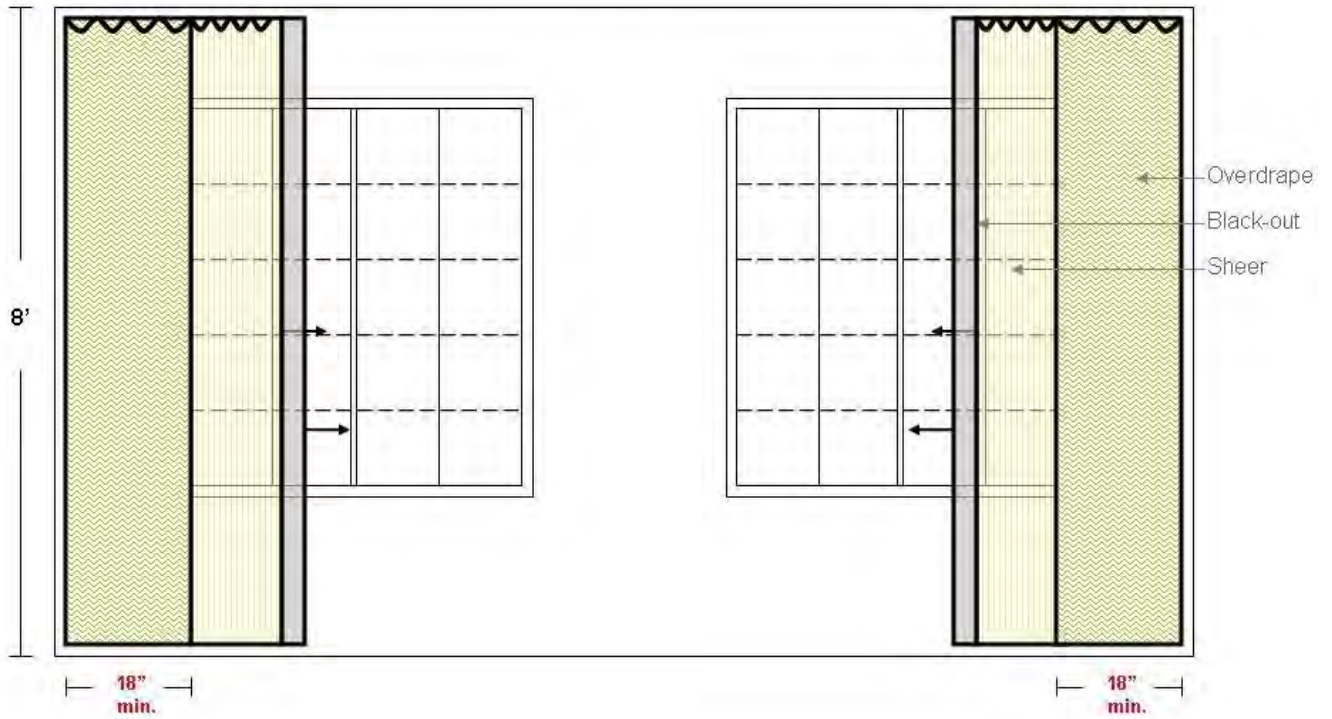
SPEC NO:

SG – 604

All orders must be marked as specified by IHG. All installed fabrics, upholstery, carpet, wallcovering, and other finish materials must meet local fire codes and regulations. Manufacturer must provide flame certificate to owner/purchaser at time order is shipped. Fabricator and/or installer must confirm the exact quantities required. All substitutions must be approved by IHG prior to ordering. Manufacturers must provide maintenance instructions. All shop drawings, finish samples, artwork and/or strike-offs must be submitted to IHG, for approval prior to production.

AREA: Living Room / Bedroom

Full-Length Stationary Side Panels on outside edge of each window, One-Way Draw Sheers & Black-outs



Not to Scale

QUANTITY: TBD

UNIT COST: \$ TBD

TOTAL COST: \$ TBD

ISSUE DATE:
10/15/11

REVISION DATE:

REV. NO:

SPEC NO:

SG – 604

All orders must be marked as specified by IHG. All installed fabrics, upholstery, carpet, wallcovering, and other finish materials must meet local fire codes and regulations. Manufacturer must provide flame certificate to owner/purchaser at time order is shipped. Fabricator and/or installer must confirm the exact quantities required. All substitutions must be approved by IHG prior to ordering. Manufacturers must provide maintenance instructions. All shop drawings, finish samples, artwork and/or strike-offs must be submitted to IHG, for approval prior to production.

**Staybridge Suites – Standardized Room Decor
Refreshed Chocolate Scheme – Guestroom**

InterContinental Hotels Group

Design & Construction
Three Ravinia Drive, Suite 100
Atlanta, GA 30346

AREA: Living Room / Bedroom

MANUFACTURER:

Fabricut
Attn: Elizabeth Hassell
9303 East 46th Street
Tulsa, OK 74145
P: 800-999-5005 x 6314
F: 918-665-1177
E: elizabeth.hassell@fabricut.com

REP FIRM:

Cindy Royals
P: 770-792-7156
E: Cindy.Royals@Fabricut.com

SPEC NO: **SG – 604A (C)**

DESCRIPTION: Side Panel Fabric at Drapery

PATTERN: Custom Bobko
COLOR: Custom 5011
CONTENT: 100% Polyester
BASE CLOTH: TO (Oxford basecloth)
WEIGHT: 9.5 oz / lin. yd.
WIDTH: 54"
REPEAT: 4" Vertical, 2.2" Horizontal
RAILROADED: No

Fabrication to be in accordance with IHG standards as stated in the FF&E Construction and Specification Guidelines and as follows:

NOTES:

1. Refer to image below for fabric.
2. Refer to SG-604 for drapery fabrication. Refer to SG-604B (C) for sheer fabric.
3. Fabric must be pattern matched at all seams.
4. Fabric must be of contract quality and suitable for commercial use.
5. Per manufacturer, fabric meets or exceeds the following: Inherently passes NFPA 701.
6. Fabricator to verify all site conditions, dimensions, materials required for installation, and confirm fabric yardages.
7. Products must meet or exceed all applicable state & local codes.
8. Fabric must be treated for fire retardancy or meet applicable fire codes.
9. **Manufacturer to ship all excess fabric to property for attic stock.**
10. No products shall infringe on any third party patents, copyrights, trademarks or other intellectual property rights.



Not to Scale / Not for Color / Design Intent Only

QUANTITY: TBD

UNIT COST: \$ TBD

TOTAL COST: \$ TBD

ISSUE DATE:
8/01/11

REVISION DATE:

REV. NO:

SPEC NO:

SG – 604A (C)

All orders must be marked as specified by IHG. All installed fabrics, upholstery, carpet, wallcovering, and other finish materials must meet local fire codes and regulations. Manufacturer must provide flame certificate to owner/purchaser at time order is shipped. Fabricator and/or installer must confirm the exact quantities required. All substitutions must be approved by IHG prior to ordering. Manufacturers must provide maintenance instructions. All shop drawings, finish samples, artwork and/or strike-offs must be submitted to IHG, for approval prior to production.

Staybridge Suites – Standardized Room Decor
Refreshed Chocolate Scheme – Guestroom

InterContinental Hotels Group

Design & Construction
Three Ravinia Drive, Suite 100
Atlanta, GA 30346

AREA: Living Room / Bedroom

MANUFACTURER:

Fabricut
Attn: Elizabeth Hassell
9303 East 46th Street
Tulsa, OK 74145
P: 800-999-5005 x 6314
F: 918-665-1177
E: elizabeth.hassell@fabricut.com

REP FIRM:

Cindy Royals
P: 770-792-7156
E: Cindy.Royals@Fabricut.com

SPEC NO: **SG – 604B (C)**

DESCRIPTION: Sheer Fabric at Drapery

PATTERN: Silkana
COLOR: Spa
CONTENT: 100% Polyester, Inherently FR
WIDTH: 124"
REPEAT: 0"/0"
RAILROADED: Yes

Fabrication to be in accordance with IHG standards as stated in the FF&E Construction and Specification Guidelines and as follows:

NOTES:

1. Refer to image below for fabric.
2. Refer to SG-604 for drapery fabrication. Refer to SG-604A (C) for side panel fabric.
3. Fabric must be of contract quality and suitable for commercial use.
4. Fabricator to verify all site conditions, dimensions, materials required for installation, and confirm fabric yardages.
5. Per manufacturer, fabric meets the following: Passes NFPA 701.
6. Products must meet or exceed all applicable state & local codes.
7. Fabric must be treated for fire retardancy or meet applicable fire codes.
- 8. Manufacturer to ship all excess fabric to property for attic stock.**
9. No products shall infringe on any third party patents, copyrights, trademarks or other intellectual property rights.



Not to Scale / Not for Color / Design Intent Only

QUANTITY: TBD

UNIT COST: \$ TBD

TOTAL COST: \$ TBD

ISSUE DATE:
8/01/11

REVISION DATE:

REV. NO:

SPEC NO:

SG – 604B (C)

All orders must be marked as specified by IHG. All installed fabrics, upholstery, carpet, wallcovering, and other finish materials must meet local fire codes and regulations. Manufacturer must provide flame certificate to owner/purchaser at time order is shipped. Fabricator and/or installer must confirm the exact quantities required. All substitutions must be approved by IHG prior to ordering. Manufacturers must provide maintenance instructions. All shop drawings, finish samples, artwork and/or strike-offs must be submitted to IHG, for approval prior to production.