

**Candlewood Suites – Standardized Room Decor
Nest and Harbour Schemes – Guestroom**

InterContinental Hotels Group

Design & Construction
Three Ravinia Drive, Suite 100

AREA: Bedroom

MANUFACTURER:

Fabricut
Attn: Elizabeth Hassell
9303 East 46th Street
Tulsa, OK 74145
P: 800-999-5005 x 6314
F: 918-665-1177
E: elizabeth.hassell@fabricut.com

REP FIRM:

Cindy Royals
P: 770-792-7156
E: Cindy.Royals@Fabricut.com

SPEC NO: CG-500

DESCRIPTION: King Decorative Half Coverlet Fabrication

FINISHED SIZE: Approx. 111"W x 49" L
Drop to be 17.5" from top of mattress.
(Decorative Half Coverlet to fall 1" below box spring)
Standard Mattress size: 76" W x 80" L x 12" H

Fabrication to be in accordance with IHG Brand Standards, IHG Bedding Preambles, and as follows:

NOTES:

1. Refer to CG-500A for top fabric, CG-500B for lining and banding fabric and CG-500C for inter-liner fabric.
2. Construction: Decorative half coverlet consists of top fabric, lining and banding fabric fully encasing Custom IHG 7361 Inter-liner. Decorative Half Coverlet is fully sewn on all four edges with True Lock stitch serger (no quilt stitching is visible). Edge treatment to be a finished 2" wide band (CW-500B) on both sides of coverlet (folded around edges) with body of coverlet (top fabric, lining, and inter-liner) inserted into banding the full 2" width so that the banding is the same continuous thickness on all edges. Banding should be sewn with 8-9 stitches per inch with the stitch line positioned 1/8" from the inside edge (some variance may occur at bell corners). Two top corners of the decorative half coverlet to be square mitred corners of banding. Two bottom (foot) corners of the decorative half coverlet to be bell-shaped by cutting a radius starting at approximately 17" (both sides) from the 90 degree angle at the corner.
3. Label: Decorative half coverlet to receive a tag with size, washing instructions, and "sewn in USA" attached on the lining side at approximately 25" from top corner on side drop.
4. Decorative Half Coverlet fabrication, fabric, and inter-liner to be of contract quality and suitable for commercial use.
5. Fabric must be pattern matched at any and all seams.
6. Fabricator to verify all site conditions, bed dimensions, materials required, and fabric yardages prior to construction.
7. Refer to drawings for location.

QUANTITY: TBD

UNIT COST: \$ TBD

TOTAL COST: \$ TBD

ISSUE DATE:

1/23/12

REVISION DATE:

4/25/12

REV. NO:

1

SPEC NO:

CG-500

All orders must be marked as specified by IHG. All installed fabrics, upholstery, carpet, wallcovering, and other finish materials must meet local fire codes and regulations. Manufacturer must provide flame certificate to owner/purchaser at time order is shipped. Fabricator and/or installer must confirm the exact quantities required. All substitutions must be approved by IHG prior to ordering. Manufacturers must provide maintenance instructions. All shop drawings, finish samples, artwork and/or strike-offs must be submitted to IHG, for approval prior to production.

**Candlewood Suites – Standardized Room Decor
Harbour Scheme – Guestroom**

InterContinental Hotels Group

Design & Construction
Three Ravinia Drive, Suite 100
Atlanta, GA 30346

AREA: Bedroom

MANUFACTURER:

Fabricut
Attn: Elizabeth Hassell
9303 East 46th Street
Tulsa, OK 74145
P: 800-999-5005 x 6314
F: 918-665-1177
E: elizabeth.hassell@fabricut.com

REP FIRM:

Cindy Royals
P: 770-792-7156
E: Cindy.Royals@Fabricut.com

SPEC NO: CG-500A (H)

DESCRIPTION: King Decorative Half Coverlet top fabric

FABRIC:

Pattern: Custom Leinbach
Color: Stone
Content: 100% FR Polyester
Base Cloth: Tucson with StainSmart
Weight: 18 oz. / lin. yd.
Width: 126"
Repeat: 25" V / 1.8" H
Railroaded: Yes
Codes: Passes NFPA 701 Inherently
Finish: StainSmart

Fabrication to be in accordance with IHG standards as stated in the FF&E Construction and Specification Guidelines and as follows:

NOTES:

1. Refer to image below for fabric. Fabric must be of contract quality and suitable for commercial use.
2. Refer to CG-500 for fabrication. Refer to CG-500B (H) for lining fabric.
3. Products must meet or exceed all applicable state & local codes.
4. Fabricator to verify all site conditions, bed dimensions, materials required, and fabric yardages.
5. Manufacturer to ship all excess fabric to property for attic stock.
6. Fabric must be treated for fire retardancy or meet applicable fire codes.
7. No products shall infringe on any third party patents, copyrights, trademarks or other intellectual property rights.



Not for Color / Not to Scale / Design Intent Only

QUANTITY: TBD

UNIT COST: \$ TBD

TOTAL COST: \$ TBD

ISSUE DATE:
1/23/12

REVISION DATE:

REV. NO:

SPEC NO:
CG-500A (H)

All orders must be marked as specified by IHG. All installed fabrics, upholstery, carpet, wallcovering, and other finish materials must meet local fire codes and regulations. Manufacturer must provide flame certificate to owner/purchaser at time order is shipped. Fabricator and/or installer must confirm the exact quantities required. All substitutions must be approved by IHG prior to ordering. Manufacturers must provide maintenance instructions. All shop drawings, finish samples, artwork and/or strike-offs must be submitted to IHG, for approval prior to production.

Candlewood Suites – Standardized Room Decor
Harbour Scheme – Guestroom

InterContinental Hotels Group

Design & Construction
Three Ravinia Drive, Suite 100
Atlanta, GA 30346

AREA: Bedroom

MANUFACTURER:

Fabricut
Attn: Elizabeth Hassell
9303 East 46th Street
Tulsa, OK 74145
P: 800-999-5005 x 6314
F: 918-665-1177
E: elizabeth.hassell@fabricut.com

REP FIRM:

Cindy Royals
P: 770-792-7156
E: Cindy.Royals@Fabricut.com

SPEC NO: CG-500B (H)

DESCRIPTION: King Decorative Half Coverlet Lining Fabric

FABRIC:

Pattern: Andan Texture
Color: Custom 2018
Content: 100% FR Polyester
Base Cloth: Tucson with Stain Smart
Weight: 18 oz. / lin. yd.
Width: 126"
Repeat: N/A
Railroaded: Yes
Codes: Passes NFPA 701 Inherently
Finish: StainSmart

Fabrication to be in accordance with IHG Brand Standards, IHG Bedding preambles, and Specification Guidelines as follows:

NOTES:

1. Refer to image below for lining fabric. Fabric must be of contract quality and suitable for commercial use.
2. Products must meet or exceed all applicable state & local codes.
3. Fabricator to verify all site conditions, bed dimensions, materials required, and fabric yardages.
4. Refer to CG-500 for fabrication. Refer to CG-500A (H) for top fabric.
5. Manufacturer to ship all excess fabric to property for attic stock.
6. Fabric must be treated for fire retardancy or meet applicable fire codes.
7. No products shall infringe on any third party patents, copyrights, trademarks or other intellectual property rights.



Not for Color / Not to Scale / Design Intent Only

QUANTITY: TBD

UNIT COST: \$ TBD

TOTAL COST: \$ TBD

ISSUE DATE:
1/23/12

REVISION DATE:

REV. NO:

SPEC NO:
CG-500B (H)

All orders must be marked as specified by IHG. All installed fabrics, upholstery, carpet, wallcovering, and other finish materials must meet local fire codes and regulations. Manufacturer must provide flame certificate to owner/purchaser at time order is shipped. Fabricator and/or installer must confirm the exact quantities required. All substitutions must be approved by IHG prior to ordering. Manufacturers must provide maintenance instructions. All shop drawings, finish samples, artwork and/or strike-offs must be submitted to IHG, for approval prior to production.

**Candlewood Suites – Standardized Room Decor
Nest and Harbour Schemes – Guestroom**

InterContinental Hotels Group

Design & Construction
Three Ravinia Drive, Suite 100

AREA: Bedroom

MANUFACTURER:

EE Sewing, Inc.
33155 S. 4320 Rd.
Big Cabin, OK 74332
P: 918-783-5343
F: 918-783-5718

REP FIRM:

SPEC NO: CG-500C

DESCRIPTION: King Decorative Half Coverlet Inter-liner Fabric

NAME: Custom IHG 7361 Quilted Inter-liner

COLOR: White

CONTENT: Top & Bottom Casing Construction: A blend of 70/30 polyester cotton fibers in a 68/37 weave.
Polyester Fill: 5 ounces per 48" x 36" proprietary blend of resin coated polyester fibers.

CONSTRUCTION: Top and bottom casing is quilted with a double variegated box pattern, 7-8 stitches per inch using a lock stitch machine.

Fabrication to be in accordance with IHG Brand Standards, IHG Bedding Preambles, and as follows:

NOTES:

1. All components must be of contract quality and suitable for commercial use.
2. Refer to CG-500 and Candlewood Bedding Preamble for decorative half coverlet fabrication.
3. Products must meet or exceed all applicable state & local codes.
4. Manufacturer to ship all excess fabric to property for attic stock.
5. Fabric must be treated for fire retardancy or meet applicable fire codes.
6. No products shall infringe on any third party patents, copyrights, trademarks or other intellectual property rights.

QUANTITY: TBD

UNIT COST: \$ TBD

TOTAL COST: \$ TBD

ISSUE DATE:
1/23/12

REVISION DATE:

REV. NO:

SPEC NO:

CG-500C

All orders must be marked as specified by IHG. All installed fabrics, upholstery, carpet, wallcovering, and other finish materials must meet local fire codes and regulations. Manufacturer must provide flame certificate to owner/purchaser at time order is shipped. Fabricator and/or installer must confirm the exact quantities required. All substitutions must be approved by IHG prior to ordering. Manufacturers must provide maintenance instructions. All shop drawings, finish samples, artwork and/or strike-offs must be submitted to IHG, for approval prior to production.

Candlewood Suites – Standardized Room Decor
Nest and Harbour Schemes – Guestroom

InterContinental Hotels Group

Design & Construction
Three Ravinia Drive, Suite 100
Atlanta, GA 30346

AREA: Bedroom

MANUFACTURER:

Fabriquilt
Attn: Barry Oltsik
901 East 14th Avenue
North Kansas City, MO 64116
P: 816-421-2000
F: 816-471-2853
E: barry@fabri-quilt.com

REP FIRM:

SPEC NO: CG-501

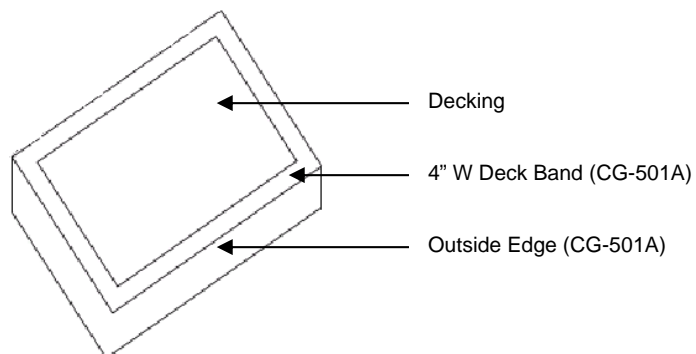
DESCRIPTION: King Boxspring Cover

FINISHED SIZE: Approximately 76" x 80 x 12" (W x L x H) typical
(Actual dimensions must be field verified due to size variations of mattresses)

Fabrication to be in accordance with IHG standards as stated in the FF&E Construction and Specification Guidelines and as follows. See Staybridge Suite Bedding Preamble for more detail.

NOTES:

1. Refer to CG-501A for decorative boxspring cover fabric (drop fabric).
2. Product to be of contract quality and suitable for commercial use.
3. Products must meet or exceed all applicable state & local codes.
4. Drops should be approximately 3" longer than actual box spring drop to allow adequate wrap under the boxspring. Top cover to be 50/50 white polyester/cotton decking used in conjunction with 4" wide fabric deck bands out of drop fabric. Polyester/cotton decking to have a 170 thread count min. Bottom Edge Detail: 1" turned lock stitched hem with 1/2" elastic around all 4 sides of boxspring. Cover to fit snugly on drop on all four sides of boxspring.
5. Fabricator to verify all site conditions, dimensions, materials required for installation, and confirm fabric yardages.
6. Boxspring construction: Refer to Candlewood Suites Bedding Preamble.
7. No products shall infringe on any third party patents, copyrights, trademarks or other intellectual property rights.



QUANTITY: TBD

UNIT COST: \$ TBD

TOTAL COST: \$ TBD

ISSUE DATE:

10/21/11

REVISION DATE:

REV. NO:

SPEC NO:

CG-501

All orders must be marked as specified by IHG. All installed fabrics, upholstery, carpet, wallcovering, and other finish materials must meet local fire codes and regulations. Manufacturer must provide flame certificate to owner/purchaser at time order is shipped. Fabricator and/or installer must confirm the exact quantities required. All substitutions must be approved by IHG prior to ordering. Manufacturers must provide maintenance instructions. All shop drawings, finish samples, artwork and/or strike-offs must be submitted to IHG, for approval prior to production.

Candlewood Suites – Standardized Room Decor
Harbour Scheme – Guestroom

InterContinental Hotels Group

Design & Construction
Three Ravinia Drive, Suite 100
Atlanta, GA 30346

AREA: Bedroom

MANUFACTURER:

Fabricut
Attn: Elizabeth Hassell
9303 East 46th Street
Tulsa, OK 74145
P: 800-999-5005 x 6314
F: 918-665-1177
E: elizabeth.hassell@fabricut.com

REP FIRM:

Cindy Royals
P: 770-792-7156
E: Cindy.Royals@Fabricut.com

SPEC NO: CG-501A (H)

DESCRIPTION: Fabric at Boxspring Cover

Pattern: Andan Texture
Color: Custom 2018
Content: 100% FR Polyester
Base Cloth: Tucson with Stain Smart
Weight: 18 oz. / lin. yd.
Width: 126"
Repeat: N/A
Railroaded: Yes
Codes: Passes NFPA 701 Inherently
Finish: StainSmart

Fabrication to be in accordance with IHG standards as stated in the FF&E Construction and Specification Guidelines and as follows:

NOTES:

1. Refer to image below for boxspring cover fabric. Fabric must be of contract quality and suitable for commercial use.
2. Fabricator to verify all site conditions, dimensions, materials required for installation, and confirm fabric yardages.
3. Products must meet or exceed all applicable state & local codes.
4. Refer to CG-501 and Candlewood Bedding Preamble for fabrication.
5. Manufacturer to ship all excess fabric to property for attic stock.
6. Fabric must be treated for fire retardancy or meet applicable fire codes.
7. No products shall infringe on any third party patents, copyrights, trademarks or other intellectual property rights.



Not for Color / Not to Scale / Design Intent Only

QUANTITY: TBD

UNIT COST: \$ TBD

TOTAL COST: \$ TBD

ISSUE DATE:

10/21/11

REVISION DATE:

REV. NO:

SPEC NO:

CG-501A (H)

All orders must be marked as specified by IHG. All installed fabrics, upholstery, carpet, wallcovering, and other finish materials must meet local fire codes and regulations. Manufacturer must provide flame certificate to owner/purchaser at time order is shipped. Fabricator and/or installer must confirm the exact quantities required. All substitutions must be approved by IHG prior to ordering. Manufacturers must provide maintenance instructions. All shop drawings, finish samples, artwork and/or strike-offs must be submitted to IHG, for approval prior to production.

Candlewood Suites – Standardized Room Decor
Nest and Harbour Schemes – Guestroom

InterContinental Hotels Group

Design & Construction
Three Ravinia Drive, Suite 100
Atlanta, GA 30346

AREA: Guestroom

MANUFACTURER:

Fabriquilt
Attn: Barry Oltsik
901 East 14th Avenue
North Kansas City, MO 64116
P: 816-421-2000
F: 816-471-2853
E: barry@fabri-quilt.com

REP FIRM:

SPEC NO:

CG-502

DESCRIPTION:

Accent Throw Pillow at Bed

MODEL / STYLE:

Custom Accent Pillow with Faux Flange

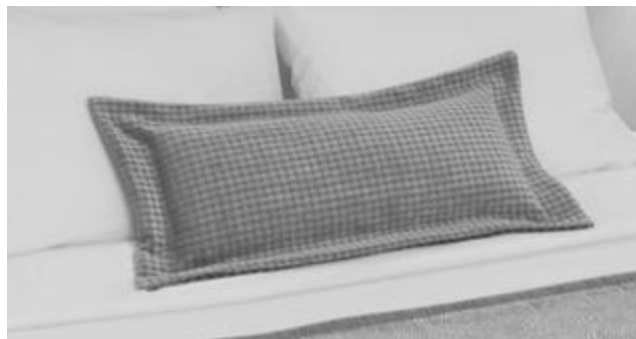
DIMENSIONS:

Body of Pillow: 36"W x 10.5"H, plus 2" wide faux flange
Overall: 40"W x 14.5"H

Fabrication to be in accordance with IHG standards as stated in the FF&E Construction and Specification Guidelines and as follows:

NOTES:

1. Refer to images below for design intent. Refer to CG-502A for pillow/flange fabric.
2. Pillow and fabrication to be of contract quality and suitable for commercial use.
3. Products must meet or exceed all applicable state & local codes.
4. No products shall infringe on any third party patents, copyrights, trademarks or other intellectual property rights.
5. Custom accent pillow to have 2" wide faux flange on all sides.
6. Fabricator to confirm fabric yardages.
7. Fabric must be pattern matched at all seams.
8. Insert: 11.5 oz polyester fiber in 50% poly / 50% cotton cover (**pillow to be fully stuffed**).
9. Full-length synthetic zipper closure to be hidden in body edge length.
10. Refer to plans for location.



Not to Scale / Not for Color / Design Intent Only

QUANTITY: TBD

UNIT COST: \$ TBD

TOTAL COST: \$ TBD

ISSUE DATE:

10/21/11

REVISION DATE:

7/17/12

REV. NO:

SPEC NO:

CG-502

All orders must be marked as specified by IHG. All installed fabrics, upholstery, carpet, wallcovering, and other finish materials must meet local fire codes and regulations. Manufacturer must provide flame certificate to owner/purchaser at time order is shipped. Fabricator and/or installer must confirm the exact quantities required. All substitutions must be approved by IHG prior to ordering. Manufacturers must provide maintenance instructions. All shop drawings, finish samples, artwork and/or strike-offs must be submitted to IHG, for approval prior to production.

Candlewood Suites – Standardized Room Decor
Harbour Scheme – Guestroom

InterContinental Hotels Group

Design & Construction
Three Ravinia Drive, Suite 100
Atlanta, GA 30346

AREA: Bedroom

MANUFACTURER:

Fabricut
Attn: Elizabeth Hassell
9303 East 46th Street
Tulsa, OK 74145
P: 800-999-5005 x 6314
F: 918-665-1177
E: elizabeth.hassell@fabricut.com

REP FIRM:

Cindy Royals
P: 770-792-7156
E: Cindy.Royals@Fabricut.com

SPEC NO: CG-502A (H)

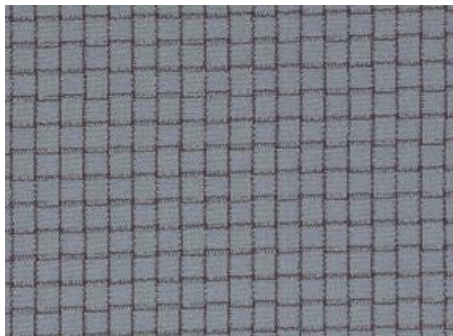
DESCRIPTION: Fabric at Bed Accent Pillow

Pattern: Custom Cattail / ADV
Color: Seaglass
Content: 100% FR Polyester
Base Cloth: Advantage
Weight: 12.14 oz. / lin. yd.
Width: 54"
Repeat: 0.5"V / 0.5"H
Railroaded: No
Codes: Passes NFPA 701 Inherently

Fabrication to be in accordance with IHG standards as stated in the FF&E Construction and Specification Guidelines and as follows:

NOTES:

1. Refer to image below for pillow fabric.
2. Fabric must be of contract quality and suitable for commercial use.
3. Fabricator to verify all site conditions, dimensions, materials required for installation, and confirm fabric yardages.
4. Products must meet or exceed all applicable state & local codes.
5. Refer to CG-502 for pillow fabrication.
6. Manufacturer to ship all excess fabric to property for attic stock.
7. Fabric must be treated for fire retardancy or meet applicable fire codes.
8. No products shall infringe on any third party patents, copyrights, trademarks or other intellectual property rights.



Not for Color / Not to Scale / Design Intent Only

QUANTITY: TBD

UNIT COST: \$ TBD

TOTAL COST: \$ TBD

ISSUE DATE:

10/21/11

REVISION DATE:

REV. NO:

SPEC NO:

CG-502A (H)

All orders must be marked as specified by IHG. All installed fabrics, upholstery, carpet, wallcovering, and other finish materials must meet local fire codes and regulations. Manufacturer must provide flame certificate to owner/purchaser at time order is shipped. Fabricator and/or installer must confirm the exact quantities required. All substitutions must be approved by IHG prior to ordering. Manufacturers must provide maintenance instructions. All shop drawings, finish samples, artwork and/or strike-offs must be submitted to IHG, for approval prior to production.

Candlewood Suites – Standardized Room Decor
Nest and Harbour Schemes – Guestroom

InterContinental Hotels Group

Design & Construction
Three Ravinia Drive, Suite 100
Atlanta, GA 30346

AREA: Bedroom

MANUFACTURER:

Sealy, Inc.
Attn: Chad Gunderson
P: 678-388-9529
F: 678-559-0407
E: sealyinfo@chadgunderson.com

REP FIRM:

SPEC NO: CG-503

DESCRIPTION: Bedset (King)

MODEL NO: Sealy Posturepedic “Candlewood Suites, Comforts of Home Plush”

DIMENSIONS: 76" x 80" x 11-1/2" (also available in 72" x 80")

DROPS: Mattress Only: 11-1/2"
Boxspring: 9"
Bed Base: 7-1/2" (typical)
Overall: 28" – Floor to Mattress Crown (including bed base)

(Dimensions are +/- 1/2")

CONSTRUCTION:

Quilted Top: Staytrue™ Quilt Top
1" SuperSoft SealyFoam®, ½" SealyFoam®, 1oz. Flameguard FiberLux™ Fiber

Ticking: Designer Damask

Comfort Layers: StayTrue™ - ½" SealyFoam®, 2" x 1" Pressure Point Materials, Mesh Insulator

Innerspring: 736 PostureTech (Queen Coil Count)

Support System: UniCased™ Edge and Base (with Support Channels)

Box Spring: Shock Absorber™ Plus

Warranty: 10/10 non-prorated

Fabrication to be in accordance with IHG standards as stated in the FF&E Construction and Specification Guidelines and as follows:

NOTES:

1. Refer to image below for bedset.
2. Product to be of contract quality and suitable for commercial use.
3. Products must meet or exceed all applicable state & local codes.
4. Pillowtop option is available as an upgrade upon request. Contact Sealy directly for detail/specifications on the Pillowtop version.

QUANTITY: TBD

UNIT COST: \$ TBD

TOTAL COST: \$ TBD

ISSUE DATE:

10/21/11

REVISION DATE:

REV. NO:

SPEC NO:

CG-503

All orders must be marked as specified by IHG. All installed fabrics, upholstery, carpet, wallcovering, and other finish materials must meet local fire codes and regulations. Manufacturer must provide flame certificate to owner/purchaser at time order is shipped. Fabricator and/or installer must confirm the exact quantities required. All substitutions must be approved by IHG prior to ordering. Manufacturers must provide maintenance instructions. All shop drawings, finish samples, artwork and/or strike-offs must be submitted to IHG, for approval prior to production.

AREA: Bedroom

Candlewood Suites Comforts of Home CSS
The Fundamentals of Comfortable Sleep



ADDITIONAL FEATURES



Metal Corner Guards protect box spring edges.

PLUSH

STAYTRUE™ QUILT TOP

- 1.0 oz. FlameGuard™ FiberLux® Fiber
- 1" SuperSoft SealyFoam®
- ½" SealyFoam®

STAYTRUE™ COMFORT LAYERS

- ½" SealyFoam®
- 2" x 1" Pressure Point Materials
- Mesh Insulator

INNERSPRING:

736 PostureTech®
 (Queen coil count)

SUPPORT SYSTEM:

UniCased™ Edge & Base
 (with Support Channels)

BOX SPRING:

Shock Abzorb™ Plus

WARRANTY:

10/10 non-prorated

DROP MEASUREMENTS – HEIGHT

Bed Frame*	7½"
Box Spring**	9"
Mattress Only (bottom to crown)	11½"
Set [including frame] (Floor to mattress crown)	27¾"

* Standard bed frame height

** Box Spring also available in 5.5" and 7" heights

All Sealy Posturepedic CSS sleep systems meet the new 16 CFR 1633 (CAL TB-603) federal flammability standard.



QUANTITY: TBD

UNIT COST: \$ TBD

TOTAL COST: \$ TBD

ISSUE DATE:
10/21/11

REVISION DATE:

REV. NO:

SPEC NO:

CG-503

All orders must be marked as specified by IHG. All installed fabrics, upholstery, carpet, wallcovering, and other finish materials must meet local fire codes and regulations. Manufacturer must provide flame certificate to owner/purchaser at time order is shipped. Fabricator and/or installer must confirm the exact quantities required. All substitutions must be approved by IHG prior to ordering. Manufacturers must provide maintenance instructions. All shop drawings, finish samples, artwork and/or strike-offs must be submitted to IHG, for approval prior to production.

Candlewood Suites – Standardized Room Decor
Nest and Harbour Schemes – Guestroom

InterContinental Hotels Group

Design & Construction
Three Ravinia Drive, Suite 100

AREA: Bedroom

MANUFACTURER:

Fabricut
Attn: Elizabeth Hassell
9303 East 46th Street
Tulsa, OK 74145
P: 800-999-5005 x 6314
F: 918-665-1177
E: elizabeth.hassell@fabricut.com

REP FIRM:

Cindy Royals
P: 770-792-7156
E: Cindy.Royals@Fabricut.com

SPEC NO: CG-504

DESCRIPTION: Queen Decorative Half Coverlet Fabrication

FINISHED SIZE: Approx. 95"W x 49" L
Drop to be 17.5" from top of mattress.
(Decorative Half Coverlet to fall 1" below box spring)
Standard Mattress size: 60" W x 80" L x 12" H

Fabrication to be in accordance with IHG Brand Standards, IHG Bedding Preambles, and as follows:

NOTES:

1. Refer to CG-504A for top fabric, CG-504B for lining and banding fabric and CG-504C for inter-liner fabric.
2. Construction: Decorative half coverlet consists of top fabric, lining and banding fabric fully encasing Custom IHG 7361 Inter-liner. Decorative Half Coverlet is fully sewn on all four edges with True Lock stitch serger (no quilt stitching is visible). Edge treatment to be a finished 2" wide band (CG-504B) on both sides of coverlet (folded around edges) with body of coverlet (top fabric, lining, and inter-liner) inserted into banding the full 2" width so that the banding is the same continuous thickness on all edges. Banding should be sewn with 8-9 stitches per inch with the stitch line positioned 1/8" from the inside edge (some variance may occur at bell corners). Two top corners of the decorative half coverlet to be square mitred corners of banding. Two bottom (foot) corners of the decorative half coverlet to be bell-shaped by cutting a radius starting at approximately 17" (both sides) from the 90 degree angle at the corner.
3. Label: Decorative half coverlet to receive a tag with size, washing instructions, and "sewn in USA" attached on the lining side at approximately 25" from top corner on side drop.
4. Decorative Half Coverlet fabrication, fabric, and inter-liner to be of contract quality and suitable for commercial use.
5. Fabric must be pattern matched at any and all seams.
6. Fabricator to verify all site conditions, bed dimensions, materials required, and fabric yardages prior to construction.
7. Refer to drawings for location.

QUANTITY: TBD

UNIT COST: \$ TBD

TOTAL COST: \$ TBD

ISSUE DATE:

1/23/12

REVISION DATE:

4/25/12

REV. NO:

1

SPEC NO:

CG-504

All orders must be marked as specified by IHG. All installed fabrics, upholstery, carpet, wallcovering, and other finish materials must meet local fire codes and regulations. Manufacturer must provide flame certificate to owner/purchaser at time order is shipped. Fabricator and/or installer must confirm the exact quantities required. All substitutions must be approved by IHG prior to ordering. Manufacturers must provide maintenance instructions. All shop drawings, finish samples, artwork and/or strike-offs must be submitted to IHG, for approval prior to production.

**Candlewood Suites – Standardized Room Decor
Harbour Scheme – Guestroom**

InterContinental Hotels Group

Design & Construction
Three Ravinia Drive, Suite 100
Atlanta, GA 30346

AREA: Bedroom

MANUFACTURER:

Fabricut
Attn: Elizabeth Hassell
9303 East 46th Street
Tulsa, OK 74145
P: 800-999-5005 x 6314
F: 918-665-1177
E: elizabeth.hassell@fabricut.com

REP FIRM:

Cindy Royals
P: 770-792-7156
E: Cindy.Royals@Fabricut.com

SPEC NO: CG-504A (H)

DESCRIPTION: Queen Decorative Half Coverlet top fabric

FABRIC:

Pattern: Custom Leinbach
Color: Stone
Content: 100% FR Polyester
Base Cloth: Tucson with StainSmart
Weight: 18 oz. / lin. yd.
Width: 126"
Repeat: 25" V / 1.8" H
Railroaded: Yes
Codes: Passes NFPA 701 Inherently
Finish: StainSmart

Fabrication to be in accordance with IHG standards as stated in the FF&E Construction and Specification Guidelines and as follows:

NOTES:

1. Refer to image below for fabric. Fabric must be of contract quality and suitable for commercial use.
2. Refer to CG-504 for fabrication. Refer to CG-504B (H) for lining fabric.
3. Products must meet or exceed all applicable state & local codes.
4. Fabricator to verify all site conditions, bed dimensions, materials required, and fabric yardages.
5. Manufacturer to ship all excess fabric to property for attic stock.
6. Fabric must be treated for fire retardancy or meet applicable fire codes.
7. No products shall infringe on any third party patents, copyrights, trademarks or other intellectual property rights.



Not for Color / Not to Scale / Design Intent Only

QUANTITY: TBD

UNIT COST: \$ TBD

TOTAL COST: \$ TBD

ISSUE DATE:
1/23/12

REVISION DATE:

REV. NO:

SPEC NO:
CG-504A (H)

All orders must be marked as specified by IHG. All installed fabrics, upholstery, carpet, wallcovering, and other finish materials must meet local fire codes and regulations. Manufacturer must provide flame certificate to owner/purchaser at time order is shipped. Fabricator and/or installer must confirm the exact quantities required. All substitutions must be approved by IHG prior to ordering. Manufacturers must provide maintenance instructions. All shop drawings, finish samples, artwork and/or strike-offs must be submitted to IHG, for approval prior to production.

**Candlewood Suites – Standardized Room Decor
Harbour Scheme – Guestroom**

InterContinental Hotels Group

Design & Construction
Three Ravinia Drive, Suite 100
Atlanta, GA 30346

AREA: Bedroom

MANUFACTURER:

Fabricut
Attn: Elizabeth Hassell
9303 East 46th Street
Tulsa, OK 74145
P: 800-999-5005 x 6314
F: 918-665-1177
E: elizabeth.hassell@fabricut.com

REP FIRM:

Cindy Royals
P: 770-792-7156
E: Cindy.Royals@Fabricut.com

SPEC NO: CG-504B (H)

DESCRIPTION: Queen Decorative Half Coverlet Lining Fabric

FABRIC:

Pattern: Andan Texture
Color: Custom 2018
Content: 100% FR Polyester
Base Cloth: Tucson with Stain Smart
Weight: 18 oz. / lin. yd.
Width: 126"
Repeat: N/A
Railroaded: Yes
Codes: Passes NFPA 701 Inherently
Finish: StainSmart

Fabrication to be in accordance with IHG Brand Standards, IHG Bedding preambles, and Specification Guidelines as follows:

NOTES:

1. Refer to image below for lining fabric. Fabric must be of contract quality and suitable for commercial use.
2. Products must meet or exceed all applicable state & local codes.
3. Fabricator to verify all site conditions, bed dimensions, materials required, and fabric yardages.
4. Refer to CG-504 for fabrication. Refer to CG-504A (H) for top fabric.
5. Manufacturer to ship all excess fabric to property for attic stock.
6. Fabric must be treated for fire retardancy or meet applicable fire codes.
7. No products shall infringe on any third party patents, copyrights, trademarks or other intellectual property rights.



Not for Color / Not to Scale / Design Intent Only

QUANTITY: TBD

UNIT COST: \$ TBD

TOTAL COST: \$ TBD

ISSUE DATE:
1/23/12

REVISION DATE:

REV. NO:

SPEC NO:
CG-504B (H)

All orders must be marked as specified by IHG. All installed fabrics, upholstery, carpet, wallcovering, and other finish materials must meet local fire codes and regulations. Manufacturer must provide flame certificate to owner/purchaser at time order is shipped. Fabricator and/or installer must confirm the exact quantities required. All substitutions must be approved by IHG prior to ordering. Manufacturers must provide maintenance instructions. All shop drawings, finish samples, artwork and/or strike-offs must be submitted to IHG, for approval prior to production.

**Candlewood Suites – Standardized Room Decor
Nest and Harbour Schemes – Guestroom**

InterContinental Hotels Group

Design & Construction
Three Ravinia Drive, Suite 100

AREA: Bedroom

MANUFACTURER:

EE Sewing, Inc.
33155 S. 4320 Rd.
Big Cabin, OK 74332
P: 918-783-5343
F: 918-783-5718

REP FIRM:

SPEC NO: CG-504C

DESCRIPTION: Queen Decorative Half Coverlet Inter-liner Fabric

NAME: Custom IHG 7361 Quilted Inter-liner

COLOR: White

**CONTENT: Top & Bottom Casing Construction: A blend of 70/30 polyester cotton fibers in a 68/37 weave.
Polyester Fill: 5 ounces per 48" x 36" proprietary blend of resin coated polyester fibers.**

CONSTRUCTION: Top and bottom casing is quilted with a double variegated box pattern, 7-8 stitches per inch using a lock stitch machine.

Fabrication to be in accordance with IHG Brand Standards, IHG Bedding Preambles, and as follows:

NOTES:

1. All components must be of contract quality and suitable for commercial use.
2. Refer to CG-504 and Candlewood Bedding Preamble for decorative half coverlet fabrication.
3. Products must meet or exceed all applicable state & local codes.
4. Manufacturer to ship all excess fabric to property for attic stock.
5. Fabric must be treated for fire retardancy or meet applicable fire codes.
6. No products shall infringe on any third party patents, copyrights, trademarks or other intellectual property rights.

QUANTITY: TBD

UNIT COST: \$ TBD

TOTAL COST: \$ TBD

ISSUE DATE:
1/23/12

REVISION DATE:

REV. NO:

SPEC NO:
CG-504C

All orders must be marked as specified by IHG. All installed fabrics, upholstery, carpet, wallcovering, and other finish materials must meet local fire codes and regulations. Manufacturer must provide flame certificate to owner/purchaser at time order is shipped. Fabricator and/or installer must confirm the exact quantities required. All substitutions must be approved by IHG prior to ordering. Manufacturers must provide maintenance instructions. All shop drawings, finish samples, artwork and/or strike-offs must be submitted to IHG, for approval prior to production.

Candlewood Suites – Standardized Room Decor
Nest and Harbour Schemes – Guestroom

InterContinental Hotels Group

Design & Construction
Three Ravinia Drive, Suite 100
Atlanta, GA 30346

AREA: Bedroom

MANUFACTURER:

Fabriquilt
Attn: Barry Oltsik
901 East 14th Avenue
North Kansas City, MO 64116
P: 816-421-2000
F: 816-471-2853
E: barry@fabri-quilt.com

REP FIRM:

SPEC NO:

CG-505

DESCRIPTION:

Queen Boxspring Cover

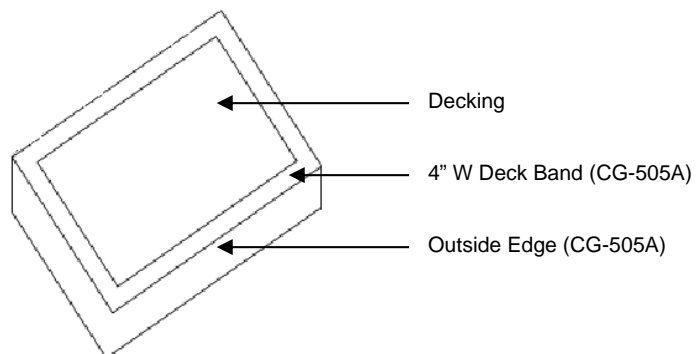
FINISHED SIZE:

Approximately 60" x 80 x 12" (W x L x H) typical
(Actual dimensions must be field verified due to size variations of mattresses)

Fabrication to be in accordance with IHG standards as stated in the FF&E Construction and Specification Guidelines and as follows. See Staybridge Suite Bedding Preamble for more detail.

NOTES:

1. Refer to CG-505A for decorative boxspring cover fabric (drop fabric).
2. Product to be of contract quality and suitable for commercial use.
3. Products must meet or exceed all applicable state & local codes.
4. Drops should be approximately 3" longer than actual box spring drop to allow adequate wrap under the boxspring. Top cover to be 50/50 white polyester/cotton decking used in conjunction with 4" wide fabric deck bands out of drop fabric. Polyester/cotton decking to have a 170 thread count min. Bottom Edge Detail: 1" turned lock stitched hem with 1/2" elastic around all 4 sides of boxspring. Cover to fit snugly on drop on all four sides of boxspring.
5. Fabricator to verify all site conditions, dimensions, materials required for installation, and confirm fabric yardages.
6. Boxspring construction: Refer to Candlewood Suites Bedding Preamble.
7. No products shall infringe on any third party patents, copyrights, trademarks or other intellectual property rights.



QUANTITY: TBD

UNIT COST: \$ TBD

TOTAL COST: \$ TBD

ISSUE DATE:

10/21/11

REVISION DATE:

REV. NO:

SPEC NO:

CG-505

All orders must be marked as specified by IHG. All installed fabrics, upholstery, carpet, wallcovering, and other finish materials must meet local fire codes and regulations. Manufacturer must provide flame certificate to owner/purchaser at time order is shipped. Fabricator and/or installer must confirm the exact quantities required. All substitutions must be approved by IHG prior to ordering. Manufacturers must provide maintenance instructions. All shop drawings, finish samples, artwork and/or strike-offs must be submitted to IHG, for approval prior to production.

**Candlewood Suites – Standardized Room Decor
Harbour Scheme – Guestroom**

InterContinental Hotels Group

Design & Construction
Three Ravinia Drive, Suite 100
Atlanta, GA 30346

AREA: Bedroom

MANUFACTURER:

Fabricut
Attn: Elizabeth Hassell
9303 East 46th Street
Tulsa, OK 74145
P: 800-999-5005 x 6314
F: 918-665-1177
E: elizabeth.hassell@fabricut.com

REP FIRM:

Cindy Royals
P: 770-792-7156
E: Cindy.Royals@Fabricut.com

SPEC NO: CG-505A (H)

DESCRIPTION: Fabric at Boxspring Cover

DUVET FABRIC:

Pattern: Andan Texture
Color: Custom 2018
Content: 100% FR Polyester
Base Cloth: Tucson with Stain Smart
Weight: 18 oz. / lin. yd.
Width: 126"
Repeat: N/A
Railroaded: Yes
Codes: Passes NFPA 701 Inherently
Finish: StainSmart

Fabrication to be in accordance with IHG standards as stated in the FF&E Construction and Specification Guidelines and as follows:

NOTES:

1. Refer to image below for boxspring cover fabric.
2. Fabric must be of contract quality and suitable for commercial use.
3. Fabricator to verify all site conditions, dimensions, materials required for installation, and confirm fabric yardages.
4. Products must meet or exceed all applicable state & local codes.
5. Refer to CG-505 for fabrication.
6. Manufacturer to ship all excess fabric to property for attic stock.
7. Fabric must be treated for fire retardancy or meet applicable fire codes.
8. No products shall infringe on any third party patents, copyrights, trademarks or other intellectual property rights.



Not for Color / Not to Scale / Design Intent Only

QUANTITY: TBD

UNIT COST: \$ TBD

TOTAL COST: \$ TBD

ISSUE DATE:

10/21/11

REVISION DATE:

REV. NO:

SPEC NO:

CG-505A (H)

All orders must be marked as specified by IHG. All installed fabrics, upholstery, carpet, wallcovering, and other finish materials must meet local fire codes and regulations. Manufacturer must provide flame certificate to owner/purchaser at time order is shipped. Fabricator and/or installer must confirm the exact quantities required. All substitutions must be approved by IHG prior to ordering. Manufacturers must provide maintenance instructions. All shop drawings, finish samples, artwork and/or strike-offs must be submitted to IHG, for approval prior to production.

Candlewood Suites – Standardized Room Decor
Nest and Harbour Schemes – Guestroom

InterContinental Hotels Group

Design & Construction
Three Ravinia Drive, Suite 100
Atlanta, GA 30346

AREA: Bedroom

MANUFACTURER:

Sealy, Inc.
Attn: Chad Gunderson
P: 678-388-9529
F: 678-559-0407
E: sealyinfo@chadgunderson.com

REP FIRM:

SPEC NO: CG-507

DESCRIPTION: Bedset (Queen)

MODEL NO: Sealy Posturepedic “Candlewood Suites, Comforts of Home Plush”

DIMENSIONS: 60" x 80" x 11-1/2"

DROPS: Mattress Only: 11-1/2"
Boxspring: 9"
Bed Base: 7-1/2" (typical)
Overall: 28" – Floor to Mattress Crown (including bed base)

(Dimensions are +/- 1/2")

CONSTRUCTION:

Quilted Top: Staytrue™ Quilt Top
1" SuperSoft SealyFoam®, ½" SealyFoam®, 1oz. Flameguard FiberLux™ Fiber

Ticking: Designer Damask

Comfort Layers: StayTrue™ - ½" SealyFoam®, 2" x 1" Pressure Point Materials, Mesh Insulator

Innerspring: 736 PostureTech (Queen Coil Count)

Support System: UniCased™ Edge and Base (with Support Channels)

Box Spring: Shock Absorber™ Plus

Warranty: 10/10 non-prorated

Fabrication to be in accordance with IHG standards as stated in the FF&E Construction and Specification Guidelines and as follows:

NOTES:

1. Refer to image below for bedset.
2. Product to be of contract quality and suitable for commercial use.
3. Products must meet or exceed all applicable state & local codes.
4. Pillowtop option is available as an upgrade upon request. Contact Sealy directly for detail/specifications on the Pillowtop version.

QUANTITY: TBD

UNIT COST: \$ TBD

TOTAL COST: \$ TBD

ISSUE DATE:

10/21/11

REVISION DATE:

REV. NO:

SPEC NO:

CG-507

All orders must be marked as specified by IHG. All installed fabrics, upholstery, carpet, wallcovering, and other finish materials must meet local fire codes and regulations. Manufacturer must provide flame certificate to owner/purchaser at time order is shipped. Fabricator and/or installer must confirm the exact quantities required. All substitutions must be approved by IHG prior to ordering. Manufacturers must provide maintenance instructions. All shop drawings, finish samples, artwork and/or strike-offs must be submitted to IHG, for approval prior to production.

AREA: Bedroom

Candlewood Suites Comforts of Home CSS
The Fundamentals of Comfortable Sleep



ADDITIONAL FEATURES



Metal Corner Guards protect box spring edges.

PLUSH

- STAYTRUE™ QUILT TOP**
- 1.0 oz. FlameGuard™ FiberLux® Fiber
 - 1" SuperSoft SealyFoam®
 - ½" SealyFoam®
- STAYTRUE™ COMFORT LAYERS**
- ½" SealyFoam®
 - 2" x 1" Pressure Point Materials
 - Mesh Insulator
- INNERSPRING:**
- 736 PostureTech® (Queen coil count)
- SUPPORT SYSTEM:**
- UniCased™ Edge & Base (with Support Channels)
- BOX SPRING:**
- Shock Abzorb™ Plus
- WARRANTY:**
- 10/10 non-prorated

DROP MEASUREMENTS – HEIGHT

Bed Frame*	7½"
Box Spring**	9"
Mattress Only (bottom to crown)	11½"
Set [including frame] (Floor to mattress crown)	27¾"

* Standard bed frame height

** Box Spring also available in 5.5" and 7" heights

All Sealy Posturepedic CSS sleep systems meet the new 16 CFR 1633 (CAL TB-603) federal flammability standard.



QUANTITY: TBD

UNIT COST: \$ TBD

TOTAL COST: \$ TBD

ISSUE DATE:
10/21/11

REVISION DATE:

REV. NO:

SPEC NO:

CG-507

All orders must be marked as specified by IHG. All installed fabrics, upholstery, carpet, wallcovering, and other finish materials must meet local fire codes and regulations. Manufacturer must provide flame certificate to owner/purchaser at time order is shipped. Fabricator and/or installer must confirm the exact quantities required. All substitutions must be approved by IHG prior to ordering. Manufacturers must provide maintenance instructions. All shop drawings, finish samples, artwork and/or strike-offs must be submitted to IHG, for approval prior to production.

Candlewood Suites – Standardized Room Decor
Nest and Harbour Schemes – Guestroom

InterContinental Hotels Group

Design & Construction
Three Ravinia Drive, Suite 100

AREA: Bedroom

MANUFACTURER:

Fabricut
Attn: Elizabeth Hassell
9303 East 46th Street
Tulsa, OK 74145
P: 800-999-5005 x 6314
F: 918-665-1177
E: elizabeth.hassell@fabricut.com

REP FIRM:

Cindy Royals
P: 770-792-7156
E: Cindy.Royals@Fabricut.com

SPEC NO: CG-508

DESCRIPTION: Double Decorative Half Coverlet Fabrication

FINISHED SIZE: Approx. 89"W x 49" L
Drop to be 17.5" from top of mattress.
(Decorative Half Coverlet to fall 1" below box spring)
Standard Mattress size: 54" W x 80" L x 12" H

Fabrication to be in accordance with IHG Brand Standards, IHG Bedding Preambles, and as follows:

NOTES:

1. Refer to CG-508A for top fabric, CG-508B for lining and banding fabric and CG-508C for inter-liner fabric.
2. Construction: Decorative half coverlet consists of top fabric, lining and banding fabric fully encasing Custom IHG 7361 Inter-liner. Decorative Half Coverlet is fully sewn on all four edges with True Lock stitch serger (no quilt stitching is visible). Edge treatment to be a finished 2" wide band (CG-508B) on both sides of coverlet (folded around edges) with body of coverlet (top fabric, lining, and inter-liner) inserted into banding the full 2" width so that the banding is the same continuous thickness on all edges. Banding should be sewn with 8-9 stitches per inch with the stitch line positioned 1/8" from the inside edge (some variance may occur at bell corners). Two top corners of the decorative half coverlet to be square mitred corners of banding. Two bottom (foot) corners of the decorative half coverlet to be bell-shaped by cutting a radius starting at approximately 17" (both sides) from the 90 degree angle at the corner.
3. Label: Decorative half coverlet to receive a tag with size, washing instructions, and "sewn in USA" attached on the lining side at approximately 25" from top corner on side drop.
4. Decorative Half Coverlet fabrication, fabric, and inter-liner to be of contract quality and suitable for commercial use.
5. Fabric must be pattern matched at any and all seams.
6. Fabricator to verify all site conditions, bed dimensions, materials required, and fabric yardages prior to construction.
7. Refer to drawings for location.

QUANTITY: TBD

UNIT COST: \$ TBD

TOTAL COST: \$ TBD

ISSUE DATE:
1/23/12

REVISION DATE:
4/25/12

REV. NO:
1

SPEC NO:
CG-508

All orders must be marked as specified by IHG. All installed fabrics, upholstery, carpet, wallcovering, and other finish materials must meet local fire codes and regulations. Manufacturer must provide flame certificate to owner/purchaser at time order is shipped. Fabricator and/or installer must confirm the exact quantities required. All substitutions must be approved by IHG prior to ordering. Manufacturers must provide maintenance instructions. All shop drawings, finish samples, artwork and/or strike-offs must be submitted to IHG, for approval prior to production.

**Candlewood Suites – Standardized Room Decor
Harbour Scheme – Guestroom**

InterContinental Hotels Group

Design & Construction
Three Ravinia Drive, Suite 100
Atlanta, GA 30346

AREA: Bedroom

MANUFACTURER:

Fabricut
Attn: Elizabeth Hassell
9303 East 46th Street
Tulsa, OK 74145
P: 800-999-5005 x 6314
F: 918-665-1177
E: elizabeth.hassell@fabricut.com

REP FIRM:

Cindy Royals
P: 770-792-7156
E: Cindy.Royals@Fabricut.com

SPEC NO: CG-508A (H)

DESCRIPTION: Double Decorative Half Coverlet top fabric

FABRIC:

Pattern: Custom Leinbach
Color: Stone
Content: 100% FR Polyester
Base Cloth: Tucson with StainSmart
Weight: 18 oz. / lin. yd.
Width: 126"
Repeat: 25" V / 1.8" H
Railroaded: Yes
Codes: Passes NFPA 701 Inherently
Finish: StainSmart

Fabrication to be in accordance with IHG standards as stated in the FF&E Construction and Specification Guidelines and as follows:

NOTES:

1. Refer to image below for fabric. Fabric must be of contract quality and suitable for commercial use.
2. Refer to CG-508 for fabrication. Refer to CG-508B (H) for lining fabric.
3. Products must meet or exceed all applicable state & local codes.
4. Fabricator to verify all site conditions, bed dimensions, materials required, and fabric yardages.
5. Manufacturer to ship all excess fabric to property for attic stock.
6. Fabric must be treated for fire retardancy or meet applicable fire codes.
7. No products shall infringe on any third party patents, copyrights, trademarks or other intellectual property rights.



Not for Color / Not to Scale / Design Intent Only

QUANTITY: TBD

UNIT COST: \$ TBD

TOTAL COST: \$ TBD

ISSUE DATE:
1/23/12

REVISION DATE:

REV. NO:

SPEC NO:
CG-508A (H)

All orders must be marked as specified by IHG. All installed fabrics, upholstery, carpet, wallcovering, and other finish materials must meet local fire codes and regulations. Manufacturer must provide flame certificate to owner/purchaser at time order is shipped. Fabricator and/or installer must confirm the exact quantities required. All substitutions must be approved by IHG prior to ordering. Manufacturers must provide maintenance instructions. All shop drawings, finish samples, artwork and/or strike-offs must be submitted to IHG, for approval prior to production.

Candlewood Suites – Standardized Room Decor
Harbour Scheme – Guestroom

InterContinental Hotels Group

Design & Construction
Three Ravinia Drive, Suite 100
Atlanta, GA 30346

AREA: Bedroom

MANUFACTURER:

Fabricut
Attn: Elizabeth Hassell
9303 East 46th Street
Tulsa, OK 74145
P: 800-999-5005 x 6314
F: 918-665-1177
E: elizabeth.hassell@fabricut.com

REP FIRM:

Cindy Royals
P: 770-792-7156
E: Cindy.Royals@Fabricut.com

SPEC NO: CG-508B (H)

DESCRIPTION: Double Decorative Half Coverlet Lining Fabric

FABRIC:

Pattern: Andan Texture
Color: Custom 2018
Content: 100% FR Polyester
Base Cloth: Tucson with Stain Smart
Weight: 18 oz. / lin. yd.
Width: 126"
Repeat: N/A
Railroaded: Yes
Codes: Passes NFPA 701 Inherently
Finish: StainSmart

Fabrication to be in accordance with IHG Brand Standards, IHG Bedding preambles, and Specification Guidelines as follows:

NOTES:

1. Refer to image below for lining fabric. Fabric must be of contract quality and suitable for commercial use.
2. Products must meet or exceed all applicable state & local codes.
3. Fabricator to verify all site conditions, bed dimensions, materials required, and fabric yardages.
4. Refer to CG-508 for fabrication. Refer to CG-508A (H) for top fabric.
5. Manufacturer to ship all excess fabric to property for attic stock.
6. Fabric must be treated for fire retardancy or meet applicable fire codes.
7. No products shall infringe on any third party patents, copyrights, trademarks or other intellectual property rights.



Not for Color / Not to Scale / Design Intent Only

QUANTITY: TBD

UNIT COST: \$ TBD

TOTAL COST: \$ TBD

ISSUE DATE:
1/23/12

REVISION DATE:

REV. NO:

SPEC NO:
CG-508B (H)

All orders must be marked as specified by IHG. All installed fabrics, upholstery, carpet, wallcovering, and other finish materials must meet local fire codes and regulations. Manufacturer must provide flame certificate to owner/purchaser at time order is shipped. Fabricator and/or installer must confirm the exact quantities required. All substitutions must be approved by IHG prior to ordering. Manufacturers must provide maintenance instructions. All shop drawings, finish samples, artwork and/or strike-offs must be submitted to IHG, for approval prior to production.

**Candlewood Suites – Standardized Room Decor
Nest and Harbour Schemes – Guestroom**

InterContinental Hotels Group

Design & Construction
Three Ravinia Drive, Suite 100

AREA: Bedroom

MANUFACTURER:

EE Sewing, Inc.
33155 S. 4320 Rd.
Big Cabin, OK 74332
P: 918-783-5343
F: 918-783-5718

REP FIRM:

SPEC NO: CG-508C

DESCRIPTION: Double Decorative Half Coverlet Inter-liner Fabric

NAME: Custom IHG 7361 Quilted Inter-liner

COLOR: White

CONTENT: Top & Bottom Casing Construction: A blend of 70/30 polyester cotton fibers in a 68/37 weave.
Polyester Fill: 5 ounces per 48" x 36" proprietary blend of resin coated polyester fibers.

CONSTRUCTION: Top and bottom casing is quilted with a double variegated box pattern, 7-8 stitches per inch using a lock stitch machine.

Fabrication to be in accordance with IHG Brand Standards, IHG Bedding Preambles, and as follows:

NOTES:

1. All components must be of contract quality and suitable for commercial use.
2. Refer to CG-508 and Candlewood Bedding Preamble for decorative half coverlet fabrication.
3. Products must meet or exceed all applicable state & local codes.
4. Manufacturer to ship all excess fabric to property for attic stock.
5. Fabric must be treated for fire retardancy or meet applicable fire codes.
6. No products shall infringe on any third party patents, copyrights, trademarks or other intellectual property rights.

QUANTITY: TBD

UNIT COST: \$ TBD

TOTAL COST: \$ TBD

ISSUE DATE:
1/23/12

REVISION DATE:

REV. NO:

SPEC NO:
CG-508C

All orders must be marked as specified by IHG. All installed fabrics, upholstery, carpet, wallcovering, and other finish materials must meet local fire codes and regulations. Manufacturer must provide flame certificate to owner/purchaser at time order is shipped. Fabricator and/or installer must confirm the exact quantities required. All substitutions must be approved by IHG prior to ordering. Manufacturers must provide maintenance instructions. All shop drawings, finish samples, artwork and/or strike-offs must be submitted to IHG, for approval prior to production.

Candlewood Suites – Standardized Room Decor
Nest & Harbour Schemes – Guestroom

InterContinental Hotels Group

Design & Construction
Three Ravinia Drive, Suite 100
Atlanta, GA 30346

AREA: Bedroom

MANUFACTURER:

Fabriquilt
Attn: Barry Oltsik
901 East 14th Avenue
North Kansas City, MO 64116
P: 816-421-2000
F: 816-471-2853
E: barry@fabri-quilt.com

REP FIRM:

SPEC NO:

CG-510

DESCRIPTION:

King Bed Skirt Fabrication

Note: Bedskirts are to be used in conjunction with open metal bed frames in ADA rooms and in existing IHG properties going through the Brand Bedding Refresh. For new hotels or hotels going through a PIP or renovation, Bed Skirts are to be used only in ADA rooms with the required bed frame. All other beds will require the specified Bed Box and Box Spring Cover. July 2012

FINISHED SIZE:

Approximately 76" x 80 x 16" (W x L x H) typical
(Actual dimensions must be field verified due to size variations of box springs.)

Fabrication to be in accordance with IHG Brand Standards, IHG Bedding Preambles, and as follows:

NOTES:

1. Refer to CG-510A(N) or CG-510A(H) for face fabric.
2. Construction Style: Tailored bed skirt without pleats.
3. Lining: White FR (to meet current NFPA 701) 100% polyester continuous filament material.
4. Decking: Fabric to be 50/50 Polycotton Blend, color: white. Include 3" wide platform strips of face fabric at edge of platform decking.
5. Corners: Two corners to be open with false inverted pleat.
6. Bottom edge (hem) of bed skirt to be ½" max above top of finished floor surface. Note: Fabricator is responsible for ensuring the skirt is sized for the installed box springs so the hem does not drag on the floor surface. Ideally the hem should barely touch the floor surface.
7. Fabric must be pattern matched at any and all seams.
8. Fabricator to verify all site conditions, bed dimensions, materials required, and fabric yardages prior to construction.
9. Refer to drawings for location.

QUANTITY: TBD

UNIT COST: \$ TBD

TOTAL COST: \$ TBD

ISSUE DATE:
7/11/12

REVISION DATE:

REV. NO:

SPEC NO:
CG-510

All orders must be marked as specified by IHG. All installed fabrics, upholstery, carpet, wallcovering, and other finish materials must meet local fire codes and regulations. Manufacturer must provide flame certificate to owner/purchaser at time order is shipped. Fabricator and/or installer must confirm the exact quantities required. All substitutions must be approved by IHG prior to ordering. Manufacturers must provide maintenance instructions. All shop drawings, finish samples, artwork and/or strike-offs must be submitted to IHG, for approval prior to production.

Candlewood Suites – Standardized Room Decor
Harbour Scheme – Guestroom

InterContinental Hotels Group

Design & Construction
Three Ravinia Drive, Suite 100
Atlanta, GA 30346

AREA: Bedroom

MANUFACTURER:

Fabricut
Attn: Elizabeth Hassell
9303 East 46th Street
Tulsa, OK 74145
P: 800-999-5005 x 6314
F: 918-665-1177
E: elizabeth.hassell@fabricut.com

REP FIRM:

Cindy Royals
P: 770-792-7156
E: Cindy.Royals@Fabricut.com

SPEC NO: CG-510A (H)

DESCRIPTION: Fabric at Bed Skirt

Pattern: Andan Texture
Color: Custom 2018
Content: 100% FR Polyester
Base Cloth: Tucson with Stain Smart
Weight: 18 oz. / lin. yd.
Width: 126"
Repeat: N/A
Railroaded: Yes
Codes: Passes NFPA 701 Inherently
Finish: StainSmart

Fabrication to be in accordance with IHG standards as stated in the FF&E Construction and Specification Guidelines and as follows:

NOTES:

1. Refer to image below for bed skirt fabric. Fabric must be of contract quality and suitable for commercial use.
2. Fabricator to verify all site conditions, dimensions, materials required for installation, and confirm fabric yardages.
3. Products must meet or exceed all applicable state & local codes.
4. Refer to CG-510 and Candlewood Bedding Preamble for fabrication.
5. Manufacturer to ship all excess fabric to property for attic stock.
6. Fabric must be treated for fire retardancy or meet applicable fire codes.
7. No products shall infringe on any third party patents, copyrights, trademarks or other intellectual property rights.



Not for Color / Not to Scale / Design Intent Only

QUANTITY: TBD

UNIT COST: \$ TBD

TOTAL COST: \$ TBD

ISSUE DATE:
7/12/12

REVISION DATE:

REV. NO:

SPEC NO:
CG-510A (H)

All orders must be marked as specified by IHG. All installed fabrics, upholstery, carpet, wallcovering, and other finish materials must meet local fire codes and regulations. Manufacturer must provide flame certificate to owner/purchaser at time order is shipped. Fabricator and/or installer must confirm the exact quantities required. All substitutions must be approved by IHG prior to ordering. Manufacturers must provide maintenance instructions. All shop drawings, finish samples, artwork and/or strike-offs must be submitted to IHG, for approval prior to production.

Candlewood Suites – Standardized Room Decor
Nest & Harbour Schemes – Guestroom

InterContinental Hotels Group

Design & Construction
Three Ravinia Drive, Suite 100
Atlanta, GA 30346

AREA: Bedroom

MANUFACTURER:

Fabriquilt
Attn: Barry Oltsik
901 East 14th Avenue
North Kansas City, MO 64116
P: 816-421-2000
F: 816-471-2853
E: barry@fabri-quilt.com

REP FIRM:

SPEC NO: CG-511

DESCRIPTION: Queen Bed Skirt Fabrication

Note: Bedskirts are to be used in conjunction with open metal bed frames in ADA rooms and in existing IHG properties going through the Brand Bedding Refresh. For new hotels or hotels going through a PIP or renovation, Bed Skirts are to be used only in ADA rooms with the required bed frame. All other beds will require the specified Bed Box and Box Spring Cover. July 2012

FINISHED SIZE: Approximately 60" x 80 x 16" (W x L x H) typical
(Actual dimensions must be field verified due to size variations of box springs.)

Fabrication to be in accordance with IHG Brand Standards, IHG Bedding Preambles, and as follows:

NOTES:

1. Refer to CG-511A(N) or CG-511A(H) for face fabric.
2. Construction Style: Tailored bed skirt without pleats.
3. Lining: White FR (to meet current NFPA 701) 100% polyester continuous filament material.
4. Decking: Fabric to be 50/50 Polycotton Blend, color: white. Include 3" wide platform strips of face fabric at edge of platform decking.
5. Corners: Two corners to be open with false inverted pleat.
6. Bottom edge (hem) of bed skirt to be ½" max above top of finished floor surface. Note: Fabricator is responsible for ensuring the skirt is sized for the installed box springs so the hem does not drag on the floor surface. Ideally the hem should barely touch the floor surface.
7. Fabric must be pattern matched at any and all seams.
8. Fabricator to verify all site conditions, bed dimensions, materials required, and fabric yardages prior to construction.
9. Refer to drawings for location.

QUANTITY: TBD

UNIT COST: \$ TBD

TOTAL COST: \$ TBD

ISSUE DATE:
7/11/12

REVISION DATE:

REV. NO:

SPEC NO:
CG-511

All orders must be marked as specified by IHG. All installed fabrics, upholstery, carpet, wallcovering, and other finish materials must meet local fire codes and regulations. Manufacturer must provide flame certificate to owner/purchaser at time order is shipped. Fabricator and/or installer must confirm the exact quantities required. All substitutions must be approved by IHG prior to ordering. Manufacturers must provide maintenance instructions. All shop drawings, finish samples, artwork and/or strike-offs must be submitted to IHG, for approval prior to production.

**Candlewood Suites – Standardized Room Decor
Harbour Scheme – Guestroom**

InterContinental Hotels Group

Design & Construction
Three Ravinia Drive, Suite 100
Atlanta, GA 30346

AREA: Bedroom

MANUFACTURER:

Fabricut
Attn: Elizabeth Hassell
9303 East 46th Street
Tulsa, OK 74145
P: 800-999-5005 x 6314
F: 918-665-1177
E: elizabeth.hassell@fabricut.com

REP FIRM:

Cindy Royals
P: 770-792-7156
E: Cindy.Royals@Fabricut.com

SPEC NO: CG-511A (H)

DESCRIPTION: Fabric at Bed Skirt

Pattern: Andan Texture
Color: Custom 2018
Content: 100% FR Polyester
Base Cloth: Tucson with Stain Smart
Weight: 18 oz. / lin. yd.
Width: 126"
Repeat: N/A
Railroaded: Yes
Codes: Passes NFPA 701 Inherently
Finish: StainSmart

Fabrication to be in accordance with IHG standards as stated in the FF&E Construction and Specification Guidelines and as follows:

NOTES:

1. Refer to image below for bed skirt fabric. Fabric must be of contract quality and suitable for commercial use.
2. Fabricator to verify all site conditions, dimensions, materials required for installation, and confirm fabric yardages.
3. Products must meet or exceed all applicable state & local codes.
4. Refer to CG-511 and Candlewood Bedding Preamble for fabrication.
5. Manufacturer to ship all excess fabric to property for attic stock.
6. Fabric must be treated for fire retardancy or meet applicable fire codes.
7. No products shall infringe on any third party patents, copyrights, trademarks or other intellectual property rights.



Not for Color / Not to Scale / Design Intent Only

QUANTITY: TBD

UNIT COST: \$ TBD

TOTAL COST: \$ TBD

ISSUE DATE:
7/12/12

REVISION DATE:

REV. NO:

SPEC NO:
CG-511A (H)

All orders must be marked as specified by IHG. All installed fabrics, upholstery, carpet, wallcovering, and other finish materials must meet local fire codes and regulations. Manufacturer must provide flame certificate to owner/purchaser at time order is shipped. Fabricator and/or installer must confirm the exact quantities required. All substitutions must be approved by IHG prior to ordering. Manufacturers must provide maintenance instructions. All shop drawings, finish samples, artwork and/or strike-offs must be submitted to IHG, for approval prior to production.

Candlewood Suites – Standardized Room Decor
Nest & Harbour Schemes – Guestroom

InterContinental Hotels Group

Design & Construction
Three Ravinia Drive, Suite 100
Atlanta, GA 30346

AREA: Bedroom

MANUFACTURER:

Fabriquilt
Attn: Barry Oltsik
901 East 14th Avenue
North Kansas City, MO 64116
P: 816-421-2000
F: 816-471-2853
E: barry@fabri-quilt.com

REP FIRM:

SPEC NO:

CG-512

DESCRIPTION:

Double Bed Skirt Fabrication

Note: Bedskirts are to be used in conjunction with open metal bed frames in ADA rooms and in existing IHG properties going through the Brand Bedding Refresh. For new hotels or hotels going through a PIP or renovation, Bed Skirts are to be used only in ADA rooms with the required bed frame. All other beds will require the specified Bed Box and Box Spring Cover. July 2012

FINISHED SIZE:

Approximately 54" x 80 x 16" (W x L x H) typical
(Actual dimensions must be field verified due to size variations of box springs.)

Fabrication to be in accordance with IHG Brand Standards, IHG Bedding Preambles, and as follows:

NOTES:

1. Refer to CG-512A(N) or CG-512A(H) for face fabric.
2. Construction Style: Tailored bed skirt without pleats.
3. Lining: White FR (to meet current NFPA 701) 100% polyester continuous filament material.
4. Decking: Fabric to be 50/50 Polycotton Blend, color: white. Include 3" wide platform strips of face fabric at edge of platform decking.
5. Corners: Two corners to be open with false inverted pleat.
6. Bottom edge (hem) of bed skirt to be ½" max above top of finished floor surface. Note: Fabricator is responsible for ensuring the skirt is sized for the installed box springs so the hem does not drag on the floor surface. Ideally the hem should barely touch the floor surface.
7. Fabric must be pattern matched at any and all seams.
8. Fabricator to verify all site conditions, bed dimensions, materials required, and fabric yardages prior to construction.
9. Refer to drawings for location.

QUANTITY: TBD

UNIT COST: \$ TBD

TOTAL COST: \$ TBD

ISSUE DATE:
7/11/12

REVISION DATE:

REV. NO:

SPEC NO:
CG-512

All orders must be marked as specified by IHG. All installed fabrics, upholstery, carpet, wallcovering, and other finish materials must meet local fire codes and regulations. Manufacturer must provide flame certificate to owner/purchaser at time order is shipped. Fabricator and/or installer must confirm the exact quantities required. All substitutions must be approved by IHG prior to ordering. Manufacturers must provide maintenance instructions. All shop drawings, finish samples, artwork and/or strike-offs must be submitted to IHG, for approval prior to production.

**Candlewood Suites – Standardized Room Decor
Harbour Scheme – Guestroom**

InterContinental Hotels Group

Design & Construction
Three Ravinia Drive, Suite 100
Atlanta, GA 30346

AREA: Bedroom

MANUFACTURER:

Fabricut
Attn: Elizabeth Hassell
9303 East 46th Street
Tulsa, OK 74145
P: 800-999-5005 x 6314
F: 918-665-1177
E: elizabeth.hassell@fabricut.com

REP FIRM:

Cindy Royals
P: 770-792-7156
E: Cindy.Royals@Fabricut.com

SPEC NO: CG-512A (H)

DESCRIPTION: Fabric at Bed Skirt

Pattern: Andan Texture
Color: Custom 2018
Content: 100% FR Polyester
Base Cloth: Tucson with Stain Smart
Weight: 18 oz. / lin. yd.
Width: 126"
Repeat: N/A
Railroaded: Yes
Codes: Passes NFPA 701 Inherently
Finish: StainSmart

Fabrication to be in accordance with IHG standards as stated in the FF&E Construction and Specification Guidelines and as follows:

NOTES:

1. Refer to image below for bed skirt fabric. Fabric must be of contract quality and suitable for commercial use.
2. Fabricator to verify all site conditions, dimensions, materials required for installation, and confirm fabric yardages.
3. Products must meet or exceed all applicable state & local codes.
4. Refer to CG-512 and Candlewood Bedding Preamble for fabrication.
5. Manufacturer to ship all excess fabric to property for attic stock.
6. Fabric must be treated for fire retardancy or meet applicable fire codes.
7. No products shall infringe on any third party patents, copyrights, trademarks or other intellectual property rights.



Not for Color / Not to Scale / Design Intent Only

QUANTITY: TBD

UNIT COST: \$ TBD

TOTAL COST: \$ TBD

ISSUE DATE:
7/12/12

REVISION DATE:

REV. NO:

SPEC NO:
CG-512A (H)

All orders must be marked as specified by IHG. All installed fabrics, upholstery, carpet, wallcovering, and other finish materials must meet local fire codes and regulations. Manufacturer must provide flame certificate to owner/purchaser at time order is shipped. Fabricator and/or installer must confirm the exact quantities required. All substitutions must be approved by IHG prior to ordering. Manufacturers must provide maintenance instructions. All shop drawings, finish samples, artwork and/or strike-offs must be submitted to IHG, for approval prior to production.