

**Candlewood Suites – Standardized Room Decor  
Nest and Harbour Schemes – Guestroom**

**InterContinental Hotels Group**

Design & Construction  
Three Ravinia Drive, Suite 100

AREA: Bedroom

---

**MANUFACTURER:**

Fabricut  
Attn: Elizabeth Hassell  
9303 East 46th Street  
Tulsa, OK 74145  
P: 800-999-5005 x 6314  
F: 918-665-1177  
E: [elizabeth.hassell@fabricut.com](mailto:elizabeth.hassell@fabricut.com)

**REP FIRM:**

Cindy Royals  
P: 770-792-7156  
E: [Cindy.Royals@Fabricut.com](mailto:Cindy.Royals@Fabricut.com)

---

**SPEC NO:**

**CG-500**

**DESCRIPTION:**

King Decorative Half Coverlet Fabrication

**FINISHED SIZE:**

Approx. 108"W x 40" L  
Drop to be 16" from top of mattress.  
(Decorative Half Coverlet to fall 1" below box spring)  
Standard Mattress size: 76" W x 80" L x 12" H

Fabrication to be in accordance with IHG Brand Standards, IHG Bedding Preambles, and as follows:

**NOTES:**

1. Refer to CG-500A for top fabric, CG-500B for lining and banding fabric and CG-500C for inter-liner fabric.
2. Construction: Decorative half coverlet consists of top fabric, lining and banding fabric fully encasing Custom IHG 7361 Inter-liner. Decorative Half Coverlet is fully sewn on all four edges with True Lock stitch serger (no quilt stitching is visible). Edge treatment to be a finished 2" wide band (CW-500B) on both sides of coverlet (folded around edges) with body of coverlet (top fabric, lining, and inter-liner) inserted into banding the full 2" width so that the banding is the same continuous thickness on all edges. Banding should be sewn with 8-9 stitches per inch with the stitch line positioned 1/8" from the inside edge (some variance may occur at bell corners). Two top corners of the decorative half coverlet to be square mitred corners of banding. Two bottom (foot) corners of the decorative half coverlet to be bell-shaped by cutting a radius starting at approximately 17" (both sides) from the 90 degree angle at the corner.
3. Label: Decorative half coverlet to receive a tag with size, washing instructions, and "sewn in USA" attached on the lining side at approximately 25" from top corner on side drop.
4. Decorative Half Coverlet fabrication, fabric, and inter-liner to be of contract quality and suitable for commercial use.
5. Fabric must be pattern matched at any and all seams.
6. Fabricator to verify all site conditions, bed dimensions, materials required, and fabric yardages prior to construction.
7. Refer to drawings for location.

**QUANTITY:** TBD

**UNIT COST:** \$ TBD

**TOTAL COST:** \$ TBD

---

**ISSUE DATE:**

1/23/12

**REVISION DATE:**

**REV. NO:**

**SPEC NO:**

**CG-500**

---

All orders must be marked as specified by IHG. All installed fabrics, upholstery, carpet, wallcovering, and other finish materials must meet local fire codes and regulations. Manufacturer must provide flame certificate to owner/purchaser at time order is shipped. Fabricator and/or installer must confirm the exact quantities required. All substitutions must be approved by IHG prior to ordering. Manufacturers must provide maintenance instructions. All shop drawings, finish samples, artwork and/or strike-offs must be submitted to IHG, for approval prior to production.

**Candlewood Suites – Standardized Room Decor  
Harbour Scheme – Guestroom**

**InterContinental Hotels Group**

Design & Construction  
Three Ravinia Drive, Suite 100  
Atlanta, GA 30346

AREA: Bedroom

---

**MANUFACTURER:**

Fabricut  
Attn: Elizabeth Hassell  
9303 East 46th Street  
Tulsa, OK 74145  
P: 800-999-5005 x 6314  
F: 918-665-1177  
E: [elizabeth.hassell@fabricut.com](mailto:elizabeth.hassell@fabricut.com)

**REP FIRM:**

Cindy Royals  
P: 770-792-7156  
E: [Cindy.Royals@Fabricut.com](mailto:Cindy.Royals@Fabricut.com)

---

**SPEC NO: CG-500A (H)**

**DESCRIPTION: King Decorative Half Coverlet top fabric**

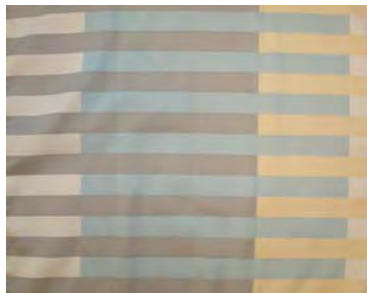
**FABRIC:**

Pattern: Custom Leinbach  
Color: Stone  
Content: 100% FR Polyester  
Base Cloth: Tucson with StainSmart  
Weight: 18 oz. / lin. yd.  
Width: 126"  
Repeat: 25" V / 1.8" H  
Railroaded: Yes  
Codes: Passes NFPA 701 Inherently  
Finish: StainSmart

Fabrication to be in accordance with IHG standards as stated in the FF&E Construction and Specification Guidelines and as follows:

**NOTES:**

1. Refer to image below for fabric. Fabric must be of contract quality and suitable for commercial use.
2. Refer to CG-500 for fabrication. Refer to CG-500B (H) for lining fabric.
3. Products must meet or exceed all applicable state & local codes.
4. Fabricator to verify all site conditions, bed dimensions, materials required, and fabric yardages.
5. Manufacturer to ship all excess fabric to property for attic stock.
6. Fabric must be treated for fire retardancy or meet applicable fire codes.
7. No products shall infringe on any third party patents, copyrights, trademarks or other intellectual property rights.



Not for Color / Not to Scale / Design Intent Only

**QUANTITY: TBD**

**UNIT COST: \$ TBD**

**TOTAL COST: \$ TBD**

---

**ISSUE DATE:**  
1/23/12

**REVISION DATE:**

**REV. NO:**

**SPEC NO:**  
**CG-500A (H)**

---

All orders must be marked as specified by IHG. All installed fabrics, upholstery, carpet, wallcovering, and other finish materials must meet local fire codes and regulations. Manufacturer must provide flame certificate to owner/purchaser at time order is shipped. Fabricator and/or installer must confirm the exact quantities required. All substitutions must be approved by IHG prior to ordering. Manufacturers must provide maintenance instructions. All shop drawings, finish samples, artwork and/or strike-offs must be submitted to IHG, for approval prior to production.

**Candlewood Suites – Standardized Room Decor**  
**Harbour Scheme – Guestroom**

**InterContinental Hotels Group**

Design & Construction  
Three Ravinia Drive, Suite 100  
Atlanta, GA 30346

AREA: Bedroom

---

**MANUFACTURER:**

Fabricut  
Attn: Elizabeth Hassell  
9303 East 46th Street  
Tulsa, OK 74145  
P: 800-999-5005 x 6314  
F: 918-665-1177  
E: [elizabeth.hassell@fabricut.com](mailto:elizabeth.hassell@fabricut.com)

**REP FIRM:**

Cindy Royals  
P: 770-792-7156  
E: [Cindy.Royals@Fabricut.com](mailto:Cindy.Royals@Fabricut.com)

---

**SPEC NO: CG-500B (H)**

**DESCRIPTION: King Decorative Half Coverlet Lining Fabric**

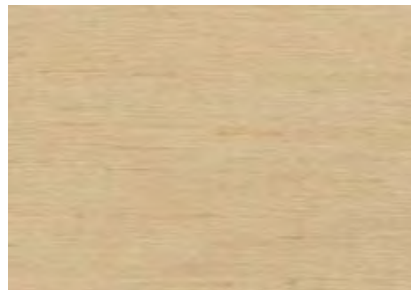
**FABRIC:**

Pattern: Andan Texture  
Color: Custom 2018  
Content: 100% FR Polyester  
Base Cloth: Tucson with Stain Smart  
Weight: 18 oz. / lin. yd.  
Width: 126"  
Repeat: N/A  
Railroaded: Yes  
Codes: Passes NFPA 701 Inherently  
Finish: StainSmart

Fabrication to be in accordance with IHG Brand Standards, IHG Bedding preambles, and Specification Guidelines as follows:

**NOTES:**

1. Refer to image below for lining fabric. Fabric must be of contract quality and suitable for commercial use.
2. Products must meet or exceed all applicable state & local codes.
3. Fabricator to verify all site conditions, bed dimensions, materials required, and fabric yardages.
4. Refer to CG-500 for fabrication. Refer to CG-500A (H) for top fabric.
5. Manufacturer to ship all excess fabric to property for attic stock.
6. Fabric must be treated for fire retardancy or meet applicable fire codes.
7. No products shall infringe on any third party patents, copyrights, trademarks or other intellectual property rights.



Not for Color / Not to Scale / Design Intent Only

**QUANTITY: TBD**

**UNIT COST: \$ TBD**

**TOTAL COST: \$ TBD**

---

**ISSUE DATE:**  
1/23/12

**REVISION DATE:**

**REV. NO:**

**SPEC NO:**  
**CG-500B (H)**

---

All orders must be marked as specified by IHG. All installed fabrics, upholstery, carpet, wallcovering, and other finish materials must meet local fire codes and regulations. Manufacturer must provide flame certificate to owner/purchaser at time order is shipped. Fabricator and/or installer must confirm the exact quantities required. All substitutions must be approved by IHG prior to ordering. Manufacturers must provide maintenance instructions. All shop drawings, finish samples, artwork and/or strike-offs must be submitted to IHG, for approval prior to production.

**Candlewood Suites – Standardized Room Decor  
Nest and Harbour Schemes – Guestroom**

**InterContinental Hotels Group**

Design & Construction  
Three Ravinia Drive, Suite 100

AREA: Bedroom

---

**MANUFACTURER:**

EE Sewing, Inc.  
33155 S. 4320 Rd.  
Big Cabin, OK 74332  
P: 918-783-5343  
F: 918-783-5718

**REP FIRM:**

---

**SPEC NO:**

**CG-500C**

**DESCRIPTION:**

King Decorative Half Coverlet Inter-liner Fabric

**NAME:**

Custom IHG 7361 Quilted Inter-liner

**COLOR:**

White

**CONTENT:**

Top & Bottom Casing Construction: A blend of 70/30 polyester cotton fibers in a 68/37 weave.

Polyester Fill: 5 ounces per 48" x 36" proprietary blend of resin coated polyester fibers.

**CONSTRUCTION:**

Top and bottom casing is quilted with a double variegated box pattern, 7-8 stitches per inch using a lock stitch machine.

Fabrication to be in accordance with IHG Brand Standards, IHG Bedding Preambles, and as follows:

**NOTES:**

1. All components must be of contract quality and suitable for commercial use.
2. Refer to CG-500 and Candlewood Bedding Preamble for decorative half coverlet fabrication.
3. Products must meet or exceed all applicable state & local codes.
4. Manufacturer to ship all excess fabric to property for attic stock.
5. Fabric must be treated for fire retardancy or meet applicable fire codes.
6. No products shall infringe on any third party patents, copyrights, trademarks or other intellectual property rights.

**QUANTITY:** TBD

**UNIT COST:** \$ TBD

**TOTAL COST:** \$ TBD

---

**ISSUE DATE:**

1/23/12

**REVISION DATE:**

**REV. NO:**

**SPEC NO:**

**CG-500C**

---

All orders must be marked as specified by IHG. All installed fabrics, upholstery, carpet, wallcovering, and other finish materials must meet local fire codes and regulations. Manufacturer must provide flame certificate to owner/purchaser at time order is shipped. Fabricator and/or installer must confirm the exact quantities required. All substitutions must be approved by IHG prior to ordering. Manufacturers must provide maintenance instructions. All shop drawings, finish samples, artwork and/or strike-offs must be submitted to IHG, for approval prior to production.

**Candlewood Suites – Standardized Room Decor  
Nest and Harbour Schemes – Guestroom**

**InterContinental Hotels Group**

Design & Construction  
Three Ravinia Drive, Suite 100  
Atlanta, GA 30346

AREA: Bedroom

**MANUFACTURER:**

Fabriquilt  
Attn: Barry Oltsik  
901 East 14<sup>th</sup> Avenue  
North Kansas City, MO 64116  
P: 816-421-2000  
F: 816-471-2853  
E: [barry@fabri-quilt.com](mailto:barry@fabri-quilt.com)

**REP FIRM:**

**SPEC NO:**

**CG-501**

**DESCRIPTION:**

King Boxspring Cover

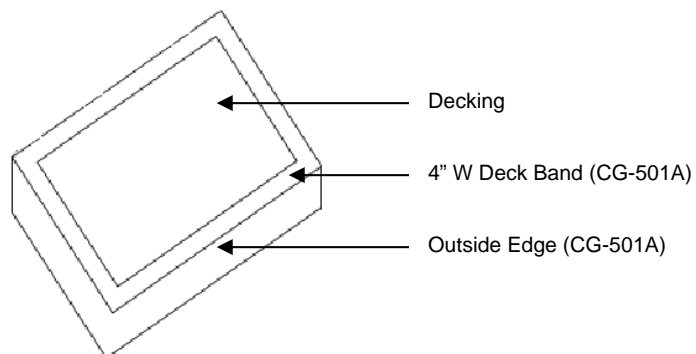
**FINISHED SIZE:**

Approximately 76" x 80 x 12" (W x L x H) typical  
(Actual dimensions must be field verified due to size variations of mattresses)

Fabrication to be in accordance with IHG standards as stated in the FF&E Construction and Specification Guidelines and as follows. See Staybridge Suite Bedding Preamble for more detail.

**NOTES:**

1. Refer to CG-501A for decorative boxspring cover fabric (drop fabric).
2. Product to be of contract quality and suitable for commercial use.
3. Products must meet or exceed all applicable state & local codes.
4. Drops should be approximately 3" longer than actual box spring drop to allow adequate wrap under the boxspring. Top cover to be 50/50 white polyester/cotton decking used in conjunction with 4" wide fabric deck bands out of drop fabric. Polyester/cotton decking to have a 170 thread count min. Bottom Edge Detail: 1" turned lock stitched hem with ½" elastic around all 4 sides of boxspring. Cover to fit snugly on drop on all four sides of boxspring.
5. Fabricator to verify all site conditions, dimensions, materials required for installation, and confirm fabric yardages.
6. Boxspring construction: Refer to Candlewood Suites Bedding Preamble.
7. No products shall infringe on any third party patents, copyrights, trademarks or other intellectual property rights.



**QUANTITY:** TBD

**UNIT COST:** \$ TBD

**TOTAL COST:** \$ TBD

**ISSUE DATE:**

10/21/11

**REVISION DATE:**

**REV. NO:**

**SPEC NO:**

**CG-501**

All orders must be marked as specified by IHG. All installed fabrics, upholstery, carpet, wallcovering, and other finish materials must meet local fire codes and regulations. Manufacturer must provide flame certificate to owner/purchaser at time order is shipped. Fabricator and/or installer must confirm the exact quantities required. All substitutions must be approved by IHG prior to ordering. Manufacturers must provide maintenance instructions. All shop drawings, finish samples, artwork and/or strike-offs must be submitted to IHG, for approval prior to production.

**Candlewood Suites – Standardized Room Decor**  
**Harbour Scheme – Guestroom**

**InterContinental Hotels Group**

Design & Construction  
Three Ravinia Drive, Suite 100  
Atlanta, GA 30346

AREA: Bedroom

---

**MANUFACTURER:**

Fabricut  
Attn: Elizabeth Hassell  
9303 East 46th Street  
Tulsa, OK 74145  
P: 800-999-5005 x 6314  
F: 918-665-1177  
E: [elizabeth.hassell@fabricut.com](mailto:elizabeth.hassell@fabricut.com)

**REP FIRM:**

Cindy Royals  
P: 770-792-7156  
E: [Cindy.Royals@Fabricut.com](mailto:Cindy.Royals@Fabricut.com)

---

**SPEC NO: CG-501A (H)**

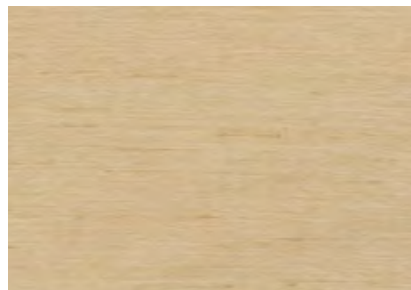
**DESCRIPTION: Fabric at Boxspring Cover**

**Pattern:** Andan Texture  
**Color:** Custom 2018  
**Content:** 100% FR Polyester  
**Base Cloth:** Tucson with Stain Smart  
**Weight:** 18 oz. / lin. yd.  
**Width:** 126"  
**Repeat:** N/A  
**Railroaded:** Yes  
**Codes:** Passes NFPA 701 Inherently  
**Finish:** StainSmart

Fabrication to be in accordance with IHG standards as stated in the FF&E Construction and Specification Guidelines and as follows:

**NOTES:**

1. Refer to image below for boxspring cover fabric. Fabric must be of contract quality and suitable for commercial use.
2. Fabricator to verify all site conditions, dimensions, materials required for installation, and confirm fabric yardages.
3. Products must meet or exceed all applicable state & local codes.
4. Refer to CG-501 and Candlewood Bedding Preamble for fabrication.
5. Manufacturer to ship all excess fabric to property for attic stock.
6. Fabric must be treated for fire retardancy or meet applicable fire codes.
7. No products shall infringe on any third party patents, copyrights, trademarks or other intellectual property rights.



Not for Color / Not to Scale / Design Intent Only

**QUANTITY:** TBD

**UNIT COST:** \$ TBD

**TOTAL COST:** \$ TBD

---

**ISSUE DATE:**

10/21/11

**REVISION DATE:**

**REV. NO:**

**SPEC NO:**

**CG-501A (H)**

---

All orders must be marked as specified by IHG. All installed fabrics, upholstery, carpet, wallcovering, and other finish materials must meet local fire codes and regulations. Manufacturer must provide flame certificate to owner/purchaser at time order is shipped. Fabricator and/or installer must confirm the exact quantities required. All substitutions must be approved by IHG prior to ordering. Manufacturers must provide maintenance instructions. All shop drawings, finish samples, artwork and/or strike-offs must be submitted to IHG, for approval prior to production.

**Candlewood Suites – Standardized Room Decor**  
**Nest and Harbour Schemes – Guestroom**

**InterContinental Hotels Group**

Design & Construction  
Three Ravinia Drive, Suite 100  
Atlanta, GA 30346

AREA: Guestroom

---

**MANUFACTURER:**

Fabri-Quilt  
901 East 14<sup>th</sup> Avenue  
North Kansas City, MO 64116  
Attn: Jennifer Boos  
P 816.421.2000  
F 816.471.2853  
E [jboos@fabri-quilt.com](mailto:jboos@fabri-quilt.com)

**REP FIRM:**

---

**SPEC NO:**

**CG-502**

**DESCRIPTION:**

Accent Throw Pillow at King Bed

**MODEL/STYLE NO:**

Custom Accent Pillow with Faux Flange

**FINISH:**

N/A

**DIMENSIONS/REPEAT:**

Body of Pillow: 36"W x 10.5"H, with 2" wide faux flange (OA: 40"W x 14.5"H)

Fabrication to be in accordance with IHG standards as stated in the FF&E Construction and Specification Guidelines and as follows:

**NOTES:**

1. Refer to images below for design intent. Refer to CG-502A for pillow/flange fabric.
2. Pillow fabrication to be of contract quality and suitable for commercial use.
3. Custom accent pillow to have 2" wide faux flange on all sides.
4. Insert: 11.5 oz polyester fiber in 50% poly/50% cotton cover.
5. Full-length synthetic zipper closure to be hidden in body edge length.
6. Products must meet or exceed all applicable state & local codes.
7. No products shall infringe on any third party patents, copyrights, trademarks or other intellectual property rights.



Not to Scale / Not for Color / Design Intent Only

**QUANTITY:** TBD

**UNIT COST:** \$ TBD

**TOTAL COST:** \$ TBD

---

**ISSUE DATE:**

10/21/11

**REVISION DATE:**

**REV. NO:**

**SPEC NO:**

**CG-502**

---

All orders must be marked as specified by IHG. All installed fabrics, upholstery, carpet, wallcovering, and other finish materials must meet local fire codes and regulations. Manufacturer must provide flame certificate to owner/purchaser at time order is shipped. Fabricator and/or installer must confirm the exact quantities required. All substitutions must be approved by IHG prior to ordering. Manufacturers must provide maintenance instructions. All shop drawings, finish samples, artwork and/or strike-offs must be submitted to IHG, for approval prior to production.

**Candlewood Suites – Standardized Room Decor**  
**Harbour Scheme – Guestroom**

**InterContinental Hotels Group**

Design & Construction  
Three Ravinia Drive, Suite 100  
Atlanta, GA 30346

AREA: Bedroom

---

**MANUFACTURER:**

Fabricut  
Attn: Elizabeth Hassell  
9303 East 46th Street  
Tulsa, OK 74145  
P: 800-999-5005 x 6314  
F: 918-665-1177  
E: [elizabeth.hassell@fabricut.com](mailto:elizabeth.hassell@fabricut.com)

**REP FIRM:**

Cindy Royals  
P: 770-792-7156  
E: [Cindy.Royals@Fabricut.com](mailto:Cindy.Royals@Fabricut.com)

---

**SPEC NO: CG-502A (H)**

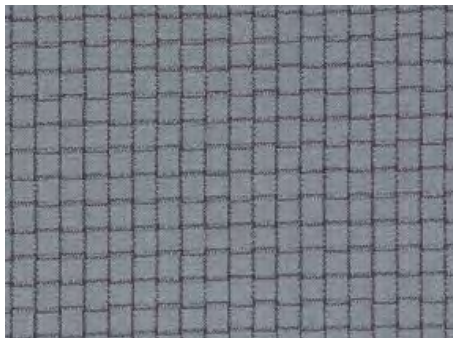
**DESCRIPTION: Fabric at Accent Pillow**

**Pattern:** Custom Cattail / ADV  
**Color:** Seaglass  
**Content:** 100% FR Polyester  
**Base Cloth:** Advantage  
**Weight:** 12.14 oz. / lin. yd.  
**Width:** 54"  
**Repeat:** 0.5"V / 0.5"H  
**Railroaded:** No  
**Codes:** Passes NFPA 701 Inherently

Fabrication to be in accordance with IHG standards as stated in the FF&E Construction and Specification Guidelines and as follows:

**NOTES:**

1. Refer to image below for pillow fabric.
2. Fabric must be of contract quality and suitable for commercial use.
3. Fabricator to verify all site conditions, dimensions, materials required for installation, and confirm fabric yardages.
4. Products must meet or exceed all applicable state & local codes.
5. Refer to CG-502 for pillow fabrication.
6. Manufacturer to ship all excess fabric to property for attic stock.
7. Fabric must be treated for fire retardancy or meet applicable fire codes.
8. No products shall infringe on any third party patents, copyrights, trademarks or other intellectual property rights.



Not for Color / Not to Scale / Design Intent Only

**QUANTITY:** TBD

**UNIT COST:** \$ TBD

**TOTAL COST:** \$ TBD

---

**ISSUE DATE:**

10/21/11

**REVISION DATE:**

**REV. NO:**

**SPEC NO:**

**CG-502A (H)**

---

All orders must be marked as specified by IHG. All installed fabrics, upholstery, carpet, wallcovering, and other finish materials must meet local fire codes and regulations. Manufacturer must provide flame certificate to owner/purchaser at time order is shipped. Fabricator and/or installer must confirm the exact quantities required. All substitutions must be approved by IHG prior to ordering. Manufacturers must provide maintenance instructions. All shop drawings, finish samples, artwork and/or strike-offs must be submitted to IHG, for approval prior to production.



**Candlewood Suites – Standardized Room Decor**  
**Nest and Harbour Schemes – Guestroom**

**InterContinental Hotels Group**

Design & Construction  
Three Ravinia Drive, Suite 100  
Atlanta, GA 30346

AREA: Bedroom

---

**MANUFACTURER:**

Sealy, Inc.

Attn: Chad Gunderson

P: 678-388-9529

F: 678-559-0407

E: [sealyinfo@chadgunderson.com](mailto:sealyinfo@chadgunderson.com)

**REP FIRM:**

---

**SPEC NO: CG-503**

**DESCRIPTION: Bedset (King)**

**MODEL NO: Sealy Posturepedic “Candlewood Suites, Comforts of Home Plush”**

**DIMENSIONS: 76" x 80" x 11-1/2" (also available in 72" x 80")**

**DROPS:** Mattress Only: 11-1/2"  
Boxspring: 9"  
Bed Base: 7-1/2" (typical)  
Overall: 28" – Floor to Mattress Crown (including bed base)

(Dimensions are +/- 1/2")

**CONSTRUCTION:**

**Quilted Top:** Staytrue™ Quilt Top  
1" SuperSoft SealyFoam®, ½" SealyFoam®, 1oz. Flameguard FiberLux™ Fiber

**Ticking:** Designer Damask

**Comfort Layers:** StayTrue™ - ½" SealyFoam®, 2" x 1" Pressure Point Materials, Mesh Insulator

**Innerspring:** 736 PostureTech (Queen Coil Count)

**Support System:** UniCased™ Edge and Base (with Support Channels)

**Box Spring:** Shock Absorber™ Plus

**Warranty:** 10/10 non-prorated

Fabrication to be in accordance with IHG standards as stated in the FF&E Construction and Specification Guidelines and as follows:

**NOTES:**

1. Refer to image below for bedset.
2. Product to be of contract quality and suitable for commercial use.
3. Products must meet or exceed all applicable state & local codes.
4. Pillowtop option is available as an upgrade upon request. Contact Sealy directly for detail/specifications on the Pillowtop version.

**QUANTITY: TBD**

**UNIT COST: \$ TBD**

**TOTAL COST: \$ TBD**

---

**ISSUE DATE:**

10/21/11

**REVISION DATE:**

**REV. NO:**

**SPEC NO:**

**CG-503**

---

All orders must be marked as specified by IHG. All installed fabrics, upholstery, carpet, wallcovering, and other finish materials must meet local fire codes and regulations. Manufacturer must provide flame certificate to owner/purchaser at time order is shipped. Fabricator and/or installer must confirm the exact quantities required. All substitutions must be approved by IHG prior to ordering. Manufacturers must provide maintenance instructions. All shop drawings, finish samples, artwork and/or strike-offs must be submitted to IHG, for approval prior to production.

AREA: Bedroom

**Candlewood Suites Comforts of Home CSS**  
*The Fundamentals of Comfortable Sleep*



**ADDITIONAL FEATURES**



Metal Corner Guards protect box spring edges.

**PLUSH**

- STAYTRUE™ QUILT TOP**
- 1.0 oz. FlameGuard™ FiberLux® Fiber
  - 1" SuperSoft SealyFoam®
  - ½" SealyFoam®
- STAYTRUE™ COMFORT LAYERS**
- ½" SealyFoam®
  - 2" x 1" Pressure Point Materials
  - Mesh Insulator
- INNERSPRING:**
- 736 PostureTech® (Queen coil count)
- SUPPORT SYSTEM:**
- UniCased™ Edge & Base (with Support Channels)
- BOX SPRING:**
- Shock Abzzorber™ Plus
- WARRANTY:**
- 10/10 non-prorated

**DROP MEASUREMENTS – HEIGHT**

Bed Frame*	7½"
Box Spring**	9"
Mattress Only (bottom to crown)	11½"
Set [including frame] (Floor to mattress crown)	27¾"

\* Standard bed frame height

\*\* Box Spring also available in 5.5" and 7" heights

All Sealy Posturepedic CSS sleep systems meet the new 16 CFR 1633 (CAL TB-603) federal flammability standard.



QUANTITY: TBD

UNIT COST: \$ TBD

TOTAL COST: \$ TBD

ISSUE DATE:  
10/21/11

REVISION DATE:

REV. NO:

SPEC NO:

**CG-503**

All orders must be marked as specified by IHG. All installed fabrics, upholstery, carpet, wallcovering, and other finish materials must meet local fire codes and regulations. Manufacturer must provide flame certificate to owner/purchaser at time order is shipped. Fabricator and/or installer must confirm the exact quantities required. All substitutions must be approved by IHG prior to ordering. Manufacturers must provide maintenance instructions. All shop drawings, finish samples, artwork and/or strike-offs must be submitted to IHG, for approval prior to production.

**Candlewood Suites – Standardized Room Decor  
Nest and Harbour Schemes – Guestroom**

**InterContinental Hotels Group**

Design & Construction  
Three Ravinia Drive, Suite 100

AREA: Bedroom

---

**MANUFACTURER:**

Fabricut  
Attn: Elizabeth Hassell  
9303 East 46th Street  
Tulsa, OK 74145  
P: 800-999-5005 x 6314  
F: 918-665-1177  
E: [elizabeth.hassell@fabricut.com](mailto:elizabeth.hassell@fabricut.com)

**REP FIRM:**

Cindy Royals  
P: 770-792-7156  
E: [Cindy.Royals@Fabricut.com](mailto:Cindy.Royals@Fabricut.com)

---

**SPEC NO: CG-504**

**DESCRIPTION:** Queen Decorative Half Coverlet Fabrication

**FINISHED SIZE:** Approx. 92"W x 40" L  
Drop to be 16" from top of mattress.  
(Decorative Half Coverlet to fall 1" below box spring)  
Standard Mattress size: 60" W x 80" L x 12" H

Fabrication to be in accordance with IHG Brand Standards, IHG Bedding Preambles, and as follows:

**NOTES:**

1. Refer to CG-504A for top fabric, CG-504B for lining and banding fabric and CG-504C for inter-liner fabric.
2. Construction: Decorative half coverlet consists of top fabric, lining and banding fabric fully encasing Custom IHG 7361 Inter-liner. Decorative Half Coverlet is fully sewn on all four edges with True Lock stitch serger (no quilt stitching is visible). Edge treatment to be a finished 2" wide band (CG-504B) on both sides of coverlet (folded around edges) with body of coverlet (top fabric, lining, and inter-liner) inserted into banding the full 2" width so that the banding is the same continuous thickness on all edges. Banding should be sewn with 8-9 stitches per inch with the stitch line positioned 1/8" from the inside edge (some variance may occur at bell corners). Two top corners of the decorative half coverlet to be square mitred corners of banding. Two bottom (foot) corners of the decorative half coverlet to be bell-shaped by cutting a radius starting at approximately 17" (both sides) from the 90 degree angle at the corner.
3. Label: Decorative half coverlet to receive a tag with size, washing instructions, and "sewn in USA" attached on the lining side at approximately 25" from top corner on side drop.
4. Decorative Half Coverlet fabrication, fabric, and inter-liner to be of contract quality and suitable for commercial use.
5. Fabric must be pattern matched at any and all seams.
6. Fabricator to verify all site conditions, bed dimensions, materials required, and fabric yardages prior to construction.
7. Refer to drawings for location.

**QUANTITY:** TBD

**UNIT COST:** \$ TBD

**TOTAL COST:** \$ TBD

---

**ISSUE DATE:**  
1/23/12

**REVISION DATE:**

**REV. NO:**

**SPEC NO:**

**CG-504**

---

All orders must be marked as specified by IHG. All installed fabrics, upholstery, carpet, wallcovering, and other finish materials must meet local fire codes and regulations. Manufacturer must provide flame certificate to owner/purchaser at time order is shipped. Fabricator and/or installer must confirm the exact quantities required. All substitutions must be approved by IHG prior to ordering. Manufacturers must provide maintenance instructions. All shop drawings, finish samples, artwork and/or strike-offs must be submitted to IHG, for approval prior to production.

**Candlewood Suites – Standardized Room Decor  
Harbour Scheme – Guestroom**

**InterContinental Hotels Group**

Design & Construction  
Three Ravinia Drive, Suite 100  
Atlanta, GA 30346

AREA: Bedroom

---

**MANUFACTURER:**

Fabricut  
Attn: Elizabeth Hassell  
9303 East 46th Street  
Tulsa, OK 74145  
P: 800-999-5005 x 6314  
F: 918-665-1177  
E: [elizabeth.hassell@fabricut.com](mailto:elizabeth.hassell@fabricut.com)

**REP FIRM:**

Cindy Royals  
P: 770-792-7156  
E: [Cindy.Royals@Fabricut.com](mailto:Cindy.Royals@Fabricut.com)

---

**SPEC NO: CG-504A (H)**

**DESCRIPTION: Queen Decorative Half Coverlet top fabric**

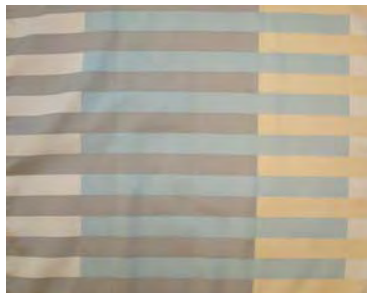
**FABRIC:**

Pattern: Custom Leinbach  
Color: Stone  
Content: 100% FR Polyester  
Base Cloth: Tucson with StainSmart  
Weight: 18 oz. / lin. yd.  
Width: 126"  
Repeat: 25" V / 1.8" H  
Railroaded: Yes  
Codes: Passes NFPA 701 Inherently  
Finish: StainSmart

Fabrication to be in accordance with IHG standards as stated in the FF&E Construction and Specification Guidelines and as follows:

**NOTES:**

1. Refer to image below for fabric. Fabric must be of contract quality and suitable for commercial use.
2. Refer to CG-504 for fabrication. Refer to CG-504B (H) for lining fabric.
3. Products must meet or exceed all applicable state & local codes.
4. Fabricator to verify all site conditions, bed dimensions, materials required, and fabric yardages.
5. Manufacturer to ship all excess fabric to property for attic stock.
6. Fabric must be treated for fire retardancy or meet applicable fire codes.
7. No products shall infringe on any third party patents, copyrights, trademarks or other intellectual property rights.



Not for Color / Not to Scale / Design Intent Only

**QUANTITY: TBD**

**UNIT COST: \$ TBD**

**TOTAL COST: \$ TBD**

---

**ISSUE DATE:**  
1/23/12

**REVISION DATE:**

**REV. NO:**

**SPEC NO:**  
**CG-504A (H)**

---

All orders must be marked as specified by IHG. All installed fabrics, upholstery, carpet, wallcovering, and other finish materials must meet local fire codes and regulations. Manufacturer must provide flame certificate to owner/purchaser at time order is shipped. Fabricator and/or installer must confirm the exact quantities required. All substitutions must be approved by IHG prior to ordering. Manufacturers must provide maintenance instructions. All shop drawings, finish samples, artwork and/or strike-offs must be submitted to IHG, for approval prior to production.

**Candlewood Suites – Standardized Room Decor  
Harbour Scheme – Guestroom**

**InterContinental Hotels Group**

Design & Construction  
Three Ravinia Drive, Suite 100  
Atlanta, GA 30346

AREA: Bedroom

---

**MANUFACTURER:**

Fabricut  
Attn: Elizabeth Hassell  
9303 East 46th Street  
Tulsa, OK 74145  
P: 800-999-5005 x 6314  
F: 918-665-1177  
E: [elizabeth.hassell@fabricut.com](mailto:elizabeth.hassell@fabricut.com)

**REP FIRM:**

Cindy Royals  
P: 770-792-7156  
E: [Cindy.Royals@Fabricut.com](mailto:Cindy.Royals@Fabricut.com)

---

**SPEC NO: CG-504B (H)**

**DESCRIPTION: Queen Decorative Half Coverlet Lining Fabric**

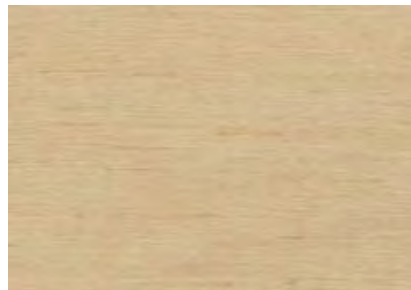
**FABRIC:**

Pattern: Andan Texture  
Color: Custom 2018  
Content: 100% FR Polyester  
Base Cloth: Tucson with Stain Smart  
Weight: 18 oz. / lin. yd.  
Width: 126"  
Repeat: N/A  
Railroaded: Yes  
Codes: Passes NFPA 701 Inherently  
Finish: StainSmart

Fabrication to be in accordance with IHG Brand Standards, IHG Bedding preambles, and Specification Guidelines as follows:

**NOTES:**

1. Refer to image below for lining fabric. Fabric must be of contract quality and suitable for commercial use.
2. Products must meet or exceed all applicable state & local codes.
3. Fabricator to verify all site conditions, bed dimensions, materials required, and fabric yardages.
4. Refer to CG-504 for fabrication. Refer to CG-504A (H) for top fabric.
5. Manufacturer to ship all excess fabric to property for attic stock.
6. Fabric must be treated for fire retardancy or meet applicable fire codes.
7. No products shall infringe on any third party patents, copyrights, trademarks or other intellectual property rights.



Not for Color / Not to Scale / Design Intent Only

**QUANTITY: TBD**

**UNIT COST: \$ TBD**

**TOTAL COST: \$ TBD**

---

**ISSUE DATE:**  
1/23/12

**REVISION DATE:**

**REV. NO:**

**SPEC NO:**  
**CG-504B (H)**

---

All orders must be marked as specified by IHG. All installed fabrics, upholstery, carpet, wallcovering, and other finish materials must meet local fire codes and regulations. Manufacturer must provide flame certificate to owner/purchaser at time order is shipped. Fabricator and/or installer must confirm the exact quantities required. All substitutions must be approved by IHG prior to ordering. Manufacturers must provide maintenance instructions. All shop drawings, finish samples, artwork and/or strike-offs must be submitted to IHG, for approval prior to production.

**Candlewood Suites – Standardized Room Decor  
Nest and Harbour Schemes – Guestroom**

**InterContinental Hotels Group**

Design & Construction  
Three Ravinia Drive, Suite 100

AREA: Bedroom

---

**MANUFACTURER:**

EE Sewing, Inc.  
33155 S. 4320 Rd.  
Big Cabin, OK 74332  
P: 918-783-5343  
F: 918-783-5718

**REP FIRM:**

---

**SPEC NO: CG-504C**

**DESCRIPTION:** Queen Decorative Half Coverlet Inter-liner Fabric

**NAME:** Custom IHG 7361 Quilted Inter-liner

**COLOR:** White

**CONTENT:** Top & Bottom Casing Construction: A blend of 70/30 polyester cotton fibers in a 68/37 weave.  
Polyester Fill: 5 ounces per 48" x 36" proprietary blend of resin coated polyester fibers.

**CONSTRUCTION:** Top and bottom casing is quilted with a double variegated box pattern, 7-8 stitches per inch using a lock stitch machine.

Fabrication to be in accordance with IHG Brand Standards, IHG Bedding Preambles, and as follows:

**NOTES:**

1. All components must be of contract quality and suitable for commercial use.
2. Refer to CG-504 and Candlewood Bedding Preamble for decorative half coverlet fabrication.
3. Products must meet or exceed all applicable state & local codes.
4. Manufacturer to ship all excess fabric to property for attic stock.
5. Fabric must be treated for fire retardancy or meet applicable fire codes.
6. No products shall infringe on any third party patents, copyrights, trademarks or other intellectual property rights.

**QUANTITY:** TBD

**UNIT COST:** \$ TBD

**TOTAL COST:** \$ TBD

---

**ISSUE DATE:**  
1/23/12

**REVISION DATE:**

**REV. NO:**

**SPEC NO:**  
**CG-504C**

---

All orders must be marked as specified by IHG. All installed fabrics, upholstery, carpet, wallcovering, and other finish materials must meet local fire codes and regulations. Manufacturer must provide flame certificate to owner/purchaser at time order is shipped. Fabricator and/or installer must confirm the exact quantities required. All substitutions must be approved by IHG prior to ordering. Manufacturers must provide maintenance instructions. All shop drawings, finish samples, artwork and/or strike-offs must be submitted to IHG, for approval prior to production.

**Candlewood Suites – Standardized Room Decor**  
**Nest and Harbour Schemes – Guestroom**

**InterContinental Hotels Group**

Design & Construction  
Three Ravinia Drive, Suite 100  
Atlanta, GA 30346

AREA: Bedroom

**MANUFACTURER:**

Fabriquilt  
Attn: Barry Oltsik  
901 East 14<sup>th</sup> Avenue  
North Kansas City, MO 64116  
P: 816-421-2000  
F: 816-471-2853  
E: [barry@fabri-quilt.com](mailto:barry@fabri-quilt.com)

**REP FIRM:**

**SPEC NO:**

**CG-505**

**DESCRIPTION:**

Queen Boxspring Cover

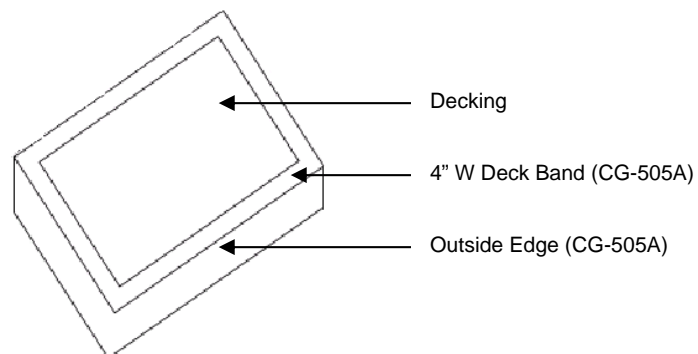
**FINISHED SIZE:**

Approximately 60" x 80 x 12" (W x L x H) typical  
(Actual dimensions must be field verified due to size variations of mattresses)

Fabrication to be in accordance with IHG standards as stated in the FF&E Construction and Specification Guidelines and as follows. See Staybridge Suite Bedding Preamble for more detail.

**NOTES:**

1. Refer to CG-505A for decorative boxspring cover fabric (drop fabric).
2. Product to be of contract quality and suitable for commercial use.
3. Products must meet or exceed all applicable state & local codes.
4. Drops should be approximately 3" longer than actual box spring drop to allow adequate wrap under the boxspring. Top cover to be 50/50 white polyester/cotton decking used in conjunction with 4" wide fabric deck bands out of drop fabric. Polyester/cotton decking to have a 170 thread count min. Bottom Edge Detail: 1" turned lock stitched hem with ½" elastic around all 4 sides of boxspring. Cover to fit snugly on drop on all four sides of boxspring.
5. Fabricator to verify all site conditions, dimensions, materials required for installation, and confirm fabric yardages.
6. Boxspring construction: Refer to Candlewood Suites Bedding Preamble.
7. No products shall infringe on any third party patents, copyrights, trademarks or other intellectual property rights.



**QUANTITY:** TBD

**UNIT COST:** \$ TBD

**TOTAL COST:** \$ TBD

**ISSUE DATE:**

10/21/11

**REVISION DATE:**

**REV. NO:**

**SPEC NO:**

**CG-505**

All orders must be marked as specified by IHG. All installed fabrics, upholstery, carpet, wallcovering, and other finish materials must meet local fire codes and regulations. Manufacturer must provide flame certificate to owner/purchaser at time order is shipped. Fabricator and/or installer must confirm the exact quantities required. All substitutions must be approved by IHG prior to ordering. Manufacturers must provide maintenance instructions. All shop drawings, finish samples, artwork and/or strike-offs must be submitted to IHG, for approval prior to production.

**Candlewood Suites – Standardized Room Decor**  
**Harbour Scheme – Guestroom**

**InterContinental Hotels Group**

Design & Construction  
Three Ravinia Drive, Suite 100  
Atlanta, GA 30346

AREA: Bedroom

---

**MANUFACTURER:**

Fabricut  
Attn: Elizabeth Hassell  
9303 East 46th Street  
Tulsa, OK 74145  
P: 800-999-5005 x 6314  
F: 918-665-1177  
E: [elizabeth.hassell@fabricut.com](mailto:elizabeth.hassell@fabricut.com)

**REP FIRM:**

Cindy Royals  
P: 770-792-7156  
E: [Cindy.Royals@Fabricut.com](mailto:Cindy.Royals@Fabricut.com)

---

**SPEC NO: CG-505A (H)**

**DESCRIPTION:** Fabric at Boxspring Cover

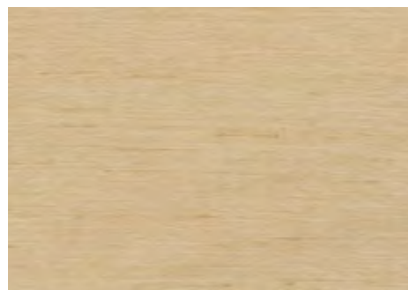
**DUVET FABRIC:**

Pattern: Andan Texture  
Color: Custom 2018  
Content: 100% FR Polyester  
Base Cloth: Tucson with Stain Smart  
Weight: 18 oz. / lin. yd.  
Width: 126"  
Repeat: N/A  
Railroaded: Yes  
Codes: Passes NFPA 701 Inherently  
Finish: StainSmart

Fabrication to be in accordance with IHG standards as stated in the FF&E Construction and Specification Guidelines and as follows:

**NOTES:**

1. Refer to image below for boxspring cover fabric.
2. Fabric must be of contract quality and suitable for commercial use.
3. Fabricator to verify all site conditions, dimensions, materials required for installation, and confirm fabric yardages.
4. Products must meet or exceed all applicable state & local codes.
5. Refer to CG-505 for fabrication.
6. Manufacturer to ship all excess fabric to property for attic stock.
7. Fabric must be treated for fire retardancy or meet applicable fire codes.
8. No products shall infringe on any third party patents, copyrights, trademarks or other intellectual property rights.



Not for Color / Not to Scale / Design Intent Only

**QUANTITY:** TBD

**UNIT COST:** \$ TBD

**TOTAL COST:** \$ TBD

---

**ISSUE DATE:**

10/21/11

**REVISION DATE:**

**REV. NO:**

**SPEC NO:**

**CG-505A (H)**

---

All orders must be marked as specified by IHG. All installed fabrics, upholstery, carpet, wallcovering, and other finish materials must meet local fire codes and regulations. Manufacturer must provide flame certificate to owner/purchaser at time order is shipped. Fabricator and/or installer must confirm the exact quantities required. All substitutions must be approved by IHG prior to ordering. Manufacturers must provide maintenance instructions. All shop drawings, finish samples, artwork and/or strike-offs must be submitted to IHG, for approval prior to production.



**Candlewood Suites – Standardized Room Decor**  
**Nest and Harbour Schemes – Guestroom**

**InterContinental Hotels Group**

Design & Construction  
Three Ravinia Drive, Suite 100  
Atlanta, GA 30346

AREA: Guestroom

---

**MANUFACTURER:**

Fabri-Quilt  
901 East 14<sup>th</sup> Avenue  
North Kansas City, MO 64116  
Attn: Jennifer Boos  
P 816.421.2000  
F 816.471.2853  
E [jboos@fabri-quilt.com](mailto:jboos@fabri-quilt.com)

**REP FIRM:**

---

**SPEC NO: CG-506**

**DESCRIPTION:** Accent Throw Pillow at Queen and Full Size Beds

**MODEL/STYLE NO:** Custom Accent Pillow with Faux Flange

**FINISH:** N/A

**DIMENSIONS/REPEAT:** Body of Pillow: 36"W x 10.5"H, with 2" wide faux flange (OA: 40"W x 14.5"H)

Fabrication to be in accordance with IHG standards as stated in the FF&E Construction and Specification Guidelines and as follows:

**NOTES:**

1. Refer to images below for design intent. Refer to CG-506A for pillow/flange fabric.
2. Pillow fabrication to be of contract quality and suitable for commercial use.
3. Custom accent pillow to have 2" wide faux flange on all sides.
4. Insert: 11.5 oz polyester fiber in 50% poly / 50% cotton cover.
5. Full-length synthetic zipper closure to be hidden in body edge length.
6. Products must meet or exceed all applicable state & local codes.
7. No products shall infringe on any third party patents, copyrights, trademarks or other intellectual property rights.



Not to Scale / Not for Color / Design Intent Only

**QUANTITY:** TBD

**UNIT COST:** \$ TBD

**TOTAL COST:** \$ TBD

---

**ISSUE DATE:**

10/21/11

**REVISION DATE:**

**REV. NO:**

**SPEC NO:**

**CG-506**

---

All orders must be marked as specified by IHG. All installed fabrics, upholstery, carpet, wallcovering, and other finish materials must meet local fire codes and regulations. Manufacturer must provide flame certificate to owner/purchaser at time order is shipped. Fabricator and/or installer must confirm the exact quantities required. All substitutions must be approved by IHG prior to ordering. Manufacturers must provide maintenance instructions. All shop drawings, finish samples, artwork and/or strike-offs must be submitted to IHG, for approval prior to production.

**Candlewood Suites – Standardized Room Decor**  
**Harbour Scheme – Guestroom**

**InterContinental Hotels Group**

Design & Construction  
Three Ravinia Drive, Suite 100  
Atlanta, GA 30346

AREA: Bedroom

---

**MANUFACTURER:**

Fabricut  
Attn: Elizabeth Hassell  
9303 East 46th Street  
Tulsa, OK 74145  
P: 800-999-5005 x 6314  
F: 918-665-1177  
E: [elizabeth.hassell@fabricut.com](mailto:elizabeth.hassell@fabricut.com)

**REP FIRM:**

Cindy Royals  
P: 770-792-7156  
E: [Cindy.Royals@Fabricut.com](mailto:Cindy.Royals@Fabricut.com)

---

**SPEC NO: CG-506A (H)**

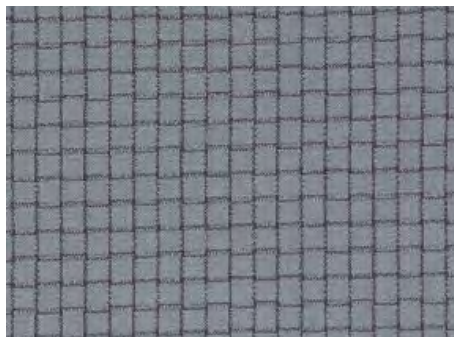
**DESCRIPTION: Fabric at Accent Pillow**

**Pattern:** Custom Cattail / ADV  
**Color:** Seaglass  
**Content:** 100% FR Polyester  
**Base Cloth:** Advantage  
**Weight:** 12.14 oz. / lin. yd.  
**Width:** 54"  
**Repeat:** 0.5"V / 0.5"H  
**Railroaded:** No  
**Codes:** Passes NFPA 701 Inherently

Fabrication to be in accordance with IHG standards as stated in the FF&E Construction and Specification Guidelines and as follows:

**NOTES:**

1. Refer to image below for pillow fabric.
2. Fabric must be of contract quality and suitable for commercial use.
3. Products must meet or exceed all applicable state & local codes.
4. Fabricator to verify all site conditions, dimensions, materials required for installation, and confirm fabric yardages.
5. Refer to CG-506 for pillow fabrication.
6. Manufacturer to ship all excess fabric to property for attic stock.
7. Fabric must be treated for fire retardancy or meet applicable fire codes.
8. No products shall infringe on any third party patents, copyrights, trademarks or other intellectual property rights.



Not for Color / Not to Scale / Design Intent Only

**QUANTITY:** TBD

**UNIT COST:** \$ TBD

**TOTAL COST:** \$ TBD

---

**ISSUE DATE:**

10/21/11

**REVISION DATE:**

**REV. NO:**

**SPEC NO:**

**CG-506A (H)**

---

All orders must be marked as specified by IHG. All installed fabrics, upholstery, carpet, wallcovering, and other finish materials must meet local fire codes and regulations. Manufacturer must provide flame certificate to owner/purchaser at time order is shipped. Fabricator and/or installer must confirm the exact quantities required. All substitutions must be approved by IHG prior to ordering. Manufacturers must provide maintenance instructions. All shop drawings, finish samples, artwork and/or strike-offs must be submitted to IHG, for approval prior to production.

**Candlewood Suites – Standardized Room Decor**  
**Nest and Harbour Schemes – Guestroom**

**InterContinental Hotels Group**

Design & Construction  
Three Ravinia Drive, Suite 100  
Atlanta, GA 30346

AREA: Bedroom

---

**MANUFACTURER:**

Sealy, Inc.  
Attn: Chad Gunderson  
P: 678-388-9529  
F: 678-559-0407  
E: [sealyinfo@chadgunderson.com](mailto:sealyinfo@chadgunderson.com)

**REP FIRM:**

---

**SPEC NO: CG-507**

**DESCRIPTION: Bedset (Queen)**

**MODEL NO: Sealy Posturepedic “Candlewood Suites, Comforts of Home Plush”**

**DIMENSIONS: 60" x 80" x 11-1/2"**

**DROPS:** Mattress Only: 11-1/2"  
Boxspring: 9"  
Bed Base: 7-1/2" (typical)  
Overall: 28" – Floor to Mattress Crown (including bed base)

(Dimensions are +/- 1/2")

**CONSTRUCTION:**

**Quilted Top:** Staytrue™ Quilt Top  
1" SuperSoft SealyFoam®, ½" SealyFoam®, 1oz. Flameguard FiberLux™ Fiber

**Ticking:** Designer Damask

**Comfort Layers:** StayTrue™ - ½" SealyFoam®, 2" x 1" Pressure Point Materials, Mesh Insulator

**Innerspring:** 736 PostureTech (Queen Coil Count)

**Support System:** UniCased™ Edge and Base (with Support Channels)

**Box Spring:** Shock Absorber™ Plus

**Warranty:** 10/10 non-prorated

Fabrication to be in accordance with IHG standards as stated in the FF&E Construction and Specification Guidelines and as follows:

**NOTES:**

1. Refer to image below for bedset.
2. Product to be of contract quality and suitable for commercial use.
3. Products must meet or exceed all applicable state & local codes.
4. Pillowtop option is available as an upgrade upon request. Contact Sealy directly for detail/specifications on the Pillowtop version.

**QUANTITY: TBD**

**UNIT COST: \$ TBD**

**TOTAL COST: \$ TBD**

---

**ISSUE DATE:**

10/21/11

**REVISION DATE:**

**REV. NO:**

**SPEC NO:**

**CG-507**

---

All orders must be marked as specified by IHG. All installed fabrics, upholstery, carpet, wallcovering, and other finish materials must meet local fire codes and regulations. Manufacturer must provide flame certificate to owner/purchaser at time order is shipped. Fabricator and/or installer must confirm the exact quantities required. All substitutions must be approved by IHG prior to ordering. Manufacturers must provide maintenance instructions. All shop drawings, finish samples, artwork and/or strike-offs must be submitted to IHG, for approval prior to production.

AREA: Bedroom

# Candlewood Suites Comforts of Home CSS

*The Fundamentals of Comfortable Sleep*



**ADDITIONAL FEATURES**



Metal Corner Guards protect box spring edges.

**PLUSH**

- STAYTRUE™ QUILT TOP**
- 1.0 oz. FlameGuard™ FiberLux® Fiber
  - 1" SuperSoft SealyFoam®
  - ½" SealyFoam®
- STAYTRUE™ COMFORT LAYERS**
- ½" SealyFoam®
  - 2" x 1" Pressure Point Materials
  - Mesh Insulator
- INNERSPRING:**
- 736 PostureTech® (Queen coil count)
- SUPPORT SYSTEM:**
- UniCased™ Edge & Base (with Support Channels)
- BOX SPRING:**
- Shock Abzzorber™ Plus
- WARRANTY:**
- 10/10 non-prorated

**DROP MEASUREMENTS – HEIGHT**

Bed Frame*	7½"
Box Spring**	9"
Mattress Only (bottom to crown)	11½"
Set [including frame] (Floor to mattress crown)	27¾"

\* Standard bed frame height

\*\* Box Spring also available in 5.5" and 7" heights

All Sealy Posturepedic CSS sleep systems meet the new 16 CFR 1633 (CAL TB-603) federal flammability standard.



QUANTITY: TBD

UNIT COST: \$ TBD

TOTAL COST: \$ TBD

ISSUE DATE:  
10/21/11

REVISION DATE:

REV. NO:

SPEC NO:

**CG-507**

All orders must be marked as specified by IHG. All installed fabrics, upholstery, carpet, wallcovering, and other finish materials must meet local fire codes and regulations. Manufacturer must provide flame certificate to owner/purchaser at time order is shipped. Fabricator and/or installer must confirm the exact quantities required. All substitutions must be approved by IHG prior to ordering. Manufacturers must provide maintenance instructions. All shop drawings, finish samples, artwork and/or strike-offs must be submitted to IHG, for approval prior to production.

**Candlewood Suites – Standardized Room Decor  
Nest and Harbour Schemes – Guestroom**

**InterContinental Hotels Group**

Design & Construction  
Three Ravinia Drive, Suite 100

AREA: Bedroom

---

**MANUFACTURER:**

Fabricut  
Attn: Elizabeth Hassell  
9303 East 46th Street  
Tulsa, OK 74145  
P: 800-999-5005 x 6314  
F: 918-665-1177  
E: [elizabeth.hassell@fabricut.com](mailto:elizabeth.hassell@fabricut.com)

**REP FIRM:**

Cindy Royals  
P: 770-792-7156  
E: [Cindy.Royals@Fabricut.com](mailto:Cindy.Royals@Fabricut.com)

---

**SPEC NO: CG-508**

**DESCRIPTION:** Full Decorative Half Coverlet Fabrication

**FINISHED SIZE:** Approx. 86"W x 40" L  
Drop to be 16" from top of mattress.  
(Decorative Half Coverlet to fall 1" below box spring)  
Standard Mattress size: 54" W x 80" L x 12" H

Fabrication to be in accordance with IHG Brand Standards, IHG Bedding Preambles, and as follows:

**NOTES:**

1. Refer to CG-508A for top fabric, CG-508B for lining and banding fabric and CG-508C for inter-liner fabric.
2. Construction: Decorative half coverlet consists of top fabric, lining and banding fabric fully encasing Custom IHG 7361 Inter-liner. Decorative Half Coverlet is fully sewn on all four edges with True Lock stitch serger (no quilt stitching is visible). Edge treatment to be a finished 2" wide band (CG-508B) on both sides of coverlet (folded around edges) with body of coverlet (top fabric, lining, and inter-liner) inserted into banding the full 2" width so that the banding is the same continuous thickness on all edges. Banding should be sewn with 8-9 stitches per inch with the stitch line positioned 1/8" from the inside edge (some variance may occur at bell corners). Two top corners of the decorative half coverlet to be square mitred corners of banding. Two bottom (foot) corners of the decorative half coverlet to be bell-shaped by cutting a radius starting at approximately 17" (both sides) from the 90 degree angle at the corner.
3. Label: Decorative half coverlet to receive a tag with size, washing instructions, and "sewn in USA" attached on the lining side at approximately 25" from top corner on side drop.
4. Decorative Half Coverlet fabrication, fabric, and inter-liner to be of contract quality and suitable for commercial use.
5. Fabric must be pattern matched at any and all seams.
6. Fabricator to verify all site conditions, bed dimensions, materials required, and fabric yardages prior to construction.
7. Refer to drawings for location.

**QUANTITY:** TBD

**UNIT COST:** \$ TBD

**TOTAL COST:** \$ TBD

---

**ISSUE DATE:**  
1/23/12

**REVISION DATE:**

**REV. NO:**

**SPEC NO:**

**CG-508**

---

All orders must be marked as specified by IHG. All installed fabrics, upholstery, carpet, wallcovering, and other finish materials must meet local fire codes and regulations. Manufacturer must provide flame certificate to owner/purchaser at time order is shipped. Fabricator and/or installer must confirm the exact quantities required. All substitutions must be approved by IHG prior to ordering. Manufacturers must provide maintenance instructions. All shop drawings, finish samples, artwork and/or strike-offs must be submitted to IHG, for approval prior to production.

**Candlewood Suites – Standardized Room Decor  
Harbour Scheme – Guestroom**

**InterContinental Hotels Group**

Design & Construction  
Three Ravinia Drive, Suite 100  
Atlanta, GA 30346

AREA: Bedroom

---

**MANUFACTURER:**

Fabricut  
Attn: Elizabeth Hassell  
9303 East 46th Street  
Tulsa, OK 74145  
P: 800-999-5005 x 6314  
F: 918-665-1177  
E: [elizabeth.hassell@fabricut.com](mailto:elizabeth.hassell@fabricut.com)

**REP FIRM:**

Cindy Royals  
P: 770-792-7156  
E: [Cindy.Royals@Fabricut.com](mailto:Cindy.Royals@Fabricut.com)

---

**SPEC NO: CG-508A (H)**

**DESCRIPTION: Full Decorative Half Coverlet top fabric**

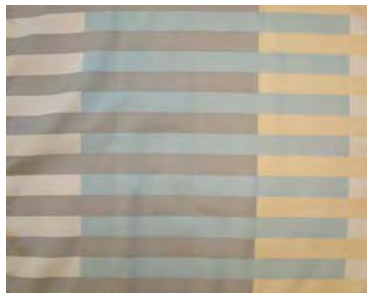
**FABRIC:**

Pattern: Custom Leinbach  
Color: Stone  
Content: 100% FR Polyester  
Base Cloth: Tucson with StainSmart  
Weight: 18 oz. / lin. yd.  
Width: 126"  
Repeat: 25" V / 1.8" H  
Railroaded: Yes  
Codes: Passes NFPA 701 Inherently  
Finish: StainSmart

Fabrication to be in accordance with IHG standards as stated in the FF&E Construction and Specification Guidelines and as follows:

**NOTES:**

1. Refer to image below for fabric. Fabric must be of contract quality and suitable for commercial use.
2. Refer to CG-508 for fabrication. Refer to CG-508B (H) for lining fabric.
3. Products must meet or exceed all applicable state & local codes.
4. Fabricator to verify all site conditions, bed dimensions, materials required, and fabric yardages.
5. Manufacturer to ship all excess fabric to property for attic stock.
6. Fabric must be treated for fire retardancy or meet applicable fire codes.
7. No products shall infringe on any third party patents, copyrights, trademarks or other intellectual property rights.



Not for Color / Not to Scale / Design Intent Only

**QUANTITY: TBD**

**UNIT COST: \$ TBD**

**TOTAL COST: \$ TBD**

---

**ISSUE DATE:**  
1/23/12

**REVISION DATE:**

**REV. NO:**

**SPEC NO:**  
**CG-508A (H)**

---

All orders must be marked as specified by IHG. All installed fabrics, upholstery, carpet, wallcovering, and other finish materials must meet local fire codes and regulations. Manufacturer must provide flame certificate to owner/purchaser at time order is shipped. Fabricator and/or installer must confirm the exact quantities required. All substitutions must be approved by IHG prior to ordering. Manufacturers must provide maintenance instructions. All shop drawings, finish samples, artwork and/or strike-offs must be submitted to IHG, for approval prior to production.

**Candlewood Suites – Standardized Room Decor**  
**Harbour Scheme – Guestroom**

**InterContinental Hotels Group**

Design & Construction  
Three Ravinia Drive, Suite 100  
Atlanta, GA 30346

AREA: Bedroom

---

**MANUFACTURER:**

Fabricut  
Attn: Elizabeth Hassell  
9303 East 46th Street  
Tulsa, OK 74145  
P: 800-999-5005 x 6314  
F: 918-665-1177  
E: [elizabeth.hassell@fabricut.com](mailto:elizabeth.hassell@fabricut.com)

**REP FIRM:**

Cindy Royals  
P: 770-792-7156  
E: [Cindy.Royals@Fabricut.com](mailto:Cindy.Royals@Fabricut.com)

---

**SPEC NO: CG-508B (H)**

**DESCRIPTION: Full Decorative Half Coverlet Lining Fabric**

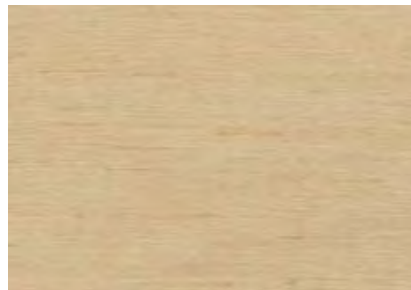
**FABRIC:**

Pattern: Andan Texture  
Color: Custom 2018  
Content: 100% FR Polyester  
Base Cloth: Tucson with Stain Smart  
Weight: 18 oz. / lin. yd.  
Width: 126"  
Repeat: N/A  
Railroaded: Yes  
Codes: Passes NFPA 701 Inherently  
Finish: StainSmart

Fabrication to be in accordance with IHG Brand Standards, IHG Bedding preambles, and Specification Guidelines as follows:

**NOTES:**

1. Refer to image below for lining fabric. Fabric must be of contract quality and suitable for commercial use.
2. Products must meet or exceed all applicable state & local codes.
3. Fabricator to verify all site conditions, bed dimensions, materials required, and fabric yardages.
4. Refer to CG-508 for fabrication. Refer to CG-508A (H) for top fabric.
5. Manufacturer to ship all excess fabric to property for attic stock.
6. Fabric must be treated for fire retardancy or meet applicable fire codes.
7. No products shall infringe on any third party patents, copyrights, trademarks or other intellectual property rights.



Not for Color / Not to Scale / Design Intent Only

**QUANTITY: TBD**

**UNIT COST: \$ TBD**

**TOTAL COST: \$ TBD**

---

**ISSUE DATE:**  
1/23/12

**REVISION DATE:**

**REV. NO:**

**SPEC NO:**  
**CG-508B (H)**

---

All orders must be marked as specified by IHG. All installed fabrics, upholstery, carpet, wallcovering, and other finish materials must meet local fire codes and regulations. Manufacturer must provide flame certificate to owner/purchaser at time order is shipped. Fabricator and/or installer must confirm the exact quantities required. All substitutions must be approved by IHG prior to ordering. Manufacturers must provide maintenance instructions. All shop drawings, finish samples, artwork and/or strike-offs must be submitted to IHG, for approval prior to production.

**Candlewood Suites – Standardized Room Decor  
Nest and Harbour Schemes – Guestroom**

**InterContinental Hotels Group**

Design & Construction  
Three Ravinia Drive, Suite 100

AREA: Bedroom

---

**MANUFACTURER:**

EE Sewing, Inc.  
33155 S. 4320 Rd.  
Big Cabin, OK 74332  
P: 918-783-5343  
F: 918-783-5718

**REP FIRM:**

---

**SPEC NO: CG-508C**

**DESCRIPTION:** Full Decorative Half Coverlet Inter-liner Fabric

**NAME:** Custom IHG 7361 Quilted Inter-liner

**COLOR:** White

**CONTENT:** Top & Bottom Casing Construction: A blend of 70/30 polyester cotton fibers in a 68/37 weave.  
Polyester Fill: 5 ounces per 48" x 36" proprietary blend of resin coated polyester fibers.

**CONSTRUCTION:** Top and bottom casing is quilted with a double variegated box pattern, 7-8 stitches per inch using a lock stitch machine.

Fabrication to be in accordance with IHG Brand Standards, IHG Bedding Preambles, and as follows:

**NOTES:**

1. All components must be of contract quality and suitable for commercial use.
2. Refer to CG-508 and Candlewood Bedding Preamble for decorative half coverlet fabrication.
3. Products must meet or exceed all applicable state & local codes.
4. Manufacturer to ship all excess fabric to property for attic stock.
5. Fabric must be treated for fire retardancy or meet applicable fire codes.
6. No products shall infringe on any third party patents, copyrights, trademarks or other intellectual property rights.

**QUANTITY:** TBD

**UNIT COST:** \$ TBD

**TOTAL COST:** \$ TBD

---

**ISSUE DATE:**  
1/23/12

**REVISION DATE:**

**REV. NO:**

**SPEC NO:**  
**CG-508C**

---

All orders must be marked as specified by IHG. All installed fabrics, upholstery, carpet, wallcovering, and other finish materials must meet local fire codes and regulations. Manufacturer must provide flame certificate to owner/purchaser at time order is shipped. Fabricator and/or installer must confirm the exact quantities required. All substitutions must be approved by IHG prior to ordering. Manufacturers must provide maintenance instructions. All shop drawings, finish samples, artwork and/or strike-offs must be submitted to IHG, for approval prior to production.