

# **Window Treatment Elevations and Specifications**

**Public Space Window Covering Specifications**

**Sheer Fabric (Lobby, Meeting Room and Public Board Room)**

- Vendor: P/Kaufman Contract
- Pattern/Color: Mod Mini Sheer/Custom Bronze
- Marriott Material ID No.: 210885
- Width: 118" Wide
- Content: 100% Polyester
- Fabric is directional (color changes). Railroad whenever possible, through entire Public Space must be uniform in direction

**Blackout Lining (Meeting Room and Public Board Room)**

- Vendor: Roe-Ion
- Pattern/Color: Blackout 3-Pass White/White
- Marriott Material ID No.: 6449
- Width: 54" Wide
- Content: 100% Polyester
- Fabric is non-directional

**Lobby-Sheers Only**

**Standard Fabrication Details**

- Ripplefold
- Hanky hem with string weight
- Cord-operated traverse rods are not preferred
- 3" high drapery pocket in ceiling where possible, to conceal hardware and top hem (New Construction)
- Hardware is Forest Group USA #CM-512 or equal, mounted tight to ceiling. Ceiling mounted is preferred, however, if wall mounting is necessary please review with purchasing agent or designer.
- Drapery shall run floor-to-ceiling where ever possible, and create one consistent horizontal line.
- Drapery behind Media Pods, where clearances may be tight, may stop at raised sill to save space.
- Center draw is typical. Smaller windows may have side draw to reduce panels and batons. Drapery shall draw and frame the view beyond, not clutter the view beyond. Wide expanses of glass may require intermediate pairs of drapery

1. ALL INSTALLATIONS ARE TO OCCUR AFTER ALL PAINTING AND FINISH WORK IS COMPLETED AND AMBIENT TEMPERATURE AND HUMIDITY CONDITIONS ARE MAINTAINED TO INTENDED LEVEL.

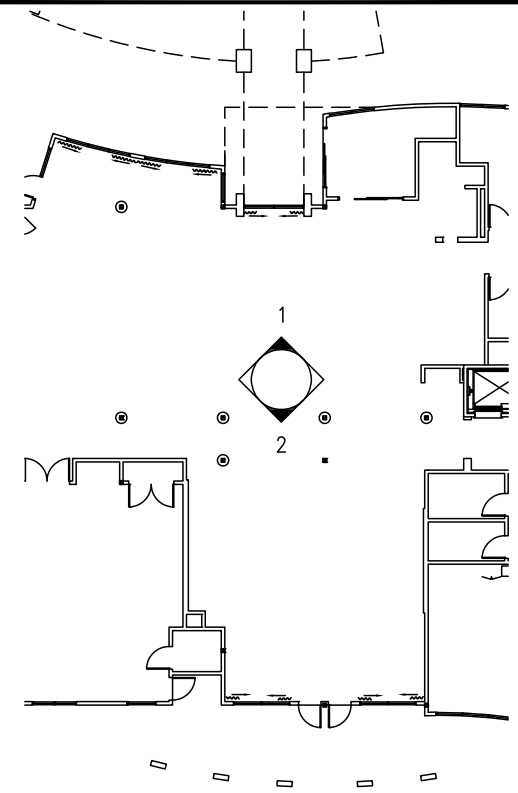
2. INSTALLER REQUIRED TO V.I.F. (VERIFY IN FIELD) ALL REQUIRED MEASUREMENTS AND SIRE CONDITIONS AND ADJUST DRAPERY ACCORDINGLY.

**Ceiling Height up to 11'-0" AFF**

- 120% Fullness
- Fully-operable
- White Batons to a 6'-0" maximum length
- Maximum height to the bottom of a baton is 5'-0" AFF
- Maximum height of manually-operated sheers is 11'-0"

**Ceiling Height of more than 11'-0" AFF (Fabric cannot be railroaded)**

- Stationary side hangings
- 120% fullness
- Hardware installed only where drapery hangs. Rods do not need to be continuous across entire length of window. If continuous rods are use, mechanical stops shall be installed to limit drapery traverse
- To frame the views beyond, side hangings shall project both into the window frame to cover the edge of glass, and beyond window frame to cover a portion of the adjacent wall area. Projections each side should be proportional to the span of glass, and wall area on each side.
- Additional light control, if required, shall be achieved on a property-by-property basis using tinted window film.



SHEER LM-100  
MATERIAL ID#210885 FABRIC BY  
PROCUREMENT  
FABRICATION AND INSTALLATION  
BY FABRICATOR



**KEY PLAN**

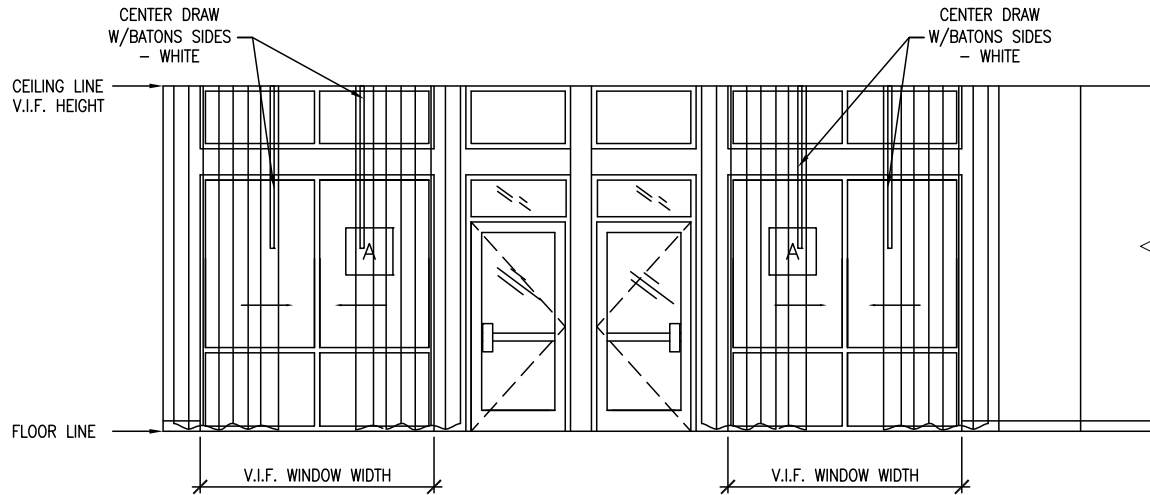
SCALE: N.T.S.



**GEN 4.5 TWILIGHT LOUNGE DRAPERY PLAN**

SCALE: NTS (NOT TO SCALE)

DATE ISSUED: 01/01/2010



1. ALL INSTALLATIONS ARE TO OCCUR AFTER ALL PAINTING AND FINISH WORK IS COMPLETED AND AMBIENT TEMPERATURE AND HUMIDITY CONDITIONS ARE MAINTAINED TO INTENDED LEVEL.

2. INSTALLER REQUIRED TO V.I.F. (VERIFY IN FIELD) ALL REQUIRED MEASUREMENTS AND SIRE CONDITIONS AND ADJUST DRAPERY ACCORDINGLY.



SHEER LM-100  
 MATERIAL ID#210885  
 FABRIC BY PROCUREMENT  
 FABRICATION AND INSTALLATION  
 BY FABRICATOR



LOBBY ELEVATION

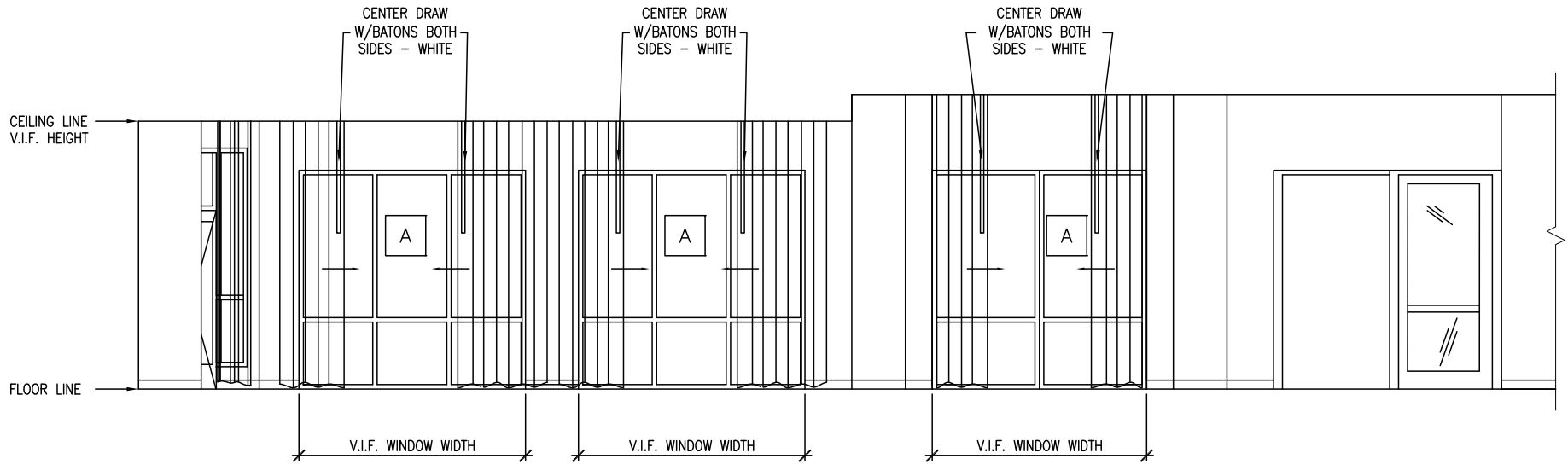
SCALE: NTS



GEN 4.5 TWILIGHT LOUNGE DRAPERY ELEVATION

SCALE: NTS (NOT TO SCALE)

DATE ISSUED: 01/01/2010



1. ALL INSTALLATIONS ARE TO OCCUR AFTER ALL PAINTING AND FINISH WORK IS COMPLETED AND AMBIENT TEMPERATURE AND HUMIDITY CONDITIONS ARE MAINTAINED TO INTENDED LEVEL.

2. INSTALLER REQUIRED TO V.I.F. (VERIFY IN FIELD) ALL REQUIRED MEASUREMENTS AND SIRE CONDITIONS AND ADJUST DRAPERY ACCORDINGLY.



SHEER LM-100  
 MATERIAL ID#210885  
 FABRIC BY PROCUREMENT  
 FABRICATION AND INSTALLATION  
 BY FABRICATOR



**LOBBY ELEVATION**

SCALE: NTS



GEN 4.5 TWILIGHT LOUNGE DRAPERY ELEVATION

SCALE: NTS (NOT TO SCALE)

DATE ISSUED: 01/01/2010

A

SHEER MR-100  
MATERIAL ID#210885  
FABRIC BY PROCUREMENT  
FABRICATION AND INSTALLATION  
BY FABRICATOR

B

BLACK-OUT LINING MR-101  
MATERIAL ID#6449  
FABRIC BY PROCUREMENT  
FABRICATION AND INSTALLATION  
BY FABRICATOR

**Public Space Window Covering Specifications**

**Meeting Room and Public Board Room - Sheers with Blackout Lining**

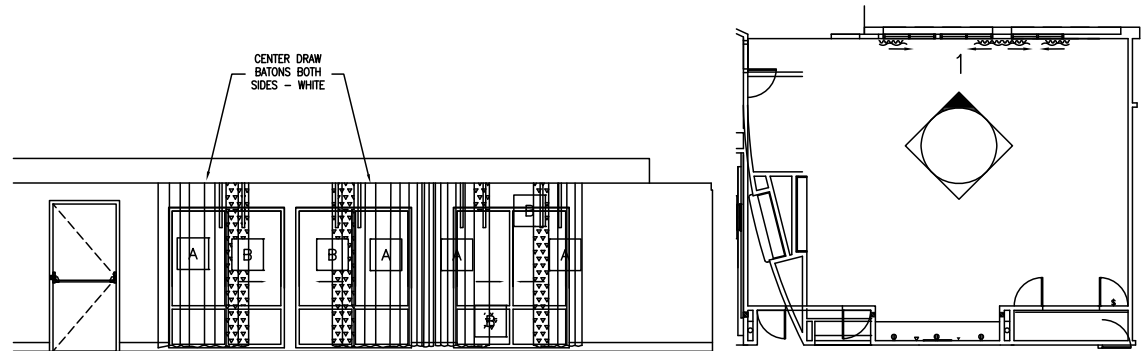
**Sheer Fabrication Details**

- Ripplefold @ 120% Fullness
- Hanky hem with string weight
- Drapery shall run floor-to-ceiling where ever possible, and create on consistent, horizontal line
- 3" high drapery pocket in ceiling where possible to conceal hardware and top hem (New Construction)
- Fully-Operable
- Cord-operated traverse rods are not preferred
- Hardware to be mounted tight to ceiling. Ceiling mounted is preferred, however, if wall mounting is necessary, please review with Procurement Agent or Designer
- White batons to a 6'-0" maximum length
- Maximum height to the bottom of a baton is 5'-0" A.F.F.>
- Maximum height of manually-operated sheers is 11'-0"
- Blackout drapery hung behind sheers. No over drapery.
- Remove any valance or cornice and do not replace

**Blackout Lining Fabrication Details**

- Ripplefold @ 120% Fullness
- 1/2" double-fold, clean finish hem
- A plastic covered 1" x 1" weight secured in each corner
- French seams a panel seams

*Meeting Room and Public Board Room fire egress doors and associated exit signage shall not, nor have the potential to be covered by drapery. If light control is required, the use of blackout film applied to the glass portion of a door and side light is preferred, and approved on a property-by-property basis. The film shall coordinate with the décor of the room, and color of the adjacent door frame.*



1. ALL INSTALLATIONS ARE TO OCCUR AFTER ALL PAINTING AND FINISH WORK IS COMPLETED AND AMBIENT TEMPERATURE AND HUMIDITY CONDITIONS ARE MAINTAINED TO INTENDED LEVEL.

2. INSTALLER REQUIRED TO V.I.F. (VERIFY IN FIELD) ALL REQUIRED MEASUREMENTS AND SIRE CONDITIONS AND ADJUST DRAPERY ACCORDINGLY.



**MEETING ROOM ELEVATION & PLAN**

SCALE: NTS



**GEN 4.5 TWILIGHT MEETING ROOM DRAPERY**

SCALE: NTS (NOT TO SCALE)

DATE ISSUED: 01/01/2010

A

SHEER MR-100  
MATERIAL ID#200917  
FABRIC BY PROCUREMENT  
FABRICATION AND INSTALLATION  
BY FABRICATOR

**CORRIDORS - SHEERS ONLY**

*Standard Fabrication Details*

Ripplefold

Hanky hem with string weight

Cord-operated traverse rods are not preferred

3" high drapery pocket in ceiling where possible to conceal hardware and top hem (New Construction)

Hardware is Forest Group USA #CM-512 or equal, mounted tight to ceiling not wall-mounted brackets

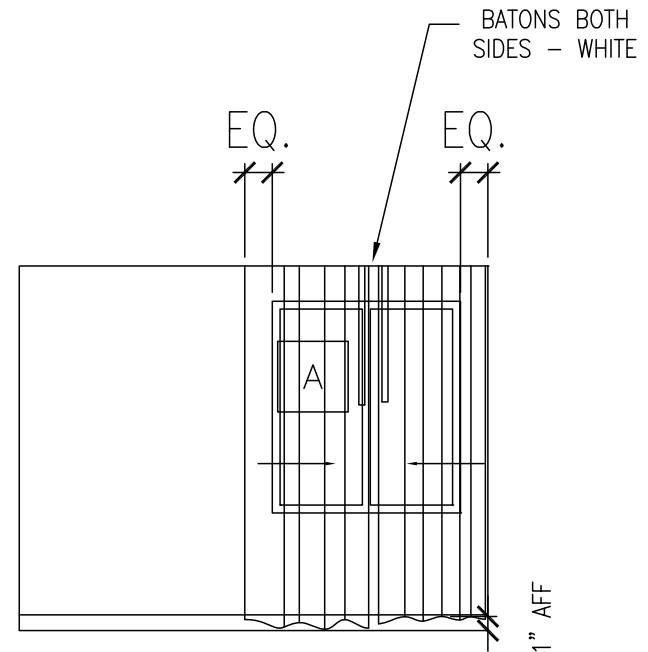
Center draw typical.

*Ceiling height up to 8'-0" AFF*

120% Fullness

Fully-operable

White batons to a 3'-0" maximum length



1. ALL INSTALLATIONS ARE TO OCCUR AFTER ALL PAINTING AND FINISH WORK IS COMPLETED AND AMBIENT TEMPERATURE AND HUMIDITY CONDITIONS ARE MAINTAINED TO INTENDED LEVEL.

2. INSTALLER REQUIRED TO V.I.F. (VERIFY IN FIELD) ALL REQUIRED MEASUREMENTS AND SIRE CONDITIONS AND ADJUST DRAPERY ACCORDINGLY.



**CORRIDOR ELEVATION**

SCALE: NTS



**CORRIDOR DRAPERY**

SCALE: NTS (NOT TO SCALE)

DATE ISSUED: 03/08/10

## Public Space Window Covering Specifications

### *Sheer Fabric (Lobby, Meeting Room and Public Board Room)*

- Vendor: P/Kaufman Contract
- Pattern/Color: Mod Mini Sheer/Custom Bronze
- Marriott Material ID No.: 210885
- Width: 118" Wide
- Content: 100% Polyester
- Fabric is directional (color changes). Railroad whenever possible, through entire Public Space must be uniform in direction

### *Blackout Lining (Meeting Room and Public Board Room)*

- Vendor: Roc-lon
- Pattern/Color: Blackout 3-Pass White/White
- Marriott Material ID No.: 6449
- Width: 54" Wide
- Content: 100% Polyester
- Fabric is non-directional

### **Lobby-Sheers Only**

#### *Standard Fabrication Details*

- Ripplefold
- Hanky hem with string weight
- Cord-operated traverse rods are not preferred
- 3" high drapery pocket in ceiling where possible, to conceal hardware and top hem (New Construction)
- Hardware is Forest Group USA #CM-512 or equal, mounted tight to ceiling. Ceiling mounted is preferred, however, if wall mounting is necessary please review with purchasing agent or designer.
- Drapery shall run floor-to-ceiling where ever possible, and create one consistent horizontal line.
- Drapery behind Media Pods, where clearances may be tight, may stop at raised sill to save space.
- Center draw is typical. Smaller windows may have side draw to reduce panels and batons. Drapery shall draw and frame the view beyond, not clutter the view beyond. Wide expanses of glass may require intermediate pairs of drapery

## Public Space Window Covering Specifications

### *Meeting Room and Public Board Room – Sheers with Blackout Lining*

#### *Sheer Fabrication Details*

- Ripplefold @ 120% Fullness
- Hanky hem with string weight
- Drapery shall run floor-to-ceiling where ever possible, and create on consistent, horizontal line
- 3” high drapery pocket in ceiling where possible to conceal hardware and top hem (New Construction)
- Fully-Operable
- Cord-operated traverse rods are not preferred
- Hardware to be mounted tight to ceiling. Ceiling mounted is preferred, however, if wall mounting is necessary, please review with Procurement Agent or Designer
- White batons to a 6’-0” maximum length
- Maximum height to the bottom of a baton is 5’-0” A.F.F>
- Maximum height of manually-operated sheers is 11’-0”
- Blackout drapery hung behind sheers. No over drapery.
- Remove any valance or cornice and do not replace

#### *Blackout Lining Fabrication Details*

- Ripplefold @ 120% Fullness
- ½” double-fold, clean finish hem
- A plastic covered 1” x 1” weight secured in each corner
- French seams a panel seams

*Meeting Room and Public Board Room fire egress doors and associated exit signage shall not, nor have the potential to be covered by drapery. If light control is required, the use of blackout film applied to the glass portion of a door and side light is preferred, and approved on a property-by-property basis. The film shall coordinate with the décor of the room, and color of the adjacent door frame.*



9'-0" OR  
GREATER

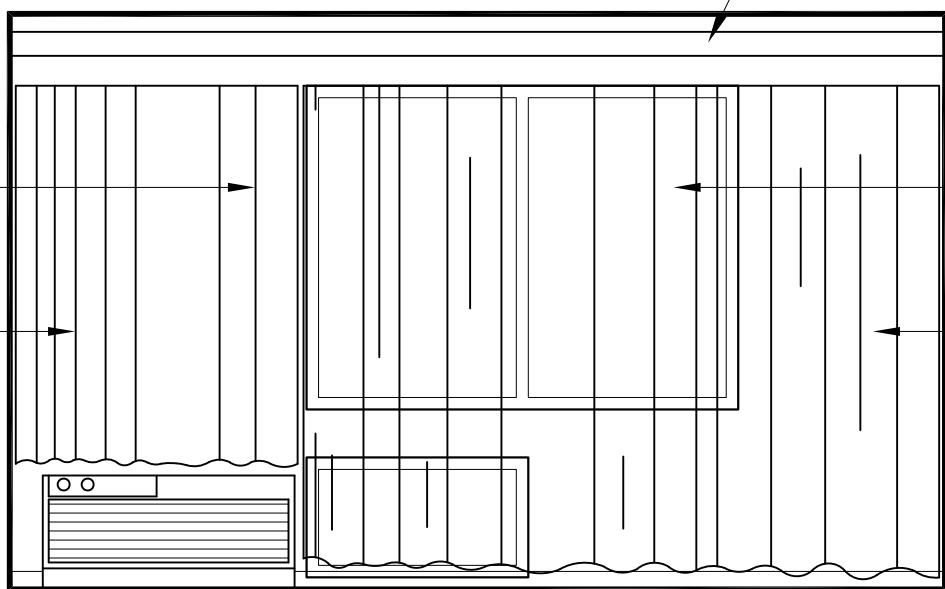


TYPICAL PARTIAL ELEVATION @ 1ST FLOOR

PAINTED WOOD CORNICE

X-101: 129714  
STATIONARY  
SHEER/  
DRAPERY

X-102L: 6449  
STATIONARY  
BLACKOUT  
LINER



X-101: 129714  
TRAVERSING  
SHEER/  
DRAPERY

X-102L: 6449  
TRAVERSING  
BLACKOUT  
LINER

TYPICAL CONDITION: CEILING MOUNTED

X-101	TRAVERSING SHEER - MOD GLISTEN (118); MARTINI - #129714 - 250% FULLNESS & HANKY HEM. STRIPE TO RUN HORIZONTALLY.
X-102L	BLACKOUT LINER - 3 PASS BLACKOUT (54); WHITE/WHITE - #6449 - 200% FULLNESS; 1/2" CLEAN FINISH HEM.



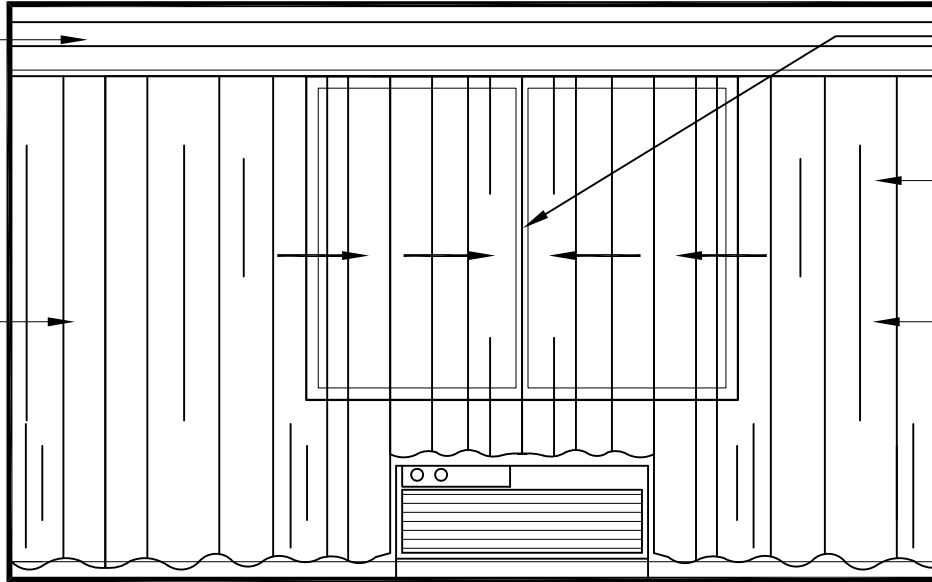
FACETS GUESTROOM DRAPERY ELEVATION  
CEILING MOUNT 2 TRACK SYSTEM

SCALE: 3/8" = 1'-0"

PAINTED WOOD CORNICE

X-101: 129714  
STATIONARY  
SHEER/  
DRAPERY

X-102L: 6449  
STATIONARY  
BLACKOUT  
LINER



CENTER OPENING:  
TRAVERSING BLACK-OUT: X-102L  
TRAVERSING SHEER: X-101

X-101: 129714  
TRAVERSING  
SHEER/  
DRAPERY

X-102L: 6449  
TRAVERSING  
BLACKOUT  
LINER

X-101	TRAVERSING SHEER - MOD GLISTEN (118); MARTINI - #129714 - 250% FULLNESS & HANKY HEM. STRIPE TO RUN HORIZONTALLY.
X-102L	BLACKOUT LINER - 3 PASS BLACKOUT (54); WHITE/WHITE - #6449 - 200% FULLNESS; 1/2" CLEAN FINISH HEM.

COURTYARD CENTERED PTAC SITE CONDITION:

PAINTED WOOD CORNICE CEILING MOUNTED WALL TO WALL - SUPPLIED BY GC

HARDWARE - 2 TRACKS CEILING MOUNTED WALL TO WALL

2 SHORT TRAVERSING TREATMENTS OVER PTAC

1 BLACKOUT LINER - CENTER OPENING WITH BATON

1 SHEER - CENTER OPENING WITH BATON

2 LONG TRAVERSING TREATMENTS ON EITHER SIDE OF PTAC UNIT

2 BLACKOUT LINERS - ONE WAY DRAW FROM EACH WALL TO PTAC (NO BATONS)

2 SHEERS - ONE WAY DRAW FROM EACH WALL TO PTAC (NO BATONS)

EACH OF THE SHORT & LONG PANELS NEED TO BE MADE PER THE BRAND/SCHEME SPECIFICATIONS AND MADE INDEPENDENT & COMPLETE.

BLACKOUT LINER - THE OVERLAP OF THE LONG PANEL IS PLACED ON TOP OF THE RETURN EDGE OF THE SHORT (PTAC) PANEL OVERLAPPING ONLY THE 1 1/2" SIDE HEMS. THE PANELS ARE SEWN TOGETHER THE LENGTH OF THE 4" HEADER, ON BOTH SIDES OF THE HEMS. CONTINUE SEWING DOWN THE OVERLAP EDGE JOINING TOGETHER BOTH PANELS WITH ONE ROW OF STITCHING FROM THE HEADER TO THE BOTTOM HEM TO ELIMINATE LIGHT LEAKAGE.

SHEERS - THE OVERLAP OF THE LONG PANEL IS PLACED ON TOP OF THE RETURN EDGE OF THE SHORT (PTAC) PANEL. COMPLETELY OVERLAPPING THE ENTIRE 3 1/2" OVERLAP AND RETURN. SEW THE LENGTH OF THE 4" HEADER ON THE LEADING OUTSIDE EDGE AND ON THE INSIDE EDGE NEXT TO THE PLEAT ONLY. DO NOT JOIN THE 2 PANELS FROM THE LEADING EDGE TO THE BOTTOM HEM.

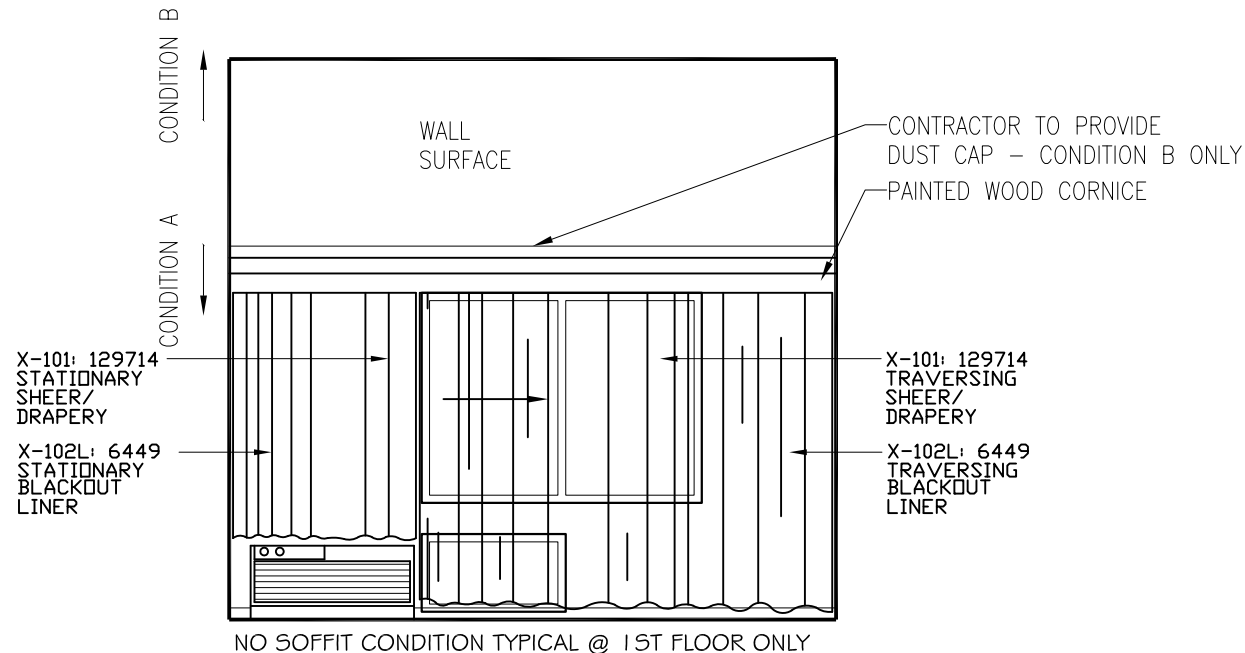
WHEN THE DRAPERY IS OPENED, IN THE STACKING POSITION, THERE WILL BE APPROXIMATELY 10" OF THE SHRT PANEL EXTENDING OUT FROM THE LONG PANEL.



# FACETS GUESTROOM DRAPERY ELEVATION

CONDITION "C" CENTERED PTAC UNIT

SCALE: 3/8" = 1'-0"



A	GUESTROOM CEILING HEIGHT 9'-0" OR LESS W/D SOFFIT DRAPERIES & CORNICE CEILING MOUNTED
B	GUESTROOM CEILING HEIGHT 9'-1" OR GREATER W/D SOFFIT DRAPERIES & CORNICE (W/ DUST CAP) WALL MOUNTED @ 9'-0"
X-101	TRAVERSING SHEER - MOD GLISTEN (118); MARTINI - #129714 - 250% FULLNESS & HANKY HEM. STRIPE TO RUN HORIZONTALLY.
X-102L	BLACKOUT LINER - 3 PASS BLACKOUT (54); WHITE/WHITE - #6449 - 200% FULLNESS; 1/2" CLEAN FINISH HEM.

**COURTYARD NO SOFFIT HIGH CEILINGS @ 1ST FLOOR SITE CONDITION:**

PAINTED WOOD CORNICE CEILING MOUNTED WALL TO WALL W/ WOOD DUSTER - SUPPLIED BY GC  
 HARDWARE - 2 TRACKS CEILING MOUNTED WALL TO WALL

1 SHORT TRAVERSING TREATMENTS OVER PTAC

1 BLACKOUT LINER - ONE-WAY DRAW OPENING WITH BATON

1 SHEER - ONE-WAY DRAW OPENING WITH BATON

1 LONG TRAVERSING TREATMENTS

1 BLACKOUT LINERS - ONE WAY DRAW FROM WALL TO PTAC (NO BATONS)

1 SHEERS - ONE WAY DRAW FROM WALL TO PTAC (NO BATONS)

EACH OF THE SHORT & LONG PANELS NEED TO BE MADE PER THE BRAND/SCHEME SPECIFICATIONS AND MADE INDEPENDENT & COMPLETE.

BLACKOUT LINER & SHEERS: SHORT PANEL (OVER PTAC UNIT) TO BE STATIONARY. THE LONGER PANEL IS TO TRAVERSE FROM CENTER. TRAVERSING PANEL TO OVERLAP STATIONARY PANEL.



# FACETS GUESTROOM DRAPERY ELEVATION

## SITE CONDITION - NO SOFFIT

SCALE: 1/4" = 1'-0"

THE HARDWARE FOR THE GUEST ROOMS FROM FOREST GROUP USA IS:

TRACK 510-25 WHITE

MASTERS 52502-25 AND 52504-25

END CAPS 52301-25

BALL BEARING CARRIERS 52000-25

BATONS 3' WHITE FIBERGLASS FOR A STD RM 8' CEILING

BATONS 4' WHITE FIBERGLASS FOR A STD ADA 8' CEILING

THE HARDWARE FOR THE GUEST ROOMS FROM KIRSCH IS:

TRACK 94004-25 WHITE

MASTERS 94133-25 AND 94134-25

END CAPS 94142-25

BALL BEARING CARRIERS 9670-25

BATONS 3' WHITE FIBERGLASS FOR A STD RM 8' CEILING

BATONS 4' WHITE FIBERGLASS FOR A STD ADA 8' CEILING



FACETS GUESTROOM DRAPERY HARDWARE