

MIDCS Window Treatment General Specifications Marriott International

The following are the specifications for window treatments used by Marriott International. Any deviation, modification or other changes must be discussed with the appropriate purchasing agent verbally and confirmed in writing with documents and pictures clearly showing all changes and locations on the items. All window treatment items must meet or exceed the specifications contained within this document. All Marriott International window treatment or related window treatment products fabricators are responsible for the design and functional performance of any window treatment product they provide. If a design allows for light leakage, it shall be called to the purchasing agent's attention. Each fabricator is responsible for providing review samples as needed. All fabricators are responsible for **always** obtaining approval from the appropriate purchasing agent prior to starting production.

Fabrics, General

- All fabrics used in window treatment **MUST** meet the codes in the next section. (The fabricator is not responsible for these codes if the fabric is COM).
- If defects are found which will affect production, the purchasing agent shall be contacted immediately so that disposition of the defective fabric may be worked out.

Fabrics, Codes

- **Abrasion Resistance, All Decorative Fabrics:** Wyzenbeek: ASTM D4157-02; 20,000 double rubs back and forth motion, #10 Duck; Martindale, 25,000 double rubs, ASTM D4966-98; 12 KPa pressure; Circular Motion, #10 Duck; (Although there are no abrasion standards for sheers, they should be constructed sufficiently to prevent yarn separation during commercial use).
- **Flammability, Window Treatment:** All items, including drapes, sheers, fabric valances, swags, jabots, or any other window treatment: *NFPA 701-04, Test Method 1* (Vinyl coated blackout, Test Method 2) and BFD1X-1 Boston, in addition to local jurisdictional requirements. **(Custom one-off window projects do not need BFDIX-1 if NOT used within the city limits of Boston).** This treatment **MUST** be inherent, not topical. *All BFDIX-1 items require a permit from the Boston Fire Department:* To get Boston Permits, go to <http://www.cityofboston.gov/fire/>, Permits and Applications section.
- **Colorfastness to Light – AATCC 16 Option 1 or 3-2003:** Drapery fabrics: 60 Hours, Grade 4.
- **Wet and Dry Crocking, All Fabrics, 4.0 Dry, 3.5 Wet –AATCC 8-200:** (Except prints: AATCC 116—2001).
- **Tensile Strength. Fabrics – ASTM D5034-95 (2001) (Grab Test):** **25 lbs. for over 6 Ounce/yd. squared Drapery & 15 lbs. for less than 6 Ounce.**
- **Fabrics & Black Out** - No PBDE's (Polybromide Diphenyl Ethers) shall be used and formaldehyde content shall be below the allowable threshold limit.

Performance

- All draperies, hardware and installation shall be provided in accordance with the specifications contained herein and **shall not have deviations other than orders written and issued by the purchasing agent.**

WINDOW TREATMENT GENERAL SPECIFICATIONS

Measurement and Project Quotation

- The fabricator is responsible for taking measurements at the job sites and for dimension accuracy in their quotations.
- The fabricator shall make no variations, additions, or deletions to the contract issued by the purchasing agent without a confirmed addendum.
- Tentative start dates shall be provided by the purchasing agent at the time the quotation is requested. It is the responsibility of the contractor to call the purchasing agent periodically to insure the install date has not changed.
- The fabricator shall be responsible for forwarding quotations to the purchasing agent within six (6) weeks of the installation start dates for new builds and within eight (8) weeks for renovations.
- Hardware and parts shall be itemized, priced and listed separately.

Material & Services Provided by Fabricator

- Unless other provisions are made, the fabricator shall:
 - Provide all raw materials except COM drape/sheer fabrics and blackout.
 - Provide proper storage for all fabrics, materials and equipment.
 - Maintain a current inventory & report it to the purchasing agent monthly.
 - Provide the purchasing agent with scaled sections of any non-prototypical (custom) window treatment before fabrication is begun.
 - Advise the purchasing agent immediately when it is known that rooms will not be available on dates installs are schedule.
 - Advise the purchasing agent immediately when issues arise that may affect install schedules or overall quality.
 - Ensure that all install staff is neatly attired with the fabricator's name prominently displayed so as to be quickly identified.
 - Furnish supervision and installers acceptable to the purchasing agent's representative on the job site.
 - Supply all labor, transportation equipment, appliances, and service necessary to furnish completed window treatment.
 - Make all necessary adjustments in the Work as may be required to render the Work in proper condition suitable for final acceptance.
 - Notify the purchasing agent if steaming is required as soon as it is known to determine if the project has the additional funds to cover the steaming costs.
 - Remove all generated trash daily from the job site.
 - Ensure that all fabrication and installation sub-contractors return to the job and make any needed adjustments, repairs, lengthening or shortening as may be considered necessary by the purchasing agent.
 - Assume all costs stemming from defects caused by the fabricator, including the replacement of fabrics due to poor workmanship, shrinkage (pertaining to hems) due to improper styling or size as specified herein.
 - Show proof of performance and delivery as required.
- If requested, fittings and supplies such as buckram, weights, thread, and samples shall be submitted to the purchasing agent for approval before fabrication has started.

Applicable to all Fabrication

- All drapes and sheers shall be made with the required widths of fabric specified and never shall less than one-half of a width be used in any panel. All ceiling-to-floor draperies and sheers shall fall to

WINDOW TREATMENT GENERAL SPECIFICATIONS

¾" to 1" from the carpet or any finished floor surface, unless otherwise noted on the drawings. All ceiling-to-PTAC, bench or other surface elevated from the floor surface treatments shall fall to ½" from the top of the elevated surface unless otherwise specified.

- All selvages shall be removed, patterns shall be matched; drapes and sheers shall be made to exact size.
- All corners on the bottom hem shall be mitred. Face fabric hems shall be blind-stitched. The thread shall be poly-cotton and color matched.
- If center-close, the overlaps shall be 3 ½" with the buckram double folded back.
- The returns shall be 3" to 6" depending on the application with the double fold back of the return.
- If specified, all slant tops shall follow the angle of the window and all pleats shall be upright. All bottom hems shall be level.
- All seams shall be overlock stitched (serged) with safety stitches, and all seams shall be hidden at the side of the pleat, or back of the ripple fold, using poly/cotton neutral-color thread, unless otherwise specified.
- The side hems shall be 1 ½", blind stitched and double folded using poly/cotton thread.
- If the drapes are not wall-to-wall, the fabrication is to ensure that the returns reach the walls the drapes cover.

Drapes Fabrication

- Applicable to all pinch pleat drapes:
 - Headings shall be 4" and double folded with permanent finished buckram, double-back folds at the overlaps and returns and sewn closures using poly/cotton thread.
 - Unless otherwise specified, drapes shall be 200% fullness (fabric used is twice the width of the finished drape) Exception: Public space and suites should use 250% to 300% fullness. **(NOTE: Fullness varies by brand and property. If the properties do not adhere to prototypical designs, please consult with the purchasing agent or design firm. If the fullness is not specified, consult with the purchasing agent or design firm).**
 - Stationary side panel pleats shall be tacked down with matching thread and the fullness shall be 200%. The hem shall be the standard double 4".
 - If triple fold French pleats are specified, they shall be machine sewn with 14 thread bar, "L" tacked or "F" tacked 1/2" inch up from the bottom of the buckram, using poly/cotton thread.
- Applicable to all ripple fold drapes:
 - The fullness range shall be 60%, 80%, 100% or 120% as specified per project.
- Lined drapes:
 - The buckram shall be inserted between the face fabric and the lining and stitched across the top. On overlaps and returns, double fold the buckram back by 12".
 - The lining shall extend to the top of the finished drapery (Pillow case top), and all the way to the sides.
 - The lining fabric shall be 2" straight single needle lockstitched with a single turn-up above face fabric using poly/cotton thread.
 - The bottom hem of the face fabric shall be double folded by 4" using straight single-needle lock stitches, with poly/cotton thread. The side hems shall be 1 ½" and blind stitched with the lining extending to the edge of the drapery using poly/cotton thread.
 - 1" covered lead weights shall be tacked into the hemline on each seam and corner of the face fabric. It is not required in the lining.

Sheers Fabrication

- Applicable to all sheers:

WINDOW TREATMENT GENERAL SPECIFICATIONS

- Unless otherwise specified, the fullness shall be 250% to 300%, except for ripple fold. **(NOTE: Fullness varies by brand and property. If the property does not adhere to prototypical designs, please consult with the purchasing agent or design firm. If the fullness is not specified, consult with the purchasing agent or design firm).**
- The bottom hems shall be 4", double folded and sewn using straight single needle lockstitches with poly/cotton thread. Lobbies and suites bottom hems shall be blindstitched. Hanky hems may be specified. (Bottom weight serged in the hem)
- The side hems shall be 1 ½", blind stitched and double folded using poly/cotton thread.
- Kirsch or Kirsch style weighted tape shall be used the entire length of the bottom hems at or near the bottom.
- The overlaps shall be 3 ½" with double fold back of the buckram.
- The returns shall be 3" inches with double fold back of the buckram.
- Applicable to all ripple fold sheers:
 - The fullness range shall be 120%, or as specified per project.
- Pinch pleat:
 - Headings shall be 4" and double folded with permanent finished buckram, double-back folds at the overlaps and returns and sewn closures using poly/cotton thread.
 - If triple-fold French pleats are selected, they shall be machine sewn with 14 thread bar or "L" tacked 1/2" inch up from the bottom of the buckram, using poly/cotton thread.

Blackout

- The seams joining the blackout shall be ½" "Z" type.
- Fabrication shall be done so that pin holes are minimized.
- If the blackout is 2-color, the side facing the room shall be specified by the purchasing agent and verified by the fabricator.

Cornice Fabrication and Installation

- The fabricator shall construct and install cornices as follows, unless otherwise specified:
 - 1/2" particleboard shall be used. Plywood is not authorized.
 - 5 ounce fill or padding, flame retardant shall be used.
 - 1" by 2" inch header board shall be used.
 - Self cord welt top, bottom and sides shall be used.
 - The lining shall be blind tacked with tackless stripping on the bottom to hide the staples.
 - Stainless steel staples shall be used.
 - All cornice installations shall use "L" brackets on the walls and "Z" brackets on ceilings.
 - A full width of fabric shall be centered on the cornice with seams equidistant from each end.
 - If the cornices are not self lined, the fabricator shall ensure that the lining fabric has an FR rating suitable to the jurisdiction in which it is installed.

Hardware

All hardware shall be of commercial quality and workmanship and shall be Kirsch or Kirsch style. The following are specific area requirements that shall be followed:

- All hardware shall be commercial grade.
- Tracks shall be extruded aluminum only.
- **All** metal components, including but not limited to master carriers, ball bearings, baton screws and baton key rings shall be stainless steel.
- Fiberglass batons shall be used and shall be rounded at both ends. ADA batons shall have their bottom ends hanging 48" off the floor. (Note: ADA batons MAY be acrylic if fiberglass is not available).

WINDOW TREATMENT GENERAL SPECIFICATIONS

- Acrylic batons are never appropriate except for ADA applications.
- All hooks shall be stainless steel and Kirsch or Kirsch quality.
- All masters shall be wheeled and there shall be 6 to 8 included.

Hanging Finished Window Treatment

- All window treatments shall be mounted so that they do not separate from the wall or ceiling.
- All drapes and sheers shall be hung so that they drape properly (When viewed from the top, the fabric drapes in a continuous "S" pattern). Check buckram and break it if needed to insure S folds start at the buckram and flow to the floor.
- All pinch pleat draperies shall be pinned and hung evenly with appropriate pin-on hooks except for draperies over 12 feet long. They shall be hung using sew-on hooks.
- Angle brackets shall be attached to the wall with a screw to attach the return. Tenter hooks shall not be used.
- If needed in instances where the draperies end at doorways, the fabricator shall install a Lucite cuff mounted against mullion and lined up with the doorknob. (The cuff shall be supplied by the fabricator as part of the original quote and shall be billed to the purchasing agent. In cases where it is not part of the quote, it shall be billed as a separate item).
- All sheers shall be hung so that they are not visible at any edge when the drapes are in their closed position.

Vendor List



Transformations Public Space & Facets Guestroom – New Build

Vendor List

ABSOCOLD CORP
AC FURNITURE CO, INC
AMTREND CORPORATION
AQUA HOSPITALITY
ARCHITECTURAL SUPPLEMENTS LLC
ARTISTIC FRAMING INC
ASHLEY LIGHTING INC
BRG PRECISION PRODUCTS
BRINTONS US AXMINSTER
BROWN JORDAN COMPANY INC
CARSONS INC
CHALLENGER LIGHTING
D'STYLE INC
DELTROPICO DESIGNS LLC
EYKON WALL SOURCE
FAIRMONT DESIGNS HOSPITALITY GROUP INC
FALCON
FARMBOY FINE ARTS & DESIGN CANADA
FLOS INC
FORBES INDUSTRIES INC
GLOBAL VIEWS
GOLD LEAF DESIGN GROUP
GRAINGER INC
J G EDELEN CO INC
JAMISON BEDDING INC
JDT INTERNATIONAL LLC
JL FURNISHINGS LLC
KARTRI SALES CO INC
KICHLER LIGHTING
KIMBALL LODGING GROUP
LEGGETT & PLATT INC
LG ELECTRONICS USA INC
LIFE FITNESS
LODGING BY LIBERTY INC
MAJESTIC MIRROR & FRAME INC
MDC WALLCOVERINGS
MILTON A BLEIER COMPANY
MTS SEATING INC
OFS
P KAUFMANN CONTRACT
PEERLESS INDUSTRIES INC
PERMANENT FOLIAGE INC
PLANTSCAPING INC
QUOIZEL INC
ROCKLAND INDUSTRIES INC
SCOTT LAMP CO INC
SEALY MATTRESS COMPANY
SERTA MATTRESS CO
SHAW INDUSTRIES INC
SHELBY WILLIAMS INDUSTRIES INC
SIMMONS BEDDING
SK TEXTILE INC
SOUTHERN ALUMINUM MANUFACTURING INC
SPONGE CUSHION INC
TAI PING CARPETS INC
TECHNICAL CONSUMER PRODUCTS INC
THE UTTERMOST CO
TREND LIGHTING CORP INC
TRINITY LIGHTING INC
UNILIGHT LIMITED CANADA
US BUSINESS INTERIORS
VALLEY FORGE TEXTILES
VAN TEAL INC
VIRGINIA QUILTING INC

Window Treatment Elevations and Specifications

PUBLIC SPACE WINDOW COVERING SPECIFICATIONS

Sheer Fabric (Lobby, Meeting Room and Public Board Room)

- Valley Forge Textiles
- "Citrus Sheer 2" # 616-DMM
- Marriott Material ID #200917
- 118" wide
- 100% polyester
- Fabric is directional. Railroad whenever possible, though entire Public Space must be uniform in direction

Blackout Lining (Meeting Room and Public Board Room)

- Roc-Lon
- "Denimtone" Color: Mustard BO
- Marriott Material ID #204868
- 54" wide
- 100% polyester
- Fabric is non-directional
- White side to the window

LOBBY – SHEERS ONLY

Standard Fabrication Details

- Ripplefold
- Hanky hem with string weight
- Cord-operated traverse rods are not preferred
- 3" high drapery pocket in ceiling where possible to conceal hardware and top hem (New Construction)
- Hardware is Forest Group USA #CM-512 or equal, mounted tight to ceiling. Wall-mounted brackets are not acceptable.
- Drapery shall run floor-to-ceiling wherever possible, and create one consistent, horizontal line.
- Drapery behind Media Pods, where clearances may be tight, may stop at raised sill to save space.
- Center draw typical. Smaller windows may have side draw to reduce panels and batons. Drapery shall draw and frame the view beyond, not clutter the view beyond. Wide expanses of glass may require intermediate pairs of drapery.

Ceiling height up to 11'-0" AFF

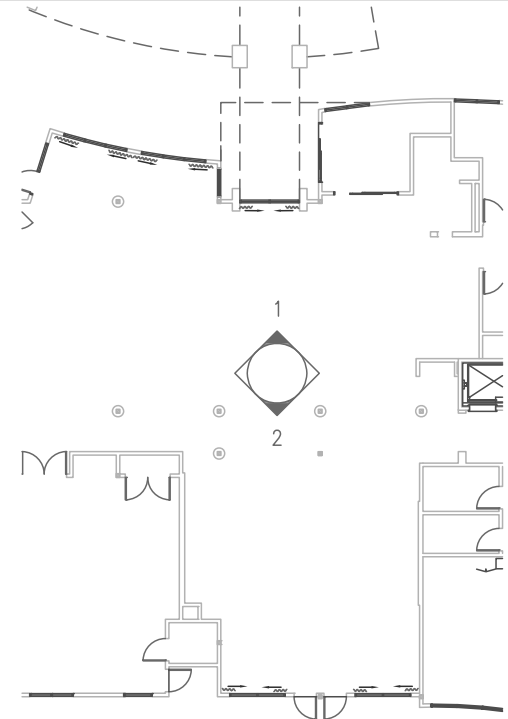
- 120% Fullness
- Fully-operable
- White batons to a 6'-0" maximum length
- Maximum height to the bottom of a baton is 5'-0" AFF
- Maximum height of manually-operated sheers is 11'-0"

1. ALL INSTALLATIONS ARE TO OCCUR AFTER ALL PAINTING AND FINISH WORK IS COMPLETED AND AMBIENT TEMPERATURE AND HUMIDITY CONDITIONS ARE MAINTAINED TO INTENDED LEVEL.

2. INSTALLER REQUIRED TO V.I.F. (VERIFY IN FIELD) ALL REQUIRED MEASUREMENTS AND SIRE CONDITIONS AND ADJUST DRAPERY ACCORDINGLY.

Ceiling Heights of more than 11'-0" AFF (Fabric cannot be railroaded)

- Stationary side hangings
- 120% fullness
- Hardware installed only where drapery hangs. Rods do not need to be continuous across entire length of window. If continuous rods are used, mechanical stops shall be installed to limit drapery traverse.
- To frame the views beyond, side hangings shall project both into window frame to cover the edge of glass, and beyond window frame to cover a portion of the adjacent wall area. Projections each side should be proportional to the span of glass, and wall area on each side.
- Additional light control, if required, shall be achieved on a property-by-property basis using tinted window film



A

SHEER LM-100
 MATERIAL ID#200917
 FABRIC BY PROCUREMENT
 FABRICATION AND INSTALLATION
 BY FABRICATOR



KEY PLAN

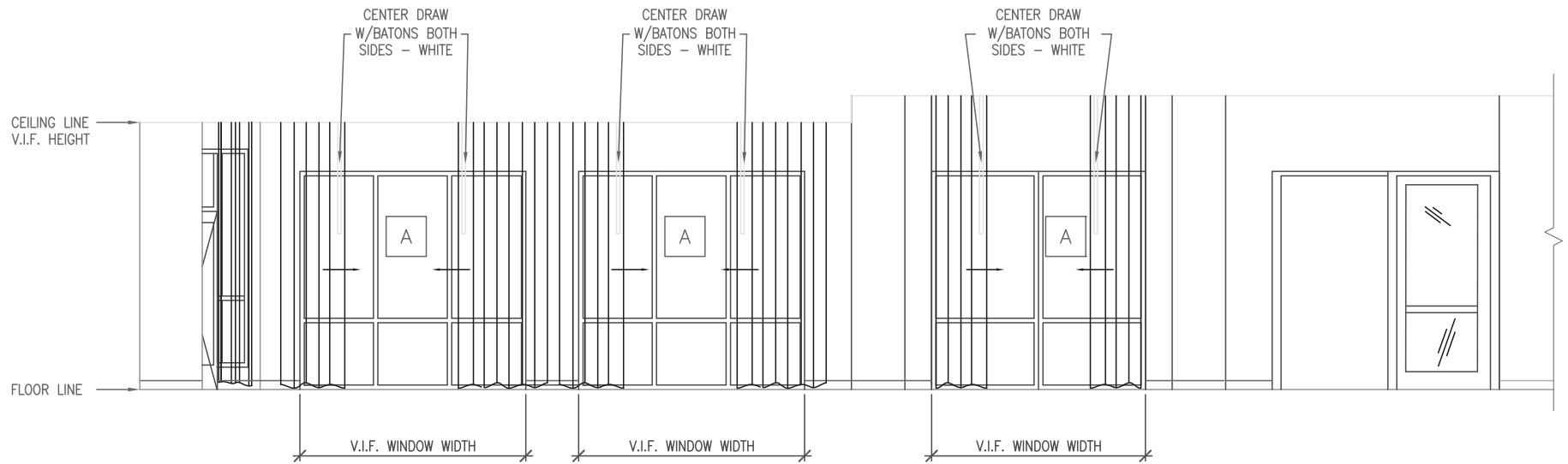
SCALE: N.T.S.



GEN 4.5 TRANSFORMATIONS LOUNGE DRAPERY PLAN

SCALE: NTS (NOT TO SCALE)

DATE ISSUED: 10/16/09



1. ALL INSTALLATIONS ARE TO OCCUR AFTER ALL PAINTING AND FINISH WORK IS COMPLETED AND AMBIENT TEMPERATURE AND HUMIDITY CONDITIONS ARE MAINTAINED TO INTENDED LEVEL.

2. INSTALLER REQUIRED TO V.I.F. (VERIFY IN FIELD) ALL REQUIRED MEASUREMENTS AND SIRE CONDITIONS AND ADJUST DRAPERY ACCORDINGLY.



SHEER LM-100
 MATERIAL ID#200917
 FABRIC BY PROCUREMENT
 FABRICATION AND INSTALLATION
 BY FABRICATOR



LOBBY ELEVATION

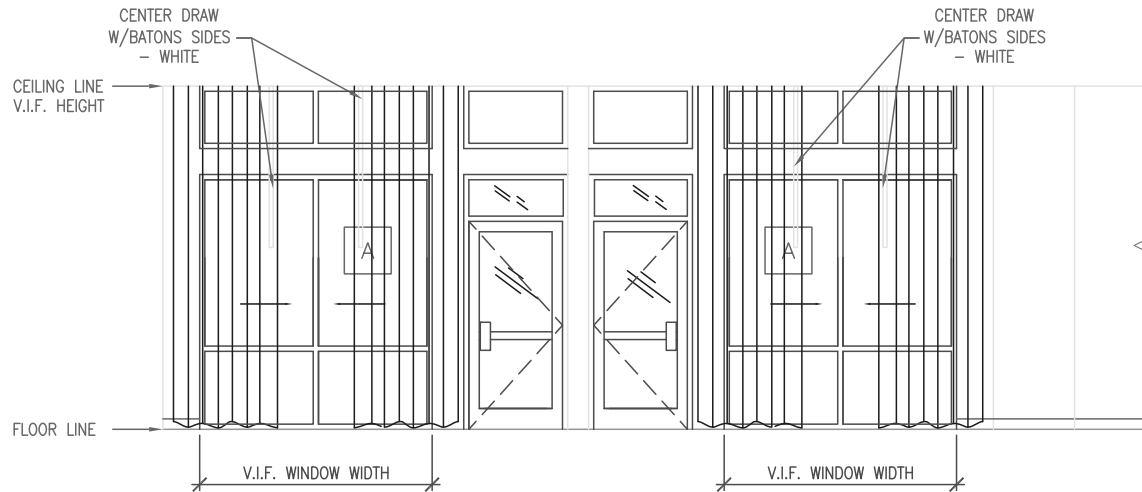
SCALE: NTS



GEN 4.5 TRANSFORMATIONS LOUNGE DRAPERY ELEVATION

SCALE: NTS (NOT TO SCALE)

DATE ISSUED: 10/16/09



1. ALL INSTALLATIONS ARE TO OCCUR AFTER ALL PAINTING AND FINISH WORK IS COMPLETED AND AMBIENT TEMPERATURE AND HUMIDITY CONDITIONS ARE MAINTAINED TO INTENDED LEVEL.

2. INSTALLER REQUIRED TO V.I.F. (VERIFY IN FIELD) ALL REQUIRED MEASUREMENTS AND SIRE CONDITIONS AND ADJUST DRAPERY ACCORDINGLY.



SHEER LM-100
 MATERIAL ID#200917
 FABRIC BY PROCUREMENT
 FABRICATION AND INSTALLATION
 BY FABRICATOR



LOBBY ELEVATION

SCALE: NTS



GEN 4.5 TRANSFORMATIONS LOUNGE DRAPERY ELEVATION

SCALE: NTS (NOT TO SCALE)

DATE ISSUED: 10/16/09

A

SHEER MR-100
MATERIAL ID#200917
FABRIC BY PROCUREMENT
FABRICATION AND INSTALLATION
BY FABRICATOR

B

BLACK-OUT LINING MR-101
MATERIAL ID#204868
FABRIC BY PROCUREMENT
FABRICATION AND INSTALLATION
BY FABRICATOR

MEETING ROOM & PUBLIC BOARD ROOM - SHEERS WITH BLACKOUT LINING

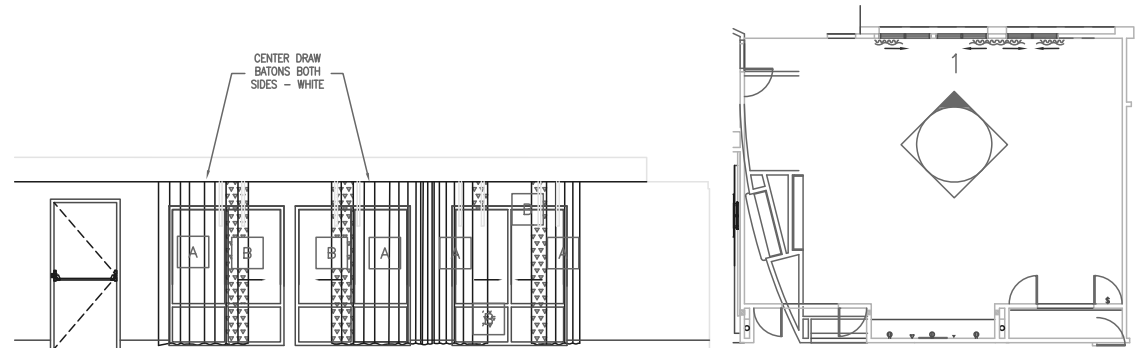
Sheer Fabrication Details

- Ripplefold @ 120% fullness
- Hanky hem with string weight
- Drapery shall run floor-to-ceiling where ever possible, and create one consistent, horizontal line.
- 3" high drapery pocket in ceiling where possible to conceal hardware and top hem (New Construction)
- Fully-operable
- Cord-operated traverse rods are not preferred
- Hardware to be mounted tight to ceiling. Wall Brackets are not acceptable.
- White batons to a 6'-0" maximum length
- Maximum height to the bottom of a baton is 5'-0" AFF
- Maximum height of manually-operated sheers is 11'-0"
- Blackout drapery hung behind sheers. No over drapery.
- Remove any valance or cornice and do not replace

Blackout Fabrication Details

- Ripplefold @ 120% fullness
- 1/2" double-fold, clean finish hem
- A plastic covered 1"x1" weight secured in the each corner.
- French seams at panel seams

Meeting Room and Public Board Room fire egress door; and associated exit signage shall not, nor have the potential to be covered by drapery. If light control is required, the use of a blackout film applied to the glass portion of a door and side light is preferred, and achieved on a property-by-property basis. The film shall coordinate with the décor of the room, and color of the adjacent door frame.



1. ALL INSTALLATIONS ARE TO OCCUR AFTER ALL PAINTING AND FINISH WORK IS COMPLETED AND AMBIENT TEMPERATURE AND HUMIDITY CONDITIONS ARE MAINTAINED TO INTENDED LEVEL.

2. INSTALLER REQUIRED TO V.I.F. (VERIFY IN FIELD) ALL REQUIRED MEASUREMENTS AND SIRE CONDITIONS AND ADJUST DRAPERY ACCORDINGLY.



MEETING ROOM ELEVATION & PLAN

SCALE: NTS



GEN 4.5 TRANSFORMATIONS MEETING ROOM DRAPERY

SCALE: NTS (NOT TO SCALE)

DATE ISSUED: 10/16/09

A

SHEER MR-100
MATERIAL ID#200917
FABRIC BY PROCUREMENT
FABRICATION AND INSTALLATION
BY FABRICATOR

CORRIDORS - SHEERS ONLY

Standard Fabrication Details

Ripplefold

Hanky hem with string weight

Cord-operated traverse rods are not preferred

3" high drapery pocket in ceiling where possible to conceal hardware and top hem (New Construction)

Hardware is Forest Group USA #CM-512 or equal, mounted tight to ceiling not wall-mounted brackets

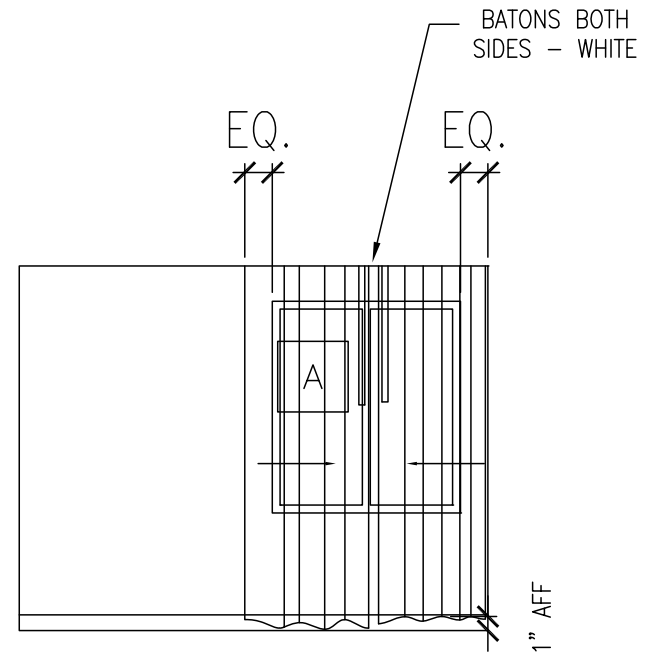
Center draw typical.

Ceiling height up to 8'-0" AFF

120% Fullness

Fully-operable

White batons to a 3'-0" maximum length



1. ALL INSTALLATIONS ARE TO OCCUR AFTER ALL PAINTING AND FINISH WORK IS COMPLETED AND AMBIENT TEMPERATURE AND HUMIDITY CONDITIONS ARE MAINTAINED TO INTENDED LEVEL.

2. INSTALLER REQUIRED TO V.I.F. (VERIFY IN FIELD) ALL REQUIRED MEASUREMENTS AND SIRE CONDITIONS AND ADJUST DRAPERY ACCORDINGLY.



CORRIDOR ELEVATION

SCALE: NTS



CORRIDOR DRAPERY

SCALE: NTS (NOT TO SCALE)

DATE ISSUED: 03/08/10

COURTYARD BY MARRIOTT

Public Space Interior Decor Package: TRANSFORMATIONS

PUBLIC SPACE WINDOW COVERING SPECIFICATIONS

Sheer Fabric (Lobby, Meeting Room and Public Board Room)

- Valley Forge Textiles
- “Citrus Sheer 2” # 616-DMM
- Marriott Material ID #200917
- 118” wide
- 100% polyester
- Fabric is directional. Railroad whenever possible, though entire Public Space must be uniform in direction

Blackout Lining (Meeting Room and Public Board Room)

- Roc-Lon
- “Denimtone” Color: Mustard BO
- Marriott Material ID #204868
- 54” wide
- 100% polyester
- Fabric is non-directional
- White side to the window

LOBBY – SHEERS ONLY

Standard Fabrication Details

- Ripplefold
- Hanky hem with string weight
- Cord-operated traverse rods are not preferred
- 3” high drapery pocket in ceiling where possible to conceal hardware and top hem (New Construction)
- Hardware is Forest Group USA #CM-512 or equal, mounted tight to ceiling. Wall-mounted brackets are not acceptable.
- Drapery shall run floor-to-ceiling wherever possible, and create one consistent, horizontal line.
- Drapery behind Media Pods, where clearances may be tight, may stop at raised sill to save space.
- Center draw typical. Smaller windows may have side draw to reduce panels and batons. Drapery shall draw and frame the view beyond, not clutter the view beyond. Wide expanses of glass may require intermediate pairs of drapery.

Ceiling height up to 11’-0” AFF

- 120% Fullness
- Fully-operable
- White batons to a 6’-0” maximum length
- Maximum height to the bottom of a baton is 5’-0” AFF
- Maximum height of manually-operated sheers is 11’-0”

Ceiling Heights of more than 11'-0" AFF (Fabric cannot be railroaded)

- Stationary side hangings
- 120% fullness
- Hardware installed only where drapery hangs. Rods do not need to be continuous across entire length of window. If continuous rods are used, mechanical stops shall be installed to limit drapery traverse.
- To frame the views beyond, side hangings shall project both into window frame to cover the edge of glass, and beyond window frame to cover a portion of the adjacent wall area. Projections each side should be proportional to the span of glass, and wall area on each side.
- Additional light control, if required, shall be achieved on a property-by-property basis using tinted window film

MEETING ROOM & PUBLIC BOARD ROOM – SHEERS WITH BLACKOUT LINING

Sheer Fabrication Details

- Ripplefold @ 120% fullness
- Hanky hem with string weight
- Drapery shall run floor-to-ceiling where ever possible, and create one consistent, horizontal line.
- 3" high drapery pocket in ceiling where possible to conceal hardware and top hem (New Construction)
- Fully-operable
- Cord-operated traverse rods are not preferred
- Hardware to be mounted tight to ceiling. Wall Brackets are not acceptable.
- White batons to a 6'-0" maximum length
- Maximum height to the bottom of a baton is 5'-0" AFF
- Maximum height of manually-operated sheers is 11'-0"
- Blackout drapery hung behind sheers. No over drapery.
- Remove any valance or cornice and do not replace

Blackout Fabrication Details

- Ripplefold @ 120% fullness
- 1/2" double-fold, clean finish hem
- A plastic covered 1"x1" weight secured in the each corner.
- French seams at panel seams

Meeting Room and Public Board Room fire egress doors and associated exit signage shall not, nor have the potential to be covered by drapery. If light control is required, the use of a blackout film applied to the glass portion of a door and side light is preferred, and achieved on a property-by-property basis. The film shall coordinate with the décor of the room, and color of the adjacent door frame.

EXERCISE ROOM (OPTIONAL)
GUEST CORRIDOR (OPTIONAL)
EMPLOYEE DINING
ADMINISTRATIVE OFFICES
STAIRWELLS
MAINTENANCE OFFICE
HOUSEKEEPING MANAGER
BACK OF HOUSE
VENDING

Roller Shade

- Hunter Douglas Hospitality
- Pattern: Haze
- Openness: 10%
- Color: Courtyard Crystal
- Fire-rated
- Standard Roll
- 3” Coordinating White Fascia
- Inside-mount
- Heat-sealed hem bar
- Continuous loop, metal beaded chain with cord tensioner

9'-0" OR
GREATER

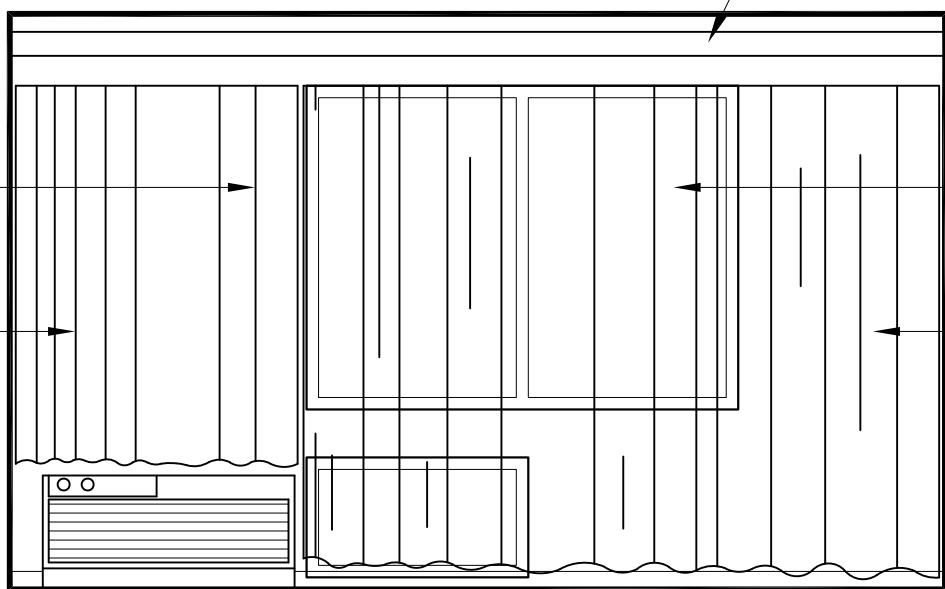


TYPICAL PARTIAL ELEVATION @ 1ST FLOOR

PAINTED WOOD CORNICE

X-101: 129714
STATIONARY
SHEER/
DRAPERY

X-102L: 6449
STATIONARY
BLACKOUT
LINER



X-101: 129714
TRAVERSING
SHEER/
DRAPERY

X-102L: 6449
TRAVERSING
BLACKOUT
LINER

TYPICAL CONDITION: CEILING MOUNTED

X-101	TRAVERSING SHEER - MOD GLISTEN (118); MARTINI - #129714 - 250% FULLNESS & HANKY HEM. STRIPE TO RUN HORIZONTALLY.
X-102L	BLACKOUT LINER - 3 PASS BLACKOUT (54); WHITE/WHITE - #6449 - 200% FULLNESS; 1/2" CLEAN FINISH HEM.



FACETS GUESTROOM DRAPERY ELEVATION

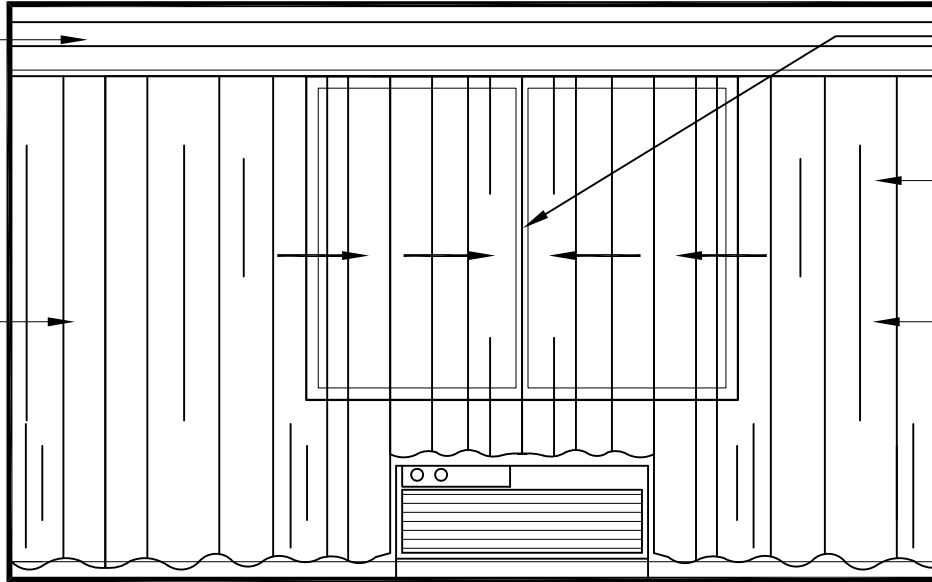
CEILING MOUNT 2 TRACK SYSTEM

SCALE: 3/8" = 1'-0"

PAINTED WOOD CORNICE

X-101: 129714
STATIONARY
SHEER/
DRAPERY

X-102L: 6449
STATIONARY
BLACKOUT
LINER



CENTER OPENING:
TRAVERSING BLACK-OUT: X-102L
TRAVERSING SHEER: X-101

X-101: 129714
TRAVERSING
SHEER/
DRAPERY

X-102L: 6449
TRAVERSING
BLACKOUT
LINER

X-101	TRAVERSING SHEER - MOD GLISTEN (118); MARTINI - #129714 - 250% FULLNESS & HANKY HEM. STRIPE TO RUN HORIZONTALLY.
X-102L	BLACKOUT LINER - 3 PASS BLACKOUT (54); WHITE/WHITE - #6449 - 200% FULLNESS; 1/2" CLEAN FINISH HEM.

COURTYARD CENTERED PTAC SITE CONDITION:

PAINTED WOOD CORNICE CEILING MOUNTED WALL TO WALL - SUPPLIED BY GC

HARDWARE - 2 TRACKS CEILING MOUNTED WALL TO WALL

2 SHORT TRAVERSING TREATMENTS OVER PTAC

1 BLACKOUT LINER - CENTER OPENING WITH BATON

1 SHEER - CENTER OPENING WITH BATON

2 LONG TRAVERSING TREATMENTS ON EITHER SIDE OF PTAC UNIT

2 BLACKOUT LINERS - ONE WAY DRAW FROM EACH WALL TO PTAC (NO BATONS)

2 SHEERS - ONE WAY DRAW FROM EACH WALL TO PTAC (NO BATONS)

EACH OF THE SHORT & LONG PANELS NEED TO BE MADE PER THE BRAND/SCHEME SPECIFICATIONS AND MADE INDEPENDENT & COMPLETE.

BLACKOUT LINER - THE OVERLAP OF THE LONG PANEL IS PLACED ON TOP OF THE RETURN EDGE OF THE SHORT (PTAC) PANEL OVERLAPPING ONLY THE 1 1/2" SIDE HEMS. THE PANELS ARE SEWN TOGETHER THE LENGTH OF THE 4" HEADER, ON BOTH SIDES OF THE HEMS. CONTINUE SEWING DOWN THE OVERLAP EDGE JOINING TOGETHER BOTH PANELS WITH ONE ROW OF STITCHING FROM THE HEADER TO THE BOTTOM HEM TO ELIMINATE LIGHT LEAKAGE.

SHEERS - THE OVERLAP OF THE LONG PANEL IS PLACED ON TOP OF THE RETURN EDGE OF THE SHORT (PTAC) PANEL. COMPLETELY OVERLAPPING THE ENTIRE 3 1/2" OVERLAP AND RETURN. SEW THE LENGTH OF THE 4" HEADER ON THE LEADING OUTSIDE EDGE AND ON THE INSIDE EDGE NEXT TO THE PLEAT ONLY. DO NOT JOIN THE 2 PANELS FROM THE LEADING EDGE TO THE BOTTOM HEM.

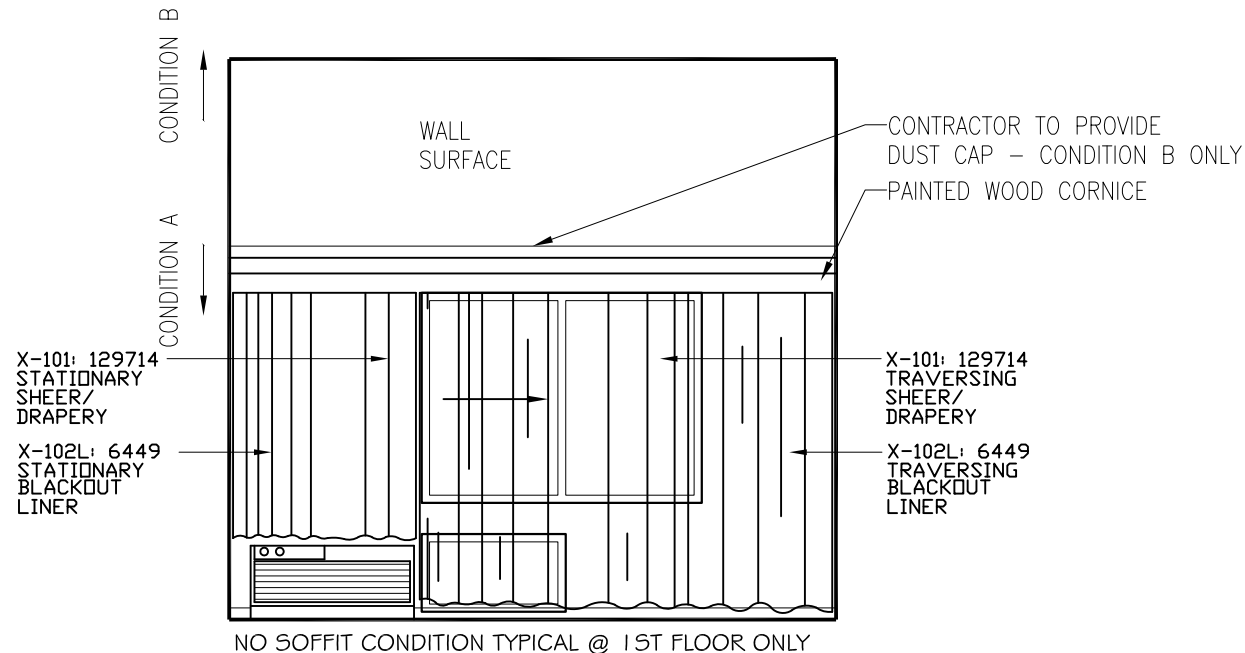
WHEN THE DRAPERY IS OPENED, IN THE STACKING POSITION, THERE WILL BE APPROXIMATELY 10" OF THE SHRT PANEL EXTENDING OUT FROM THE LONG PANEL.



FACETS GUESTROOM DRAPERY ELEVATION

CONDITION "C" CENTERED PTAC UNIT

SCALE: 3/8" = 1'-0"



A	GUESTROOM CEILING HEIGHT 9'-0" OR LESS W/D SOFFIT DRAPERIES & CORNICE CEILING MOUNTED
B	GUESTROOM CEILING HEIGHT 9'-1" OR GREATER W/D SOFFIT DRAPERIES & CORNICE (W/ DUST CAP) WALL MOUNTED @ 9'-0"
X-101	TRAVERSING SHEER - MOD GLISTEN (118); MARTINI - #129714 - 250% FULLNESS & HANKY HEM. STRIPE TO RUN HORIZONTALLY.
X-102L	BLACKOUT LINER - 3 PASS BLACKOUT (54); WHITE/WHITE - #6449 - 200% FULLNESS; 1/2" CLEAN FINISH HEM.

COURTYARD NO SOFFIT HIGH CEILINGS @ 1ST FLOOR SITE CONDITION:

PAINTED WOOD CORNICE CEILING MOUNTED WALL TO WALL W/ WOOD DUSTER - SUPPLIED BY GC
HARDWARE - 2 TRACKS CEILING MOUNTED WALL TO WALL

1 SHORT TRAVERSING TREATMENTS OVER PTAC

1 BLACKOUT LINER - ONE-WAY DRAW OPENING WITH BATON

1 SHEER - ONE-WAY DRAW OPENING WITH BATON

1 LONG TRAVERSING TREATMENTS

1 BLACKOUT LINERS - ONE WAY DRAW FROM WALL TO PTAC (NO BATONS)

1 SHEERS - ONE WAY DRAW FROM WALL TO PTAC (NO BATONS)

EACH OF THE SHORT & LONG PANELS NEED TO BE MADE PER THE BRAND/SCHEME SPECIFICATIONS AND MADE INDEPENDENT & COMPLETE.

BLACKOUT LINER & SHEERS: SHORT PANEL (OVER PTAC UNIT) TO BE STATIONARY. THE LONGER PANEL IS TO TRAVERSE FROM CENTER. TRAVERSING PANEL TO OVERLAP STATIONARY PANEL.



FACETS GUESTROOM DRAPERY ELEVATION

SITE CONDITION - NO SOFFIT

SCALE: 1/4" = 1'-0"

THE HARDWARE FOR THE GUEST ROOMS FROM FOREST GROUP USA IS:

TRACK 510-25 WHITE

MASTERS 52502-25 AND 52504-25

END CAPS 52301-25

BALL BEARING CARRIERS 52000-25

BATONS 3' WHITE FIBERGLASS FOR A STD RM 8' CEILING

BATONS 4' WHITE FIBERGLASS FOR A STD ADA 8' CEILING

THE HARDWARE FOR THE GUEST ROOMS FROM KIRSCH IS:

TRACK 94004-25 WHITE

MASTERS 94133-25 AND 94134-25

END CAPS 94142-25

BALL BEARING CARRIERS 9670-25

BATONS 3' WHITE FIBERGLASS FOR A STD RM 8' CEILING

BATONS 4' WHITE FIBERGLASS FOR A STD ADA 8' CEILING



FACETS GUESTROOM DRAPERY HARDWARE